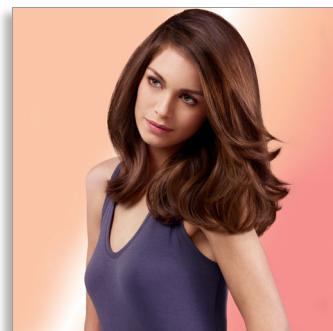




Philips ThermoProtect
Ionic
Hairdryer

2200W

asymmetric volume diffuser



HP8244/09

Fast dry at a lower temperature with ThermoProtect

with volume diffuser & 14mm styling nozzle.

Protect your hair while enjoying fast drying results. Multiple heat and speed settings give the blow dry you want. Features ThermoProtect for fast drying at a constant caring temperature and Ionic Care for frizz-free shine.

Beautifully styled hair

- Professional 2200W
- Six flexible speed and temperature settings for full control
- Cool Shot sets your style
- Perfect styling results with a slim styling nozzle
- Adds volume, maximising thickness, curls and bouncy styles

Less Hair Damage

- ThermoProtect temperature setting
- Ionic conditioning for shiny, frizz-free hair

Easy to use

- 1.8 m power cord
- Removeable air flow filter makes cleaning quick and easy
- Easy storage hook for convenient storage

PHILIPS

Highlights

2200W



This 2200W professional hairdryer creates a powerful airflow. The resulting combination of power and speed makes drying and styling your hair quicker and easier.

ThermoProtect temperature



The ThermoProtect temperature provides the optimal drying temperature and gives additional protection from overheating the hair. With the same powerful airflow, you will get the best results in a caring way.

Speed and temperature settings



The speed and heat required can be easily adjusted to create the perfect style. Six different settings ensure full control for precise and tailored styling.

Cool Shot



A must-have professional function, the Cool Shot button provides an intense burst of cold air. It is used after styling to finish and set the style.

Ionic Care



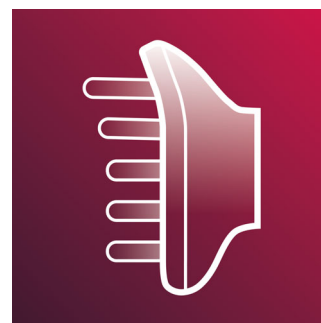
Give your hair an instant care with ionic conditioning. Charged negative ions eliminate static, condition the hair and smooth down the hair cuticles to intensify the hair's shine and glossiness. The result is smooth and frizz-free hair that shines beautifully.

Slim styling nozzle



Perfect styling results and a shiny, polished look with a slim styling nozzle for precise styling.

Asymmetric volume diffuser



The volume diffuser has a unique asymmetric design that is contoured to the head, making it easier and more intuitive to use. The diffuser also spreads the flow of air across the hair, drying hair more healthy, boosting volume and reducing frizz. For best results, hold close to the crown and root area and let the diffuser's fine textured pins encourage volume, add bounce and shape curls.

1.8 m cord



Convenient to use thanks to the 1.8m power cord length.

Removeable air inlet filter

The removeable air flow filter of your hairdryer is easy to maintain. Simply click off to clean. Doing this regularly will prevent build up of dust and hair that can affect drying performance.

Specifications

Technical specifications

- Voltage: 220 V
- Frequency: 50-60 Hz
- Wattage: 2200 W
- Power: 2200 W
- Color/finishing: Black & Gold
- Motor: DC Motor
- Cord length: 1.8 m

Features

- Foldable handle: No
- Cool shot

- Dual voltage: No
- Travel pouch: No
- Ceramic coating: No
- Ion conditioning
- Hanging loop
- Diffuser: Asymmetric volume diffuser
- Nozzle / Concentrator: Slim styling 14mm nozzle
- Number of attachments: 2

Service

- 2-year guarantee



Issue date 2016-02-19

Version: 1.1.1

© 2016 Koninklijke Philips N.V.
All Rights reserved.

Specifications are subject to change without notice.
Trademarks are the property of Koninklijke Philips N.V.
or their respective owners.

www.philips.com