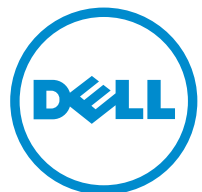


Inspiron 24 3000

Setup and Specifications

Computer Model: Inspiron 24-3464
Regulatory Model: W12C
Regulatory Type: W12C006



Notes, cautions, and warnings



NOTE: A NOTE indicates important information that helps you make better use of your product.



CAUTION: A CAUTION indicates either potential damage to hardware or loss of data and tells you how to avoid the problem.



WARNING: A WARNING indicates a potential for property damage, personal injury, or death.

© 2016 Dell Inc. All rights reserved. This product is protected by U.S. and international copyright and intellectual property laws. Dell and the Dell logo are trademarks of Dell Inc. in the United States and/or other jurisdictions. All other marks and names mentioned herein may be trademarks of their respective companies.

2016 - 09

Rev. A00

Contents

Set up your computer.....	4
Views.....	10
Front.....	10
Left.....	11
Right.....	12
Back.....	13
Tilt.....	14
Easel stand.....	14
Pedestal stand.....	15
Specifications.....	16
Dimensions and weight.....	16
System information.....	16
Memory.....	17
Ports and connectors.....	17
Communications.....	17
Video.....	18
Audio.....	18
Storage.....	18
Media-card reader.....	18
Display.....	19
Camera.....	19
Stand.....	19
Power adapter.....	20
Computer environment.....	20
Getting help and contacting Dell.....	21
Self-help resources.....	21
Contacting Dell.....	22

Set up your computer



CAUTION: Place the computer on a soft and clean surface to avoid scratching the display.

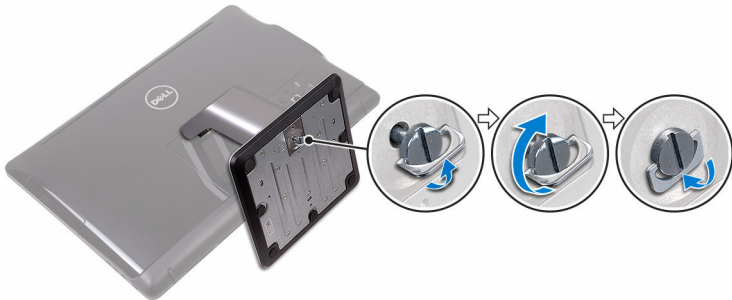
1 Set up the stand.

Pedestal stand

a) Lift the stand riser and attach the base.



b) Tighten the captive screw to secure the base to the stand riser.



Easel stand

Lift the stand.

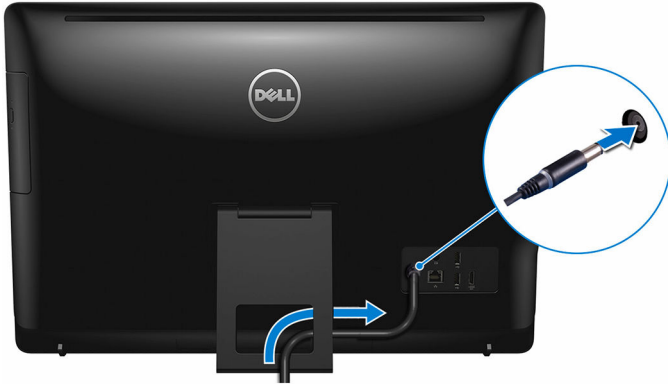


2 Set up the keyboard and mouse.

See the documentation that shipped with the keyboard and mouse.

- 3 Route the power cable through the routing guide on the stand and connect the power adapter.

Easel stand



Pedestal stand



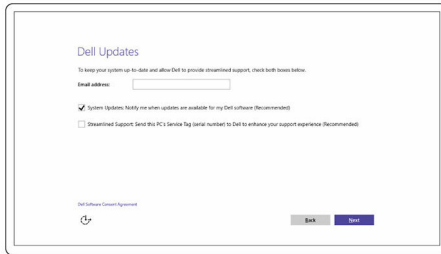
- 4 Press the power button.



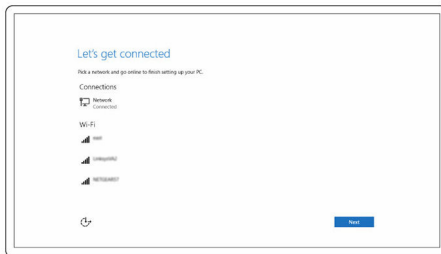
5 Finish operating system setup.

For Windows:

- a) Enable Dell updates.

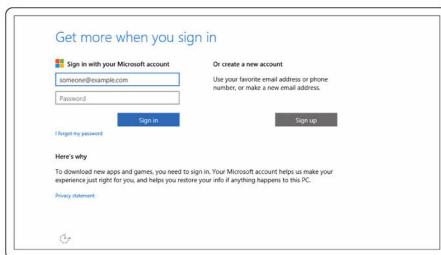


- b) Connect to your network.



NOTE: If you are connecting to a secured wireless network, enter the password for the wireless network access when prompted.

- c) Sign-in to your Microsoft account or create a local account.



For Ubuntu:

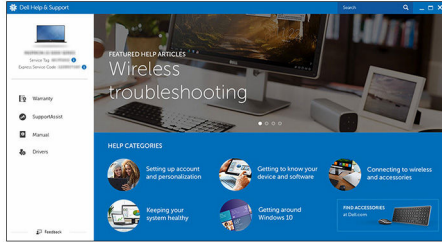
Follow the instructions on the screen to finish setup.

6 Locate Dell apps in Windows.



Register your computer

Dell Help & Support



SupportAssist — Check and update your computer

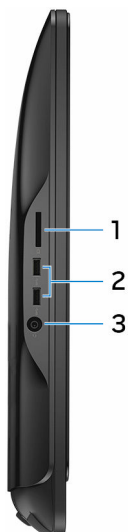
Views

Front



- 1 Camera**
Enables you to video chat, capture photos, and record videos.
- 2 Camera-status light**
Turns on when the camera is in use.
- 3 Microphone (for non-touch screen model)**
Provides digital sound input for audio recording, voice calls, and so on.
- 4 Microphone (for touch screen model)**
Provides digital sound input for audio recording, voice calls, and so on.

Left



1 **Media-card reader**

Reads from and writes to media cards.

2 **USB 3.0 ports (2)**

Connect peripherals such as storage devices and printers. Provides data transfer speeds up to 5 Gbps.

3 **Headset port**

Connect a headphone or a headset (headphone and microphone combo).

Right



1 **Optical drive (optional)**

Reads from and writes to CDs and DVDs.

2 **Display-brightness control buttons (2)**

Press to increase or decrease the display brightness.

3 **Input-source selection button**

Press to select the video-input source.

4 **Power button**

Turns on your computer or changes the power state of your computer.

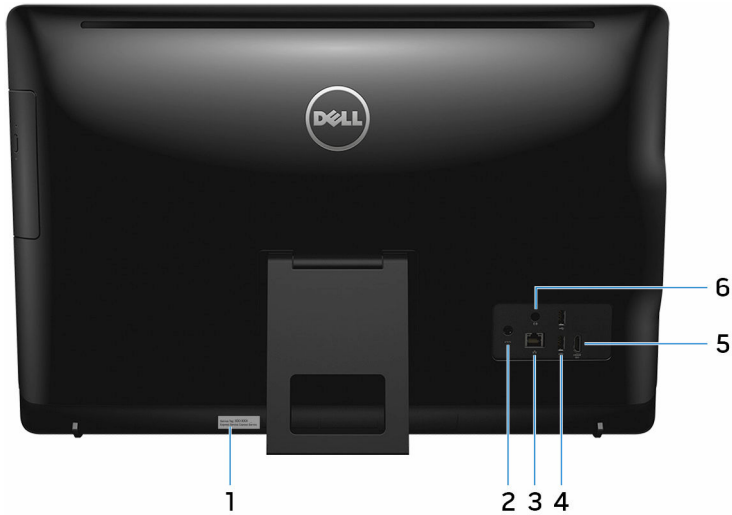
Press to put the computer in sleep state if it is turned on.

Press and hold for 4 seconds to force shut-down the computer.



NOTE: You can customize the power-button behavior in Power Options. For more information, see *Me and My Dell* at www.dell.com/support/manuals.

Back



1 Service Tag label

The Service Tag is a unique alphanumeric identifier that enables Dell service technicians to identify the hardware components in your computer and access warranty information.

2 Power-adaptor port

Connect a power adaptor to provide power to your computer.

3 Network port (with lights)

Connect an Ethernet (RJ45) cable from a router or a broadband modem for network or internet access.

The two lights next to the connector indicate the connectivity status and network activity.

4 USB 2.0 ports (2)

Connect peripherals such as storage devices and printers. Provides data transfer speeds up to 480 Mbps.

5 HDMI-in port

Connect a gaming console, Blu-ray player, or other HDMI-out enabled devices.

6 Audio-out port

Connect audio-output devices such as speakers, amplifiers, and so on.

Tilt

Easel stand



Pedestal stand



Specifications

Dimensions and weight

Height	<ul style="list-style-type: none">Easel stand – 385.33 mm (15.17 in)Pedestal stand – 440.33 mm (17.34 in)		
Width	576.62 mm (22.70 in)		
Depth	With easel stand	With pedestal stand	Without stand
Touch screen	60.70 mm (2.39 in)	205.00 mm (8.07 in)	38.20 mm (1.50 in)
Non-touch screen	61.80 mm (2.43 in)	205.00 mm (8.07 in)	39.30 mm (1.55 in)
Weight (maximum)			
Touch screen	8.36 kg (18.43 lb)		
Non-touch screen	6.38 kg (14.07 lb)		



NOTE: The weight of your laptop varies depending on the configuration ordered and the manufacturing variability.

System information

Computer model	Inspiron 24-3464
Processor	<ul style="list-style-type: none">7th Generation Intel Core i3-7100U7th Generation Intel Core i5-7200UIntel Pentium Processor
Chipset	Integrated in processor

Memory

Slots	Two SODIMM slots
Type	DDR4
Speed	Up to 2133 MHz
Configurations supported	2 GB, 4 GB, 6 GB, 8 GB, and 16 GB

Ports and connectors

External:

Network	One RJ45 port
USB	<ul style="list-style-type: none">• Two USB 2.0 ports• Two USB 3.0 ports
Audio/Video	<ul style="list-style-type: none">• One HDMI-in port• One audio line-out port• One headset port

Internal:

M.2 card	One M.2 slot for WLAN and Bluetooth
----------	-------------------------------------

Communications

Ethernet	10/100 Mbps Ethernet controller integrated on system board
Wireless	<ul style="list-style-type: none">• Wi-Fi 802.11ac• Wi-Fi 802.11b/g/n• Bluetooth 4.0

Video

	Integrated	Discrete
Controller	Integrated in processor	NVIDIA GeForce 920MX
Memory	Shared system memory	2 GB GDDR5

Audio

Controller	Realtek ALC3661 Waves MaxxAudio Pro
Speakers	Two
Speaker Output	<ul style="list-style-type: none">• Average – 3 W• Peak – 3.5 W
Microphone	Single digital microphone
Volume controls	Program menus

Storage

Interface	<ul style="list-style-type: none">• SATA 3 Gbps for optical drive• SATA 6 Gbps for hard drive
Hard drive	One 2.5-inch drive
Optical drive	One 9.5-mm DVD+/-RW drive (optional)

Media-card reader

Type	One 4-in-1 slot
Cards supported	<ul style="list-style-type: none">• SD card• MultiMediaCard (MMC)• SD Extended Capacity (SDXC) card• SD High Capacity (SDHC) card

Display

Type	<ul style="list-style-type: none">• 23.8-in FHD touchscreen• 23.8-in FHD non-touchscreen
Resolution (maximum)	1920 x 1080
Pixel pitch	0.2745 mm x 0.2745 mm
Height	317.40 mm (12.50 in)
Width	543 mm (21.38 in)
Diagonal	604.52 mm (23.80 in)
Refresh rate	60 Hz
Controls	Brightness can be controlled through the display-brightness increase/decrease buttons

Camera

Resolution	<ul style="list-style-type: none">• Still image: 0.92 megapixels• Video: 1280 x 720 at 30 fps (maximum)
Diagonal viewing angle	74 degrees

Stand

	Easel	Pedestal
Height	174.80 mm (6.88 in)	227.70 mm (8.96 in)
Width	120 mm (4.72 in)	205.60 mm (8.09 in)
Depth	22.50 mm (0.89 in)	225.42 mm (8.87 in)
Operating angle	12.5° to 45°	-5° to 30°

Power adapter

Type	65 W	90 W
Input voltage		100 VAC to 240 VAC
Input frequency		50 Hz to 60 Hz
Input current (maximum)	1.70 A	2.50 A
Output current (continuous)	3.34 A	4.62 A
Rated output voltage		19.50 VDC
Temperature range: Operating		0°C to 40°C (32°F to 104°F)
Temperature range: Storage		-40°C to 70°C (-40°F to 158°F)

Computer environment

Airborne contaminant level: G1 as defined by ISA-S71.04-1985

	Operating	Storage
Temperature range	0°C to 35°C (32°F to 95°F)	-40°C to 65°C (-40°F to 149°F)
Relative humidity (maximum)	10% to 90% (non-condensing)	0% to 95% (non-condensing)
Vibration (maximum)*	0.66 GRMS	1.30 GRMS
Shock (maximum)	110 G [†]	160 G [‡]
Altitude (maximum)	-15.2 m to 3048 m (-50 ft to 10,000 ft)	-15.2 m to 10,668 m (-50 ft to 35,000 ft)

* Measured using a random vibration spectrum that simulates user environment.

† Measured using a 2 ms half-sine pulse when the hard drive is in use.

‡ Measured using a 2 ms half-sine pulse when the hard-drive head is in parked position.

Getting help and contacting Dell

Self-help resources

You can get information and help on Dell products and services using these self-help resources:

Information about Dell products and services www.dell.com

Windows 8.1 and Windows 10

Dell Help & Support app



Windows 10

Get started app



Windows 8.1

Help + Tips app



Accessing help in Windows 8, Windows 8.1, and Windows 10

In Windows search, type **Help and Support**, and press Enter.

Accessing help in Windows 7

Click **Start** → **Help and Support**.

Online help for operating system

www.dell.com/support/windows

www.dell.com/support/linux

Troubleshooting information, user manuals, setup instructions, product specifications, technical help blogs, drivers, software updates, and so on.

www.dell.com/support

Learn about your operating system, setting up and using your computer, data backup, diagnostics, and so on.

See *Me and My Dell* at

www.dell.com/support/manuals.

Contacting Dell

To contact Dell for sales, technical support, or customer service issues, see www.dell.com/contactdell.



NOTE: Availability varies by country and product, and some services may not be available in your country.



NOTE: If you do not have an active internet connection, you can find contact information on your purchase invoice, packing slip, bill, or Dell product catalog.