

WorkForce DS-780N

# Secure scanning Complete control



# Secure network scanning

The secure and intelligent DS-780N is a compact network scanner that speeds up workflows by enabling users to rapidly scan and share documents over a network.

The high capacity 100-sheet ADF and fast scanning speed of 45ppm/90ipm in colour at 300dpi enable instant sharing and storing of scanned files. The DS-780N helps you to gain control over critical information, improve your workflows and increase operational and process efficiency.

## Secure document processing and efficient data management

Offering true network capability at multiple location points, the DS-780N is designed specifically for busy workgroups who need to scan and share documents effectively.

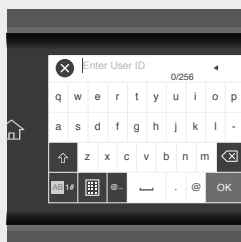
Utilising the Authentication Edition module for Document Capture Pro Server<sup>1</sup>, IT administrators can manage a variety of tasks centrally from scan job profiles to user access rights. Those tasks can then be made accessible through the device's touch screen panel ensuring the right jobs are made available to the right users.

IT administrators have the ability to control access rights to jobs in a number of ways including User ID and password, LDAP Active Directory, ID Card log in, and pin code. Additionally administrators can remotely lock screens to prevent unauthorised profile amendments. Ensuring each users job specific profiles are made available wherever they are within the business.

## 3 types of login



Pin code



User ID & password



ID card



## Flexible and versatile media handling

Featuring best-in-class paper feed technology, with slow mode (an industry first<sup>2</sup>), as well as an innovative double feed detection skip function, scanning challenging media has never been easier. Scan thin media (27gsm minimum), thick card (413gsm maximum), long documents up to 6096mm long or even A3 using the auto-detectable carrier sheet.

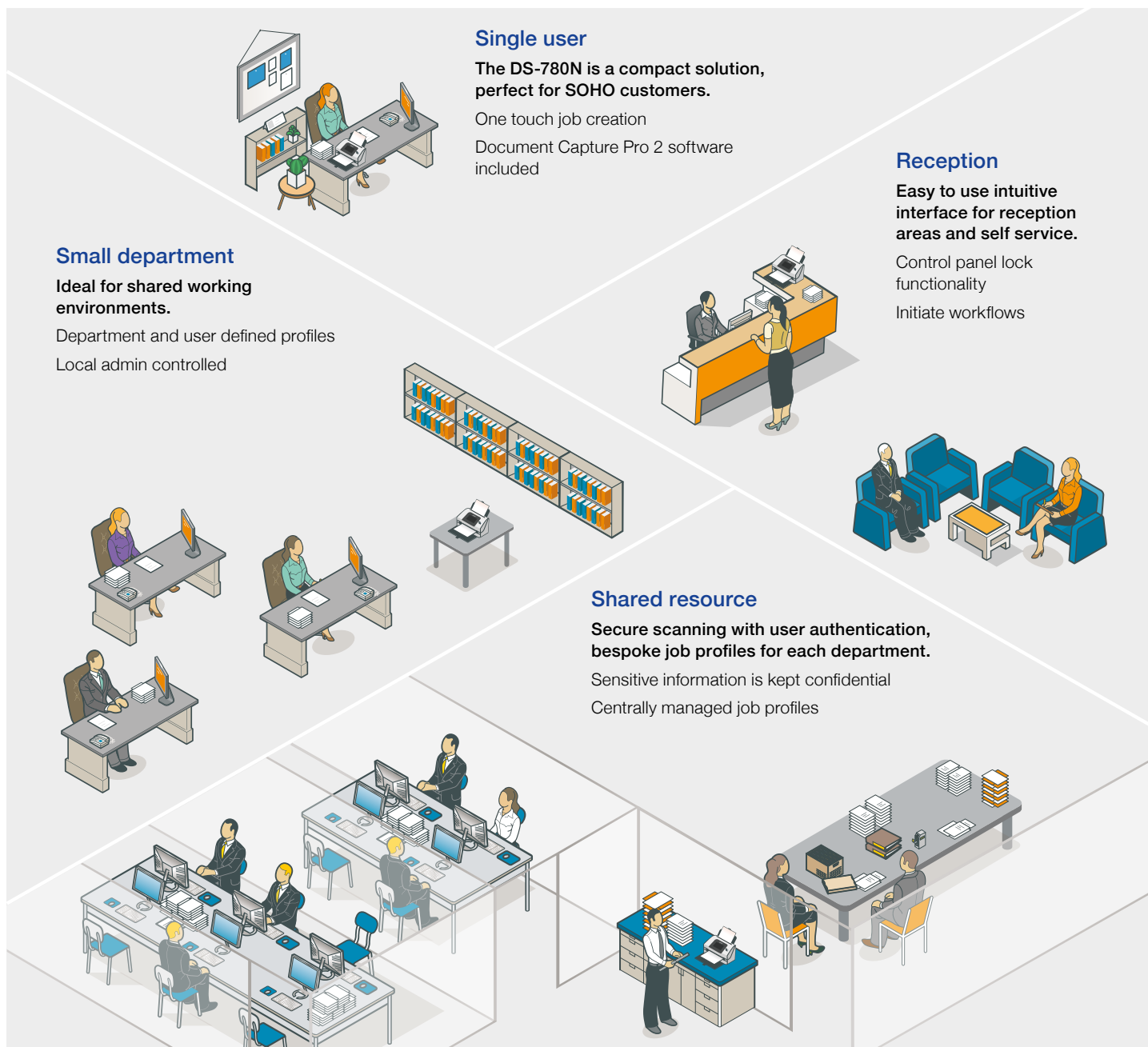
The robust DS-780N scanner features high-performance, dual-core CPUs with hardware acceleration that ensures high-quality image capture.

Epson's comprehensive scanning suite of software includes image enhancement features like auto size, crop and rotation, auto skew correction and text enhancement.

Captured files can be scanned, saved and shared instantly. Automatic naming, separation and routing can all be completed to optimise efficiency. In addition TWAIN, WIA, and ISIS drivers are available allowing seamless connectivity with your existing document management systems and cloud repositories.



# Capture the true value of business documents



## Single user

The DS-780N is a compact solution, perfect for SOHO customers.

One touch job creation

Document Capture Pro 2 software included

## Reception

Easy to use intuitive interface for reception areas and self service.

Control panel lock functionality

Initiate workflows

## Small department

Ideal for shared working environments.

Department and user defined profiles

Local admin controlled

## Shared resource

Secure scanning with user authentication, bespoke job profiles for each department.

Sensitive information is kept confidential

Centrally managed job profiles

1. Requires download from Epson website.

2. Compared to sheet-fed scanners, within the speed range of 25ppm to 45ppm, based on data from the websites and brochures of the top five best-selling scanner models in EMEA for the full year 2016 according to InfoSource Document Management Scanner Sales Full Year 2016.

For further information please contact your local Epson office or visit [www.epson.co.za](http://www.epson.co.za)

**Algeria** (+2213) 770 938 617 **Austria** 01 253 49 78 333 **Belgium** +32 (0)2 792 04 47 **Czech** 800/142 052 **Denmark** 44 50 85 85  
**East Africa** (+254) 734 354 075 **Finland** 0201 552 091 **France** 09 74 75 04 04 (Cost of local call, operator charges may apply)  
**Germany** +49 (0) 2159/92 79 500 **Greece** 210-8099499 **Hungary** 06800 147 83 **Ireland** 01 436 7742 **Israel** (+972)-3-5751833  
**Italy** 02-660321 10 (0,12 €/min) **Luxembourg** +352 27860692 **Middle East** +9714 8872172 **Morocco** (+212) 661 31 11 18  
**Netherlands** +31 (0)20 708 5099 **Norway** +47 67 11 37 00 **Poland** 0-0-800 4911299 (0,16 zł/min) **Portugal** 707 222 111  
**Russia** (095) 777-03-55 **Slovakia** 0850 111 429 **Southern Africa** (+2711) 465-9621 **Spain** 93 582 15 00 **Sweden** 0771-400135  
(Mobilsamtal – 0,99 kr/min, Lokala samtal – 0,30 kr/min, Utlandssamtal – 0,89 kr/min) **Switzerland** 022 592 7923  
**Tunisia** (+216) 9833 3571 **Turkey** (0212) 3360303 **United Kingdom** 0871 222 6702 **West Africa** (+234)8020727843

Trademarks and registered trademarks are the property of Seiko Epson Corporation or their respective owners.  
Product information is subject to change without prior notice.

**EPSON®**