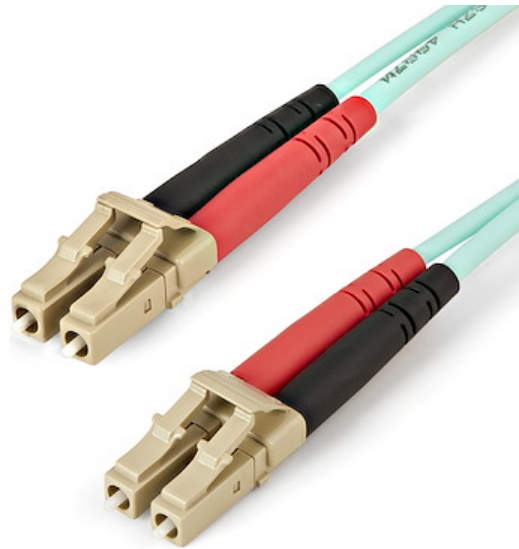


2m (6ft) LC/UPC to LC/UPC OM4 Multimode Fiber Optic Cable, 50/125µm LOMMF/VCSEL Zipcord Fiber, 100G, Low Insertion Loss - LSZH Fiber Jumper Cord

Product ID: 450FBLCLC2



The LC to LC Multimode Duplex Fiber Optic Patch cable facilitates reliable connectivity across 40 and 100 Gigabit networks.

With laser-optimized multimode fiber (LOMMF), the OM4 fiber patch cable is ideal for 850 nm and 1350 nm Vertical Cavity Surface Emitting Laser (VCSEL) and LED sources. Precision-manufactured ceramic ferrules ensure correct fiber alignment to prevent connectivity issues and minimize insertion loss. Designed for reliability in high-density network applications, the LC to LC UPC polished fiber ends greatly improves return loss characteristics over older PC polishing techniques which may negatively affect performance.

This multimode 50/125µm fiber optic patch cord is backward compatible with OM3 and 1/10/40 Gbps networks, ensuring a reliable connection with legacy fiber environments.

Housed in a LSZH (Low-Smoke, Zero-Halogen) flame-retardant jacket, this OM4 fiber cable emits low smoke and toxic fumes when exposed to high heat or in the event of a fire. It enables safer cable installations in areas with poor ventilation including some industrial settings, self-contained environments such as trains and aircraft, as well as residential settings where building codes are a consideration.

Each OM4 fiber cable is also individually tested and certified to be within acceptable optical insertion loss limits for guaranteed compatibility and 100% reliability.

Certifications, Reports and Compatibility



Applications

- Use in 40/100 Gigabit Ethernet and Fiber Channel applications
- Supports VCSEL laser and LED light sources

Features

- **OM4 FIBER CABLE:** OM4 Laser-Optimized Multimode Fiber Cable is immune to EMI and supports up to 100 Gbps Ethernet; Full-duplex zip-cord with color-coded TX/RX connectors enable quick visual identification of polarity and conversion to simplex cabling
- **QUALITY CONSTRUCTION:** LC/LC connectors with UPC polished ends significantly improves return loss over PC polish; Robust molded connector strain reliefs minimizes wear from bending; Protective Aramid fiber for increased tensile strength
- **SAFETY AND RELIABILITY:** Individually tested for signal integrity; LSZH jacket emits low-smoke and toxic fumes if combusted; Attenuation value under 2.3dB/km meets or exceeds industry standards
- **WIDE COMPATIBILITY:** OM4 LC/LC multimode cable supports 1/10/40/100 Gbps networks; Backward compatible with OM3; For high-density network applications such as SANs, data servers, fiber switches, SFP+, QSFP+, and QSFP28 transceivers
- **SPECS:** 2m (6.6ft) Color: Aqua (OM4); LC/LC UPC; 50/125m Core/Cladding; 850nm or 1300nm LED/VCSEL; Modal Bandwidth: 2000MHz-km at 850nm; Cable OD: 2.9mm; Bend Radius: Static 1.2in (3cm), Dynamic 2.4in (6cm); Backed for Life

Hardware

Warranty	Lifetime
Fiber Size	50/125
Cable Jacket Material	Low Smoke Zero Halogen
Fire Rating	LSZH Rated (Low Smoke Zero Halogen)
Fiber Classification	OM4

Performance

Maximum Data Transfer Rate	100Gbps
Cable Rating	1Gbps / 10Gbps / 40Gbps / 100Gbps
Type	Multi Mode
Wavelength	850nm

Connector(s)

Connector A	1 - Fiber Optic LC Duplex
Connector B	1 - Fiber Optic LC Duplex

Environmental

Operating Temperature	-20C to 60C (-4F to 140F)
Storage Temperature	-20C to 60C (-4F to 140F)
Humidity	0~90% RH

Physical Characteristics

Color	Aqua
Cable Length	6.6 ft [2 m]
Product Length	6.6 ft [2.0 m]
Product Width	0.6 in [1.5 cm]
Product Height	0.4 in [1.1 cm]
Weight of Product	1.2 oz [34.0 g]

Packaging Information

Package Quantity	1
Package Length	8.7 in [22.0 cm]
Package Width	7.9 in [20.0 cm]
Package Height	0.2 in [5.8 mm]
Shipping (Package) Weight	1.5 oz [42.0 g]

What's in the Box

Included in Package	1 - LC fiber-optic cable
---------------------	--------------------------

Warranty Information

Warranty	Lifetime
----------	----------

**Product appearance and specifications are subject to change without notice.*