

PHILIPS

Buratto single
spotlight ext.

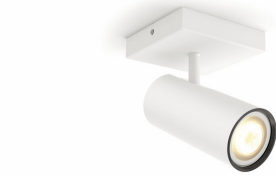
Hue White Ambiance

Extension spotlight

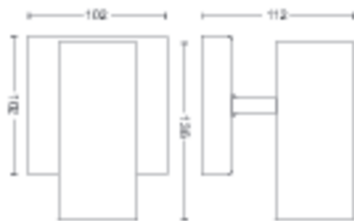
GU10

White

Smart control with Hue Bridge*



50461/31/P8



Light for your moments

Extend your Philips Hue system with additional white ambiance spots and enjoy warm to cool white light. The Hue bridge is a smart control that comes with the starter kit. Connect the spot to the bridge and control it however you like.

Light for your moments

- Relax, read, concentrate and energise with light recipes
- Installation-free dimming
- Control it your way
- Create your ambience with warm white to cool daylight
- Smart control, home and away
- Set timers for your convenience
- Requires a bridge or switch
- Wake up and go to sleep naturally

High-quality light and design

- High light output

Highlights

Light for your daily routines



Light influences our mood and behaviour. Philips Hue can help you to customise your daily routines into moments that you can enjoy. Skip your morning coffee and get ready for the day with cool, bright-white daylight that helps to energise your body and mind. Stay focused with finely tuned bright-white light. Or put your feet up and relax with a soft glow of white light for the perfect end to the day.

Installation-free dimming



Experience guaranteed smooth dimming with Philips Hue. Not too bright. Not too dark. Just right. No need for wires, an electrician or installation

Control it your way



Connect your Philips Hue lights with the bridge and start discovering the endless possibilities. Control your lights from your smartphone or tablet via the Philips Hue app, or add switches to your system to activate your lights. Set timers, notifications, alarms and more for the full Philips Hue experience. Philips Hue even works with Amazon Alexa, Apple Homekit and Google Home to allow you to control your lights with your voice.

Create your ambience



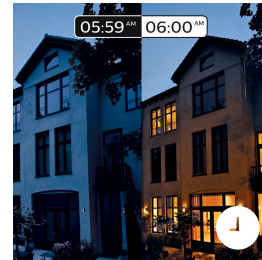
Set the right ambience for any moment and decorate your home with warm to cool white light. Enjoy different styles throughout the year, whether it's the crisp white light reminding you of a spring breeze, the warm white light of a summer sun or the ice-cool daylight of winter. Connection with the Philips Hue bridge is required for this functionality.

Smart control, home and away



With the Philips Hue iOS and Android apps you can control your lights remotely, from wherever you are. Check if you have forgotten to switch your lights off before you left home, and switch them on if you are working late. Connection with the Philips Hue bridge is required for this functionality.

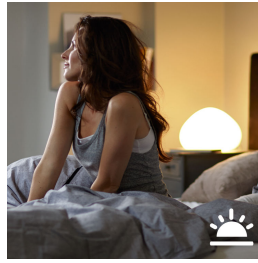
Timers for your convenience



Philips Hue can make it seem like you're at home when you're not, using the schedule function in the Philips Hue app. Set the lights to come on at a pre-set time, so the lights are on when you arrive home. You can even set rooms to light up at different times. And of course, you can let the lights turn off gradually during the night, so you never have to worry whether you've left any lights on. Connection with the Philips Hue bridge is required for this functionality.

Requires a bridge or switch

Connect your Philips Hue lights with the bridge to control your lights from your smartphone or tablet via the Philips Hue app. Or control your Philips Hue lights with the Philips Hue dimmer switch for on/off and dimming functionalities or to cycle through the light recipes.

Wake up and go to sleep

Philips Hue will help to get you out of bed the way you like it, helping you start your day feeling refreshed. The light's brightness increases gradually, mimicking the effect of sunrise and helps you wake up naturally, instead of being woken up by the loud sound of an alarm clock. Start your day the right way. In the evening, the relaxing warm

white light helps you to unwind, relax and prepare your body for a good night's sleep. Connection with the Philips Hue bridge is required for this functionality.

High light output

High-quality light with strong light output, providing plenty of white light for any moment or task.

Specifications

Design and finishing

- Colour: white
- Material: metal

Extra feature/accessory incl.

- Adjustable spot head: Yes
- click!FIX mounting: Yes
- Dimmable with the Hue app and switches: Yes
- LED lamp(s) included: Yes

Miscellaneous

- Especially designed for: Living Room and Bedroom
- Style: Modern
- Type: Spot light
- EyeComfort: No

Product dimensions and weight

- Height: 11.2 cm
- Length: 13.6 cm
- Net weight: 0.655 kg
- Width: 10.2 cm

Service

- Warranty: 2 year(s)

Technical specifications

- Lifetime up to: 15,000 h
- Total lumen output fixture (hidden): 350 lm
- Lumen output bulb included: 350 lm
- Light source equivalent to traditional bulb of: 50 W
- Total lumen output fixture: 250 lm
- Bulb technology: LED, 230 V
- Light colour: 2200-6500 Hue White Ambiance
- Mains power: 50-60 Hz
- Fixture dimmable: Yes
- LED: Yes
- Built-in LED: No
- Number of bulbs: 1
- Fitting/cap: GU10
- Wattage bulb included: 5 W
- Maximum wattage replacement bulb: 5.5 W
- IP code: IP20
- Class of protection: I – earthed
- Light source replaceable: Yes
- Replaceability of light source: Replaceable LED light source by end-user

Packaging dimensions and weight

- EAN/UPC – product: 8718696164044
- Net weight: 0.655 kg
- Gross weight: 0.836 kg
- Height: 140.000 mm
- Length: 118.000 mm
- Width: 199.000 mm
- Material number (12NC): 915005515301



Issue date: 2021-10-04
Version: 0.752

© 2021 Signify Holding. All rights reserved. Signify does not give any representation or warranty as to the accuracy or completeness of the information included herein and shall not be liable for any action in reliance thereon. The information presented in this document is not intended as any commercial offer and does not form part of any quotation or contract, unless otherwise agreed by Signify. Philips and the Philips Shield Emblem are registered trademarks of Koninklijke Philips N.V.

www.lighting.philips.com