

A graphic showing a person's hand holding a glowing blue sphere with a network of lines inside. The text 'ASGUARD ACCESS CONTROL' is overlaid in large, bold, white letters with a blue outline. The background is a dark, futuristic setting with blue and red light effects.

# ASGUARD ACCESS CONTROL

- Access Control
- Alarm Intrusion
- Time and Attendance



**ACCESS CONTROL**  
*for your safety*

## Access Control & Alarm Panel

### Asguard CP



- Access control and intruder alarm panel
- Grade 4 according to EN 50131
- Master panel controlling up to 32 doors
- Expandable up to 144 intruder alarm zones
- Up to 16 alarm keypads
- 32,768 cardholders
- 71,500 access control events memory
- 3,000 intruder alarm events memory
- Metal case with tamper protection
- 3 year Warranty

### Description

Asguard CP is a 3-in-1 product, which integrates access control, intruder alarm detection together with time and attendance making Asguard an ideal solution to monitor and protect sites, from small offices to large facilities including industrial and critical infrastructure sites.

### Features

Asguard CP is scalable according to the user's needs, with slave and plug-in modules, and multiple panels connected over IP to our software application. The access control and intruder alarm manager application allows easy programming of all the system functions.

### Key Functions

Asguard CP is ideal for pedestrian and vehicle access control, time and attendance, visitors' access control, intruder detection and alarm, and remote alarm transmission.

### Grade 4

Asguard CP fulfils the requirements, used in Grade 4 security systems according to EN 50131.

### Interoperability

Asguard CP connects to standard access control readers on Wiegand and Clock-and-Data interfaces, including proximity and biometric readers. Intrusion zones accept any dry-contact output detector, providing line supervision.

### Connectivity

Asguard CP can connect to any IP network using the Ethernet plug-in module listed in the accessories list. Slave door control units and intruder alarm zones extensions modules connect to the Asguard CP on RS485 serial ports.

### Ease of Installation

Asguard CP is supplied with all the accessories needed for easy installation.

# Technical Specification    Asguard CP Central Panel

## General System Capacity

Readers	32 (of which 2 on CP)
Cardholders	32,768
Time zones	64
Master time zones	64
Access zones	64
Master access zones	64
Holidays	4 tables of 32 holidays each
Access events memory	71,500
Intruder alarm zones	144
Partitions	32
Intruder alarm events memory	3,000
PIN code format	4 to 8 digits
Intrusion alarm users	128 (admin, service, installer, 8 x guards, 117 x users)

## Extension Ports

Access control bus ports	2 x RS485
Intruder alarm bus ports	2 x RS485
Baud rate	19,200
Access control extension capacity	up to 30 additional readers per CP (15 2-door modules or any combination of 2-door and 4-door modules)
Intruder alarm extension capacity	up to 128 additional zones (up to 8 Intruder Alarm Modules) up to 16 keypads

## Computer/server interface

Serial	1 x RS232 or RS485
Baud rate	19,200
IP	Using optional Ethernet plug-in module

## Part Numbers

Asguard CP	0065-01001
Asguard CP main board only	0065-01010
Asguard power supply board only	0065-01013
Spare EOL resistors	0065-01014
Spare plastic spacers	0065-01015

## Main Panel I/O

Readers interface	2 Wiegand interfaces
Access control inputs	2 door status monitoring inputs 2 request to exit (RQE) inputs
Intruder alarm zone inputs	16 double end of line supervised inputs
Other inputs	Battery status input Mains power monitoring input
Lock control outputs	2 dry contact lock outputs, 3A rated
General purpose outputs	4 dry contact outputs, 3A rated
Access signalling outputs	4 open collector outputs
Software resettable voltage output	1 x 12Vdc, 0.5A rated

## Power

Power input	12Vdc
Power consumption	110 mA in stand by 300 mA in alarm

## Power supply module

Mains voltage	230Vac
Output voltage	14.5 Vdc
Available output current	2A
Battery charging current	0.6A
Battery	12V / 7Ah (not included)

## Environmental

Environmental class	Class II - Indoor - General according to EN50131
Operating temperature	0°C ÷ +40°C
Storage temperature	0°C ÷ +40°C
Relative humidity	up to 75% non-condensing

## General

Dimensions	298 x 285 x 83 mm
Weight	1.65Kg
Warranty	3 years
Certifications	CE



We reserve the right to introduce product modifications without notice

## Access Control Module

### Asguard ACM



- 2 doors in the base version
- Expandable to 4 doors using plug-in board
- 32,768 cardholders
- 71,500 access control events memory
- Metal case with tamper protection
- 3 year Warranty

### Description

Asguard ACM Access Control Module ensures stand-alone or networked access control for up to 2 doors in its base version and up to 4 doors when fitted with the Asguard ACE Access Control Extension.

### Features

Asguard ACM has an on-board database of access rights, being able to function even without any network connectivity.

### Key Functions

Asguard ACM is used for pedestrian and vehicle access control, time and attendance and visitors access control.

### Interoperability

Asguard ACM connects to standard access control readers on Wiegand and Clock-and-Data interfaces, including proximity and biometric readers.

### Connectivity

Remote management, configuration and monitoring can be done via the Asguard CP on RS485 or directly over IP, if fitted with the Asguard ETH Ethernet Module.

### Ease of Installation

Asguard ACM is supplied with all the accessories needed for easy installation.

# Technical Specification    Asguard ACM Access Control Module

Module Capacity	
Readers	2
Cardholders	32,768
Time zones	64
Master time zones	64
Access zones	64
Master access zones	64
Holidays	4 tables of 32 holidays each
Access events memory	71,500

CP Connection Ports	
Access control bus ports	1 x RS485
Baud rate	19,200
Maximum configuration	up to 30 additional readers per CP (15 2-door modules or any combination of 2-door and 4-door modules) unlimited when using IP connectivity on ACM

Computer/server interface	
IP	Using optional Ethernet plug-in module

Part Numbers	
Asguard ACM	0065-01002
Asguard ACM main board only	0065-01011
Asguard power supply board only	0065-01013
Spare plastic spacers	0065-01015

Module I/O	
Readers interface	2 Wiegand/Clock-and-Data interfaces (jumper selectable)
Access control inputs	2 door status monitoring inputs 2 request to exit (RQE) inputs
Other inputs	Battery status input Mains power monitoring input
Lock control outputs	2 dry contact lock outputs, 3A rated
Access signalling outputs	8 open collector outputs

Power	
Power input	12Vdc
Power consumption	70 mA in stand by 130 mA with both outputs ON

Power supply module	
Mains voltage	230Vac
Output voltage	14.5 Vdc
Available output current	2A
Battery charging current	0.6A
Battery	12V / 7Ah (not included)

Environmental	
Environmental class	Class II - Indoor - General according to EN50131
Operating temperature	0°C ÷ +40°C
Storage temperature	0°C ÷ +40°C
Relative humidity	up to 75% non-condensing

General	
Dimensions	298 x 285 x 83 mm
Weight	1.5Kg
Warranty	3 years
Certifications	CE



The Asguard ACM can be expanded to 4 readers using the Asguard ACE plug-in module.



We reserve the right to introduce product modifications without notice



## Intruder Alarm Module

### Asguard IAM



- Grade 4 according to EN 50131
- 16 supervised alarm inputs
- 2 dry contact outputs
- Expandable up to 144 intruder alarm zones
- Up to 16 alarm keypads for arming/disarming
- 3,000 intruder alarm events memory in CP
- Metal case with tamper protection
- 3 year Warranty

### Description

Asguard IAM Intruder Alarm Module is a serial bus connected module that expands the number of zones and outputs of the CP.

### Features

Asguard IAM features 16 double-end-of-line supervised inputs and 2 dry contact outputs. The inputs accept dry contact outputs from detectors. The 2 outputs can be used either to trigger a siren or communicator in alarm, or to control external devices.

### Key Functions

Asguard IAM is used for intruder detection and alarm, and remote alarm transmission via the CP.

### Interoperability

Asguard IAM accepts any dry-contact output detector, providing line supervision.

### Connectivity

Remote management, configuration and monitoring can be done via the Asguard CP on RS485 or over IP, if the CP is fitted with the Asguard ETH Ethernet Module.

### Ease of Installation

Asguard IAM is supplied with all the accessories needed for easy installation.

# Technical Specification    Asguard IAM Intruder Alarm Module

Module Capacity	
Intruder alarm zones	16

CP Connection Ports	
Intruder alarm bus ports	1 x RS485
Baud rate	19,200
Maximum configuration	up to 128 additional zones (up to 8 Intruder Alarm Modules)

Part Numbers	
Asguard IAM	0065-01004
Asguard IAM main board only	0065-01012
Asguard power supply board only	0065-01013
Spare EOL resistors	0065-01014
Spare plastic spacers	0065-01015

Module I/O	
Intruder alarm zone inputs	16 double end of line supervised inputs
Other inputs	Battery status input Mains power monitoring input
General purpose outputs	2 dry contact outputs, 3A rated
Software resettable voltage output	1 x 12Vdc, 0.5A rated

Power	
Power input	12Vdc
Power consumption	50 mA in stand by 100 mA in alarm

Power supply module	
Mains voltage	230Vac
Output voltage	14.5 Vdc
Available output current	2A
Battery charging current	0.6A
Battery	12V / 7Ah (not included)

Environmental	
Environmental class	Class II - Indoor - General according to EN50131
Operating temperature	0°C ÷ +40°C
Storage temperature	0°C ÷ +40°C
Relative humidity	up to 75% non-condensing

General	
Dimensions	298 x 285 x 83 mm
Weight	1.5Kg
Warranty	3 years
Certifications	CE



We reserve the right to introduce product modifications without notice

## Power Supply

### Asguard PWR



- Power supply for Asguard series
- Battery backup
- Mains power failure alarm output
- Tamper protection
- 3 year Warranty

### Description

Asguard PWR is switching power supply designed for security applications.

### Features

Asguard PWR offers a 14.5 Vdc output and has battery back-up. The battery is charged during normal operation.

### Key Functions

Asguard PWR provides 14.5 Vdc /2 A power for detectors and locks, whenever the power supply included in the Asguard panels and modules does not cover the consumption.

### Interoperability

Asguard PWR uses standard 12Vdc 7Ah batteries.

### Ease of Installation

Asguard PWR is supplied with all the accessories needed for easy installation.



Technical Specification

Asguard PWR Power Supply

Power supply	
Mains voltage	230Vac
Output voltage	14.5 Vdc
Available output current	2A
Battery charging current	0.6A
Battery	12V / 7Ah (not included)
Part Numbers	
Asguard PWR	0065-01009
Asguard power supply board only	0065-01013
Spare plastic spacers	0065-01015

Power supply I/O	
Mains power fail alarm	1 optocoupler
Environmental	
Environmental class	Class II - Indoor - General according to EN50131
Operating temperature	0°C ÷ +40°C
Storage temperature	0°C ÷ +40°C
Relative humidity	up to 75% non-condensing
General	
Dimensions	262 x 217 x 83 mm
Weight	1.1Kg
Warranty	3 years
Certifications	CE



## Access Control Extension

### Asguard ACE



- Expands ACM to 4 doors
- Plugs on the ACM board
- 32,768 cardholders via ACM
- 71,500 access control events memory via ACM
- 3 year Warranty

### Description

Asguard ACE Access Control Extension plugs on the ACM board to ensure stand-alone or networked access control for up to 4 doors per one box.

### Features

Asguard ACE uses the ACM on-board database of access rights, being able to function even without any network connectivity.

### Key Functions

Asguard ACE is used together with ACM for pedestrian and vehicle access control, time and attendance and visitors access control.

### Interoperability

Asguard ACE connects to standard access control readers on Wiegand and Clock-and-Data interfaces, including proximity and biometric readers.

### Connectivity

Remote management, configuration and monitoring is done through the ACM, via the Asguard CP on RS485 or directly over IP, if fitted with the Asguard ETH Ethernet Module.

### Ease of Installation

Asguard ACE is supplied with all the accessories needed for easy installation.

Technical Specification

Asguard ACE Access Control Extension

Extension Capacity	
Readers	2

ACM Connection	
Connection	plug-in on the ACM board
Fixing	2 spacers and screws

Part Numbers	
Asguard ACE	0065-01003

Extension I/O	
Readers interface	2 Wiegand/Clock-and-Data interfaces (jumper selectable)
Access control inputs	2 door status monitoring inputs 2 request to exit (RQE) inputs
Lock control outputs	2 dry contact lock outputs, 3A rated
Access signalling outputs	8 open collector outputs

Power	
Power input	Directly from ACM
Power consumption	50 mA in stand by 120 mA with both outputs ON

Environmental	
Environmental class	Class II - Indoor - General according to EN50131
Operating temperature	0°C ÷ +40°C
Storage temperature	0°C ÷ +40°C
Relative humidity	up to 75% non-condensing

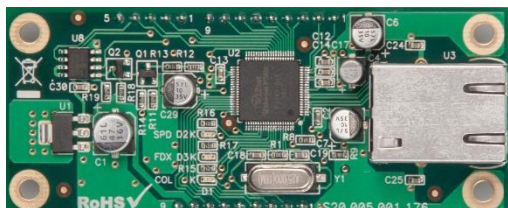
General	
Dimensions	78 x 73 x 20 mm
Weight	0.1Kg
Warranty	3 years
Certifications	CE



The Asguard ACE plug-in module is used to expand Asguard ACM to 4 readers.

## Ethernet Module

### Asguard ETH



- Provides IP connectivity to Asguard panels
- Can be used on Asguard CP and Asguard ACM
- 3 year Warranty

### Description

Asguard ETH is an Ethernet communicator that allows Asguard CP and ACM to connect directly to IP networks.

### Features

Asguard ETH is used for local or remote management of the Asguard CP or ACM via an IP network.

### Interoperability

Asguard ETH connects to standard Ethernet switches or routers.

### Connectivity

Asguard ETH plugs directly to the CP or ACM boards.

### Ease of Installation

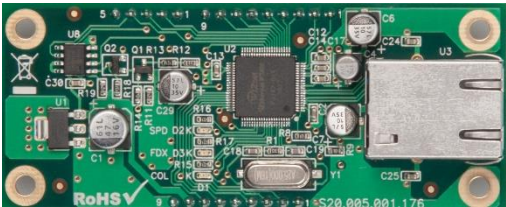
Asguard ETH is supplied with all the accessories needed for easy installation.

Technical Specification

Asguard ETH Ethernet Module

ACM Connection	
Connection	plug-in on the CP or ACM board
Fixing	2 spacers and screws
Network Interface	
IP	1 Ethernet port, RJ45
Part Numbers	
Asguard ETH	0065-01006

Power	
Power input	Directly from CP or ACM
Power consumption	50 mA
Environmental	
Environmental class	Class II - Indoor - General according to EN50131
Operating temperature	0°C ÷ +40°C
Storage temperature	0°C ÷ +40°C
Relative humidity	up to 75% non-condensing
General	
Dimensions	83 x 35 x 25 mm
Weight	0.03Kg
Warranty	3 years
Certifications	CE



The Asguard ETH plug-in module is used to provide IP connectivity to Asguard CP and Asguard ACM.



We reserve the right to introduct product modifications without notice

## Alarm Keypad

### Asguard KPD



- Intruder alarm keypad for arming/disarming
- Time & attendance functions
- Grade 4 according to EN 50131
- Up to 1 alarm keypads per system
- Tamper protection
- 3 year Warranty

### Description

Asguard KPD Keypad provides arming/disarming functions, time & attendance and general system operation for the Asguard panels.

### Features

Asguard KPD features a numeric keypad, menu navigation buttons, a function button for access to specific menu options and 2 buttons for quick arming/disarming.

### Key Functions

Asguard KPD is used for time and attendance, intruder detection and alarm and remote alarm transmission via CP.

### Grade 4

Asguard KPD fulfils the requirements to be used in Grade 4 security systems according to EN 50131.

### Interoperability

Asguard KPD connects to a standard access control reader on Wiegand interface, including proximity and biometric readers.

### Connectivity

Remote management, configuration and monitoring can be done via the Asguard CP on RS485 or over IP, if the CP is fitted with the Asguard ETH Ethernet Module.

### Ease of Installation

Asguard KPD is supplied with all the accessories needed for easy installation.



# Technical Specification    Asguard KPD Keypad

Keypad Features	
Display	2 x 16 characters
Keys	Numeric keys 0 to 9 Scroll keys < > ^ v Quick arm key Quick disarm key
LED	1 Status LED 1 Armed LED
Readers	1 (for time and attendance)
PIN code format	4 to 8 digits
Intrusion alarm users	128 (admin, service, installer, 8 x guards, 117 x users)
CP Connection Ports	
Intruder alarm bus ports	1 x RS485
Baud rate	19,200
Maximum configuration	up to 16 keypads
Part Numbers	
Asguard KPD	0065-01005

Keypad I/O	
Attendance reader interface	1 Wiegand interface
Reader power output	12Vdc
Power	
Power input	12Vdc
Power consumption	50 mA in stand by 90 mA in alarm
Environmental	
Environmental class	Class II - Indoor - General according to EN50131
Operating temperature	0°C ÷ +40°C
Storage temperature	0°C ÷ +40°C
Relative humidity	up to 75% non-condensing
General	
Dimensions	145 x 122 x 30 mm
Weight	0.25Kg
Warranty	3 years
Certifications	CE



We reserve the right to introduce product modifications without notice

## RS485 Isolated Repeater

### Asguard ISL



- Protection of long communication lines
- Repeater function
- 3 year Warranty

### Description

Asguard ISL is an optical isolator repeater for the RS485 communication lines.

### Features

Asguard ISL isolates the two devices communicating over RS485 and extends the maximum length of the RS485 bus by another 1000m.

### Key Functions

Asguard ISL is used to protect Asguard modules against electrical interference induced in the RS485 communication lines.

### Connectivity

Asguard ISL connects to RS485 ports of Asguard panels and modules.

### Ease of Installation

Asguard ISL is supplied with cable leads for easy installation.



We reserve the right to introduce product modifications without notice

Technical Specification

Asguard ISL RS485 Isolated Repeater

Isolator data	
Ports	2 RS485 ports
LEDs	2 LEDs for data transmission
Part Numbers	
Asguard ISL	0065-01007

Power	
Power input	9 ÷ 26Vdc
Power consumption	75 mA
Reverse polarity protection	yes

Environmental	
Environmental class	Class II - Indoor - General according to EN50131
Operating temperature	0°C ÷ +40°C
Storage temperature	0°C ÷ +40°C
Relative humidity	up to 75% non-condensing

General	
Dimensions	78 x 37 x 22 mm
Weight	0.07Kg
Warranty	3 years
Certifications	CE



We reserve the right to introduct product modifications without notice

## Access Timer

### Asguard TMR



- Count-down timer for access control filters
- 3 year Warranty

### Description

Asguard TMR is 3 digit counter for access control filters.

### Features

Asguard TMR shows the remaining time for an access. It is triggered by the Asguard ACM

### Interoperability

Asguard TMR operates only in connection with Asguard ACM.

### Connectivity

Asguard TMR connects on the open collector outputs of the ACM.

### Ease of Installation

Asguard TMR is supplied with cable leads for easy installation.

Technical Specification

Asguard TMR Access Timer

Access delay counter	
Display	3 digits 7 segment red LED
Connection	Wiegand (D0, D1)

Part Numbers	
Asguard TMR	0065-01008

Power	
Power input	5Vdc
Power consumption	75 mA

Environmental	
Environmental class	Class II - Indoor - General according to EN50131
Operating temperature	0°C ÷ +40°C
Storage temperature	0°C ÷ +40°C
Relative humidity	up to 75% non-condensing

General	
Dimensions	52 x 37 x 20 mm
Weight	0.03Kg
Warranty	3 years
Certifications	CE

The Asguard TMR uses the 2 open collector outputs of the Asguard ACM.

DISTRIBUTED BY