



SCETAP3535B

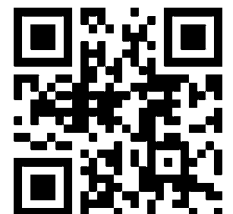
EL. HÖHENVERSTELLBARES SYSTEM MIT BODENPLATTE
EL. HEIGHT ADJUSTABLE SYSTEM WITH FLOOR PLATE

Conen Produkte GmbH & Co. KG
Conenstr. 4
54497 Morbach-Gonzerath

Germany

Tel.: +49 (0) 6533 75 - 203/ - 300
Fax: +49 (0) 6533 75 - 600
eMail: info@conen-interaktiv.de

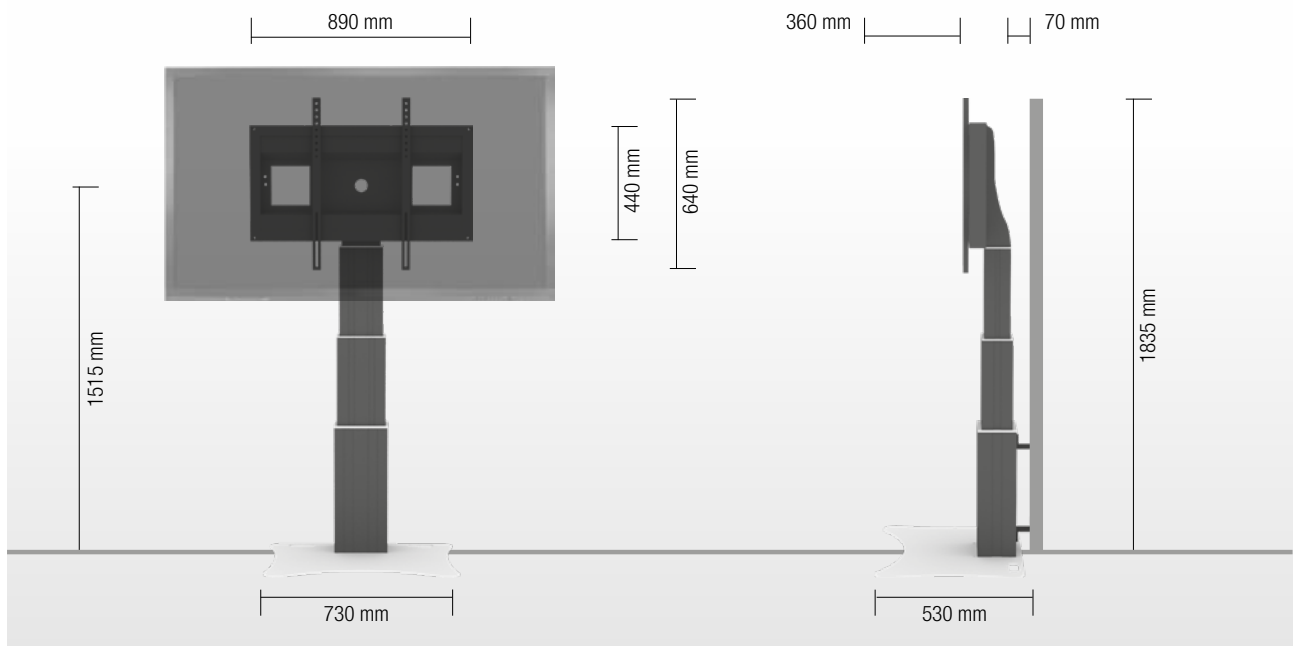
www.conen-interaktiv.de



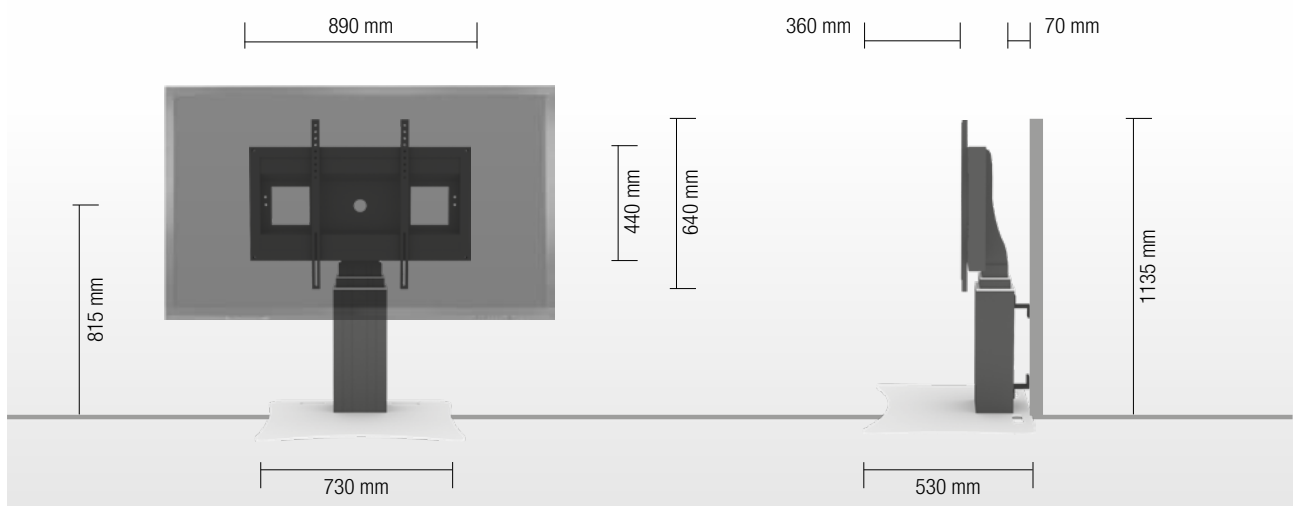
PRODUKTEIGENSCHAFTEN | PRODUCT FEATURES

- ◆ Elektrisch höhenverstellbare Pylone, schwarz eloxiert
- ◆ 700 mm Hub
- ◆ 8 mm starke Bodenplatte, RAL 9006 Weißaluminium
- ◆ Halterung zur Verwendung mit 42" – 100" Display
- ◆ VESA 200 x 200 bis 800 x 600
- ◆ Maximale Belastung ca. 150 kg
- ◆ Inkl. Wandabstandshalter (70 mm)
- ◆ Electrical height adjustable column, black anodized
- ◆ 700 mm height adjustment
- ◆ Floor plate made of 8 mm strong steel, powder-coated, RAL 9006 white aluminum
- ◆ Mount for use with 42" – 100" display
- ◆ VESA 200 x 200 up to 800 x 600
- ◆ Maximum load approximately 150 kg
- ◆ Incl. wall brackets (70 mm)

HÖCHSTE STELLUNG | HIGHEST POSITION



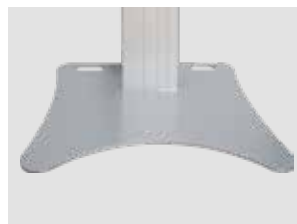
NIEDRIGSTE STELLUNG | LOWEST POSITION



DETAILANSICHTEN | DETAIL VIEWS



Schnappklammern erleichtern die Montage
Pull & release locking brackets for easier mounting of display

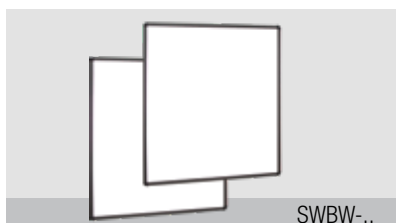


Bodenplatte
Floor plate



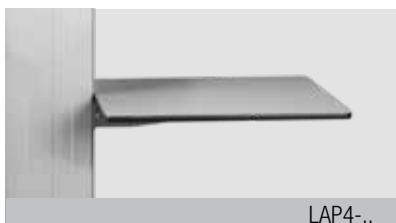
Elektrische Höhenverstellung
Wired remote control

WÄHLBARES ZUBEHÖR | AVAILABLE ACCESSORIES



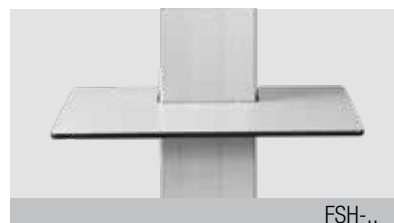
SWBW-..

2 Whiteboard Seitenflügel
2 whiteboard side wings



LAP4-..

Seitentisch
Side shelf



FSH-..

Ablagetisch
Front shelf



MINI-FUJI

Abschließbare Mini-PC Halterung
Lockable mini PC bracket



AFSCETAKB

Tastaturhalterung
Keyboard shelf



VCTSCETA

Halter für Videokonferenzkameras
Video conference camera top shelf



REM-FOOT

Fußschalter
Foot remote control



CCEL-EXT20

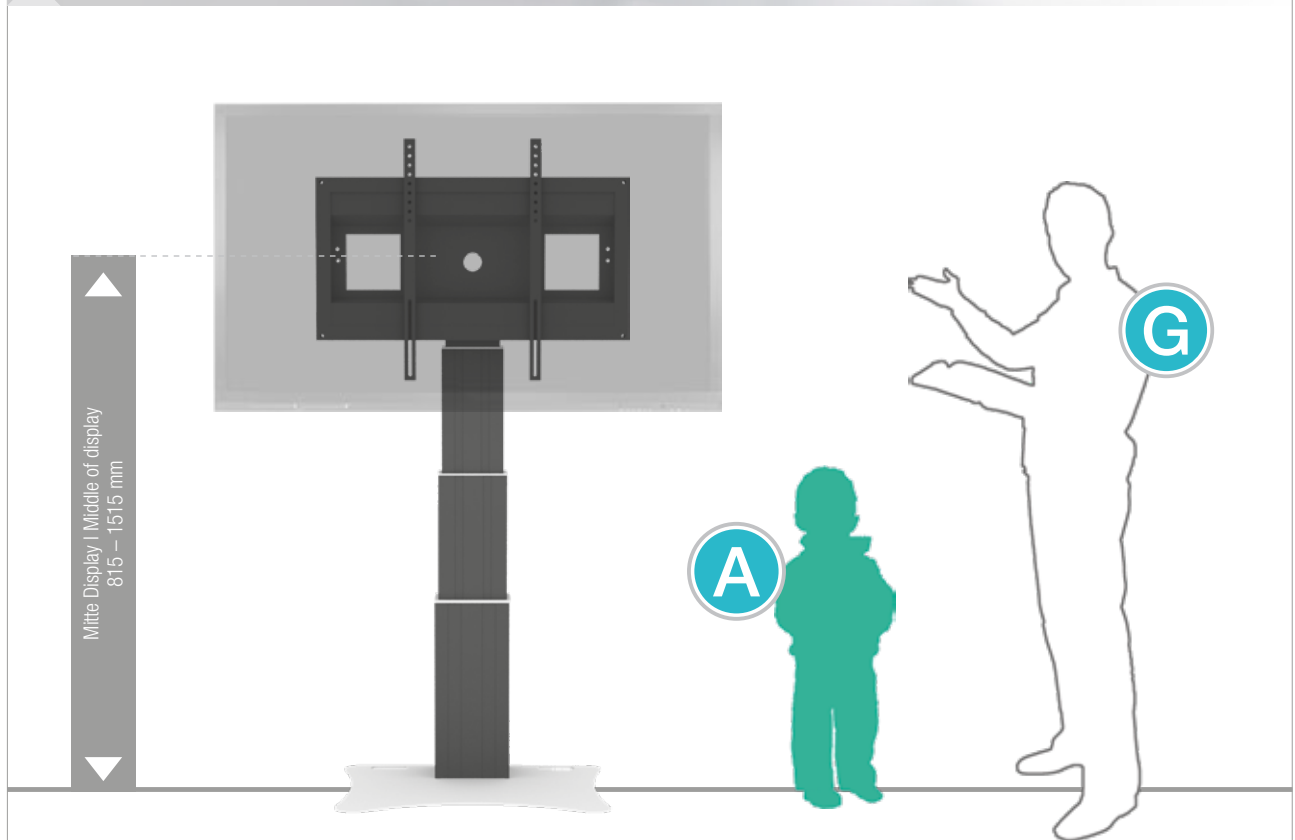
Verlängerung (200 mm)
Extender (200 mm)



SCHLIESS-VH

Display Sicherheitsschloss
Display securing padlock

GRÖSSENINDEX | SIZE INDEX



| | | | | | | | | |
|------------------------------|--------------|-------------|-------------|-------------------------------|-------------|---|--------------|----------------------|
| Bereich Department | Kindergarten | | | Grundschule Primary school | | Weiterführende Schule Secondary school | | Erwachsene Adults |
| | A | B | C | D | E | F | G | |
| Silhouette Silhouette | A | B | C | D | E | F | G | |
| Alter (Jahre) Age (years) | 2 – 3 | 3 – 4 | 4 – 7 | 6 – 11 | 11 – 14 | 13 – 16 | ab from 16 | |
| Körpergröße Body size (mm) | 930 – 980 | 1080 – 1210 | 1190 – 1420 | 1330 – 1590 | 1460 – 1765 | 1590 – 1880 | 1740 – 2070 | |
| Farbe Colour | Green | Purple | Yellow | Red | Green | Blue | | |

PACKEINHEITEN | PACKING UNITS

| Artikel-Nr. Item no. | Beschreibung Description | Packmaße Packing dimensions (mm) | Nettogewicht Net weight (kg) | Bruttogewicht Gross weight (kg) |
|------------------------------|---|--|------------------------------------|---------------------------------------|
| CCE3535WB | Elektrisch höhenverstellbare Pylone, 2 x 350 mm Hub, L = 585 mm electrical height adjustable column, 2 x 350 mm / 13.8" height adjustment, L = 585 mm / 23" | 760 x 270 x 220 | 21,2 | 24,0 |
| AF-SCETA-N | Display Halterung Display mount | 160 x 900 x 450 | 11,7 | 13,6 |
| PSTSCETA | Bodenplatte Floor plate | 20 x 750 x 570 | 21,0 | 21,8 |
| Gesamtgewicht Total weight | | | 53,9 | 59,4 |