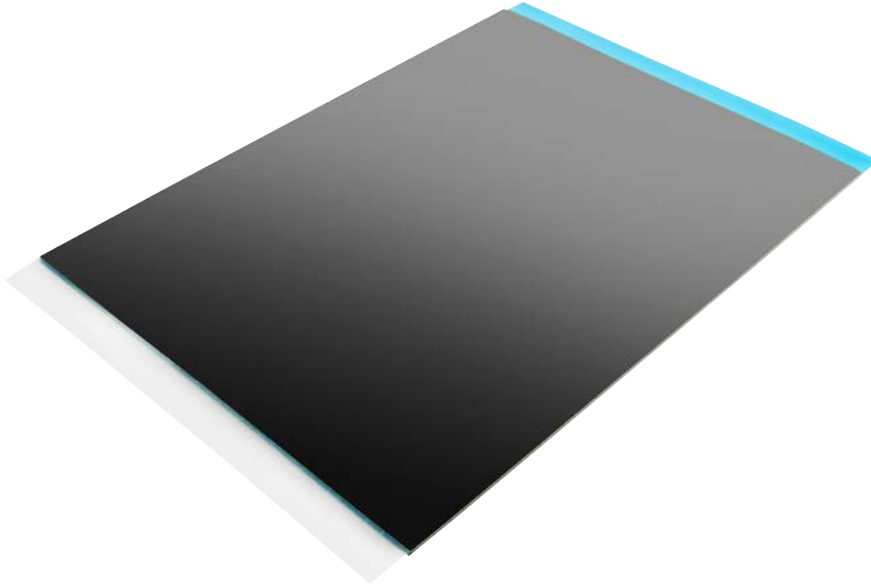


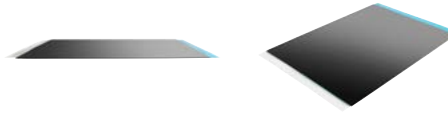
Data sheet

HP (Bulk 10) Desktop Mini VESA Quick Deploy Adhesive Kit



Use the HP (Bulk 10) DM VESA Quick Deploy Adhs Kit to quickly and securely mount your HP Desktop Mini and HP Desktop Mini Security/Dual VESA Sleeve v2 (2JA32AA) vertically to an aluminum, glass, or smooth pine wood surface, no screws or tools required.

Specifications



HP (Bulk 10) Desktop Mini VESA Quick Deploy Adhesive Kit

Model number	1RL88A6
Compatibility	HP 260 Desktop Mini, HP ProDesk 400 Desktop Mini, HP ProDesk 600 Desktop Mini, HP EliteDesk 705 Desktop Mini, HP EliteDesk 800 Desktop Mini (*only works with HP Desktop Mini Security/Dual VESA Sleeve v2 2JA32AA or HP Desktop Mini Security/Dual VESA Sleeve G1K22AA)
Dimensions	Out of Package: 3.8 x 15.6 x 7.7 cm (1.5 x 6.14 x 3.03 in) Dimensions (case or master carton, metric): 36 x 32 x 30 cm (14.17 x 12.6 x 11.81 in) Case or master carton quantity: 1000 pcs Count of carton per pallet layer: 6 Count of layers in pallet: 2 Quantity per Pallet: 12000 pcs
Weight	Unpackaged: 1PCS=0.02 kg (0.04 lb)
Country of Origin	China
Box Contents	10 Double-sided adhesive pads
Possible Configurations	Must be used attached to HP Desktop Mini Security/Dual VESA Sleeve v2 Mount 2JA32AA or HP Desktop Mini Security/Dual VESA Sleeve Mount G1K22AA, vertically to an aluminum, glass, or pine wood surface, no screws or tools required.

Sign up for updates
hp.com/go/getupdated



Share with colleagues



Rate this document

© Copyright 2017 HP Development Company, L.P. The information contained herein is subject to change without notice. The only warranties for HP products and services are set forth in the express warranty statements accompanying such products and services. Nothing herein should be construed as constituting an additional warranty. HP shall not be liable for technical or editorial errors or omissions contained herein.

