



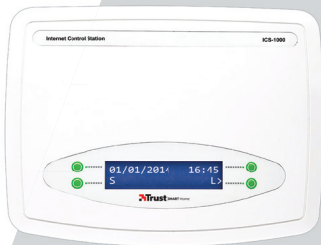
---

[www.trustsmarhome.com](http://www.trustsmarhome.com)

---



USER MANUAL



Item 71080 Version 1.0  
Visit [www.trustsmarthome.com](http://www.trustsmarthome.com)  
for the most recent instructions

INTERNET CONTROL STATION



## ICS-1000 INTERNET CONTROL STATION

---

Read these simple guidelines. Not following them may be dangerous and faulty installation will invalidate any warranty that may apply to this product.

### **WIRELESS SIGNAL**

- The 433.92 MHz radio signal passes through walls, windows and doors.
- Indoor range: up to 30 m. Outdoor range: up to 70 m (optimal conditions).
- The range is dependent on local conditions, such as the presence of metals. For example, the thin metal coating in Low-emissivity (Low-E) glass can have a negative impact on the range of radio signals.
- There may be restrictions on the use of this device outside the EU. If applicable, check whether this device complies with local directives.

### **UPDATES & SUPPORT**

Frequently check [www.trustsmarhome.com](http://www.trustsmarhome.com) for hardware and software updates.

If you prefer to be informed automatically, sign up for our newsletter.

You can enter your e-mail address at the bottom of our website ([www.trustsmarhome.com](http://www.trustsmarhome.com)).



### **LIFE-SUPPORT**

Never use Trust Smart Home products for life-support systems or other applications in which equipment malfunctions can have life-threatening consequences.

### **INTERFERENCE**

All wireless devices may be subject to interference, which could affect performance. The minimum distance between two receivers should be at least 50 cm.

### **REPAIRING**

Do not attempt to repair or modify this product. In case you doubt this product is functioning correctly, please take the device back to the store where you bought it.

### **WATER-RESISTANCE**


This product is not water-resistant and thus not suitable for use outside. Use a dry cloth to clean this product. Do not use harsh chemicals, cleaning solvents, or strong detergents..

### **HANDLING**

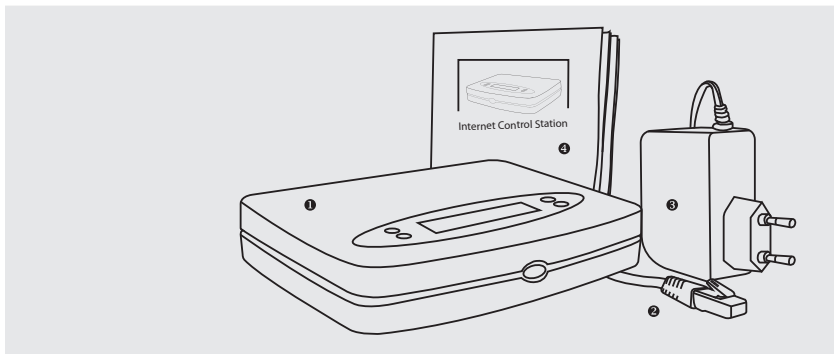
Do not drop, knock, or shake the device. Rough handling can break internal circuit boards and fine mechanics.

### **ENVIRONMENT**

Do not expose the product to excessive heat or cold, as it can damage or shorten the lifespan of electronic circuit boards and batteries.



## ICS-1000 INTERNET CONTROL STATION

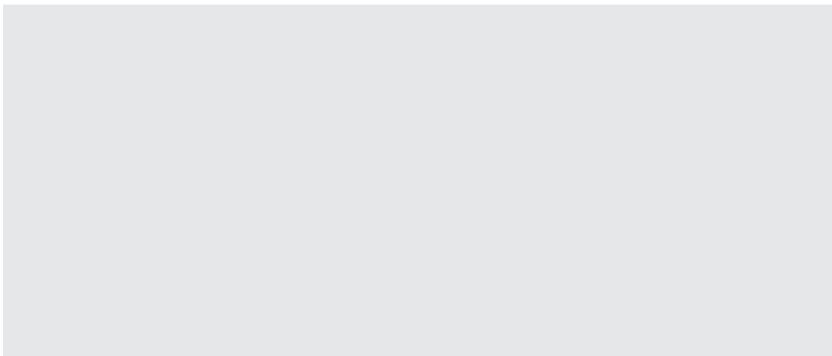


### Package contents

First, please check if the package contains the following items:

- ❶ Internet Control Station
- ❷ RJ-45 cable
- ❸ Power adapter
- ❹ Quick installation guide

ICS-1000 INTERNET CONTROL STATION



NOTE: Visit [www.trustsmarthome.com](http://www.trustsmarthome.com) frequently to check if updates are available

## ICS-1000 INTERNET CONTROL STATION



### 1. Connect the internet control station to your modem/router

❶ First, connect the Internet Control Station to the modem/router using the RJ-45 cable.

❷ Then, connect the power adapter to the Internet Control Station and insert the plug of the power adapter into a wall socket. The display of the Internet Control Station will illuminate.

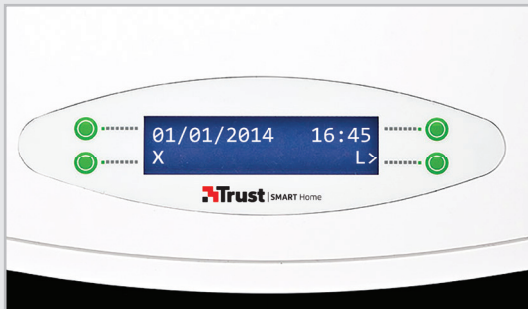
## ICS-1000 INTERNET CONTROL STATION



❶ On the first line the display will show the date and time and on the second line the letters "S" and "L". If this is not the case please check the following pages, otherwise continue to page 9.



## ICS-1000 INTERNET CONTROL STATION



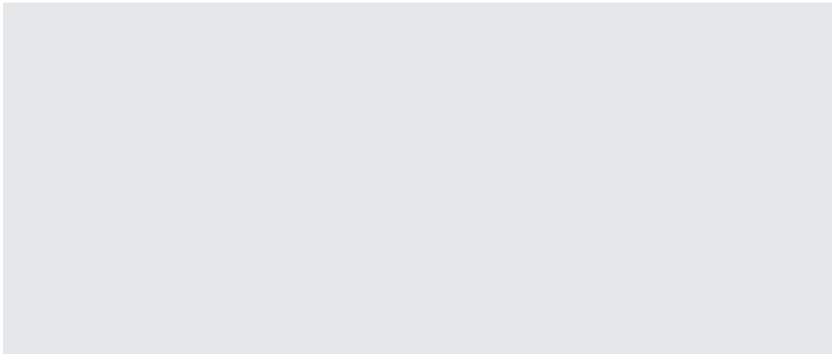
### Display information is not correct

#### On the second line of the display an "X" is shown instead of an "S"

Go to option CLOUD SERVER in the MENU of your ICS-1000 (this option will become available after pressing the topright green button multiple times). At the option CLOUD SERVER, choose ON and wait until you see the display with the date and time again. Additionally the letter "S" will now appear.

#### The display shows the message CHECK CABLE

This message indicates that there is an issue with the RJ-45 cable. Make sure that this cable is connected correctly. If this is indeed the case, try another cable or port on your router.



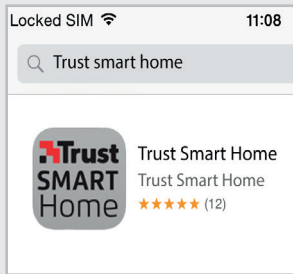
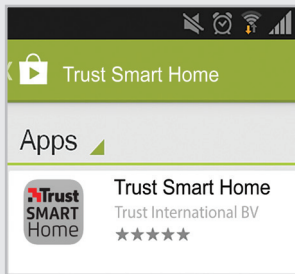
**The display shows the message TIME NOT SET**

This message indicates that your ICS-1000 is not connected to internet. First, try to connect your ICS-1000 on another port of your router. If the message still appears afterwards you need to look at what is stated regarding SERVER NO REPLY.

**The display shows the message RESET ROUTER or SERVER NO REPLY**

As the message already indicates, you need to reset your router by unplugging the power adapter of your router for a couple of seconds. Make sure the ICS-1000 is not connected to your router as soon as you repower your router. When your router is fully operational again, you can reconnect your ICS-1000 with your router.

## ICS-1000 INTERNET CONTROL STATION



## 2. Install the app

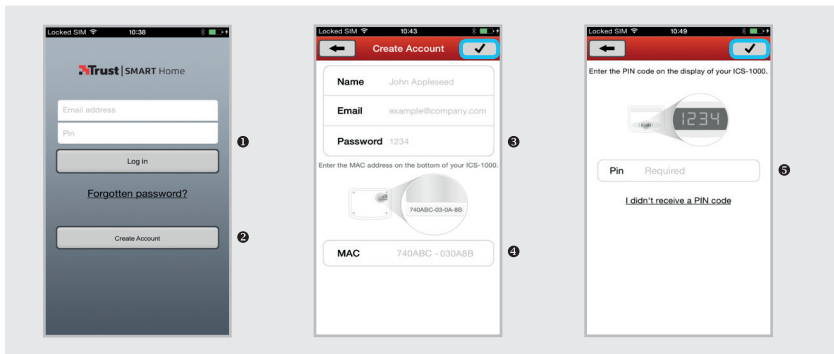
### Android

Open the Play Store, search for the Trust Smart Home app and install the app on your mobile device.

### iOS

Open the App store, search for the Trust Smart Home app and install the app on your mobile device. (if you are using an iPad, please select iPhone only when searching)

NOTE: This is because it is a smartphone app which is compatible with a tablet, this will cause a difference in the app display



### 3. Create an account/log in

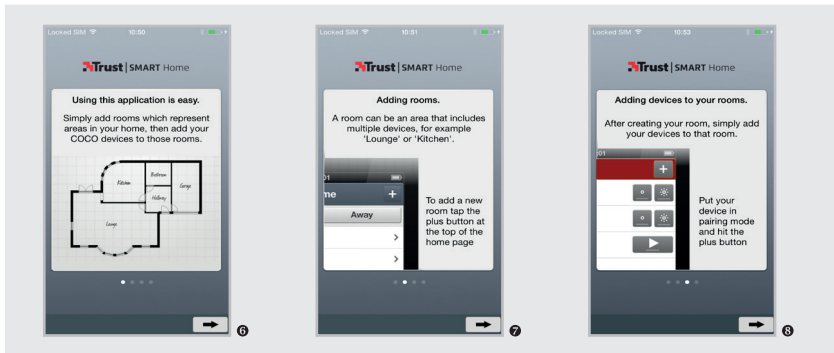
- ❶ Already have an account?  
Enter your E-mail address and Password and press the “Log in” button. If you forgot your Password you can press “Forgotten password?”
- ❷ Don't have an account yet?  
Press the “Create Account” button.
- ❸ Enter your name, e-mail and a password.
- ❹ Complete the MAC address by adding the remaining part of the MAC address that is

displayed at the bottom of your ICS-1000. Then press .


- ❺ After pressing  a PIN code appears in the display of your ICS-1000. Enter this code and press .

Important notice: To operate an ICS-1000 you are required to create an account. With this account you can use the app on other smartphones / tablets. It is not possible to control more than one ICS-1000 with an account.

## ICS-1000 INTERNET CONTROL STATION

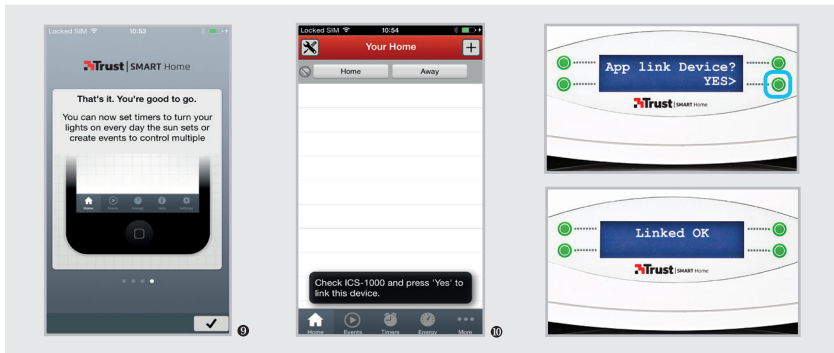


6 After the first login a short explanation of the app is shown once.

7 By pressing  you can go to the next page.

8 Press  to continue to the next page.

## ICS-1000 INTERNET CONTROL STATION



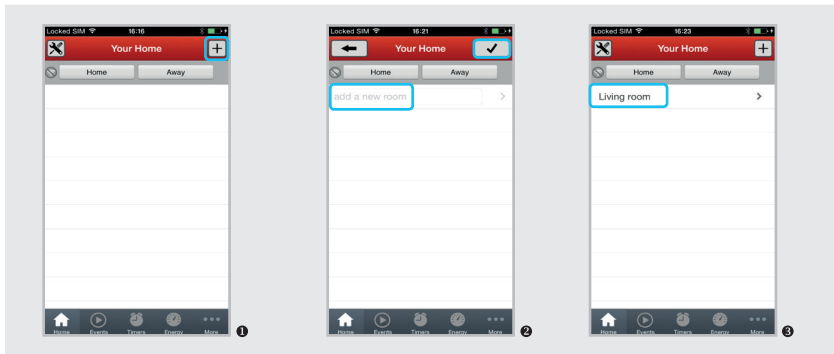
9 To exit this explanation press . Make sure you are near your ICS-1000.

10 As soon as this message appears, look at the display of your ICS-1000

In the display of your ICS-1000 you will see the question displayed in the above image. Choose YES by pressing the green button. Don't see this question? Make sure you are connected to the WiFi network distributed by the router to which the ICS-1000 is connected.

Your ICS-1000 will now display the text: "Linked OK".

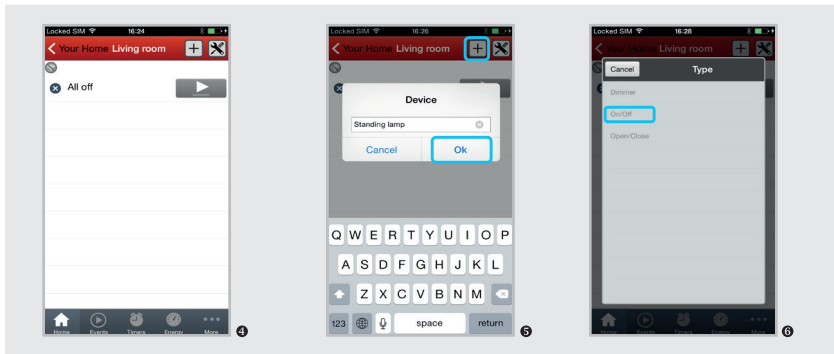
## ICS-1000 INTERNET CONTROL STATION



### 4. Set up a new configuration

- 1 Press the **+** button to create a new room.
- 2 Enter the desired name for this room and press **✓**.
- 3 You will now see the first room (in this example: Living room). Now select this room.

## ICS-1000 INTERNET CONTROL STATION



4 The page of the selected room will be shown, with the "All off" command added automatically.

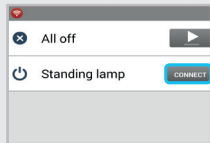
5 Press **+** to add a device. Enter a desired name and press "OK".

6 Now select a device type (corresponding with your Trust Smart Home receiver). Use "Open Close" for sun blinds.

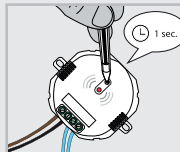


## ICS-1000 INTERNET CONTROL STATION

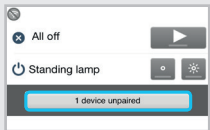
### Android



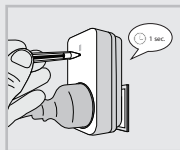
7 a



### iOS



7 b



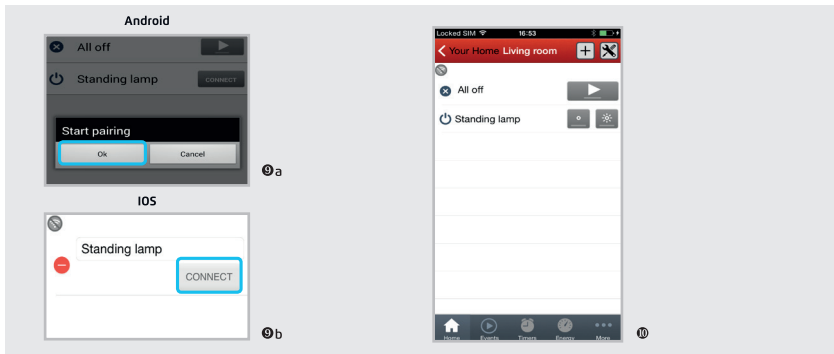
8

**7 a** ANDROID: The device will now be shown with a **CONNECT** button. Press this button.

**7 b** IOS: The device will now be shown with a “1 device unpaired” button. Press this button.

**8** Activate the learn mode of the corresponding Trust Smart Home receiver (see receiver’s manual).

## ICS-1000 INTERNET CONTROL STATION



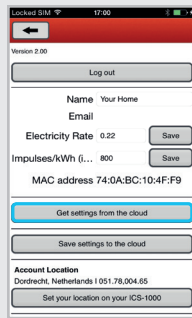
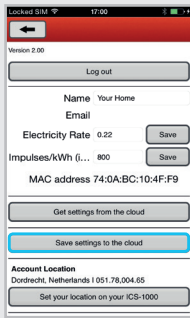
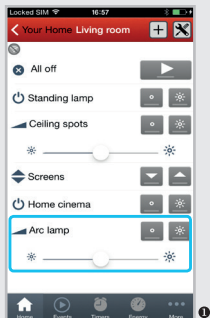
**9a** ANDROID: When the LED indicator of the receiver blinks, press OK. The receiver will now save the signal.

**9b** IOS: When the LED indicator of the receiver blinks, press CONNECT. The receiver will now save the signal.

**10** You are now able to control the device wirelessly with the corresponding buttons.

Repeat the previous steps to add more rooms and/or devices.

## ICS-1000 INTERNET CONTROL STATION



### 5. Wireless control

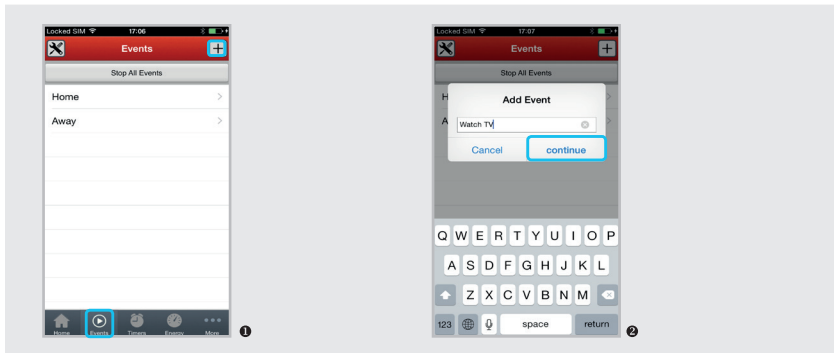
❶ Each type of device has its own set of buttons, for example on/off or open/close. If you are using a dimmer you can dim the light with the slider.

To control these devices also on another smartphone/tablet you need to save your settings to the server.

To do this go to the settings page (via the more button) and press "save settings to the CLOUD"

❷ It is highly recommended to save your settings to the cloud every time you have made any changes to the settings.

❸ When your settings have been saved to the CLOUD you can log in to the app on another mobile device and press "Get settings from the CLOUD"



## 6. Create an event

You can set up an event that allows you to activate up to 10 actions in one go. After setting up this event you can activate it by pressing a single button.

It is also possible to activate this event automatically by setting up a timer for this event.

### Home & Away

In this chapter you learn to set up an event.

Likewise you can add actions to the events Home and Away, which can be operated with the corresponding Home and Away buttons in the Home page.

- 1 Go to the “Events” tab and press **+** to add an Event.
- 2 Enter a desired name for the event and press Continue.

## ICS-1000 INTERNET CONTROL STATION

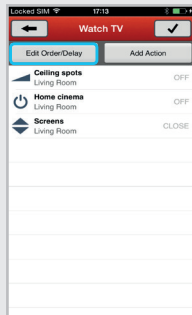
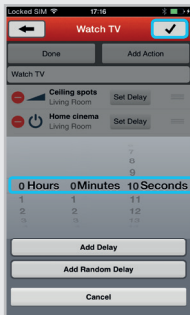
The image displays three screenshots from the ICS-1000 mobile application. The first screenshot, labeled '3', shows the 'Select Action' screen for the 'Living Room'. It lists several actions: 'All off', 'Standing lamp', 'Ceiling spots', 'Screens', 'Home cinema', and 'Arc lamp'. The 'Arc lamp' action is selected, indicated by a blue box around its icon. The second screenshot, labeled '4 a', shows the 'Away' screen. The 'Standing la...' action is selected, and the 'Add Delay' button is highlighted with a blue box. The third screenshot, labeled '4 b', shows the 'Edit Order/Delay' screen. The 'Edit Order/Delay' button is highlighted with a blue box, and a list of actions is shown: 'Ceiling spots', 'Home cinema', and 'Screens'.

**3** You can now add up to 10 actions by checking the boxes in front of the action. After selecting press .

**4 a** ANDROID: There is a standard 3 second delay between activating/de-activating events. To increase this delay press "Add Delay"

**4 b** iOS: There is a standard 3 second delay between activating/de-activating events. To increase this delay press "Edit Order/Delay"

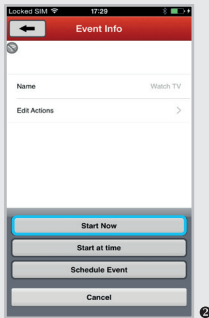
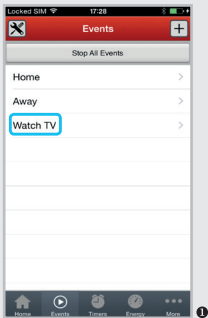
## ICS-1000 INTERNET CONTROL STATION



5 In this example a delay of 10 sec is added. You can also add a random delay. To add the delay press Add Delay.

6 To adjust a delay, delete an action or change the order of actions, you can press Edit Order/Delay.

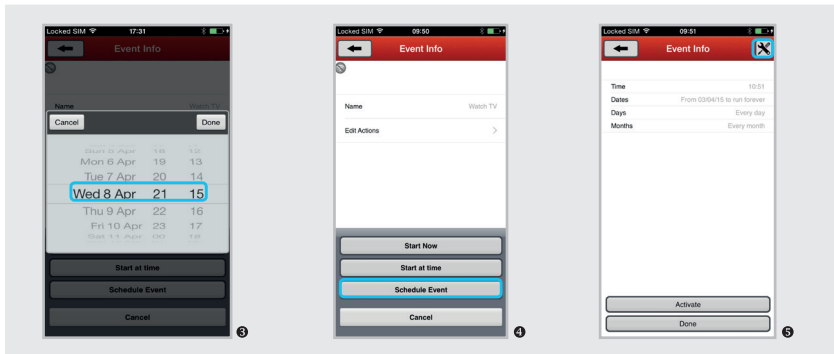
## ICS-1000 INTERNET CONTROL STATION



### 7. Start an event

1 In the 'Events page' there is an overview of all the events. Press on an event to select it.

2 To start the event simply press "Start Now". You can also press "Start at time".



## 8. Program events via a timer

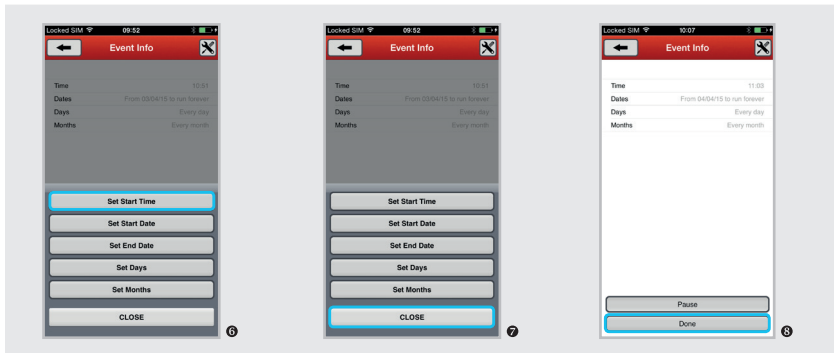
3 This allows you to start the event once at a desired time. In this example next Wednesday at 21:15.

4 When you want to schedule an event, choose the 'Schedule Event' option.

5 You will now see the default settings for this timer. You can change these settings by pressing ✕.



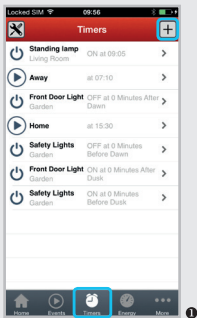
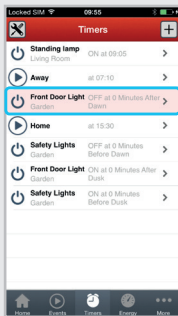
## ICS-1000 INTERNET CONTROL STATION



6 You can easily edit the start time settings via the 'Set Start Time' button.

7 When all settings are how you want them click the 'CLOSE' button.

8 Press 'Done' to confirm your new settings.

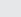


## 9. Program a timer

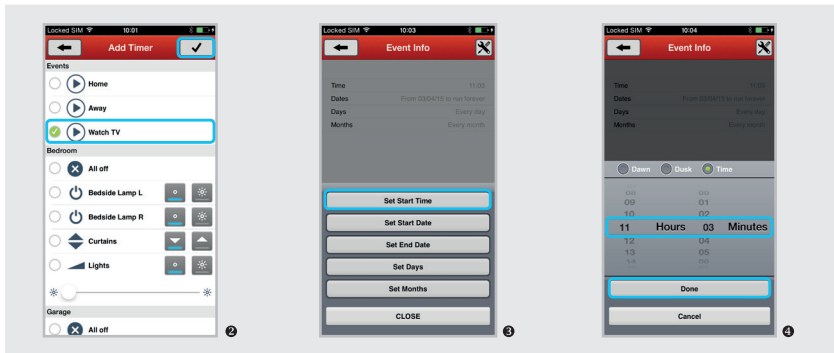
When a timer is paused that timer will get a red background in the timer overview.

Besides setting a timer for events you can also set an individual timer or couple an individual timer to an event.

In total you can set a maximum of 32 timers and events, for instance you can set 16 timers and 16 events or 20 timers and 12 events.

1 Click on 'Timers' and then click  on in the top right corner

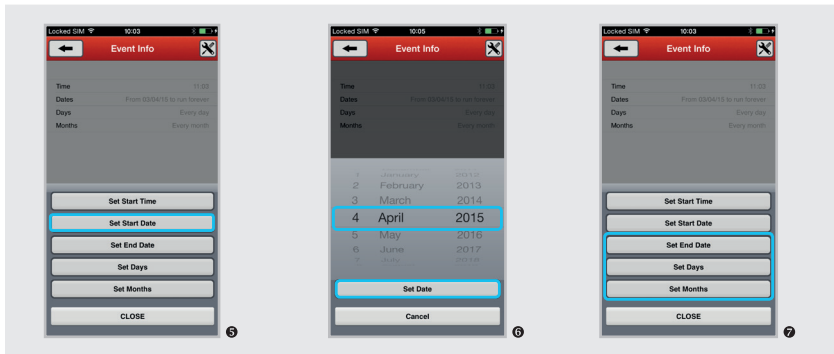
## ICS-1000 INTERNET CONTROL STATION



2 Now select the desired device or event so that it's checked in and press  in the top right corner.

3 Press the 'Set Start Time' button to configure the settings of the selected timer

4 Set the desired time and click 'Done' to confirm your settings

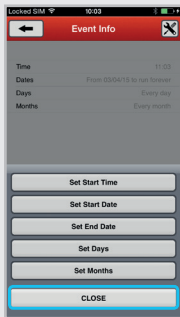


5 To configure a start date press the 'Set Start Date' button.

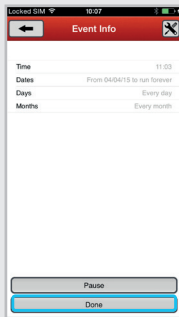
6 Make sure you always set a timer to a future date. So if at 11am you want to set a timer to activate at 10am make sure it's set for the next day.

7 You can set the desired end date, the days and the months for a timer. By default a timer will activate every day and month indefinitely, unless you change the settings.

## ICS-1000 INTERNET CONTROL STATION

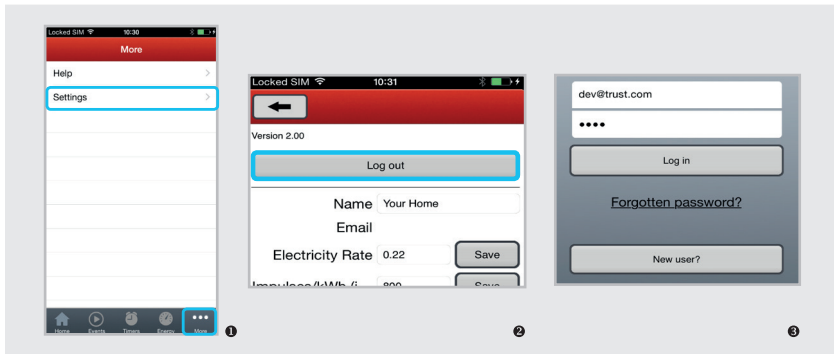


8 When you finished configuring the settings press the 'CLOSE' button.



9 To save the timer to your ICS press the 'Done' button.

In total you can set a maximum of 32 timers and events, for instance you can set 16 timers and 16 events or 20 timers and 12 events.



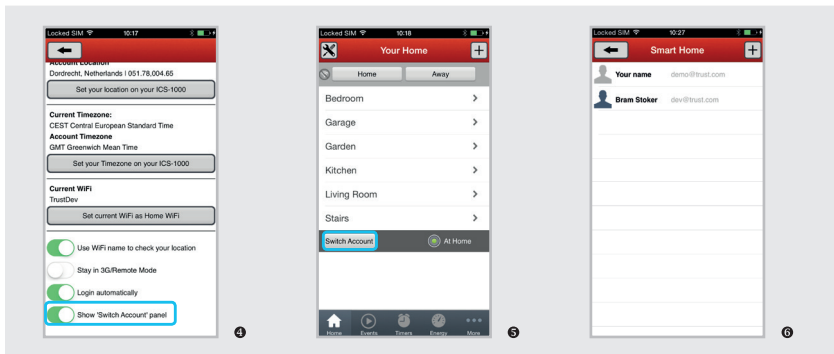
## 10. App Settings

If you are using multiple ICS-1000 on different locations you can easily switch accounts.

That way you can control more than only your ICS-1000 at home but also the ones at different locations.

- 1 Click the 'More' button and then click the 'Settings' button.
- 2 To change accounts you need to log out first.
- 3 Now you can Log in with a different account or set up a new account by clicking 'Create Account' Please follow the steps described from page 10.

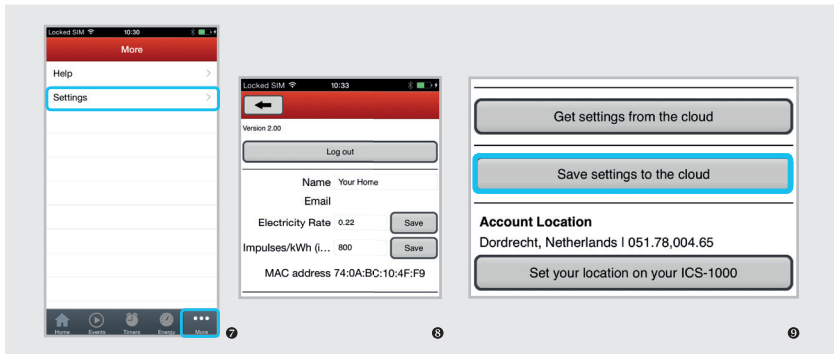
## ICS-1000 INTERNET CONTROL STATION



4 To easily switch between your accounts you should activate the “Switch Accounts” option on the settings page.

5 When going to the home page after activating the switch account option you can press the “Switch Account” button.

6 You can now simply select the desired account by pressing the e-mail address.



7 Click the 'More' button and then click the 'Settings' button. At the settings menu you can configure the app settings.

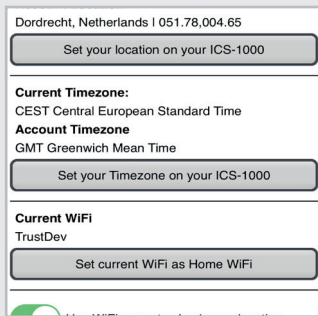
8 You can easily save your electricity rate and Imp/kWh so that you can get an accurate measurement of your usage and costs after coupling your EML-1000 eco-meter. The Imp/kWh values can be found on your meter.

9 To definitively save all your settings you need to save your settings to the web server by clicking the 'Save settings to the CLOUD' button

By saving your settings to the web server you can easily access these settings from another smartphone or tablet.



## ICS-1000 INTERNET CONTROL STATION



Dordrecht, Netherlands | 051.78.004.65

Set your location on your ICS-1000

---

**Current Timezone:**  
CEST Central European Standard Time


**Account Timezone**  
GMT Greenwich Mean Time

Set your Timezone on your ICS-1000

---

**Current WiFi**  
TrustDev

Set current WiFi as Home WiFi



By setting your correct location and time zone at the settings above you will get the correct times for sun rise and sun set, to change your location you need to have GPS enabled on your device.

You can also set a wifi network as home, by doing this the APP will automatically detect if you are at home or not. If connected to the designated network you can start use the switches locally and quickly.

- Use WiFi name to check your location
- Stay in 3G/Remote Mode
- Login automatically
- Show 'Switch Account' panel

**Using the wifi name to check your location.**

By enabling this option the APP will automatically detect if you are connected to your home network. If you are connected to your home network you will enjoy quick and local switching of your devices. If you are not connected to your home network but another network the APP will detect that and all switching will be done via an external connection.

**Stay in 3G/Remote Mode:** When you have this option enabled you will always switch via the internet (external connection) even when you are home.

**Login automatically:** When this option is enabled the app will always login automatically when opened.

**Show 'Switch Account' panel:** Enable this option to easily switch between different account, see page 28 for more information.

**Only for Android:** Show App tips: By selecting this option, you will see tips when adding a device, event, timer etc. you will also be informed when switching to and from Wifi.

## ICS-1000 INTERNET CONTROL STATION



### 9. ICS-1000 - settings

With the green buttons on the ICS-1000 you can walk through below menu options:

#### 1 SET TIME ZONE

Adjust the time on the screen of your ICS-1000 as desired (-1 hour/+1 hour).

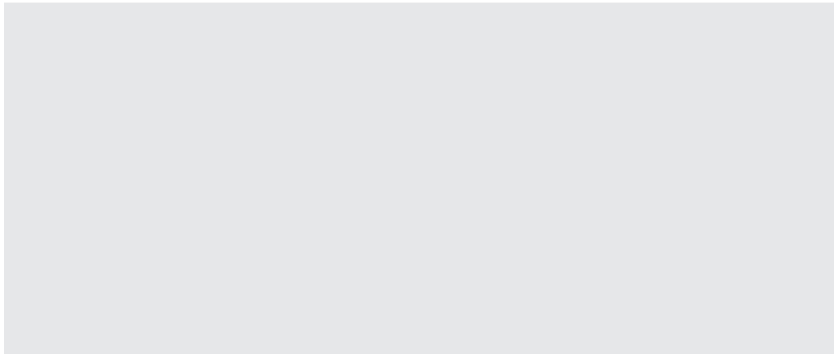
#### 2 SET SUMMERTIME

Summertime is switched on automatically (AUTO). This option allows you to switch summertime off (OFF).

#### 3 SYSTEM

This option informs you about the amount of timers (T) and events (E) stored on your ICS and the software version when choosing INFO. By selecting MAC/IP you can check your MAC address and the IP address of your ICS-1000. The (R) stands for the amount of running timers.

## ICS-1000 INTERNET CONTROL STATION



### ❶ RESET

With this option all registered smartphones and tablets will be deleted as well as all timers/ events

### ❷ BRIGHTNESS

By enabling the DIM option, the illumination of the display will be decreased.

### ❸ CLOUD SERVER

If you only want to use your ICS-1000 via Wi-Fi,

enable the OFF option. With OFF enabled you won't connect to the cloud server and your ICS-1000 can't be controlled from outside the range of your Wi-Fi. This also disables downloading new firmware when updating.

### ❹ ENERGY MONITOR (UNLINK)

Allows you to disconnect an optional energy monitor which will be available soon.

**CE Declaration of conformity**

Trust International B.V. declares that the TRUST SMART Home product:

model: ICS-1000 Control Station  
item number: 71080  
intended use: Indoor

is in compliance with the essential requirements and other relevant provisions of the following directives: EMC Directive, Low Voltage Directive and R&TTE Directive.

The product is compatible with the following norms/standards:

EN 301 489-1 V1.9.2 (2011-09)  
EN 301 489-3 V1.6.1 (2013-08)  
EN 300 220-1 V2.4.1 (2012-05)  
EN 300 220-2 V2.4.1 (2012-05)  
EN 55022: 2010+AC: 2011 Class B  
EN 61000-3-2: 2006+A1:2009 +A2:2009 Class A  
EN 61000-3-3: 2008  
EN 61000-4-2: 2009  
EN 61000-4-3: 2006 +A1:2008+A2:2010  
EN 61000-4-4: 2012; EN 61000-4-5: 2006  
EN 61000-4-6: 2009; EN 61000-4-11: 200  
IEC 60950-1: 2005 (2nd Edition); Am 1:2009  
EN 60950-1: 2006+A11:2009+A1:2010+A12:2011

Manufacturer/Authorised representative,



H. Donker, Procurement Director  
Dordrecht, 1-1-2015

**TRUST SMART Home**  
LAAN VAN BARCELONA 600  
3317DD DORDRECHT  
THE NETHERLANDS  
[www.trustsmarthome.com](http://www.trustsmarthome.com)



If possible, dispose of this product at a recycling center. Do not dispose of this product with the household waste.

### Warranty

This product is covered by the legal warranty that applies to your country and it begins on the day of purchase. For additional information, visit: [www.trustsmarthome.com/warranty/](http://www.trustsmarthome.com/warranty/)

### Copyright

The contents of this manual are subject to copyright protection. Without prior written permission, reproducing or copying is prohibited. Information in these documents is subject to change without prior notice. Check [www.trustsmarthome.com](http://www.trustsmarthome.com) for updates.