

# Inspiron 14 5000

## Setup and Specifications

Computer Model: Inspiron 14-5468  
Regulatory Model: P64G  
Regulatory Type: P64G006



# Notes, cautions, and warnings

---



**NOTE:** A NOTE indicates important information that helps you make better use of your computer.



**CAUTION:** A CAUTION indicates either potential damage to hardware or loss of data and tells you how to avoid the problem.



**WARNING:** A WARNING indicates a potential for property damage, personal injury, or death.

---

© 2016 Dell Inc. All rights reserved. This product is protected by U.S. and international copyright and intellectual property laws. Dell and the Dell logo are trademarks of Dell Inc. in the United States and/or other jurisdictions. All other marks and names mentioned herein may be trademarks of their respective companies.

2016-08

Rev. A00

# Contents

- Set up your computer..... 5**
- Views..... 8**
  - Front..... 8
  - Left..... 8
  - Right..... 9
  - Base..... 10
  - Display..... 11
  - Back..... 12
- Specifications..... 13**
  - Dimensions and weight..... 13
  - System information..... 13
  - Memory..... 13
  - Ports and connectors..... 14
  - Communications..... 14
  - Audio..... 14
  - Storage..... 15
  - Media-card reader..... 15
  - Keyboard..... 15
  - Camera..... 15
  - Touch pad..... 16
  - Power adapter..... 16
  - Battery..... 16
  - Display..... 17
  - Video..... 17
  - Computer environment..... 18
- Keyboard shortcuts..... 19**

**Getting help and contacting Dell..... 21**  
    Self-help resources..... 21  
    Contacting Dell.....22

# Set up your computer

---

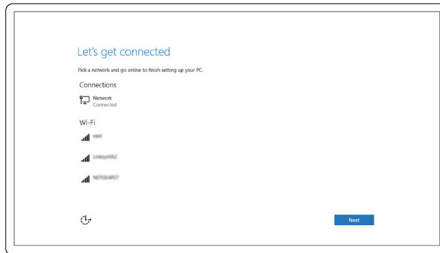
- 1 Connect the power adapter and press the power button.



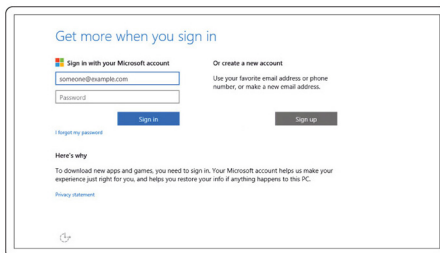
## 2 Finish operating system setup.

### For Windows:

- a) Connect to a wireless network.



- b) Sign-in to your Microsoft account or create a new account.



### For Ubuntu:

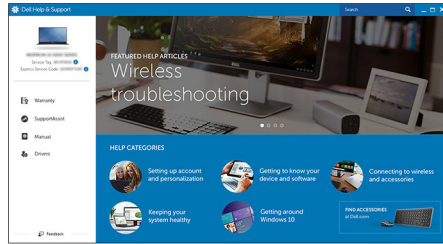
Follow the instructions on the screen to finish setup.

### 3 Locate Dell apps.



Register your computer

Dell Help & Support



SupportAssist — Check and update your computer

# Views

---

## Front



### 1 Power and battery-status light/hard-drive activity light

Indicates the battery-charge status or the hard-drive activity.



**NOTE:** Press Fn+H to toggle this light between power and battery-status light and hard-drive activity light.

#### Hard-drive activity light

Turns on when the computer reads from or writes to the hard drive.

#### Power and battery-status light

Indicates the power and battery-charge status.

**Solid white** — Power adapter is connected and the battery has more than 5% charge.

**Amber** — Computer is running on battery and the battery has less than 5% charge.

#### Off

- Power adapter is connected and the battery is fully charged.
- Computer is running on battery and the battery has more than 5% charge.
- Computer is in sleep state, hibernation, or turned off.

## Left



### 1 Power-adapter port



Connect a power adapter to provide power to your computer and charge the battery.

**2 Network port**

Connect an Ethernet (RJ45) cable from a router or a broadband modem for network or internet access.

**3 HDMI port**

Connect a TV or another HDMI-in enabled device. Provides video and audio output.

**4 USB 3.0 port**

Connect peripherals such as storage devices and printers. Provides data transfer speeds up to 5 Gbps.

**5 SD-card slot**

Reads from and writes to the SD card.

## Right



**1 Headset port**

Connect a headphone or a headset (headphone and microphone combo).

**2 USB 2.0 ports (2)**

Connect peripherals such as storage devices and printers. Provides data transfer speeds up to 480 Mbps.

**3 Optical drive**

Reads from and writes to CDs and DVDs.

**4 Security-cable slot**

Connect a security cable to prevent unauthorized movement of your computer.

# Base



**1 Left-click area**

Press to left-click.

**2 Touch pad**

Move your finger on the touch pad to move the mouse pointer. Tap to left-click and two finger tap to right-click.

**3 Right-click area**

Press to right-click.

**4 Power button**

Press to turn on the computer if it is turned off, in sleep state, or in hibernate state.

Press to put the computer in sleep state if it is turned on.

Press and hold for 4 seconds to force shut-down the computer.



**NOTE:** You can customize the power-button behavior in Power Options. For more information, see *Me and My Dell* at [www.dell.com/support/manuals](http://www.dell.com/support/manuals).

# Display



- 1 **Left microphone**  
Provides digital sound input for audio recording and voice calls.
- 2 **Camera**  
Enables you to video chat, capture photos, and record videos.
- 3 **Camera-status light**  
Turns on when the camera is in use.
- 4 **Right microphone**  
Provides digital sound input for audio recording and voice calls.

# Back



## 1 **Battery**

Supplies power to the computer. It enables the computer to work without connecting to an electrical outlet for a limited time.

## 2 **Regulatory label (in battery bay)**

Contains regulatory information about your computer.

## 3 **Service Tag label**

The Service Tag is a unique alphanumeric identifier that enables Dell service technicians to identify the hardware components in your computer and access warranty information.

## 4 **Battery-release latch**

Lock/unlock the battery in the battery bay. Slide the latch to release the battery.

# Specifications

---

## Dimensions and weight

Height	23.35 mm (0.92 in)
Width	345 mm (13.59 in)
Depth	243 mm (9.57 in)
Weight (maximum)	2.11 kg (4.65 lb)



**NOTE:** The weight of your computer varies depending on the configuration ordered and the manufacturing variability.

## System information

Computer model	Inspiron 14-5468
Processor	<ul style="list-style-type: none"><li>• Intel Celeron Dual Core</li><li>• 6th Generation Intel Core i3</li><li>• 7th Generation Intel Core i3/i5/i7</li></ul>
Chipset	Integrated in the processor

## Memory

Slots	Two SODIMM slots
Type	DDR4
Speed	Up to 2133 MHz
Configurations supported	4 GB, 6 GB, and 8 GB

# Ports and connectors

Network	One RJ-45 port
USB	<ul style="list-style-type: none"><li>• Two USB 2.0 ports</li><li>• One USB 3.0 port</li></ul>
Audio/Video	<ul style="list-style-type: none"><li>• One HDMI port</li><li>• One headset port (headphone and microphone combo)</li></ul>

# Communications

Ethernet	10/100 Mbps Ethernet controller integrated on system board
Wireless	<ul style="list-style-type: none"><li>• Wi-Fi 802.11 ac</li><li>• Wi-Fi 802.11b/g/n</li><li>• Bluetooth 4.0/4.1/4.2</li><li>• Wi-Fi Display Support (Wi-Fi Alliance)</li></ul>

# Audio

Controller	Realtek ALC3234 with Waves MaxxAudio
Speakers	Two
Speaker output	<ul style="list-style-type: none"><li>• Average – 2 W</li><li>• Peak – 2.2 W</li></ul>
Microphone	<ul style="list-style-type: none"><li>• Single microphone</li><li>• Digital-array microphones</li></ul>
Volume controls	Media-control shortcut keys

## Storage

Interface

SATA 6 Gbps

Hard drive

One 2.5-inch drive (supports Intel Smart Response Technology)

Optical drive

One 9.5 mm DVD+/-RW drive

## Media-card reader

Type

One SD-card slot

Cards supported

- SD card
- SD High Capacity (SDHC)
- SD Extended Capacity (SDXC)

## Keyboard

Type

Non-backlit keyboard

Shortcut keys

Some keys on your keyboard have two symbols on them. These keys can be used to type alternate characters or to perform secondary functions. To type the alternate character, press Shift and the desired key. To perform secondary functions, press Fn and the desired key.



**NOTE:** You can define the primary behavior of the function keys (F1–F12) by changing **Function Key Behavior** in BIOS setup program.

[Keyboard shortcuts](#)

## Camera

Resolution

- Still image: 0.92 megapixel

Diagonal viewing angle	<ul style="list-style-type: none"> <li>• Video: 1280 x 720 (HD) at 30 fps</li> </ul>
	74 degrees

## Touch pad

Resolution	<ul style="list-style-type: none"> <li>• Horizontal: 1223</li> <li>• Vertical: 745</li> </ul>
Dimensions	<ul style="list-style-type: none"> <li>• Height: 65 mm (2.56 in)</li> <li>• Width: 105 mm (4.13 in)</li> </ul>

## Power adapter

Type	45 W	65 W
Input current (maximum)	1.30 A	1.70 A
Output current (continuous)	2.31 A	3.34 A
Input voltage	100 VAC–240 VAC	
Input frequency	50 Hz–60 Hz	
Rated output voltage	19.50 VDC	
Temperature range: Operating	0°C to 40°C (32°F to 104°F)	
Temperature range: Storage	–40°C to 70°C (–40°F to 158°F)	

## Battery

Type	<ul style="list-style-type: none"> <li>• 4-cell “smart” lithium-ion (40 WHr)</li> </ul>
Operating time	Varies depending on operating conditions and can significantly



	reduce under certain power-intensive conditions.
Life span (approximate)	300 discharge/charge cycles
Temperature range: Operating	0°C to 35°C (32°F to 95°F)
Temperature range: Storage	–40°C to 65°C (–40°F to 149°F)
Coin-cell battery	CR-2032
Dimension:	
Width	270 mm (10.63 in)
Depth	37.50 mm (1.47 in)
Height	20 mm (0.78 in)
Weight (maximum)	0.25 kg (0.56 lb)
Voltage	14.8 VDC

## Display

Type	14-inch HD WLED
Resolution (maximum)	1366 X 768
Pixel pitch	0.2265 mm
Refresh rate	60 Hz
Operating angle	0 degree (closed) to 135 degrees
Controls	Brightness can be controlled using shortcut keys
Dimensions:	
Height (excluding bezel)	173.95 mm (6.85 in)
Width (excluding bezel)	309.40 mm (12.18 in)
Diagonal (excluding bezel)	354.95 mm (13.98)

## Video

	Integrated	Discrete
Controller	<ul style="list-style-type: none"> <li>Intel HD Graphics</li> </ul>	AMD Radeon R7 M440

	Integrated	Discrete
	<ul style="list-style-type: none"> <li>Intel HD Graphics 520</li> <li>Intel HD Graphics 620</li> </ul>	
Memory	Shared system memory	Up to 2 GB DDR3

# Computer environment

**Airborne contaminant level:** G1 as defined by ISA-S71.04-1985

	Operating	Storage
Temperature range	0°C to 35°C (32°F to 95°F)	–40°C to 65°C (–40°F to 149°F)
Relative humidity (maximum)	10% to 90% (non-condensing)	0% to 95% (non-condensing)
Vibration (maximum)*	0.66 GRMS	1.30 GRMS
Shock (maximum)	110 G <sup>†</sup>	160 G <sup>‡</sup>
Altitude (maximum)	–15.2 m to 3048 m (–50 ft to 10,000 ft)	–15.2 m to 10,668 m (–50 ft to 35,000 ft)

\* Measured using a random vibration spectrum that simulates user environment.


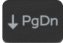

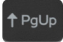
† Measured using a 2 ms half-sine pulse when the hard drive is in use.

‡ Measured using a 2 ms half-sine pulse when the hard-drive head is in parked position.

# Keyboard shortcuts

---

Keys	Description
	Mute audio
	Decrease volume
	Increase volume
	Play previous track/chapter
	Play/Pause
	Play next track/chapter
	Switch to external display
	Search
	Decrease brightness
	Increase brightness
	Turn off/on wireless
	Sleep
	Toggle between power and battery-status light/hard-drive activity light
	Toggle Fn-key lock
	End
	Home

Keys	Description
 + 	Page down
 + 	Page up

# Getting help and contacting Dell

---

## Self-help resources

You can get information and help on Dell products and services using these self-help resources:

Information about Dell products and services [www.dell.com](http://www.dell.com)

Windows 8.1 and Windows 10

Dell Help & Support app



Windows 10

Get started app



Windows 8.1

Help + Tips app



Accessing help in Windows 8, Windows 8.1, and Windows 10

In Windows search, type **Help and Support**, and press Enter.

Accessing help in Windows 7

Click **Start** → **Help and Support**.

Online help for operating system

[www.dell.com/support/windows](http://www.dell.com/support/windows)

[www.dell.com/support/linux](http://www.dell.com/support/linux)

[www.dell.com/support](http://www.dell.com/support)

Troubleshooting information, user manuals, setup instructions, product specifications, technical help blogs, drivers, software updates, and so on.

Learn about your operating system, setting up and using your computer, data backup, diagnostics, and so on.

See *Me and My Dell* at

[www.dell.com/support/manuals](http://www.dell.com/support/manuals).

# Contacting Dell

To contact Dell for sales, technical support, or customer service issues, see [www.dell.com/contactdell](http://www.dell.com/contactdell).



**NOTE:** Availability varies by country and product, and some services may not be available in your country.



**NOTE:** If you do not have an active internet connection, you can find contact information on your purchase invoice, packing slip, bill, or Dell product catalog.