

Philips Hue  
Dimmer switch



8718696752029

# Control your lights

anywhere in your house

Enrich your system with the Philips Hue dimmer switch and enjoy smooth wireless dimming. The switch works as a normal wall switch and dimmer. Place it anywhere you want, using screws or the adhesive tape on the back plate of the switch.

## Easy control

- Dim your Philips Hue lights
- Place it where it matters
- Use as a remote control
- No wires - battery powered
- Switch between scenes
- Requires a Philips Hue bridge

# PHILIPS

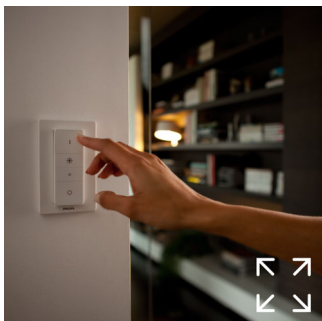
# Highlights

## Dim your Philips Hue lights



Using the Philips Hue dimmer switch, you can smoothly dim your favorite light setting up and down

## Place it anywhere



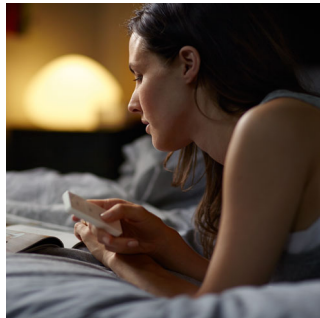
The Philips Hue dimmer switch works as a normal wall switch and dimmer. You can place it anywhere you want, using screws or the adhesive tape on the back plate of the switch

## Use as a remote control



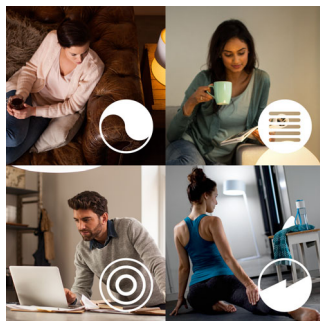
Pick up the remote and use it wherever you want for your comfort. The control unit of the switch is magnetic and can be removed from the base plate.

## No wires - battery powered



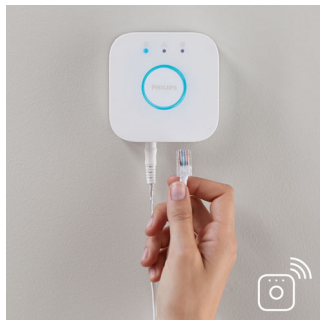
The Philips Hue dimmer switch is battery-powered, so there is no installation required

## Switch between scenes



When using your dimmer switch with Philips Hue white ambiance or Philips Hue white and color ambiance products, you can use the on-button to switch between 4 light recipes, or use the Philips Hue app to configure your favorite 4 scenes. It's all up to you

## Requires a Philips Hue bridge



This product requires a connection to the Philips Hue bridge

# Specifications

## The switch

- Batteries included: 1 x CR2450
- Frequency band: 2400 – 2483.5 MHz
- Lifetime: 50000 clicks
- Max. lights per switch: 10 if not linked to Hue bridge
- Minimal battery lifetime: 3 year(s)
- Minimal range indoor: 500 inch
- Software upgradeable: when connected to Hue bridge
- Switch depth: 11 mm
- Switch height: 92 mm
- Switch width: 35 mm
- Weight of switch: 37 g
- Wall plate depth: 14 mm
- Wall plate height: 115 mm
- Wall plate width: 70 mm
- Weight including wall plate: 67 g
- Zigbee Light link: protocol IEEE 802.15.4

## What's in the box

- Hue dimmer switch: 1

## Environmental

- Operational humidity: 5% < H < 95% (non condensing)
- Operational temperature: -10°C – 45°C

## Guarantee

- 2 years



Issue date 2018-03-20

Version: 2.0.1

12 NC: 9290 011 73762  
EAN: 87 18696 75202 9

© 2018 Philips Lighting Holding B.V.  
All Rights reserved.

Specifications are subject to change without notice.  
Trademarks are the property of Philips Lighting Holding B.V. or their respective owners.

[www.philips.com](http://www.philips.com)