

SIMPLE MANUAL

Wireless Sound Bar

Please read this manual carefully before operating your set
and retain it for future reference.

To view the instructions of advanced features,
visit <http://www.lg.com> and then download Owner's Manual.
Some of the content in this manual may differ from your unit.

MODEL
SH4D



www.lg.com

Copyright © 2017 LG Electronics Inc. All Rights Reserved.

ENGLISH

DEUTSCH

FRANÇAIS

NEDERLANDS

ITALIANO

ESPAÑOL

ΕΛΛΗΝΙΚΑ

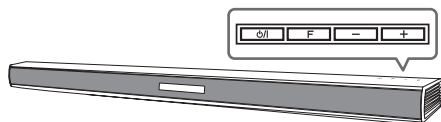
PORTUGUÊS

ČESKY



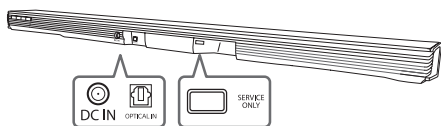
Front Panel

The buttons are located on the rear.



| | |
|--|------------------------|
| | Standby / On |
| | Selects Function |
| | Adjusts Volume |

Rear Panel



| | |
|--------------------|------------------------------------|
| DC IN | Connect to the AC adapter |
| OPTICAL IN | Connect to an Optical device |
| USB (Service only) | S/W download connector |

1

Subwoofer Connection

Place the wireless subwoofer near the speaker and follow steps below.

- 1 Connect the power cord of wireless subwoofer and sound bar to the outlet.
- 2 Turn on the main unit :
The sound bar and wireless subwoofer will be **automatically** connected. The subwoofer's green LED turns on.

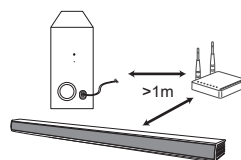
Subwoofer Connection Manually

If the subwoofer does not make sound, try to connect manually.

- 1 Press **Pairing** button on the rear of the wireless subwoofer.
 - The green LED on the rear of wireless subwoofer blinks quickly. (If the green LED does not blink, press and hold the **Pairing** button.)
- 2 Turn on the main unit.
- 3 Pairing is completed.
 - The green LED on the rear of wireless subwoofer turns on.



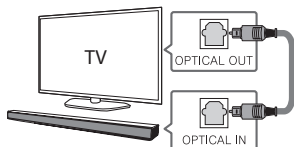
Keep the sound bar and the subwoofer away from the device (ex. wireless router, microwave oven, etc.) over 1 m to prevent wireless interference.



2

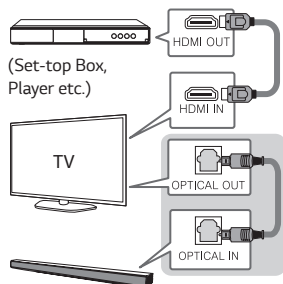
TV Connection

- 1 Connect the sound bar to the TV using Optical cable.
- 2 Set up [External Speaker (Optical)] on your TV setting menu.



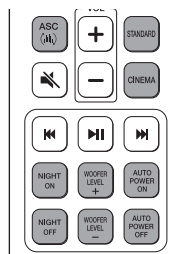
Additional Device Connection

- 1 Connect to the external device as follows.



- 2 Set the input source by pressing **F** on the remote control or unit repeatedly.

Remote control



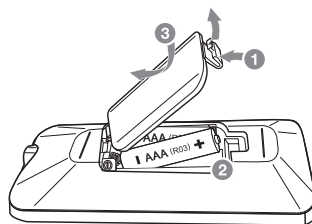
ASC/STANDARD/CINEMA: Selects the sound effect.

NIGHT ON/OFF: Turns down the volume at night.

WOOFER LEVEL +/-: Adjusts the volume level of subwoofer.


AUTO POWER ON/OFF: Automatically turns on by an input source.

Replacement of battery



Additional Information

Specification

| | |
|------------------------------------|--|
| Power consumption | Refer to the main label. Networked standby : 0.5 W (If all network ports are activated.) |
| AC adapter | <ul style="list-style-type: none">• Model : DA-38A25• Manufacturer : Asian Power Devices Inc.• Input : 100 - 240 V ~ 50 - 60 Hz 1.2 A• Output : 25 V  1.52 A |
| Dimensions (W x H x D) | Approx. 890 mm x 53 mm x 85 mm Without foot |
| Amplifier (Total RMS Output power) | 300 W RMS |

Design and specifications are subject to change without notice.

How to disconnect the wireless network connection or the wireless device

Set up the AUTO POWER ON/OFF function to off and turn off the unit.

Declaration of Conformity



Hereby, LG Electronics declares that the radio equipment type Wireless Sound Bar is in compliance with Directive 2014/53/EU. The full text of the EU declaration of conformity is available at the following internet address:

<http://www.lg.com/global/support/cedoc/cedoc#>

For consideration of the user, this device should be installed and operated with a minimum distance of 20 cm between the device and the body.

| Frequency range | Output power (Max.) |
|------------------|---------------------|
| 2402 to 2480 MHz | 10 dBm |
| 5730 to 5821 MHz | 13 dBm |