



Philips Steam&Go  
Handheld garment steamer

## Compact solution for easy de-wrinkling

Use vertically or horizontally for better results

Easier steaming with SmartFlow heated plate. Use vertically or horizontally on difficult-to-iron areas and to refresh clothing - no burns guaranteed. Lightweight & compact design makes it easy to use anytime anywhere. Just steam and go!



GC363/30

### Quick de-wrinkling

- Vertical & horizontal steaming for more convenience
- SmartFlow heated plate for better steaming results\*
- Automatic continuous steam for easy de-wrinkling
- Brush accessory for thicker fabrics

### Easy to use and safe

- Safe on all fabrics, no burns guaranteed
- No ironing board needed
- Compact design for convenient use, storage and travel
- Detachable water tank for easier filling
- 3m cord for longer reach
- Heat-resistant bag for easy storage

### Refreshes clothes without washing or dry cleaning

- Continuous steam removes odors and kills 99.9%\* of bacteria

# PHILIPS

# Highlights

## Continuous steam



An electric pump automatically provides continuous steam for easy and quick de-wrinkling.

## Brush accessory



The brush attachment opens the fabric fibers and enables better steam penetration. It is especially good for thicker garments like jackets and coats. It can also help remove dirt and pills.

## Safe on all fabrics



The steamer is safe to use on all fabrics and garments. The steam plate can be safely pressed against any clothing with no risk of

burning – a great solution for delicate fabrics, like silk.

## No ironing board needed



Using a clothes steamer on hanging garments eliminates the need for an ironing board, so de-wrinkling is easy and hassle-free.

## Ergonomic design



The handheld garment steamer is ergonomically designed to be light, compact and comfortable to use. Just press the trigger and watch wrinkles and creases disappear.

## Detachable water tank



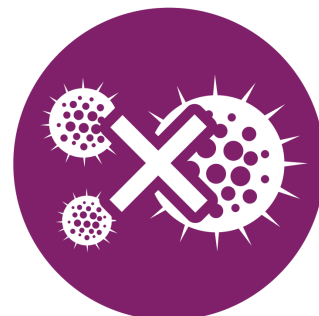
The water tank detaches for easy filling under the tap.

## Exclusive storage bag



Use the supplied storage bag to store the handheld steamer after usage or to take along with you during traveling.

## 99.9% bacteria-free\*



Hot steam refreshes your clothes and kills up to 99.9% of bacteria\*. Less frequent washing and dry cleaning saves time and money, and helps clothes last longer.

## SmartFlow heated plate



Thanks to SmartFlow technology, the steam plate is heated up to an optimal temperature, safe for all fabrics, and prevents wet spots. The heated steam plate helps to press the fabric while steaming horizontally and provides even better steaming results\*.

# Specifications

## Fast crease removal

- Continuous steam: Up to 24 g/min
- Power: 1300 W
- Ready to use: <1 min
- Voltage: 220-240 V

## Easy to use

- Safe on all fabrics: Even delicates like silk
- Water tank capacity: 70 ml
- Detachable water tank
- Power cord length: 3 m
- Ready to use: Light indicator
- Refill any time during use

## Storage

- Storage solution: Storage bag

## Accessories included

- Brush
- Glove for extra protection

## Size and weight

- Packaging dimensions (WxHxL): 38 x 12.8 x 15 cm

## Guarantee

- 2 year worldwide guarantee

## Green efficiency

- Product packaging: 100% recycable
- User manual: 100% recycled paper



Issue date 2017-11-21

Version: 3.0.1

© 2017 Koninklijke Philips N.V.  
All Rights reserved.

Specifications are subject to change without notice.  
Trademarks are the property of Koninklijke Philips N.V.  
or their respective owners.

[www.philips.com](http://www.philips.com)

\* \* Compared to Philips Steam&Go GC310 and GC320; without SmartFlow heated plate.

\* \* Tested by external body for bacteria types Escherichia coli 8099, Staphylococcus aureus ATCC 6538, Candida albicans ATCC 10231 with 8 minutes steaming time.