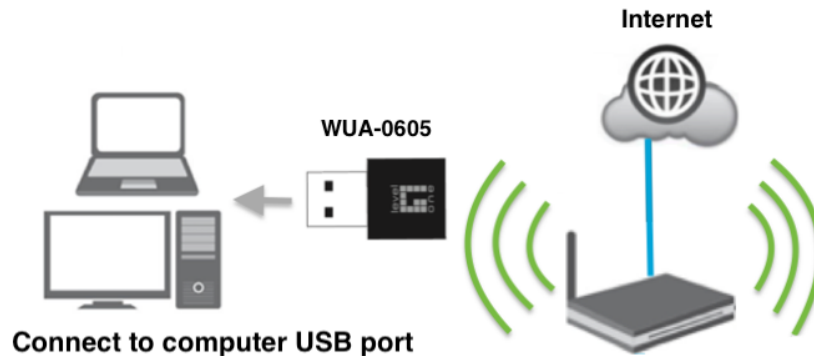


Quick Installation Guide



NOTE: This Quick Installation Guide only describes the most basic situations and settings, All detailed information is described in the user manual.

English

1. In order to install, insert the Configuration Utility CD-ROM into the computer's CD-ROM drive. The program shall run automatically. Alternatively this can also be done manually by double clicking the **autorun.exe** file on the CD.
2. Please click "**Utility**" button to continue. (Figure 1)
3. Click "**Next**" button to continue. (Figure 2)
4. Click "**Finish**" button to exit. (Figure 3)

Deutsch

1. Im Fall der Installation, legen Sie die Konfigurations-CD-ROM in das CD-ROM Laufwerk des PC ein. Das Programm sollte automatisch starten. Alternativ kann ein manueller Start per Doppelklick auf die **autorun.exe** Datei der CD erfolgen.
2. Drücken Sie "**Utility**" um fortzufahren. (Figure 1)
3. Drücken Sie "**Next**" um fortzufahren. (Figure 2)
4. Drücken Sie "**Finish**" um das Programm zu beenden. (Figure 3)

Français

1. Insérez le CD-ROM de l'Utilitaire de configuration dans le lecteur de CD-ROM de votre ordinateur pour installer. Le programme démarrera automatiquement. Si ce n'est pas le cas, vous pouvez le lancer manuellement en double-cliquant sur le fichier **autorun.exe** sur le CD.
2. Veuillez cliquer sur le bouton "**Utility**" pour continuer. (figure 1)
3. Cliquez sur le bouton "**Next**" pour continuer. (figure 2)
4. Cliquez sur le bouton "**Finish**" pour quitter. (figure 3)

Español

1. Para instalar, inserte el CD-ROM que contiene el programa para instalar el utilitario. El programa se ejecutará de forma automática. Alternativamente, también puede hacerse manualmente haciendo doble clic en el archivo **autorun.exe** del CD.
2. Haga clic en el botón "**Utility**" para continuar. (Figure 1)
3. Haga clic en el botón "**Next**" para continuar. (Figure 2)
4. Haga clic en el botón "**Finish**" para terminar. (Figure 3)

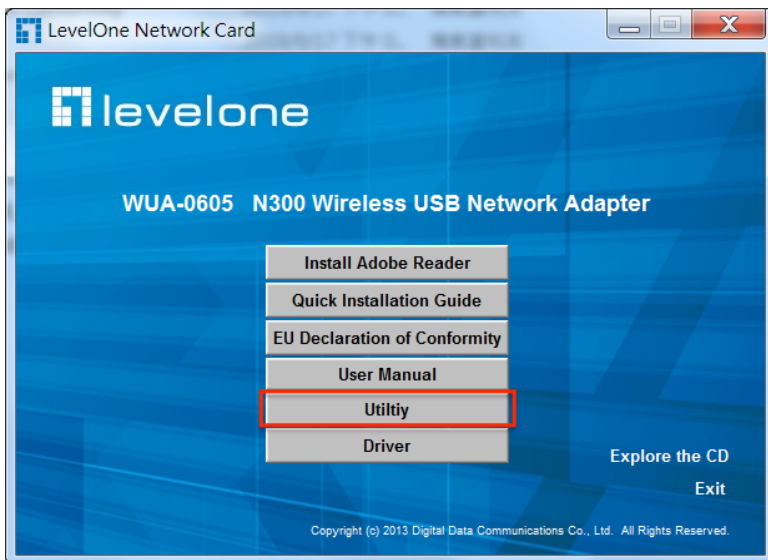
Italiano

1. Per procedure all'installazione, inserire il CD-ROM nel lettore del computer. Il programma si avvierà automaticamente. In caso di mancato avvio automatico sarà possibile avviarlo cliccando sul file "autorun.exe" presente nel CD.
2. Cliccare sul pulsante "**Utility**" per continuare. (Figure 1)
3. Cliccare "**Next**" per continuare. (Figure 2)
4. Cliccare "**Finish**" per uscire. (Figure 3)

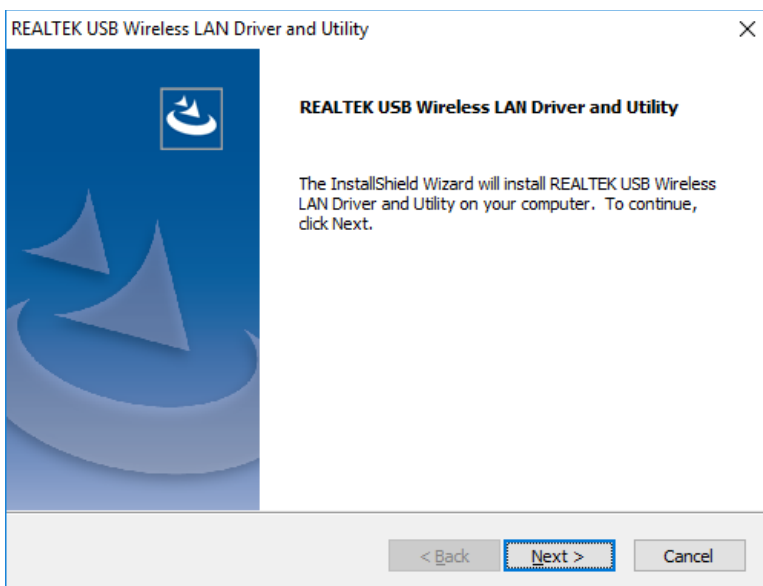
Português

1. Para instalar, insira o CD de configuração no drive de CD do computador. O programa deve iniciar automaticamente. Se não iniciar, você pode clicar duas vezes no arquivo **autorun.exe** de CD.
2. clique no botão "**Utility**" para continuar. (Figure 1)
3. Clique no botão "**Next**" para continuar (Figure 2)
4. Clique no botão "**Finish**" para sair. (Figure 3)

(Figure 1)



(Figure 2)



(Figure3)

