

USB2DVIMM6

Instruction Manual

USB to DVI Video Adapter

**6ft. USB 2.0 to DVI External Multi
Monitor Video Adapter Cable -
Male/Male**

StarTech.com 
Making hard-to-find easy!®

***Please ensure that the driver
installation is complete prior to
the physical installation of the
USB 2.0 to DVI adapter**

FCC Compliance Statement

This equipment has been tested and found to comply with the limits for a Class B digital device, pursuant to part 15 of the FCC Rules. These limits are designed to provide reasonable protection against harmful interference in a residential installation. This equipment generates, uses and can radiate radio frequency energy and, if not installed and used in accordance with the instructions, may cause harmful interference to radio communications. However, there is no guarantee that interference will not occur in a particular installation. If this equipment does cause harmful interference to radio or television reception, which can be determined by turning the equipment off and on, the user is encouraged to try to correct the interference by one or more of the following measures:

- Reorient or relocate the receiving antenna.
- Increase the separation between the equipment and receiver.
- Connect the equipment into an outlet on a circuit different from that to which the receiver is connected.
- Consult the dealer or an experienced radio/TV technician for help.

Use of Trademarks, Registered Trademarks, and other Protected Names and Symbols

This manual may make reference to trademarks, registered trademarks, and other protected names and/or symbols of third-party companies not related in any way to StarTech.com. Where they occur these references are for illustrative purposes only and do not represent an endorsement of a product or service by StarTech.com, or an endorsement of the product(s) to which this manual applies by the third-party company in question. Regardless of any direct acknowledgement elsewhere in the body of this document, StarTech.com hereby acknowledges that all trademarks, registered trademarks, service marks, and other protected names and/or symbols contained in this manual and related documents are the property of their respective holders.

Table of Contents

Introduction	1
Packaging Contents.....	1
System Requirements	1
Installation	1
Windows 2000/XP/Vista	1
Mac OS X	3
Configuration	4
Windows 2000/XP/Vista	4
Mac OS X	6
Specifications	9
Supported Resolutions	9
Technical Support	10
Warranty Information	10

Introduction

Packaging Contents

- 1 x USB2DVIMM6 video adapter
- 1 x Driver CD
- 1 x User Manual

System Requirements

- Processor: 1.2GHz or higher clock speed
- RAM: 512MB or higher
- 30MB of available disk space
- An available USB 2.0 port
- DVI capable monitor
- CD/DVD-ROM drive (driver installation)
- Microsoft Windows® 2000/XP(32-bit)/Vista(32/64-bit) or Mac OS® 10.4/10.5

Installation

- * **Please ensure that the driver installation is complete prior to the physical installation of the USB 2.0 to DVI adapter**

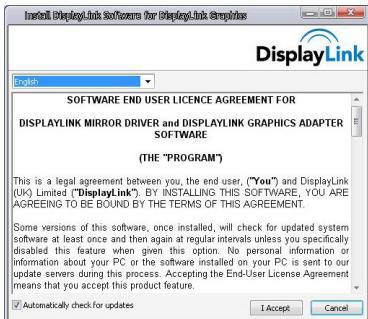
Windows 2000/XP/Vista

1. Insert the Driver CD (included) into the CD/DVD-ROM drive.
2. Browse through the Driver CD and locate the “DisplayLink.exe” file. Double-click on the “DisplayLink.exe” file to begin the installation process:

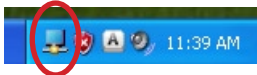


DisplayLink.exe

3. When the End User License Agreement appears, please read and accept it to proceed with the installation.



4. Please wait while the installation package copies the necessary files.
5. Once the installation is complete, click the Restart button. The computer will automatically reboot, so please make sure to close/save any files/programs you have opened before pressing the button.
6. After Windows has loaded, plug in the USB2DVIMM6 adapter to the computer. Windows should start to automatically load the drivers. Once complete, you should see this icon in your System Tray:



7. To verify the installation, right-click on "My Computer" and select Manage to open the Computer Management window. In the left pane of the Computer Management window, click on Device Manager. In the right pane of the Computer Management window, click on Universal Serial Bus Controllers, and ensure that the USB2DVIMM6 is listed underneath.



8. If you wish to add additional USB2DVIMM6 adapters, simply plug them into available USB 2.0 ports. A maximum total of 5 USB2DVIMM6 video adapters can be used on a computer.

Mac OS X (For Intel-based Mac computers only)

1. Insert the Driver CD (included) into the CD/DVD-ROM drive.
2. Browse through the Driver CD and locate the “DisplayLink-OSX” .dmg file. Double-click on this file to begin the installation process:

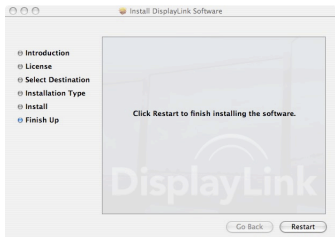


DisplayLink-OSX.dmg

3. Double Click the “DisplayLink Software Installer.pkg” to install the software.



4. Once the installation is complete, click the “Restart” button. The computer will automatically reboot, so make sure to close/save any files you have opened, before pressing this button.

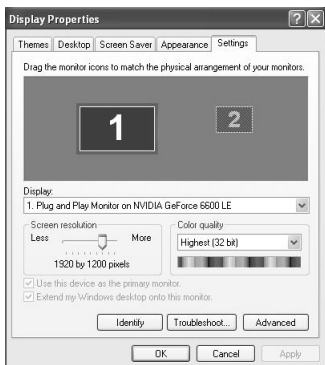


5. After the computer has restarted, plug in the USB2DVIMM6 adapter to an available USB 2.0 port. The adapter should now be ready to use.
6. If you wish to add additional USB2DVIMM6 adapters, simply plug them into available USB 2.0 ports. A maximum total of 4 USB2DVIMM6 video adapters can be used on a computer.

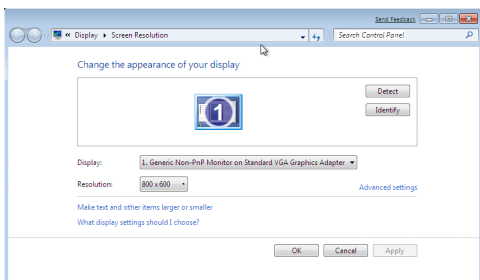
Configuration

Windows 2000/XP/Vista

To configure the image being displayed by the monitor that is connected to USB2DVIMM6, right-click on a blank section of the desktop, select **Properties**, then click on the **Settings** tab to display the following screen:



For Vista, right-click on a blank section of the desktop and select **Personalize**, then select **Screen Resolution** on the next screen.



Configure the secondary display by selecting it from the dropdown menu, then adjusting the desired settings:

Using the Second Display in Extended Mode

In Extended Mode, the monitor that is connected to USB2DVIMM6 creates an extension of the Windows Desktop displayed on the primary monitor. To set the display to function in this mode (once selected from the dropdown menu), check the box marked *Extend my windows desktop onto this monitor*, then arrange its position (virtually) with respect to the primary monitor by dragging the monitor icons (shown above as *Primary/Secondary orientation*) to reflect the physical orientation of the displays.

Using the Second Display in Clone Mode (default)

In Clone Mode, the monitor that is connected to USB2DVIMM6 simply mirrors the image displayed on the primary monitor. To set the display to function in this mode (once selected from the dropdown menu), uncheck the box marked *Extend my windows desktop onto this monitor*.

Designating the Primary Display

To select which of the connected monitors will act as the primary display, select the monitor that will be used as the Primary Display from the Dropdown menu (referenced on page 4), and place a checkmark next to *Use this device as the primary monitor*. On some displays it is necessary to disable the main display (i.e. uncheck the box marked *Extend my Windows display onto this monitor for the main display*).

Following this change, the monitor connected to USB2DVIMM6 will remain set as the primary display even if the computer enters hibernate mode or operation is suspended or powered down. If the monitor is disconnected from USB2DVIMM6, or USB2DVIMM6 is removed from the host computer, the original monitor will revert to being the primary display.

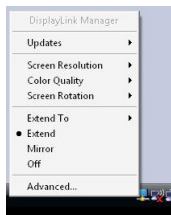
Alternate Configuration

Following the software installation for USB2DVIMM6, you may have noticed an icon in the taskbar as illustrated below. Clicking on this icon will open a menu that offers configuration of the display (connected to USB2DVIMM6):

Here, you can set the secondary display to act as an extension of the primary desktop, or as a mirror image that duplicates the contents on the primary display.

Similarly, the screen resolution, color quality, position of the screen and rotation of the screen can be adjusted from this menu.

To disable the secondary display, select Off.

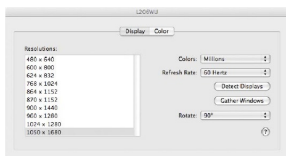
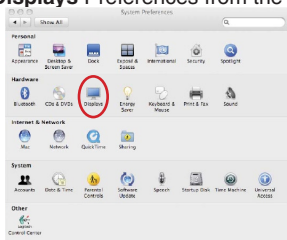


Media Playback

Please note that while operating in Extended Mode, USB2DVIMM6 can display media files and DVDs using a broad variety of media players, however in Clone Mode, limited support is available for video playback.

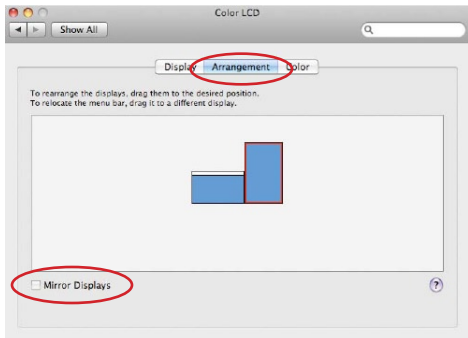
Mac OS X

To configure the display settings and monitor positions, bring up the **Displays Preferences** from the **System Preferences** menu:



The Display settings for each display will appear on the individual monitors themselves. To configure them all from a single location, press the “Gather Windows” button and each screen’s Displays Preferences windows will appear on that display.

All supported video resolutions will appear in the list on the left side. To change the positioning of each display, click on the “Arrangement” button (found only on the primary display) and you can then virtually reposition each display.



Using the Adapter in Extended or Mirror Mode

By default the USB2DVIMM6 will be setup as an extended display. To change the display as a mirrored/cloned display, check the “Mirror Display” box on the “Arrangement” page for that monitors Displays settings window. To return the monitor to an extended display, uncheck this option.

To use both extended and mirrored displays simultaneously, turn off mirroring then in the “Arrangement” page press and hold the ‘cmd’ and ‘alt’ keys and drag and drop the display you wish to mirror over the primary display (shown with the white bar).

Repeat this with each display you wish to mirror, all others will act as an extended display.

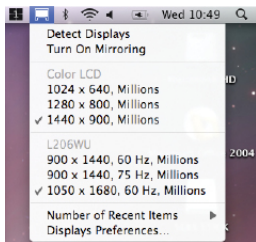
Changing the Primary Display

You can change which display is the primary display by moving the Menu Bar between displays. Changing the primary display affects where new windows appear and the position of the Dock.

To move the Menu Bar, click the white menu bar and drag it to the display you wish to become the primary.

Configuring Displays from the Menu Bar

If you have checked the “Show displays in menu bar” in the Display Preferences window, then you can configure displays by clicking the display icon in the menu bar. This will show a menu similar to the following:



Media Playback

Please note that while operating in Extended Mode, USB2DVIMM6 can display media files and DVDs using a broad variety of media players, however in Clone Mode, limited support is available for video playback.

Specifications

Bus Interface	USB 2.0
Connectors	1x USB type A 1 x DVI-D male
Video Signal	DVI-D (digital only)
Cable Length	6ft.
Built in Memory	16MB
Maximum Number of Adapters	5 (Windows) 4 (Mac OS X)
Compatible Operating Systems	Windows 2000/XP(32-bit)/ Vista(32/64-bit), Mac OS 10.4/10.5

Supported Resolutions

Resolution	Colour Depth
640x480	16, 32
800x600	16, 32
1024x768	16, 32
1280x1024	16, 32
1366x768	16, 32
1440x900	16, 32
1600x1200	16, 32
1680x1050	16, 32

Technical Support

StarTech.com's lifetime technical support is an integral part of our commitment to provide industry-leading solutions. If you ever need help with your product, visit www.startech.com/support and access our comprehensive selection of online tools, documentation, and downloads.

Warranty Information

This product is backed by a one year warranty.

In addition, StarTech.com warrants its products against defects in materials and workmanship for the periods noted, following the initial date of purchase. During this period, the products may be returned for repair, or replacement with equivalent products at our discretion. The warranty covers parts and labor costs only. StarTech.com does not warrant its products from defects or damages arising from misuse, abuse, alteration, or normal wear and tear.

Limitation of Liability

In no event shall the liability of StarTech.com Ltd. and StarTech.com USA LLP (or their officers, directors, employees or agents) for any damages (whether direct or indirect, special, punitive, incidental, consequential, or otherwise), loss of profits, loss of business, or any pecuniary loss, arising out of or related to the use of the product exceed the actual price paid for the product. Some states do not allow the exclusion or limitation of incidental or consequential damages. If such laws apply, the limitations or exclusions contained in this statement may not apply to you.



StarTech.com has been making “hard-to-find easy” since 1985, providing high quality solutions to a diverse IT and A/V customer base that spans many channels, including government, education and industrial facilities to name just a few. We offer an unmatched selection of computer parts, cables, A/V products, KVM and Server Management solutions, serving a worldwide market through our locations in the United States, Canada, the United Kingdom and Taiwan.

Visit **www.startech.com** today for complete information about all our products and to access exclusive interactive tools such as the Cable Finder, Parts Finder and the KVM Reference Guide.