

Businesses increasingly require high productivity and lower operating costs from their printers.

Fast, professional-quality printers with lower operating costs.

Most businesses are increasingly demanding high productivity and lower operating costs from their printers. Ease of use and printing versatility for a wide range of documents and presentations are also needed.

The ProXpress M4070 | 3870 | 3370 series multifunction printers are ideal for every business environment, with a full range of features designed to increase productivity and efficiency:

High-Speed Performance With Professional Results

ProXpress M4070 | 3870 | 3370 series MFPs have high print speeds of up to 42 ppm¹ (pages per minute) with 256 MB memory for letter size documents. Samsung's Rendering Engine for Clean Page (ReCP) technology produces sharp text and clear images on a range of media sizes and weights.

Cost Efficiency

Eco features such as the One Touch Eco Button and Easy Eco Driver plus job accounting help reduce paper, toner and energy consumption. A wide range of toner cartridges² supporting different printing volumes aids in lowering the total cost of ownership (TCO).

Samsung high-performing MFPs deliver improved print quality and speed.

Print with exceptional speed and superior quality.

The Samsung ProXpress M4070 | 3870 | 3370 series helps businesses print complex documents on heavier media types without sacrificing processing and printing speed and professional-quality results.

High-Speed Printing and Image Processing

The robust ProXpress M4070 | 3870 | 3370 series MFPs feature print speeds of up to 42 ppm¹, powered by a Cortex™-A5 core processor and up to 256 MB of memory. High speed and performance enable businesses to accelerate document and image processing for increased efficiency.



Versatility

4-in-1 multifunctional features, and built-in duplex, and convenient mobile printing capabilities come standard. The printers feature enterprise-level security, which offers greater control of user, document and network access. The M3870FW also features wireless connectivity and Wi-Fi Direct for ultimate ease of sharing.

Ease of Use

Easy Printer Manager ensures smooth printer operation, Easy Document Creator helps users create, compile and share documents, and the built-in numeric keypad enables easy and secure printing.

Higher-Quality Print Output

ReCP technology improves the readability of printed documents by enhancing thin lines and sharpening the edges of negative text. Small text that typically may not scan completely is sharpened through edge resolution enhancement. The ProXpress M4070 | 3870 | 3370 series MFPs deliver sharp, solid prints and scans with effective output print resolutions of up to 1,200 x 1,200 dpi.



Additional Printing Choices for Professional Documents

The printers' multipurpose tray supports media of up to 58 lb. stock in weight, which offers more printing choices for professional documents. Numerous labels, cards and envelopes can be printed with ease using the multipurpose tray.³

Specifications	M3370FD	M3870FW	M4070FR
Print			
Engine Speed	Up to 35 ppm in Letter	Up to 40 ppm in Letter	Up to 42 ppm in Letter
Resolution	Up to 1,200 x 1,200 dpi	Up to 1,200 x 1,200 dpi	Up to 1,200 x 1,200 dpi
FPOT (From Ready)	< 6.5 seconds	< 6.5 seconds	< 6.5 seconds
Duplex	Automatic	Automatic	Automatic
Emulation	SPL, PCL5e/6, PS3, IBM ProPrinter, EPSON (ESC/P), PDF v1.7	SPL, PCL5e/6, PS3, IBM ProPrinter, EPSON (ESC/P), PDF v1.7	SPL, PCL5e/6, PS3, IBM ProPrinter, EPSON (ESC/P), PDF v1.7
Copy			
Copy Speed	Up to 35 cpm in letter	Up to 40 cpm in letter	Up to 42 cpm in letter
Resolution	Up to 600 x 600 dpi	Up to 600 x 600 dpi	Up to 600 x 600 dpi
First Copy Out Time	Less than 10 Seconds Flatbed, Less than 13 Seconds ADF	Less than 10 Seconds Flatbed, Less than 13 Seconds ADF	Less than 10 Seconds Flatbed, Less than 13 Seconds ADF
Multi Copy	1~99	1~99	1~99
Duplex Copy	No	Yes	Yes
Copy Features	ID Copy, N-Up, Book Copy, Erase Edge, Watermark Copy, Page Numbering, Time & Date Stamping, ID Stamp, Erase Background	ID Copy, N-Up, Book Copy, Erase Edge, Watermark Copy, Page Numbering, Time & Date Stamping, ID Stamp, Erase Background	ID Copy, N-Up, Book Copy, Erase Edge, Watermark Copy, Page Numbering, Time & Date Stamping, ID Stamp, Erase Background
Fax			
Compatibility	ITU-T G3, ECM	ITU-T G3, ECM	ITU-T G3, ECM
Communication System	PSTN / PABX	PSTN / PABX	PSTN / PABX
Modem Speed	33.6 Kbps	33.6 Kbps	33.6 Kbps
Color Fax	Yes	Yes	Yes
Resolution	Standard: 203 x 98 dpi, Fine: 203 x 196 dpi, Superfine: 300 x 300 dpi, Color: Up to 200 x 200 dpi	Standard: 203 x 98 dpi, Fine: 203 x 196 dpi, Superfine: 300 x 300 dpi, Color: Up to 200 x 200 dpi	Standard: 203 x 98 dpi, Fine: 203 x 196 dpi, Superfine: 300 x 300 dpi, Color: Up to 200 x 200 dpi
Fax Memory	6 MB (500 pages)	6 MB (500 pages)	6 MB (500 pages)
Fax Features	Fax to PC/Email/SMB/FTP, Speed Dial, Auto Redial, On Hook Dial, Last Number Redial, Delayed Fax, Fax Forward to Fax/PC, Junk Fax Barrier, Auto Reduction, Secure Receive, Confirmation Report	Fax to PC/Email/SMB/FTP, Speed Dial, Auto Redial, On Hook Dial, Last Number Redial, Delayed Fax, Fax Forward to Fax/PC, Junk Fax Barrier, Auto Reduction, Secure Receive, Confirmation Report	Fax to PC/Email/SMB/FTP, Speed Dial, Auto Redial, On Hook Dial, Last Number Redial, Delayed Fax, Fax Forward to Fax/PC, Junk Fax Barrier, Auto Reduction, Secure Receive, Confirmation Report
Scan			
Scan Compatibility	TWAIN, WIA, ICDM, SANE (Linux)	TWAIN, WIA, ICDM, SANE (Linux)	TWAIN, WIA, ICDM, SANE (Linux)
Scan Method	Color CIS	Color CIS	Color CIS
Scan Speed	Up to 20 ipm	Up to 24 ipm	Up to 24 ipm
Resolution	Optical Enhanced Up to 1,200 x 1,200 dpi Up to 4,800 x 4,800 dpi	Up to 1,200 x 1,200 dpi Up to 4,800 x 4,800 dpi	Up to 1,200 x 1,200 dpi Up to 4,800 x 4,800 dpi
Duplex Scan	No	Yes	Yes
Scan Depth	Mono: 8 bit, Color: 48 bit	Mono: 8 bit, Color: 48 bit	Mono: 8 bit, Color: 48 bit
Scan To	Email, SMB, FTP, PC, WSD	USB, Email, SMB, FTP, PC, WSD	USB, Email, SMB, FTP, PC, WSD
Paper Handling			
Input Capacity	250-sheet Cassette, 1-sheet Manual Bypass (771 sheets max)	250-sheet Cassette, 50-sheet Multipurpose Bypass Tray (820 sheets max)	250-sheet Cassette, 50-sheet Multipurpose Bypass Tray (820 sheets max)
Output Capacity	150 sheets face down	150 sheets face down	150 sheets face down
Media Size	3" x 5" ~ 8.5" x 14"	3" x 5" ~ 8.5" x 14"	3" x 5" ~ 8.5" x 14"
Media Types	Plain, Thick, Thin, Bond, Pre-printed, Recycled, Envelope, Transparency, Label, Cardstock, Cotton, Colored, Archive	Plain, Thick, Thin, Bond, Pre-printed, Recycled, Envelope, Transparency, Label, Cardstock, Cotton, Colored, Archive	Plain, Thick, Thin, Bond, Pre-printed, Recycled, Envelope, Transparency, Label, Cardstock, Cotton, Colored, Archive
Media Weight	16~58 lb.	16~58 lb.	16~58 lb.
ADF Capacity	50 Sheets	50 Sheets	50 Sheets
ADF Type	ADF	DADF	DADF
ADF Document Size	5.6" x 5.8" ~ 8.5" x 14"	5.6" x 5.8" ~ 8.5" x 14"	5.6" x 5.8" ~ 8.5" x 14"
ADF Document Weights	16~28 lb.	16~28 lb.	16~28 lb.
General			
Processor	600 MHz	600 MHz	600 MHz
Memory	256 MB (Max 512 MB)	256 MB (Max 512 MB)	256 MB (Max 512 MB)
OS Compatibility	Windows (32/64 bit) XP/2003/Vista/2008/7/2008 R2, Mac OS X 10.5~10.8, Various Linux, Various Unix, Citrix Presentation Server, Windows Terminal Services	Windows (32/64 bit) XP/2003/Vista/2008/7/2008 R2, Mac OS X 10.5~10.8, Various Linux, Various Unix, Citrix Presentation Server, Windows Terminal Services	Windows (32/64 bit) XP/2003/Vista/2008/7/2008 R2, Mac OS X 10.5~10.8, Various Linux, Various Unix, Citrix Presentation Server, Windows Terminal Services
Interface	Hi-Speed USB 2.0, Ethernet 10/100 Base TX	Hi-Speed USB 2.0, Ethernet 10/100 Base TX, Wireless 802.11b/g/n, Wi-Fi Direct, Direct USB	Hi-Speed USB 2.0, Gigabit Ethernet, Direct USB
User Interface	4-line LCD, 11 Status LEDs, Numeric Keypad, Function Keys, Soft Power	4-line LCD, 11 Status LEDs, Numeric Keypad, Function Keys, Soft Power	4-line LCD, 11 Status LEDs, Numeric Keypad, Function Keys, Soft Power
Monthly Duty Cycle	50,000 pages per month	80,000 pages per month	100,000 pages per month
Noise Level	<55 dBA while Printing	<57 dBA while Printing	<57 dBA while Printing
Power Consumption	700W Printing, 10W Ready, 1.1W Power Save, 1.7 kWh TEC	700W Printing, 10W Ready, 1.6W Power Save, 2.1 kWh TEC	700W Printing, 10W Ready, 1.1W Power Save, 2.0 kWh TEC
Unit Dimension (W x D x H)	16.3" x 16.6" x 17.7"	18.5" x 17.5" x 19.0"	18.5" x 17.5" x 19.0"
Box Dimensions (W x D x H)	21.2" x 21.0" x 24.6"	23.3" x 21.5" x 26.0"	23.3" x 21.5" x 26.0"
Unit Weight	33.4 lbs.	37.6 lbs.	37.6 lbs.
Box Weight	40.4 lbs.	45.2 lbs.	45.2 lbs.
Consumables			
Toner System	All-in-One Integrated Cartridge System	All-in-One Integrated Cartridge System	All-in-One Integrated Cartridge System
Toner	Starter Toner Full Standard Toner 3,000 Page Yield	Full Standard Toner 3,000 Page Yield	Full Standard Toner 3,000 Page Yield
	Toner Models and Yields Standard 3,000 Page Yield (MLT-D203S) High Yield 5,000 Page Yield (MLT-D203L) Extra High Yield 10,000 Page Yield (MLT-D203E)	Standard 3,000 Page Yield (MLT-D203S) High Yield 5,000 Page Yield (MLT-D203L) Extra High Yield 10,000 Page Yield (MLT-D203E)	Standard 3,000 Page Yield (MLT-D203S) High Yield 5,000 Page Yield (MLT-D203L) Extra High Yield 10,000 Page Yield (MLT-D203E) Ultra High Yield 15,000 Page Yield (MLT-D203U)
	Toner Metrics Declared Cartridge Yield in Accordance with ISO/IEC 19752	Declared Cartridge Yield in Accordance with ISO/IEC 19752	Declared Cartridge Yield in Accordance with ISO/IEC 19752
Accessories			
Included	Power Cord, Fax Line Cable, Full Standard Yield Toner, Driver/Software CD with Digital User Manual, Warranty Card, Quick Installation Guide	Power Cord, Fax Line Cable, Full Standard Yield Toner, Driver/Software CD with Digital User Manual, Warranty Card, Quick Installation Guide, Hi-Speed USB 2.0 Cable	Power Cord, Fax Line Cable, Full Standard Yield Toner, Driver/Software CD with Digital User Manual, Warranty Card, Quick Installation Guide

Follow us: <https://twitter.com/HPBizNow>
Product Support: <http://www.hp.com/go/Samsung>



© Copyright 2018 HP Development Company, L.P. The information contained herein is subject to change without notice. The only warranties for HP products and services are set forth in the express warranty statements accompanying such products and services. Nothing shall be construed as constituting an additional warranty. HP shall not be liable for technical or editorial errors or omissions contained herein. All other trademarks are property of their respective owners.



Samsung Laser Multifunction ProXpress M4070 | 3870 | 3370 Series

Control costs by reducing toner and paper expenses.

Reduce operating expenses with economical features and solutions.



One Touch Eco Button

Businesses can lower toner and paper usage with the one-touch Eco Button. Eco Mode automatically adjusts the print job and enables 2-up printing (two pages on the same side) and duplex printing (printing on both sides). Skipping blank pages and toner save mode are also enabled. These settings are easily adjusted from within the driver, and an administrator can modify and even choose to enforce Eco Mode for all users, saving their organization on costs.

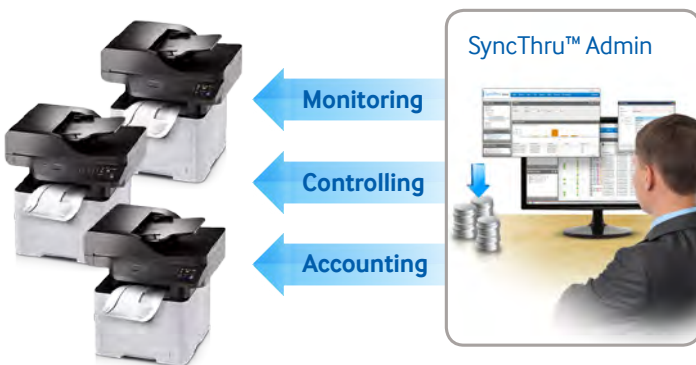


Easy Eco Driver

The Easy Eco Driver, granted the 2012 Outstanding Achievement in Innovation award from Buyers Laboratory (BLI), can reduce toner use by up to 20%. Users have the option of removing images, converting them from bitmap to sketch, and removing bold text in order to save on toner costs.



Samsung Eco-Driver earned the 2012 "Outstanding Achievement in Innovation" Award from Buyers Lab



Central Print Usage Control to Save More Resources

Central print usage control, activated through the SyncThru™ Admin job accounting feature, enables managers to assign users to specific printers. Users can also be assigned quotas for the number of pages or copies they can make per printer.



More Toner Options, More Choices for Cost Reduction

The ProXpress M4070 | 3870 | 3370 series offers diverse laser toner cartridge options*, from standard-yield laser toner cartridges that typically yield 3,000 standard pages, to ultra-high yield laser toner cartridges that can yield 15,000 standard pages, which lowers the cost per page and reduces your expenses.

An integrated toner system contains the imaging unit and toner cartridge in one convenient package. This integrated toner system is the preferred choice for businesses with heavier printing volumes.

Take advantage of flexible printing options that help optimize output.

Improve productivity with versatile features from multifunction to security.



4-in-1 Multifunction and Built-in Duplex Printing

4-in-1 multifunctional (print, copy, scan, fax) capabilities and built-in duplex printing provide the versatility and convenience that businesses need to stay competitive. Furthermore, the M4070FR and M3870FW have a DADF (duplex automatic document feeder) standard, allowing users to copy, scan and fax two-sided documents, which further improves office efficiency.



Convenient Mobile Printing Optimized for Various Business Environments

The free Samsung Mobile Print app allows users to print, scan and fax directly from their mobile devices. By simply downloading the Mobile Print app from the Google® Play store for Android™ or the App Store for iOS®, users can access their devices without the need for additional drivers or complicated setup.

The app will detect any compatible Samsung printer or MFP located on the same Wi-Fi network, giving users access to the full range of the machine's functions. The ProXpress M4070 | 3870 | 3370 series can handle almost any type of file, including Microsoft Office documents, images and web pages.

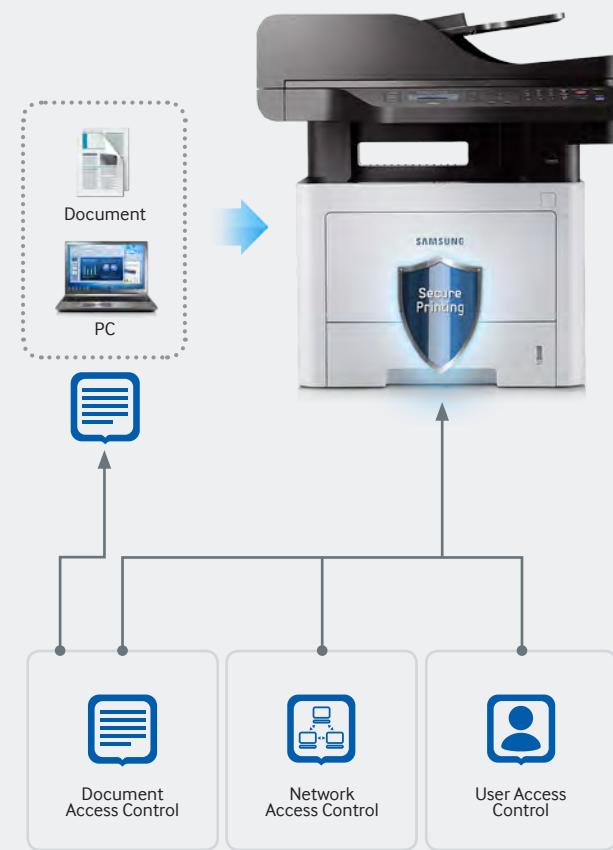
Google® Cloud Print Ready

With the ProXpress M4070 | 3870 | 3370 series and Google Cloud Print, you can print from virtually anywhere, right out of the box. Google Cloud Print connects your printers to the Web, allowing you to print from mobile devices including smartphones, tablets, laptops and Chromebooks, from anywhere you have an Internet connection. You can even share your work or home printer with anyone you choose for added convenience.

Enterprise-Level Document Security

Businesses produce numerous official documents containing confidential information, which requires highly secure printing. ProXpress M4070 | 3870 | 3370 series MFPs offer greater control of users, document and network access with Samsung SyncThru™ Admin at the enterprise security level.

With Samsung SyncThru™ Admin, businesses can administer, operate and manage print jobs securely.



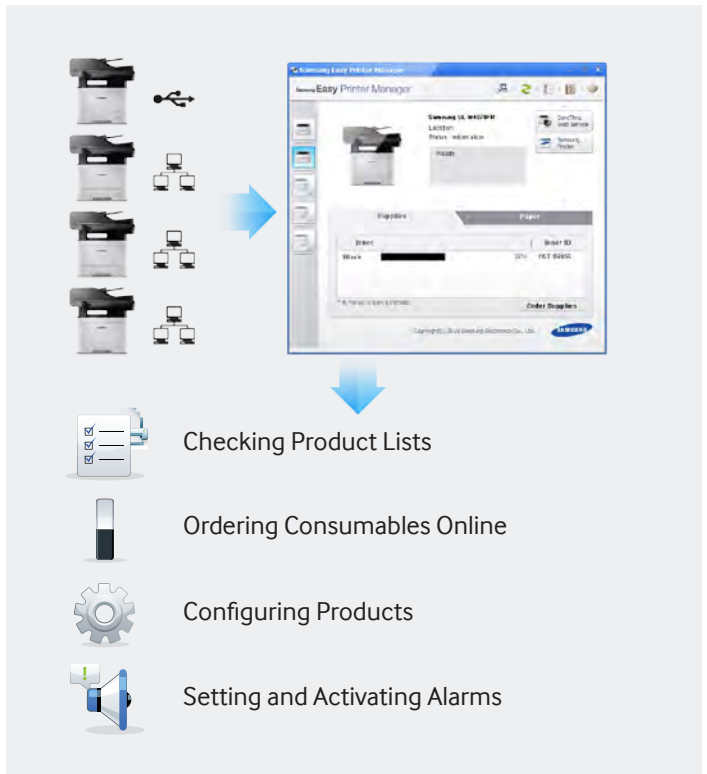
Network Access Control	
- SSL - 802.1x	- IP/MAC Filtering - All Network Port Control, IPSEC
User Access Control	
- LDAP/Local Authentication - Authorization (Role) Manager	- Job and Access Log
Document Access Control	
- Data Encryption, Function Lock	

Simplify print jobs with easy security management.

Streamline printing with easy-to-use design.

Easy Printer Manager

The Easy Printer Manager helps companies remotely control settings, such as the One-touch Eco Button, and copy, scan and fax settings. Multiple devices can be monitored and managed using the Easy Printer Manager. Businesses can also monitor printer status such as error messages, including paper empty, toner empty and paper jam alerts.



Easy Document Creator

With the Easy Document Creator, employees can create digital documents in multiple formats and share them through email or social networks. A document converter for smartphones, e-book readers, and social media provide users convenience with less effort.



Easy Secure Printing

The ProXpress M4070 | 3870 | 3370 series MFPs feature easy secure printing capability right out of the box. A user can elect to send a confidential or personal print job right from the driver, which can only be accessed by entering the PIN on the built-in keypad. Not only does this protect sensitive information, but it reduces the number of wasted prints if a user decides they no longer needed the print job, thereby lowering costs.



Optimize the print environment with high performance and efficiency.

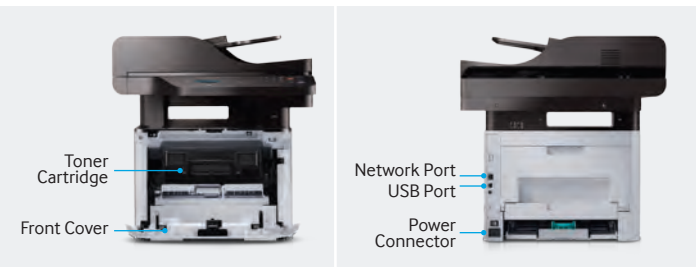
The Intelligent Choice

Samsung ProXpress M4070 | 3870 | 3370 series MFPs provide high performance with print speeds of up to 42 ppm¹. The printers produce professional-quality printouts with more reliable paper handling, and support a range of media types up to 58 lbs.

Along with the enhanced print and copy management, companies can achieve greater cost efficiency through robust Eco features for lower toner and paper costs based on higher cartridge yields.

ProXpress M4070 | 3870 | 3370 series MFPs provide versatility with 4-in-1 multifunctional capabilities, duplex printing, mobile and wireless⁴ printing, and added security at the enterprise-security level.

With convenient features such as the Easy Printer Manager, Easy Document Creator, and secure printing, ProXpress M4070 | 3870 | 3370 series MFPs help improve printing and document processing efficiency for all types of businesses.



Features	Benefits
600MHz Processor and 256 MB Memory	Boost print and scan productivity with high quality results.
ReCP Technology	Produce sharp and clean print and scan outputs.
Various Media Handling	Produce and handle more types of documents with support for heavy media.
One Touch Eco Button	Support cost and energy saving functions of 2-up/duplex printing, skipping blank pages, and toner saving mode.
Easy Eco Driver	Deliver cost savings by printing only what you need.
4-in-1	Enable users to print, copy, scan, fax and PC-fax with unparalleled convenience, ease and speed.
Easy Printer Manager	Facilitate various printer management and monitoring.
Easy Document Creator	Compile and print complex documents with ease.
SyncThru™ Admin	Secure printing jobs at the enterprise-security level.
Samsung Mobile Print	Print, scan and fax from mobile devices.

1. 42 PPM on M4070FR, 40 PPM on M3870FW, 35 PPM on M3370FD
2. 10,000 page yield toner cartridge is available on M4070 and M3870 series only. 15,000 page yield toner cartridge is available on M4070FR model only.
3. 50-sheet multipurpose tray is available on M4070 and M3870 series only. 1-sheet bypass available on M3370 series.
4. Wireless and Wi-Fi Direct available on M3870FW only