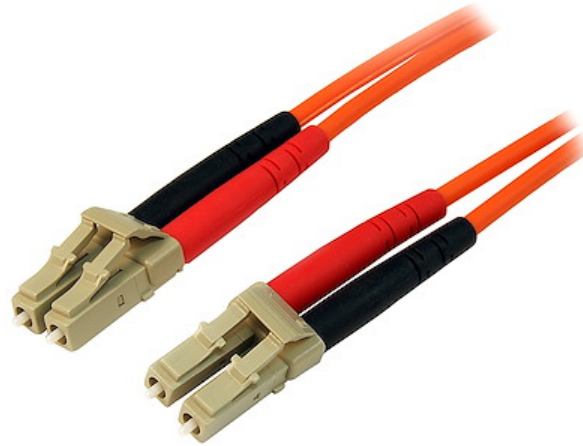


30m Fiber Optic Cable - Multimode Duplex 50/125 - LSZH Fiber Jumper Cord - LC/LC

Product ID: 50FIBLCLC30



The 50FIBLCLC30 30m LSZH LC to LC Fiber Cable features 50/125 micron fiber for high-speed, high bandwidth data transmissions over Gigabit Ethernet and Fiber Channel networks, with support for duplex multimode applications.

This LC-LC patch cable is housed in a LSZH (Low-Smoke, Zero-Halogen) flame retardant jacket, to ensure minimal smoke, toxicity and corrosion when exposed to high sources of heat, in the event of a fire. Making it ideal for use in industrial settings, central offices and schools, as well as residential settings where building codes are a consideration.

Each Duplex 50/125 (OM2) Multimode Fiber Patch Cable is individually tested and certified to be within acceptable optical insertion loss limits for guaranteed compatibility and 100% reliability and is backed by our lifetime warranty.

Certifications, Reports and Compatibility



Applications

- Ideal solution for data applications requiring high speed data transmission
- Broadband systems
- Telecommunication / Data communication
- Used by long distance networks with mission critical data

Features

- Immune to electrical interference
- OM2 (50/125) 500MHz multimode fiber
- LSZH (Low-Smoke, Zero-Halogen) cable jacket
- Attenuation loss meets or exceeds industry standards

Hardware

Warranty	Lifetime
Fiber Size	50/125
Cable Jacket Material	Low Smoke Zero Halogen
Fire Rating	LSZH Rated (Low Smoke Zero Halogen)
Fiber Classification	OM2

Performance

Maximum Data Transfer Rate	10Gbps
Cable Rating	1Gbps / 10Gbps
Type	Multi Mode

Connector(s)

Connector A	1 - Fiber Optic LC Duplex
Connector B	1 - Fiber Optic LC Duplex

Environmental

Operating Temperature	-20C to 60C (-4F to 140F)
Storage Temperature	-20C to 60C (-4F to 140F)
Humidity	0~90% RH

Physical Characteristics

Color	Orange
Cable Length	98.4 ft [30 m]

Product Length	98.4 ft [30.0 m]
Product Width	0.6 in [1.5 cm]
Product Height	0.4 in [1.1 cm]
Weight of Product	13.4 oz [380.0 g]

Packaging Information

Package Quantity	1
Package Length	7.5 in [19.1 cm]
Package Width	8.0 in [20.4 cm]
Package Height	2.7 in [6.9 cm]
Shipping (Package) Weight	13.6 oz [386.0 g]

What's in the Box

Included in Package	1 - 30m Multimode 50/125 Duplex Fiber Patch Cable LC – LC
---------------------	---

Warranty Information

Warranty	Lifetime
----------	----------

**Product appearance and specifications are subject to change without notice.*