

SAMSUNG

proXpress

Multifunction
C3060FR

Professional-quality
for you
Cost efficiency
for your business



SMART PRINTING.
BUSINESS INNOVATION.



INCREASE WORK PRODUCTIVITY WITH PROFESSIONAL PRINT QUALITY AND COST EFFICIENCY

Overview

Elevate your business with cost efficiency and professional printing

In today's competitive marketplace, businesses cannot afford devices that slow them down. Today's printers must be cost-efficient and ensure professional-grade print quality and fast printing for high productivity. Successful businesses need smart printing solutions with exceptional performance and low maintenance costs.

New Samsung ProXpress C3060FR provides businesses with cost efficiency, professional print quality and fast printing speed. A larger toner capacity reduces Total Cost of Ownership (TCO) and Samsung's IFS technology lowers power consumption. Businesses can also count on Samsung ReCP technology for high-quality print, copy and scan results with the finest details. Samsung ProXpress C3060FR boosts productivity by cutting print times with exceptionally fast print speed, and enables businesses to expand their work range with support for a variety of thicker paper types. Samsung ProXpress C3060FR gives small and medium-sized businesses the tools they need to compete at a higher level.

Samsung ProXpress C3060FR



C3060FR (30 ppm)

Key benefits

Worry less about costs with money-saving technology

- Lower TCO with larger toner capacity
- Reduce power consumption with Samsung IFS technology

Print with professional quality colour and remarkable precision

- Enhance graphic quality with Samsung Rendering engine for Clean Page (ReCP) technology
- Get high-quality print output with crisp detail

Boost productivity with exceptionally fast printing

- Experience strong performance with a Dual CPU (800 MHz & 400 MHz)
- Support various types of thicker paper
- Simplify integration with support for XOA-Web
- Ready for PrinterOn

WORRY LESS ABOUT COSTS WITH MONEY-SAVING TECHNOLOGY

Lower TCO with larger toner capacity

High-capacity toner cartridges yield 8K in mono and 5K in colour, supporting businesses with heavy print demands and cutting cartridge costs. Long-lasting consumable parts significantly reduce maintenance costs.



Larger
Toner capacity

Reduce power consumption with Samsung IFS technology

Energy-efficient Instant Fusing System (IFS) technology shortens warm-up periods before print jobs. The technology minimises total energy consumption when the device is sleeping, warming up and operating.



Lower
power consumption



PRINT WITH PROFESSIONAL-QUALITY COLOUR AND REMARKABLE PRECISION

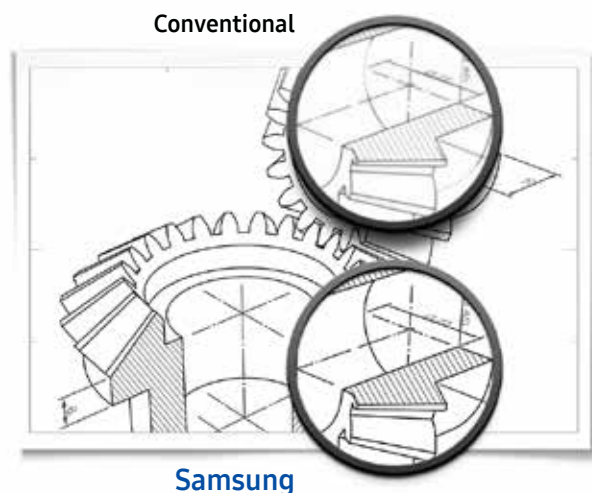
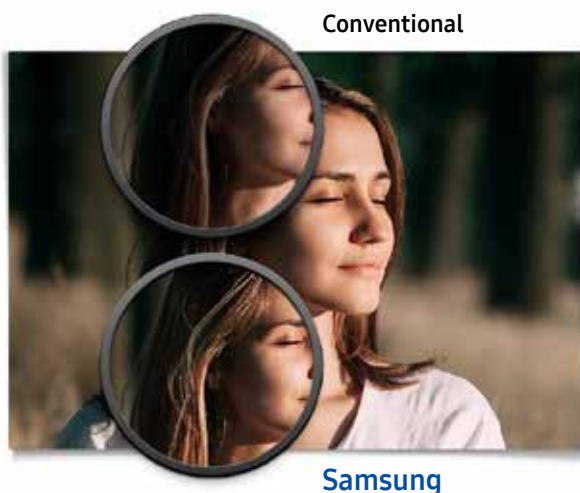
Enhance graphic quality with Samsung ReCP technology

Attention to detail is critical for professionals. Samsung's unique ReCP technology built into Samsung ProXpress C3060FR ensures crisp detail, so that even the smallest printed text is legible. ReCP also delivers clean text and image scans, reducing blurry patterns.



Get high-quality print output with crisp detail

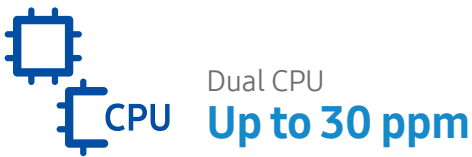
Images require accurate colour expression and precise details. With the Samsung ProXpress C3060FR, businesses can print images with the natural colours of the original image, including all the small detail with a wider contrast range, and even complex blue prints with intricate details.



BOOST PRODUCTIVITY WITH EXCEPTIONALLY FAST PRINTING

Experience strong performance with a Dual CPU

Samsung ProXpress C3060FR is equipped with a Dual CPU optimised for printing. The Dual CPU boosts work productivity with remarkable print speed for heavy jobs, particularly when printing graphic images.



Support various types of thicker paper



Expand your range of productivity with Samsung ProXpress C3060FR. Print documents from office envelopes to professional certificates with support for various types of thick paper up to 220g/m².



Simplify integration with support for XOA-Web

Connect to printing solutions with XOA-Web for fast and easy integration to help your business run more efficiently and smoothly.



Ready for PrinterOn

Print securely and efficiently from virtually anywhere. Because Samsung ProXpress C3060FR is ready for PrinterOn, you can easily add other devices.



SAMSUNG MULTIFUNCTION PRINTER

proXpress C3060FR

Specifications

General	C3060FR
Standard Functions	Print, Copy, Scan, Fax
Processor	800 MHz + 400 MHz (Dual CPU)
Operational Panel	4.3" Colour Touch Screen Panel
Memory (Standard)	512 MB
Memory (Maximum)	512 MB
Hard Disk Drive	4 GB (SD Card)
Interface (Standard)	USB Device, USB Host x 2, Ethernet 10/100/1000 Base TX
Interface (Optional)	IEEE 802.11 b/g/n (NFC Active Type)
Warm-up Time (From Power On)	26 sec
Warm-up Time (From Sleep)	26 sec
Power Requirements	AC 220 - 240 V, 50 / 60 Hz, AC 110 - 127 V, 50 / 60 Hz (Not dual voltage, power supply varies by country)
Power Consumption	500 W (Printing), 500 W (Copying), 40 W (Ready), 1.4 W (Sleep), 1.6 kWh (TEC)
Noise Level	Less than 52 dBA (Printing), Less than 54 dBA (Copying), Less than 37 dBA (Ready)
Dimension (WxDxH)	469 x 452.5 x 504.3 mm (18.5" x 17.8" x 19.9")
Weight (SET Only / SET with Supplies)	Set Only : 23.2 kg (51.2 lb) Set with Supplies : 26.3 kg (58 lb)
Max. Monthly Duty Cycle	60,000 pages
Recommended Monthly Print Volume	1,000 - 2,500 pages
Security	SSL/TLS, IPv6, IPsec, SNMPv3, IEEE 802.1x, Kerberos, SMB, LDAP, Protocol&Port Management, IP/MAC Filtering, Audit Log, Access Control
Client OS Support	Windows : XP (32/64 bit), 2003 Server (32/64 bit), Vista (32/64 bit), 2008 Server (32/64 bit), Windows 7 (32/64 bit), 2008 Server R2 (64 bit), Windows 8 (32/64 bit), Windows 8.1 (32/64 bit), Windows Server 2012 (64 bit), Windows Server 2012 R2 (64 bit), Windows 10 (32/64 bit) Linux : RedHat Enterprise Linux 5, 6, Fedora 12, 13, 14, 15, 16, 17, 18, 19, 20, OpenSuSE 11.2, 11.3, 11.4, 12.1, 12.2, 12.3, 13.1, Ubuntu 10.04, 11.04, 11.10, 12.04, 12.10, 13.04, 13.10, 14.04, SuSE Linux Enterprise Desktop 10, 11, Debian 6, 7, Mint 13, 14, 15, 16 Unix : Sun Solaris 9, 10, 11 (x86, SPARC), HP-UX 11.0, 11i v1, 11i v2, 11i v3 (PA-RISC, Itanium), IBM AIX 5.1, 5.2, 5.3, 5.4, 6.1, 7.1 (PowerPC) Mac : OS 10.5 - 10.11
Network Protocols	TCP/IPv4, IPv6, DHCP, BOOTP, AutoIP, DNS, DDNS, WINS, Standard TCP/IP, LPR/LPD, IPP, ThinPrint, Google Cloud Print, AirPrint, WSD print, FTP print, HTTP, SNMP (v1/2c/3), Telnet, SLP, Bonjour, UPnP (SSDP), WSD Discovery, SMTP, FTP, LDAP, SMB, Kerberos

Print	C3060FR
Speed (Mono)	Up to 30 ppm in A4 (31 ppm in Letter)
Speed (Colour)	Up to 30 ppm in A4 (31 ppm in Letter)
First Print Out Time (Mono)	As fast as 9 sec
First Print Out Time (Colour)	As fast as 10 sec
Resolution	Up to 9,600 x 600 dpi Effective Output
Print Languages	SPL, PCL5, PCL6, PS3, PDF V1.7
Duplex Print	Built-in
Direct Print Support	JPEG, PDF, PRN, TIFF, XPS
Print Features	WSD Print, Secure Print, Stored Print, Booklet Print, N-up, Cover Page Print, Barcode Print, Eco Print, Skip Blank Page, Poster Print, Watermark, Tray Priority Settings, Auto Tray Switching, Tray Protection, Direct Print from USB, Secure PDF Print
Mobile Print Feature	Apple AirPrint, Mopria-certified, Google Cloud Print, Samsung Cloud Print, PrinterOn Cloud Print, Samsung Mobile Print, Samsung Print Plugin

Copy	C3060FR
Speed (Mono)	Up to 30 cpm in A4 (31 cpm in Letter)
Speed (Colour)	Up to 30 cpm in A4 (31 cpm in Letter)
First Copy Out Time (Mono)	As fast as 13 sec
First Copy Out Time (Colour)	As fast as 13 sec
Resolution	600 x 600 dpi
Reduce / Enlarge Range	25 - 400 %
Multi Copy	9,999 pages
Duplex Copy	Built-in
Copy Features	ID Copy, N-Up, Auto Fit, Book Copy, Watermark, Stamp, Edge Erase, Background Adjustment, Program

Scan	C3060FR
Scan Speed (Mono)	24 ipm (300 dpi)
Scan Speed (Colour)	24 ipm (300 dpi)
Compatibility	Windows : TWAIN, WIA Mac : TWAIN, ICDM Linux : SANE
Method	Colour CIS
File Format	PDF, PDF Encryption, Digital Signature in PDF, PDF/A, TIFF, XPS, JPEG
Resolution (Optical)	Up to 600 x 600 dpi
Resolution (Enhanced)	Up to 4,800 x 4,800 dpi
Scan Destinations	Email, FTP, SMB, BOX, USB, WSD, PC, Samsung Cloud, Shared Folder
Scan Document Weight	60 - 120 g/m ²

FAX	C3060FR
Compatibility	ITU-T G3, Super G3
Modem Speed	33.6 kbps
Resolution	Up to 300 x 300 (Mono), Up to 200 x 200 (Colour) dpi
Compression Method	MH, MR, MMR, JBIG, JPEG
Memory	SD Card
Auto Dial	Yes
Fax Feature	Speed Dial, Group Dial, ECM, Caller ID, Auto Redial, On Hook Dial, Delay Send, Multi Send, Job Build, Secure Reception, Forwarding to Fax/Email/SMB/FTP/PC, Colour Fax(Send, Receive), etc.

Paper Handling	C3060FR
Input Capacity (Cassette)	250 sheets
Input Capacity (Multipurpose Tray)	50 sheets
Input Capacity (Maximum)	1,400 sheets (Standard 300 sheets + Optional 550-sheet Second Cassette Feeder x 2)
Media Type (Cassette)	Plain, Thin, Thick, Thicker, Cotton, Coloured, Pre-Printed, Recycled, Bond, Archive, Letterhead, Hole Punched, Cardstock, Glossy Photo, Envelope, Label
Media Type (Multipurpose Tray)	Plain, Thin, Thick, Thicker, Cotton, Coloured, Pre-Printed, Recycled, Bond, Archive, Letterhead, Hole Punched, Cardstock, Glossy Photo, Envelope, Label
Media Size (Cassette)	A4, A5, A6, B5(JIS), B5(ISO), Legal, Letter, Executive, Statement, Oficio, Folio, Envelope Monarch, Envelope DL, Envelope C5, Envelope C6, Envelope No. 10, Envelope No. 9, Postcard, Custom (98 x 127 mm - 216 x 356 mm (3.86" x 5" - 8.5" x 14"))
Media Size (Multipurpose Tray)	A4, A5, A6, B5(JIS), B5(ISO), Legal, Letter, Executive, Statement, Oficio, Folio, Envelope Monarch, Envelope DL, Envelope C5, Envelope C6, Envelope No. 10, Envelope No. 9, Postcard, Index Card 3x5, Custom (76 x 127 mm - 216 x 356 mm (3" x 5" - 8.5" x 14"))
Media Weights (Cassette)	60 - 220 g/m ²
Media Weights (Multipurpose Tray)	60 - 220 g/m ²
ADF Type	RADF
ADF Document Capacity	50 sheets
Output Capacity	150 sheets

Supplies	C3060FR
Toner (Black)	CLT-K503L (8,000 pages) * Declared Yield Value in accordance with ISO/IEC 19798 * Ships with initial toner cartridges yield 4,000 pages
Toner (Colour)	Yellow Toner : CLT-Y503L (5,000 pages) Magenta Toner : CLT-M503L (5,000 pages) Cyan Toner : CLT-C503L (5,000 pages) * Declared Yield Value in accordance with ISO/IEC 19798 * Ships with initial toner cartridges yield 2,500 pages
Waste Toner Bottle	CLT-W506 (Approx. 20,000 pages (Black), 5,000 pages (Colour))

Options

Second Cassette Tray	SL-SCF3000
Capacity	550 sheets
Media Sizes	A4, A5, B5(JIS), B5(ISO), Legal, Letter, Executive, Statement, Oficio, Folio, Custom (98 x 210 mm - 216 x 356 mm (3.86" x 8.3" - 8.5" x 14"))
Media types	Plain, Thin, Thick, Recycled, Bond, Archive, LetterHead, Hole Punched, Cardstock
Media weight	60 - 163 g/m ²
Sensing	H/W Install Detect, Paper Empty Detect
Dimension (WxDxH)	420 x 453 x 147 mm (16.5" x 17.8" x 5.8")
Weight	5.4 kg (11.9 lb)

CUSTOMISE YOUR MFP WITH FLEXIBLE OPTIONS

Configurations & Options

Optional



SAMSUNG

About Samsung Electronics Co., Ltd.

Samsung Electronics Co., Ltd. inspires the world and shapes the future with transformative ideas and technologies, redefining the worlds of TVs, smartphones, wearable devices, tablets, cameras, digital appliances, printers, medical equipment, network systems and semiconductors. We are also leading in the Internet of Things space through, among others, our Digital Health and Smart Home initiatives. We employ 307,000 people across 84 countries. To discover more, please visit our official website at www.samsung.com and our official blog at global.samsungtomorrow.com.

Copyright © 2016 Samsung Electronics Co., Ltd. All rights reserved. Specifications and designs are subject to change without notice. Nonmetric weights and measurements are approximate. All data were deemed correct at time of creation. Samsung is not liable for errors or omissions. All brand, product, service names and logos are trademarks and/or registered trademarks of their respective owners and are hereby recognised and acknowledged.

AirPrint is a trademark of Apple Inc. registered in the U.S. and other countries. Android and Google Cloud Print are trademarks of Google Inc. Samsung Cloud Print is either a trademark or registered trademark of Samsung Electronics Co., Ltd. Microsoft and Windows are registered trademarks of Microsoft Corporation in the United States and/or other countries.

Mopria®, the Mopria® Logo and the Mopria® Alliance logo are registered trademarks and service marks of Mopria Alliance, Inc. in the United States and other countries.

Samsung Electronics UK Ltd
Samsung House, 1000 Hillwood Drive, Chertsey, Surrey, KT16 0PS

