



# Unrivalled Productivity

Seamless integration for a simple business workflow solution



Samsung Monochrome Laser Printer  
ML-5510/6510 Series



# Samsung Monochrome Laser Printer ML-5510N/5510ND/6510ND Series

Delivering a business print solution that answers both simplicity and productivity needs can be a challenge, especially across today's diverse business environment. With hassle-free integration and easy-to-use functionality, the Samsung Mono Laser Printer ML-5510/6510 series delivers unlimited productivity – simply.

## Product Configuration





# Configuration

	Basic	Advanced	Full Featured
Configuration	Main SET + Tray2 + Short Stand	Main set + Tray2 + Tray3 + Tray4 + Tray5 + Short Stand	Main set + Tray2 + Tray3 + Tray4 + Tray5 + Short Stand + Finisher with Stapler
Max Input Paper Capacity	520(CST)x2 + 100(MP) = 1,140	520(CST)x5 + 100(MP) = 2,700	520(CST)x3 + 100(MP) + 2,000(HCF) =3,660
Max Output Paper Capacity	500(CST)	500(CST)	500(CST) + 500(Finisher) =1,000
Outline			

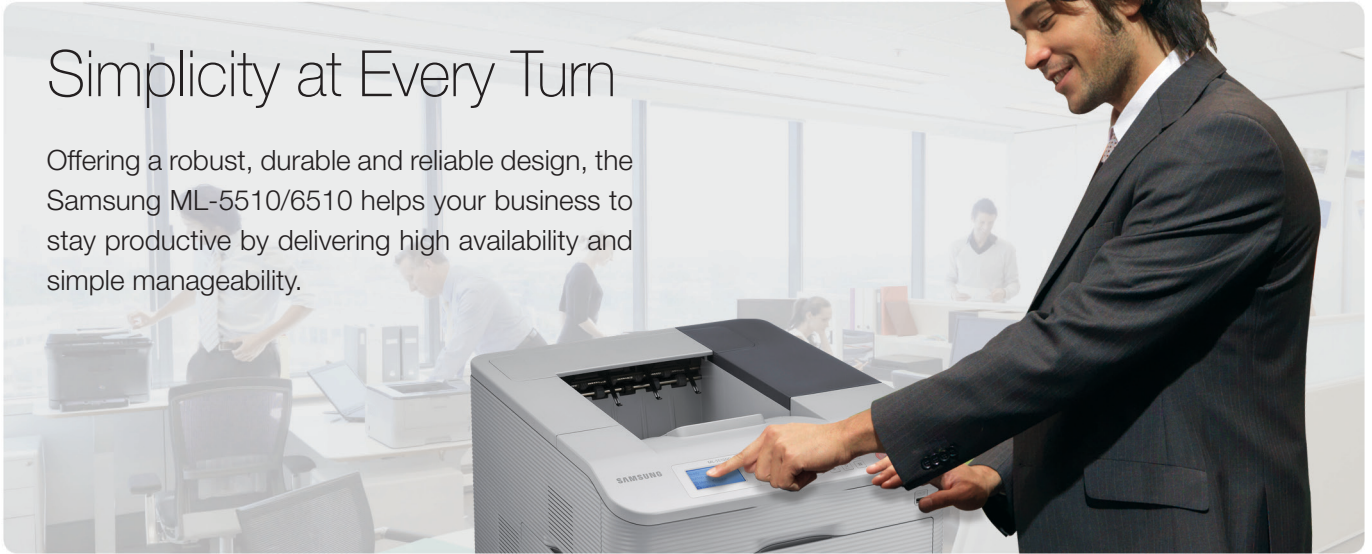
# Option & Supplies

				
Parallel Connector ML-PAR100	Maintenance Kit ML-PMK65K/SEE (220V) ML-PMK65K/XAA (110V)	Short Stand ML-DSK65S	Wireless N/W ML-NWA65L	Finisher ML-OCT65
				
Mailbox ML-MBT65	Duplex ML-U5510A	HDD ML-HDK465	High Capacity Feeder ML-H6510A	Second Cassette Feeder ML-S6510A
				
Memory ML-MEM170	50-sheet Staple Cartridge SCX-STP000	Imaging Unit MLT-R309	Black Toner Cartridge Initial Toner MLT-D309S	Black Toner Cartridge High Yield Toner MLT-D309L



## Simplicity at Every Turn

Offering a robust, durable and reliable design, the Samsung ML-5510/6510 helps your business to stay productive by delivering high availability and simple manageability.



### Durable and Reliable

Its high monthly duty cycle of up to 275,000 sheets ensures it can cope with the pressures of a busy office, while Samsung's Anti-Jam Technology, which uses a semi-retard roller system to significantly reduce the occurrence of multiple sheet pickups, misfeeds and paper jams, ensures that valuable time isn't wasted dealing with paper-handling issues.



### Simple to Maintain

The Samsung User Replaceable Maintenance Kit provides a kit of easy to install parts that require periodical replacement, removing the need for routine service visits and avoiding long periods of downtime while waiting for replacement parts or service calls.



- Fuser **150K**
- Feed Rollers\* (Pickup Roller, Forward Roller, Retard Roller) **200K for Pickup/Forward, 100K for Retard**
- Transfer Roller **100K**

### Productivity Boosting Features

Designed with all types of users in mind, the Samsung ML-5510/6510 series delivers user-friendly functionality that enhances productivity and maximises value. Its easy-to-use 4 line LCD control panel and numeric keypad facilitates effective operation of the device – regardless of technical ability.

For busy workgroups, a USB port on the front panel of the printer, provides the ability to easily print compatible files\* directly from a USB memory device – removing the need to connect to a PC.

\*Includes PRN (with suitable driver support), BMP, TIFF, JPEG and PDF file types





## Efficient and Economical

With innovative features and high capacity toner cartridges, the Samsung ML-5510/6510 series enables your business to deliver considerable savings on your print costs.

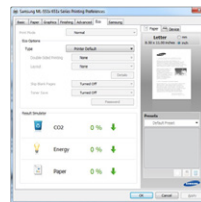


## ECO-Friendly Approach

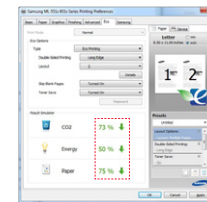


A convenient one-touch ECO button enables you to save paper (administrators can set-up options such as duplex or 2-up printing, where two pages are printed per sheet of paper) and reduce toner consumption by up to 30%.

The unique Samsung Result Simulator expands this further by providing a graphic representation of how much you can save on your Carbon Footprint, power consumption and paper usage, depending on the options you select.



ECO mode off



ECO mode on  
Duplex, 2-up Printing

- Carbon Footprint : Reduce **73%**
- Power Consumption : Reduce **50%**
- Paper Used : Reduce **75%**

## Reduced TCO

Printing up to 30,000 pages per toner cartridge, the Samsung ML-5510/6510 series delivers a convenient and economical office printing solution. Providing a lower cost per page and requiring fewer replacements than standard toner cartridges, you can reduce your costs and improve productivity. And with separate toner and drum cartridges, you can reduce your TCO even further by replacing the drum unit only when required, rather than with every new toner cartridge.





## Productive and Convenient

By harnessing fast print speeds and convenient functions, the Samsung ML-5510/6510 series delivers the reliable, high-quality performance that today's diverse and busy office demands.



### Powerful Technology – Powerful Performance

A powerful 700MHz processor with Samsung's state-of-the-art System-On-Chip Technology delivers performance levels usually associated with enterprise level printers. While 1Gbit LAN support enables large documents from multiple users to be received and processed quickly. This, alongside fast print speeds of up to 62ppm\* (A4) and a First Print Out Time of less than 8 seconds means that, no matter what they are trying to print, users won't have to wait for their documents.

### Wireless connectivity

For users who use multiple mobile devices, like smartphones or Tablet PCs the ML-5510/6510 series model delivers the ultimate flexibility. Saving time and hassle, Samsung Mobile Printing enables you to connect your mobile devices directly to your ML-5510/6510 series. There's no need to install a new driver or configure network settings, simply download the Samsung Mobile Printing application from the Samsung Web store, and once downloaded it will automatically detect compatible Samsung multifunctional printers. Giving you the flexibility to print files directly from your mobile device, without having to connect through a PC.

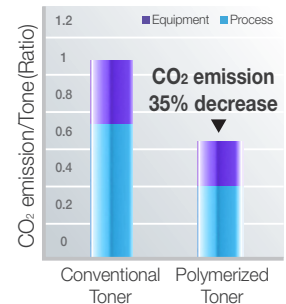
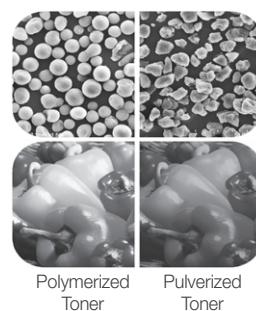
### Effective Paper Handling

The Samsung ML-5510/6510 series' high quality print output makes it ideal for printing general business documents, reports and presentations to the highest standards. It offers a wide range of paper handling capabilities, including duplex as standard, higher than average paper capacity, heavier media compatibility and full range of finishing options. Both the main tray and multi-purpose tray can manage envelopes, card stock and other special media, so users can achieve the high quality documents they need, regardless of the type of media they use.



### High Quality Output

Samsung's Polymerized Toner produces sharper images and lines, thanks to smaller, more uniform toner particles compared to traditional toner. The improved print resolution and glossier finish enables you to easily produce professional looking documents. While the higher wax content protects your printouts against folds and smudges, resulting in improved durability and at the same time, helping to prevent paper jams through reduced paper curl. As the printer transfers Polymerized Toner to the paper in a thinner uniform layer, waste toner is reduced and a lower fusing temperature is required, helping to reduce power consumption.



\*ML-5510) 52ppm(A4)/55ppm(Ltr), ML-6510 62ppm(A4)/65ppm(Ltr)



## Effective Solutions

Managing an effective print environment requires much more than high-quality network print devices, today's business demands productive solutions that answer specific needs within their business. Samsung's extensive range of print and document management solutions do exactly that – combining quick, high quality print with seamless network integration and compliance, all supported by the very latest device, workflow and security functionality.



## Device Management

For IT network administrators to focus on providing a reliable, value-add service delivery, it's vital to manage a complex print infrastructure with simple administration tools. Easy to install and manage, Samsung SyncThru™ Web Admin manages networked, single and multifunction print devices. SyncThru™ Web Admin provides increased efficiency and productivity by allowing IT administrators, support staff and users to manage, monitor and diagnose multiple printing devices remotely via a familiar Web interface.

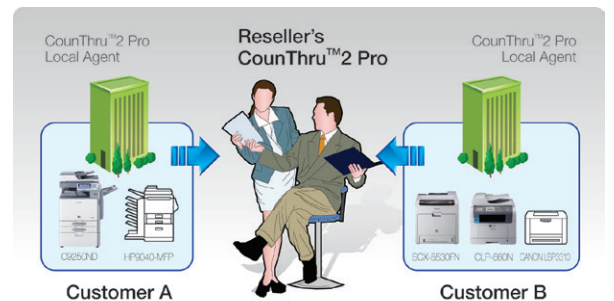


Samsung Electronics Company Ltd.  
Samsung SyncThru Admin 5  
Outstanding Network Device  
Management Solution



## Billing and Job Accounting

Many administrators require in-depth information on the volumes of printing performed by each user on any device. CounThru 2 is a managed print service from Samsung that provides the insight required for businesses (or IT Partners on their behalf) to remotely manage and optimise a distributed system of network printers across their enterprise, for full financial and operational reporting with minimal effort.



## Out-of-the Box Solutions

Features within the Samsung ML-5510/6510 series enable businesses to simplify their workflow processes right out of the box. Samsung's Barcode† printing solution integrates seamlessly into enterprise applications, with barcode fonts that improve the efficiency of automatic data collection processes and lower associated costs.

A Secure Job-Release function is also provided at no additional cost. For enabled users, documents are only released for printing when they enter their pin code using the numeric keypad on the device. This removes the issue of sensitive or confidential information being left on the printer.

\* Barcode Solution is available as an option (SOL-BPSV1)



# Specifications

	ML-5510N	ML-5510ND	ML-6510ND
<b>Print</b>			
Speed (Mono)	Up to 52 ppm in A4 (55 ppm in Letter)		Up to 62 ppm in A4 (65 ppm in Letter)
Resolution	Up to 1,200 x 1,200 dpi effective output		
First Print Out Time (Mono)	As fast as 7.8sec		
Emulation	PCL5e, PCL6, KS/KSSM, KS5895, IBM ProPrinter, EPSON, PostScript3, PDF Direct V1.7, XPS v1.0		
Duplex	Optional	Built-in	
<b>Paper Handling</b>			
Input Capacity and Types	520-sheet Cassette, 100-sheet Multi Purpose Tray @80g/m <sup>2</sup> , (550-sheet Cassette, 100-sheet Multi Purpose Tray @75g/m <sup>2</sup> )		
Output Capacity and Type	500-sheet Face-Down		
Media Size	76 x 127mm (3" x 5") ~ 216 x 356mm (8.5" x 14"), (Envelope: Monarch, No10, DL, C5, C6, No9)		
Media Type	Printer Default, Plain Paper, Thick Paper, Thin Paper, Bond Paper, Color Paper, CardStock, Labels, Transparency, Envelope, Preprinted, Recycled Paper, Archive, Extra Thick		
Envelope Capacity	50sheets from Cassette & 50sheets from optional 1st Second Cassette, (Max. 100sheets)		
<b>General</b>			
Processor	Samsung 700MHz processor		
Memory/Storage	256MB (Max. 768MB)		
OS Compatibility	Windows 8 / 7 / Vista / XP / 2000 / 2008R2 / 2008 / 2003, Mac OS X 10.4 - 10.8, Various Linux / Unix		
Interface	Ethernet 10/100/1000 Base TX, High Speed USB 2.0, Host USB 2 Port (Rear 1 Port & Front 1 Port), IEEE 1284B Parallel connector (Option), 802.11 b, g, n wireless network (Option)		
Noise Level	Less than 56dBA (Printing), Background Noise Only (Less than 30dBA) (Standby)		Less than 58dBA (Printing), Background Noise Only (Less than 30dBA) (Standby)
Duty Cycle, Monthly	275,000 sheets		
Dimension (WxDxH)	464 x 540 x 420mm		
Weight	34.2kg (Inc. Imaging Unit/Toner/WTB), 30.6kg (exc. Imaging Unit/Toner/WTB)	34.8kg (Inc. Imaging Unit/Toner/WTB), 31.2kg (exc. Imaging Unit/Toner/WTB)	
Power Consumption	820W(Active)/100W(Ready)/10W(Sleep)		900W(Active)/120W(Ready)/10W(Sleep)
<b>Consumables</b>			
Yield	Standard: Average Cartridge Yield 10K standard pages High Yield: Average Cartridge Yield 30K standard pages (Ships with 10,000 pages Starter Toner Cartridge) Imaging Unit: Average Yield 80K standard pages Declared cartridge yield in accordance with ISO/IEC 19752.		
Type	2-piece Cartridge (Toner & Imaging Unit (Drum Unit))		
Model Code	Toner Cartridge: MLT-D309L, MLT-D309S, Imaging Unit: MLT-R309		
<b>Options</b>			
Options	520-sheet Cassette Tray @80g/m <sup>2</sup> (550-sheet Cassette Tray @75g/m <sup>2</sup> ), 2,000-sheet High Capacity Feeder @80g/m <sup>2</sup> , Short Stand, 500-sheet Finisher with Stapler, 400-sheet 4-bin Mailbox, 160GB HDD, 512MB Memory, IEEE 1284B Parallel Connector, 802.11 b, g, n wireless network, Duplexer	520-sheet Cassette Tray @80g/m <sup>2</sup> (550-sheet Cassette Tray @75g/m <sup>2</sup> ), 2,000-sheet High Capacity Feeder @80g/m <sup>2</sup> , Short Stand, 500-sheet Finisher with Stapler, 400-sheet 4-bin Mailbox, 160GB HDD, 512MB Memory, IEEE 1284B Parallel Connector, 802.11 b, g, n wireless network	



Copyright © 2012 Samsung Electronics Co. Ltd. All rights reserved. Samsung is a registered mark of Samsung Electronics Co. Ltd. Specification and design are subject to change without notice. Non-metric weights and measurements are approximate. All data were deemed correct at time of creation. Samsung is not liable for errors or omissions. All brand, product, service names, and logos are trademarks and/or registered trademarks of their respective owners, and are hereby recognized and acknowledged.

Contact :  
Web: [www.samsung.com](http://www.samsung.com)

