



Philips  
LCD monitor with Ultra  
Wide-Color

**E Line**  
27" (68.6 cm)  
Full HD (1920 x 1080)

**276E7QSH**



## Vivid, true-to-life colors

in an elegant design

This brilliant wide view display with Ultra Wide-Color offers true-to-life colors wrapped in an elegance-inspired design for a light and fresh face in any home or office.

### Superb Picture Quality

- Ultra Wide-Color wider range of colors for a vivid picture
- PLS LED wide-view technology for image and color accuracy
- 16:9 Full HD display for crisp detailed images
- Less eye fatigue with Flicker-free technology
- SmartContrast for deep black level details
- SmartImage Lite for easy optimized image settings

### Elegant Design

- EasySelect menu toggle key for quick on-screen menu access
- Elegant, slim design complements your home decor
- Superb glossy finish enhance your home decoration

### Greener everyday

- Low power consumption saves energy bills
- Eco-friendly materials that meets international standards

# PHILIPS

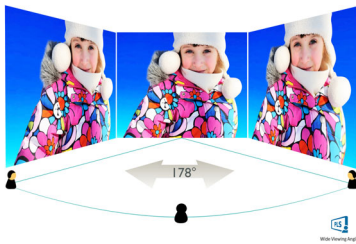
# Highlights

## Ultra Wide-Color Technology



Ultra Wide-Color Technology delivers a wider spectrum of colors for a more brilliant picture. Ultra Wide-Color wider "color gamut" produces more natural-looking greens, vivid reds and deeper blues. Bring, media entertainment, images, and even productivity more alive and vivid colors from Ultra Wide-Color Technology.

## PLS technology



PLS displays uses an advanced technology which gives you extra wide viewing angles of 178/178 degree, making it possible to view the display from almost any angle - even in 90 degree Pivot mode! Unlike standard TN panels, PLS displays gives you remarkably crisp images with vivid colors, making it ideal not only for Photos, movies and web browsing, but also for professional applications which demand color accuracy and consistent brightness at all times.

## 16:9 Full HD display



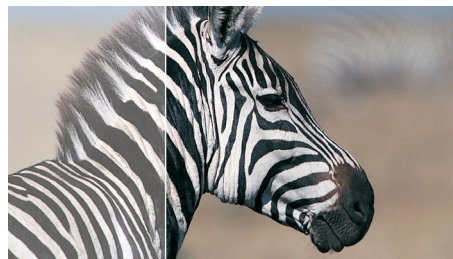
Picture quality matters. Regular displays deliver quality, but you expect more. This display features enhanced Full HD 1920 x 1080 resolution. With Full HD for crisp detail paired with high brightness, incredible contrast and realistic colors expect a true to life picture.

## Flicker-free technology



Due to the way brightness is controlled on LED-backlit screens, some users experience flicker on their screen which causes eye fatigue. Philips Flicker-free Technology applies a new solution to regulate brightness and reduce flicker for more comfortable viewing.

## SmartContrast



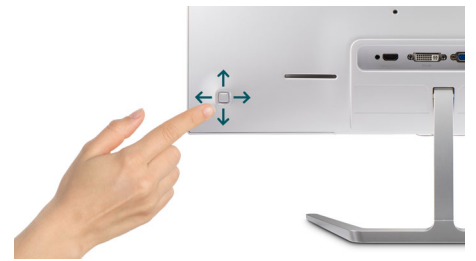
SmartContrast is a Philips technology that analyzes the contents you are displaying, automatically adjusting colors and controlling backlight intensity to dynamically enhance

contrast for the best digital images and videos or when playing games where dark hues are displayed. When Economy mode is selected, contrast is adjusted and backlighting fine-tuned for just-right display of everyday office applications and lower power consumption.

## SmartImage Lite

SmartImage Lite is an exclusive, leading edge Philips technology that analyzes the content displayed on your screen. Based on a scenario you select, SmartImage Lite dynamically enhances the contrast, color saturation and sharpness of images and videos for ultimate display performance - all in real time with the press on a single button.

## EasySelect Menu Toggle Key



The discreetly placed EasySelect Menu Toggle Key allows you to make quick and easy adjustments to monitor settings in the On-Screen Display menu.

## Eco-friendly materials

"Philips is committed to use sustainable, eco-friendly materials across its monitor range. All body plastic parts, metal chassis parts and packing materials use 100% recyclable materials. In some selected models we utilize upto 65% post consumer recycled plastics. Strict adherence to RoHS standards ensure substantial reduction or elimination of toxic substances like Lead, for example. Mercury content in monitors with CCFL backlight has been reduced significantly, while eliminated in monitors with LED backlight completely. Visit Philips @ <http://www.asimpleswitch.com/global/> to learn more.



# Specifications

## Picture/Display

- LCD panel type: PLS LCD
- Backlight type: W-LED system
- Panel Size: 27 inch / 68.6 cm
- Effective viewing area: 597.9 (H) x 336.3 (V)
- Aspect ratio: 16:9
- Optimum resolution: 1920 x 1080 @ 60Hz
- Response time (typical): 5 ms (Gray to Gray)\*
- Brightness: 250 cd/m<sup>2</sup>
- Contrast ratio (typical): 1000:1
- SmartContrast: 20,000,000:1
- Pixel pitch: 0.311 x 0.104 mm
- Viewing angle: 178° (H) / 178° (V), @ C/R > 10
- Flicker-free
- Picture enhancement: SmartImage Lite
- Color gamut (typical): NTSC 104.4% (CIE1976)\*
- Display colors: 16.7 M
- Scanning Frequency: 30 - 83 kHz (H) / 56 - 76 Hz (V)
- sRGB

## Connectivity

- Signal Input: VGA (Analog), DVI-D (digital, HDCP)
- Sync Input: Separate Sync, Sync on Green

## Convenience

- User convenience: Power On/Off, Menu, 4:3 / Wide, Input, SmartImage lite
- OSD Languages: Brazil Portuguese, Czech, Dutch, English, Finnish, French, German, Greek, Hungarian, Italian, Japanese, Korean, Polish, Portuguese, Russian, Simplified Chinese, Spanish, Swedish, Traditional Chinese, Turkish, Ukrainian
- Other convenience: Kensington lock, VESA mount (100x100mm)
- Plug & Play Compatibility: DDC/CI, Mac OS X, sRGB, Windows 8.1 / 8 / 7

## Stand

- Tilt: -5/20 degree

## Power

- On mode: 17.03 W (typ.) (EnergyStar 7.0 test method)
- Standby mode: 0.5 W (typ.)
- Off mode: 0.3 W (typ.)
- Power LED indicator: Operation - White, Standby mode - White (blinking)
- Power supply: External, 100-240VAC, 50-60Hz

## Dimensions

- Product with stand (mm): 616 x 468 x 179 mm
- Product without stand (mm): 616 x 370 x 52 mm
- Packaging in mm (WxHxD): 676 x 544 x 113 mm

## Weight

- Product with stand (kg): 4.33 kg
- Product without stand (kg): 4.08 kg
- Product with packaging (kg): 6.81 kg

## Operating conditions

- Temperature range (operation): 0°C to 40°C °C
- Temperature range (storage): -20°C to 60°C °C
- Relative humidity: 20%-80 %
- Altitude: Operation: +12,000ft (3,658m), Non-operation: +40,000ft (12,192m)
- MTBF: 50,000 (excluding backlight) hour(s)

## Sustainability

- Environmental and energy: EnergyStar 7.0, EPEAT Silver, RoHS, Lead-free, Mercury Free
- Recyclable packaging material: 100 %

## Compliance and standards

- Regulatory Approvals: CE Mark, FCC Class B, CU-EAC, TCO certified, TUV/ISO9241-307, VCCI, WEEE, RCM, CECP, CCC

## Cabinet

- Color: White / Silver / Gold / Red
- Finish: Glossy



Issue date 2017-11-16

Version: 8.1.1

12 NC: 8670 001 29548  
EAN: 69 51613 90877 8

© 2017 Koninklijke Philips N.V.  
All Rights reserved.

Specifications are subject to change without notice.  
Trademarks are the property of Koninklijke Philips N.V.  
or their respective owners.

[www.philips.com](http://www.philips.com)

\* Response time value equal to SmartResponse  
\* NTSC 85% (CIE1931), sRGB: 122.9%