



Philips
LED-backlit LCD monitor

E Line

24 (Viewable 23.6" / 59.9 cm)
Full HD (1920 x 1080)

247E7QHSWP



Vivid colors, crisp details

with Ultra Narrow Bezel

This attractive wide view display with ultra narrow bezel offers awesome, vibrant colors wrapped in an elegance-inspired design for a light and fresh face in any home or office.

Superb Picture Quality

- PLS LED wide-view technology for image and color accuracy
- 16:9 Full HD display for crisp detailed images
- Less eye fatigue with Flicker-free technology
- SmartImage Lite for easy optimized image settings

Stylish design

- Minimalistic looks with Ultra Narrow Bezel
- EasySelect menu toggle key for quick on-screen menu access
- VESA mount for convenience

Experience immersive multimedia

- HDMI-ready for Full HD entertainment

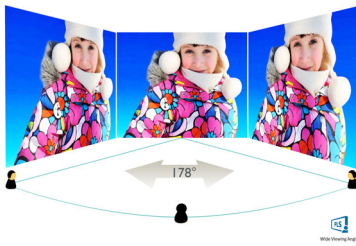
Greener everyday

- Low power consumption saves energy bills
- Mercury Free eco-friendly display
- Eco-friendly materials that meets international standards

PHILIPS

Highlights

PLS technology



PLS displays uses an advanced technology which gives you extra wide viewing angles of 178/178 degree, making it possible to view the display from almost any angle - even in 90 degree Pivot mode! Unlike standard TN panels, PLS displays gives you remarkably crisp images with vivid colors, making it ideal not only for Photos, movies and web browsing, but also for professional applications which demand color accuracy and consistent brightness at all times.

16:9 Full HD display



Picture quality matters. Regular displays deliver quality, but you expect more. This display features enhanced Full HD 1920 x 1080 resolution. With Full HD for crisp detail paired with high brightness, incredible contrast and realistic colors expect a true to life picture.

Flicker-free technology



Due to the way brightness is controlled on LED-backlit screens, some users experience

flicker on their screen which causes eye fatigue. Philips Flicker-free Technology applies a new solution to regulate brightness and reduce flicker for more comfortable viewing.

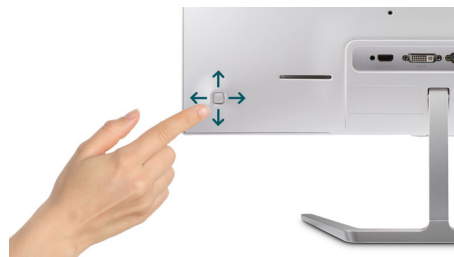
SmartImage Lite

SmartImage Lite is an exclusive, leading edge Philips technology that analyzes the content displayed on your screen. Based on a scenario you select, SmartImage Lite dynamically enhances the contrast, color saturation and sharpness of images and videos for ultimate display performance - all in real time with the press on a single button.

Ultra Narrow Bezel

Utilizing latest technology panels, the new Philips displays are designed with minimalistic approach by limiting the outer bezel thickness to about 2.5mm. Combined with in-panel black matrix strip of around 9mm, the overall bezel dimensions are reduced significantly allowing for minimal distractions and maximum viewing size. Especially suited for multi-display or tiling setup like gaming, graphics design and professional applications, the Ultra narrow bezel display gives you the feeling of using one large display.

EasySelect Menu Toggle Key



The discreetly placed EasySelect Menu Toggle Key allows you to make quick and easy adjustments to monitor settings in the On-Screen Display menu.

HDMI Ready



An HDMI-ready device has all the required hardware to accept High-Definition Multimedia Interface (HDMI) input. A HDMI cable enables high-quality digital video and audio all transmitted over a single cable from a PC or any number of AV sources (including set-top boxes, DVD players, A/V receivers and video cameras).

Mercury Free

Philips monitors with LED backlighting are free of Mercury content, one of the most toxic natural substances, which affects humans and animals. This reduces the environmental impact of the display throughout its life-cycle, from manufacturing to disposal.

Eco-friendly materials

"Philips is committed to use sustainable, eco-friendly materials across its monitor range. All body plastic parts, metal chassis parts and packing materials use 100% recyclable materials. In some selected models we utilize upto 65% post consumer recycled plastics. Strict adherence to RoHS standards ensure substantial reduction or elimination of toxic substances like Lead, for example. Mercury content in monitors with CCFL backlight has been reduced significantly, while eliminated in monitors with LED backlight completely. Visit Philips @ <http://www.asimpleswitch.com/global/> to learn more.



Specifications

Picture/Display

- LCD panel type: PLS LCD
- Backlight type: W-LED system
- Panel Size: 23.6 inch / 59.9 cm
- Effective viewing area: 521.28 (H) x 293.22 (V)
- Aspect ratio: 16:9
- Optimum resolution: 1920 x 1080 @ 60Hz
- Response time (typical): 7 GtG (BW) ms
- Brightness: 250 cd/m²
- Contrast ratio (typical): 1000:1
- SmartContrast: 20,000,000:1
- Pixel pitch: 0.272 x 0.272 mm
- Viewing angle: 178° (H) / 178° (V), @ C/R > 10
- Picture enhancement: SmartImage Lite
- Flicker-free
- Display colors: 16.7 M
- Scanning Frequency: 30 -83 kHz (H) / 56 -76 Hz (V)
- sRGB

Connectivity

- Signal Input: VGA (Analog), HDMI (digital, HDCP)
- Sync Input: Separate Sync, Sync on Green
- Audio (In/Out): HDMI audio out

Convenience

- User convenience: Power On/Off, Menu, 4:3 / Wide, Input, SmartImage lite
- OSD Languages: Brazil Portuguese, Czech, Dutch, English, Finnish, French, German, Greek, Hungarian, Italian, Japanese, Korean, Polish, Portuguese, Russian, Simplified Chinese, Spanish, Swedish, Traditional Chinese, Turkish, Ukrainian
- Other convenience: Kensington lock, VESA mount (100x100mm)
- Plug & Play Compatibility: DDC/CI, Mac OS X, sRGB, Windows 7, Windows 8

Stand

- Tilt: -5/20 degree

Power

- On mode: 16.94 W (typ.) (EnergyStar 6.0 test method)
- Standby mode: 0.5 W (typ.)
- Off mode: 0.3 W (typ.)
- Power LED indicator: Operation - White, Standby mode- White (blinking)
- Power supply: External, 100-240VAC, 50-60Hz

Dimensions

- Product with stand (mm): 535 x 422 x 213 mm
- Product without stand (mm): 535 x 323 x 60 mm
- Packaging in mm (WxHxD): 490 x 602 x 110 mm

Weight

- Product with stand (kg): 3.2 kg
- Product without stand (kg): 2.9 kg
- Product with packaging (kg): 4.9 kg

Operating conditions

- Temperature range (operation): 0°C to 40°C °C
- Temperature range (storage): -20°C to 60°C °C
- Relative humidity: 20%-80 %
- Altitude: Operation: +12,000ft (3,658m), Non-operation: +40,000ft (12,192m)
- MTBF: 50,000 (excluding backlight) hour(s)

Sustainability

- Environmental and energy: EPEAT Silver, EnergyStar 6.0, RoHS, Lead-free, Mercury Free
- Recyclable packaging material: 100 %

Compliance and standards

- Regulatory Approvals: EPA, CCC, CECP, WEEE

Cabinet

- Color: White
- Finish: Glossy



Issue date 2017-11-16

Version: 3.0.1

12 NC: 8670 001 32663
EAN: 69 51613 90935 5

© 2017 Koninklijke Philips N.V.
All Rights reserved.

Specifications are subject to change without notice.
Trademarks are the property of Koninklijke Philips N.V.
or their respective owners.

www.philips.com

* Smart response time is the optimum value from either GtG or GtG (BW) tests.

* HDMI cables vary depending on region and models.