



Philips Momentum  
Curved QHD LCD display  
with Ambiglow

## Momentum

27" (68.6 cm)  
Quad HD (2560 x 1440)



278M6FJMB

# Get in the moment

The new curved Momentum display with immersive Ambiglow lighting gets you in the moment. Fast action looks great on-screen with Quad HD resolution, AMD FreeSync and 144Hz fast refresh.

### Design to enhance the senses

- Curved display design for more immersive experience
- Ambiglow intensifies entertainment with halo of light

### Superb Picture Quality

- Crystalclear images with Quad HD 2560 x 1440 pixels
- MVA Display for wide viewing angles and deep contrast levels
- Ultra Wide-Color wider range of colors for a vivid picture

### Built for fast action

- Effortlessly smooth gameplay with AMD FreeSync™ technology
- 144Hz refresh rates for ultra-smooth, brilliant images
- SmartImage game mode optimized for gamers

### Get comfortable

- Height adjustment for ideal sitting position
- LowBlue Mode for easy on-the-eyes productivity
- Less eye fatigue with Flicker-free technology

# PHILIPS

Curved QHD LCD display with Ambiglow  
Momentum 27" (68.6 cm), Quad HD (2560 x 1440)

278M6FJMB/69

# Highlights

## Curved display design



Desktop monitors offer a personal user experience, which suits a curve design very well. The curved screen provides a pleasant yet subtle immersion effect, which focuses on you at the center of your desk.

## Ambiglow Technology



Ambiglow adds a new dimension to your viewing experience. The innovative Ambiglow technology enlarges the screen by creating an immersive halo of light. Its fast processor analyses the incoming image content and continuously adapts the color and brightness of the emitted light to match the image. User friendly options allow you to adjust the ambiance to your liking. Especially suited for watching movies, sports or playing games, Philips Ambiglow offers you a unique and immersive viewing experience.

## Crystalclear images

These latest Philips screens deliver Crystalclear, Quad HD 2560x1440 or 2560x1080 pixel images. Utilizing high performance panels with high density pixel count, enabled by high bandwidth sources like Displayport, HDMI, Dual link DVI, these new

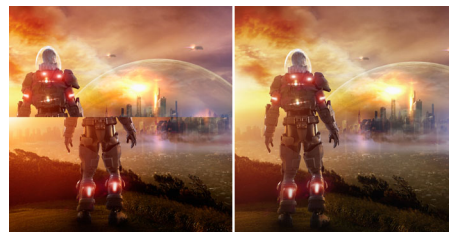
displays will make your images and graphics come alive. Whether you are demanding professional requiring extremely detailed information for CAD-CAM solutions, using 3D graphic applications or a financial wizard working on huge spreadsheets, Philips displays will give you Crystalclear images.

## Ultra Wide-Color Technology



Ultra Wide-Color Technology delivers a wider spectrum of colors for a more brilliant picture. Ultra Wide-Color wider "color gamut" produces more natural-looking greens, vivid reds and deeper blues. Bring, media entertainment, images, and even productivity more alive and vivid colors from Ultra Wide-Color Technology.

## Ultra-smooth gaming



AMD FreeSync™ OFF (simulation)

AMD FreeSync™ ON

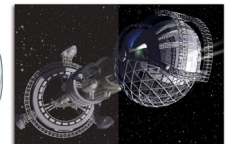
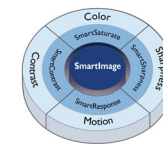
Gaming shouldn't be a choice between choppy gameplay or broken frames. With the new Philips monitor it doesn't have to be. Get fluid, artifact-free performance at virtually any framerate with AMD FreeSync™ technology, smooth quick refresh and ultra-fast response time.

## 144Hz Gaming



You play intense, competitive gaming. You demand display with lag free, ultra-smooth images. This Philips display redraws the screen image up-to 144 times per second, effectively 2.4x faster than a standard display. A lower frame rate can make enemies appear to jump from spot to spot on the screen, making them difficult targets to hit. With 144Hz frame rate, you get those critical missing images on the screen which shows enemy movement in ultra-smooth motion so you can easily target them. With ultra-low input lag and no screen tearing, this Philips display is your perfect gaming partner

## SmartImage Game mode



Without SmartImage<sup>GAME</sup>      With SmartImage<sup>GAME</sup>

The new Philips gaming display has quick access OSD fine tuned for gamers, offering you multiple options. "FPS" mode (First person shooting) improves dark themes in games, allowing you to see hidden objects in dark areas. "Racing" mode adapts display with fastest response time, high color, along with image adjustments. "RTS" mode (Real time strategy) has a special SmartFrame mode which enables highlighting of specific area and allows for size and image adjustments. Gamer 1 and Gamer 2 enable you to save personal customized settings based on different games, ensuring best performance.



# Specifications

## Picture/Display

- LCD panel type: MVA
- Backlight type: W-LED system
- Panel Size: 27 inch / 68.6 cm
- Effective viewing area: 596.74 (H) x 335.66 (V) - at a 1800R curvature\*
- Aspect ratio: 16:9
- Optimum resolution: 2560 x 1440 @ 144 Hz
- Response time (typical): 4 ms (Gray to Gray)\*
- Pixel Density: 109 PPI
- Brightness: 250 cd/m<sup>2</sup>
- Contrast ratio (typical): 3000:1
- SmartContrast: 50,000,000:1
- Pixel pitch: 0.233 x 0.233 mm
- Viewing angle: 178° (H) / 178° (V), @ C/R > 10
- Flicker-free
- Picture enhancement: SmartImage game
- Color gamut (typical): NTSC 101.6%\*, sRGB 120%\*
- Display colors: 16.7 M
- Scanning Frequency: 70 - 214 kHz (H) / 48 - 144 Hz (V)
- sRGB

## Connectivity

- Signal Input: VGA (Analog), DisplayPort 1.2 x 2, HDMI 1.4 x 1, HDMI 2.0 x 1
- Sync Input: Separate Sync, Sync on Green
- Audio (In/Out): Headphone out, PC audio-in

## Convenience

- Built-in Speakers: 5 W x 2
- User convenience: Menu/OK, Input/Up, SmartImage Game/Return, SmartSize/Down, Power On/Off
- Control software: SmartControl
- OSD Languages: Brazil Portuguese, Czech, Dutch, English, Finnish, French, German, Greek, Hungarian, Italian, Japanese, Korean, Polish, Portuguese, Russian, Simplified Chinese, Spanish, Swedish, Traditional Chinese, Turkish, Ukrainian
- Other convenience: FreeSync, Ambiglow, LowBlue Mode, Kensington lock, VESA mount (100x100mm)
- Plug & Play Compatibility: DDC/CI, Mac OS X,

sRGB, Windows 10 / 8.1 / 8 / 7

## Stand

- Height adjustment: 130 mm
- Tilt: -5/20 degree

## Power

- On mode: 40.54 W (typ.)
- Standby mode: 0.5 W (typ.)
- Off mode: 0.3 W (typ.)
- Power LED indicator: Operation - White, Standby mode- White (blinking)
- Power supply: External, 100-240VAC, 50-60Hz

## Dimensions

- Product with stand(max height): 612 x 416 x 286 mm
- Product without stand (mm): 612 x 369 x 52 mm
- Packaging in mm (WxHxD): 694 x 520 x 358 mm

## Weight

- Product with stand (kg): 6.35 kg
- Product without stand (kg): 4.58 kg
- Product with packaging (kg): 11.34 kg

## Operating conditions

- Temperature range (operation): 0 to 40 °C
- Temperature range (storage): -20 to 60 °C
- Relative humidity: 20%-80 %
- Altitude: Operation: +12,000ft (3,658m), Non-operation: +40,000ft (12,192m)
- MTBF: 50,000 hrs (excluding backlight) hour(s)

## Sustainability

- Environmental and energy: RoHS, Lead-free, Mercury Free
- Recyclable packaging material: 100 %

## Compliance and standards

- Regulatory Approvals: CE Mark, FCC Class B, CU-EAC, RCM, WEEE

## Cabinet

- Color: Black
- Finish: Glossy / Textured



Issue date 2018-01-07

Version: 1.0.1

12 NC: 8670 001 53164  
EAN: 87 12581 75179 1

© 2018 Koninklijke Philips N.V.  
All Rights reserved.

Specifications are subject to change without notice.  
Trademarks are the property of Koninklijke Philips N.V.  
or their respective owners.

[www.philips.com](http://www.philips.com)

\* This Philips display is capable of achieving upto 144Hz refresh rates thru its HDMI 2.0 and DisplayPort connector. Please ensure your graphics card is capable of 144Hz refresh rates and updated with the latest driver.

\* For any questions related to 144Hz performance please refer to your card vendor directly.

\* 2015 Advanced Micro Devices, Inc. All rights reserved. AMD, the AMD Arrow logo, FreeSync and combinations thereof are trademarks of Advanced Micro Devices, Inc. Other names are for informational purposes only and may be trademarks of their respective owners.

\* Radius of the arc of the display curvature in mm

\* Response time value equal to SmartResponse

\* NTSC Area based on CIE1976

\* sRGB Area based on CIE 1931