



Multi Language Quick Guide

Wireless Cloud Network Camera



Conceptronic Wireless Cloud Network Camera

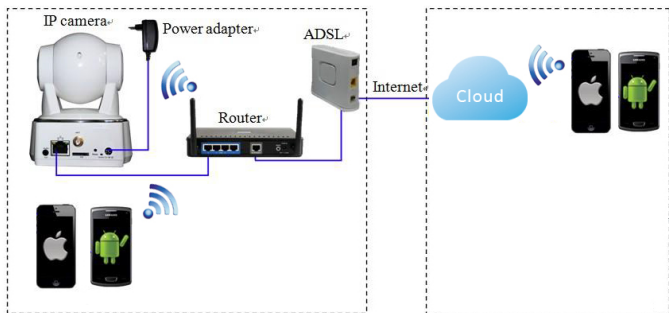
1. Package contents

The following items are present in the package of the Conceptronic Wireless Cloud Network Camera:

- Wireless network Camera
- Network Cables
- Mounting bracket
- Power Adaptor
- Antenna
- QIG x 1
- Software CD x 1

2. Installation & usage

Setup



- Get ready for camera, network cable and attached power adapter.
- Connect your camera into Router's Ethernet LAN port.
- Connect the power adapter into your camera.

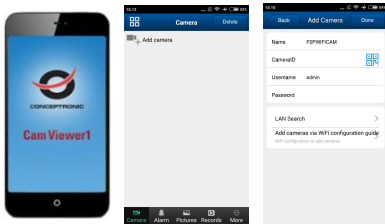
Note: Please use the power adapter attached with camera, in order to avoid damage the camera.

“Cam Viewer1” P2P Quick Application Step



Android / iOS Phone Application

- ◆ Search and download “Cam Viewer1” from Google Play or APP Store.
- ◆ Install “Cam Viewer1”
- ◆ Add DID number of the camera



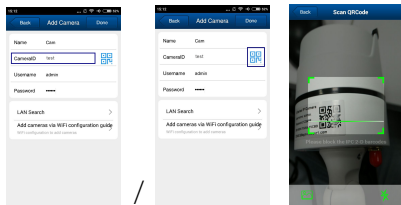
There are three way to add device, that is add manually, scan ID to add and search in LAN to add.

☆ Scan ID/QR and search in LAN to Add as below.

- a) Search in LAN to Add
- b) Scan ID/QR to Add



Search in LAN to Add



Scan ID/QR to Add

- The default username is “admin”; password is “123456”.

Enjoy the use of your Conceptronic Wireless Cloud Network Camera!

Conceptronic Wireless Cloud Network Camera

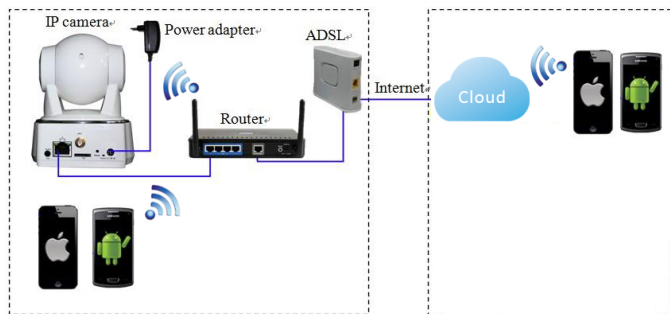
1. Packungsinhalt

Folgende Teile befinden sich in der Verpackung von Conceptronic Wireless Cloud Network Camera:

- Wireless network Camera
- Network Cables
- Mounting bracket
- Power Adaptor
- Antenna
- QIG x 1
- Software CD x 1

2. Installation & Verwendung

Einrichtung



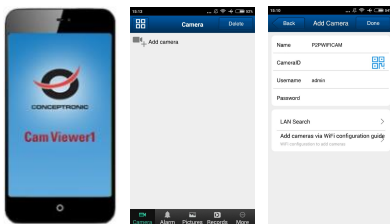
- Kamera, Netzkabel und angeschlossenes Netzteil vorbereiten.
 - Ihre Kamera am Ethernet-LAN-Port des Routers anschließen.
 - Das Netzteil mit Ihrer Kamera verbinden.
- Hinweis:** Bitte nutzen Sie zur Vermeidung von Kameraschäden das mit der Kamera verbundene Netzteil.

„Cam Viewer1“-P2P-Schnellapplikation



Android- / iOS-Phone-Applikation

- ◆ „Cam Viewer1“ im Google Play Store oder Apple App Store suchen und herunterladen.
- ◆ „Cam Viewer1“ installieren
- ◆ DID-Nummer der Kamera hinzufügen



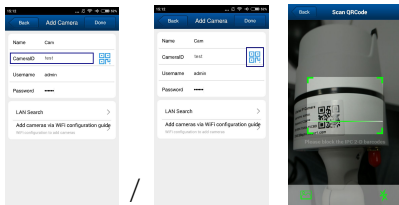
Es gibt drei Möglichkeiten zum Hinzufügen eines Gerätes: Manuell hinzufügen, ID scannen und im LAN suchen.

☆ ID/QR scannen und zum Hinzufügen wie nachstehend beschrieben im LAN suchen.

- a) Zum Hinzufügen im LAN suchen
- b) Zum Hinzufügen ID/QR scannen



Zum Hinzufügen im LAN suchen



Zum Hinzufügen ID/QR scannen

- Der Standardnutzernamen lautet „admin“, das Kennwort ist „123456“.

Viel Spaß mit Ihrem Conceptronic Wireless Cloud Network Camera!

Conceptronic Wireless Cloud Network Camera

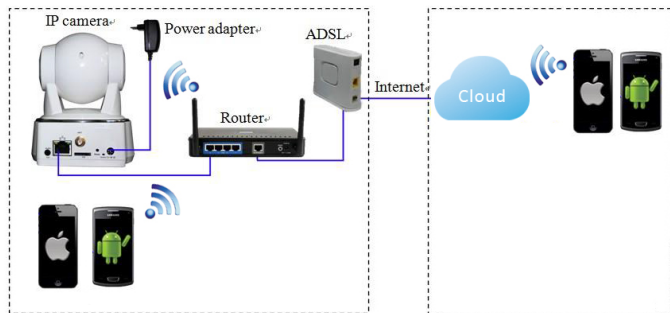
1. Contenu du Coffret

Les éléments suivants se trouvent dans l'emballage de votre Conceptronic Wireless Cloud Network Camera:

- Wireless network Camera
- Network Cables
- Mounting bracket
- Power Adaptor
- Antenna
- QIG x 1
- Software CD x 1

2. Installation & Utilisation

Installation



- Préparez la caméra, le câble réseau et l'adaptateur secteur fournis.
- Connectez votre caméra sur le port Ethernet LAN du routeur.
- Branchez l'adaptateur secteur sur votre caméra.

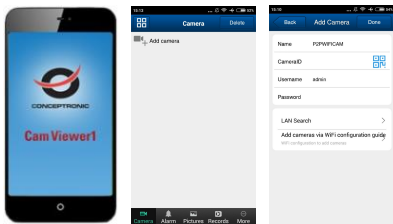
Remarque : Veuillez utiliser l'adaptateur secteur fourni avec la caméra afin d'éviter de l'endommager.

Étapes rapides de l'application P2P « Cam Viewer1 »



Application pour téléphone Android / iOS

- ◆ Recherchez et téléchargez « Cam Viewer1 » sur Google Play ou sur App Store.
- ◆ Installez « Cam Viewer1 »
- ◆ Ajoutez le numéro DID de la caméra



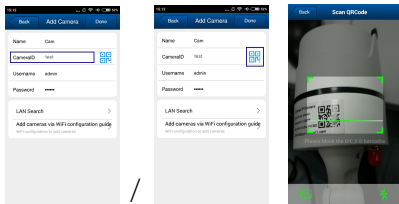
Il existe trois façons d'ajouter un appareil, à savoir l'ajouter manuellement, rechercher un identifiant à ajouter et faire une recherche réseau LAN pour l'ajouter.

☆ **Recherchez l'ID/QR et faites une recherche réseau LAN pour l'ajouter comme indiqué ci-dessous.**

- Faites une recherche réseau LAN pour l'ajouter
- Recherchez l'ID/QR pour l'ajouter



Faites une recherche réseau LAN pour l'ajouter



Recherchez l'ID/QR pour l'ajouter

- Par défaut, le nom d'utilisateur est “admin” et le mot de passe est “123456”.

Profitez de votre Conceptronic Wireless Cloud Network Camera !

Conceptronic Wireless Cloud Network Camera

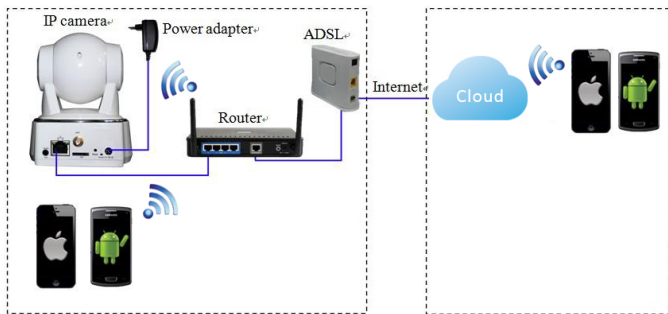
1. Contenido del paquete

El paquete contiene los siguientes artículos de Conceptronic Wireless Cloud Network Camera:

- Wireless network Camera
- Network Cables
- Mounting bracket
- Power Adaptor
- Antenna
- QJG x 1
- Software CD x 1

2. Instalación & Utilización

Configuración



- Prepare la cámara, el cable de red y el adaptador de alimentación conectado.
- Conecte la cámara al puerto LAN Ethernet del enrutador.
- Conecte el adaptador de alimentación a la cámara.

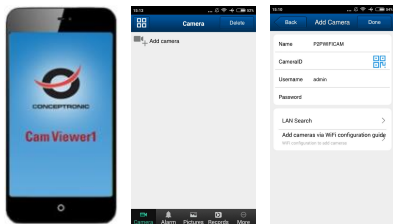
Nota: Para evitar daños en la cámara, utilice el adaptador de alimentación conectado a dicha cámara.

Pasos rápidos de la aplicación P2P “Cam Viewer1”



Aplicación para teléfonos Android e iOS

- ◆ Busque y descargue “Cam Viewer1” desde Google Play o APP Store.
- ◆ Instale “Cam Viewer1”
- ◆ Agregue el número DID de la cámara



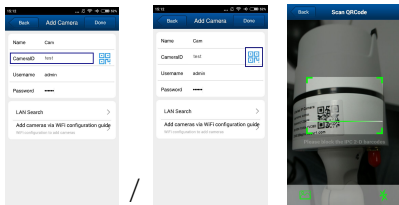
Hay varias formas de agregar un dispositivo: manualmente, mediante el escaneo del identificador y mediante la búsqueda en LAN.

☆ Escanear el identificador o código QR, y buscar en la red LAN para agregar, tal y como se muestra a continuación.

- Buscar en la red LAN para agregar
- Escanear el identificador o el código QR para agregar



Buscar en la red LAN para agregar



Escanear el identificador o el código QR para agregar

- El nombre de usuario predeterminado es “admin”; la contraseña es “123456”.

Disfrute del uso de su Conceptronic Wireless Cloud Network Camera.

Conceptronic Wireless Cloud Network Camera

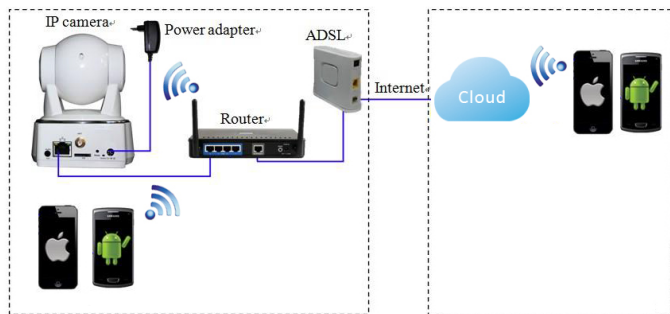
1. Pakkens indhold

La confezione di Conceptronic Wireless Cloud Network Camera contiene gli elementi che seguono:

- Wireless network Camera
- Network Cables
- Mounting bracket
- Power Adaptor
- Antenna
- QIG x 1
- Software CD x 1

2. Installazione & Uso

Configurazione



- Preparare videocamera, cavo di rete e adattatore di alimentazione in dotazione.
- Collegare la videocamera alla porta LAN Ethernet del router.
- Collegare l'adattatore di alimentazione alla videocamera.

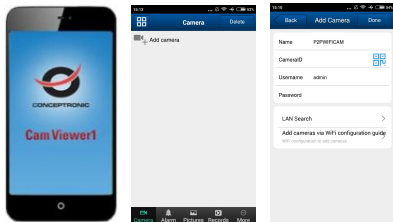
Nota: Utilizzare l'adattatore di alimentazione collegato alla videocamera per evitare danni alla videocamera.

Procedura rapida dell'applicazione P2P “Cam Viewer1”



Applicazione per telefono Android / iOS Phone

- ◆ Cercare e scaricare “Cam Viewer1” da Google Play o APP Store.
- ◆ Installare “Cam Viewer1”
- ◆ Aggiungere il numero della videocamera



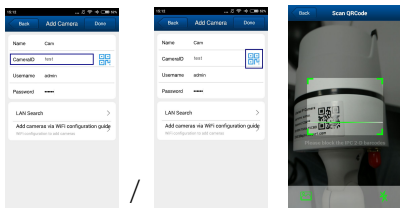
Vi sono tre metodi per aggiungere il dispositivo, ovvero manualmente, tramite scansione dell'ID da aggiungere o tramite ricerca nella LAN da aggiungere.

☆ **Effettuare la scansione di ID/QR e la ricerca nella LAN per aggiungere come segue.**

- a) Cercare nella LAN per aggiungere
- b) Effettuare la scansione di ID/QR per aggiungere



Cercare nella LAN per aggiungere



Effettuare la scansione di ID/QR per aggiungere

- Il nome utente predefinito è “admin” e la password è “123456”.

Godetevi l'uso di Conceptronic Wireless Cloud Network Camera!

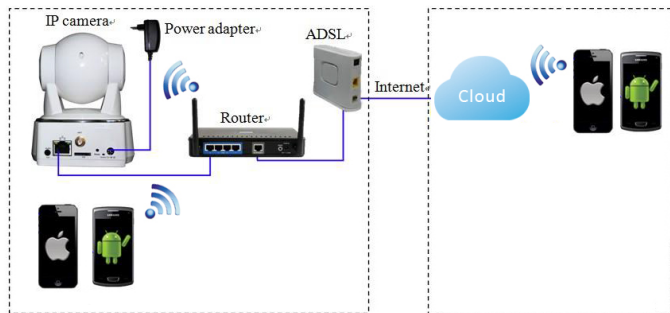
1. Conteúdo da embalagem

A embalagem do Conceptronic Wireless Cloud Network Camera contém os seguintes itens:

- Wireless network Camera
- Network Cables
- Mounting bracket
- Power Adaptor
- Antenna
- QIG x 1
- Software CD x 1

2. Instalação & Utilização

Configuração



- Prepare a câmera, o cabo de rede e o transformador incluído.
- Ligue a câmera à porta LAN Ethernet do router.
- Ligue o transformador à câmera.

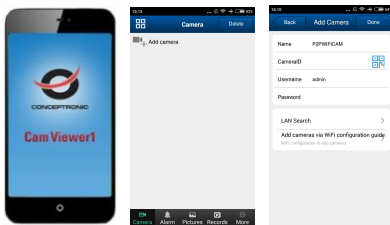
Nota: Utilize o transformador incluído com a câmera para evitar causar danos à mesma.

Configuração rápida da aplicação P2P "Cam Viewer1"



Aplicação para telemóveis Android / iOS

- ◆ Procure e transfira a aplicação "Cam Viewer1" no Google Play ou na APP Store.
- ◆ Instale a aplicação "Cam Viewer1"
- ◆ Adicione o número DID da câmara



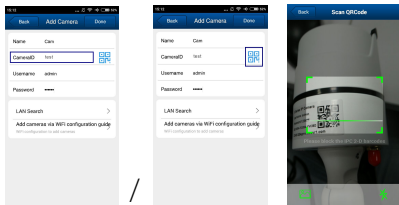
Existem três formas de adicionar um dispositivo: adicionar manualmente, efetuar a leitura da ID para adicionar e procurar na LAN para adicionar.

☆ **Efetuar a leitura da ID/QR e procurar na LAN para Adicionar tal como ilustrado abaixo.**

- Procurar na LAN para Adicionar
- Efetuar a leitura da ID/QR para Adicionar



Procurar na LAN para Adicionar



Efetuar a leitura da ID/QR para Adicionar

- The default username is “admin”; password is “123456”.

Desfrute do seu Conceptronic Wireless Cloud Network Camera!