

A close-up photograph of a man with a beard using a black and blue Philips hair clipper on his hair. He is wearing a white t-shirt and a striped towel. The background is blurred, showing a bathroom setting.

PHILIPS

Hair clipper

Hairclipper series 3000

Self-sharpening stainless steel blades

13 length settings

Corded use

HC3505/15

Fast, even haircut

Faster hair clipping without clogging

The Hair Clipper 3000 by Philips gives you a fast, even haircut. The device's 13 length settings, Trim-n-Flow technology and DualCut technology lets you quickly achieve an even finish.

Easy to use

- Mains powered for constant performance during use
- Quick-release, washable blades
- Ergonomic Design with a Comfortable Grip

Performance

- Trim-and-Flow Tech for a Hassle-Free Perfect Haircut
- Maximum precision with Philips DualCut system

Precise length control

- Adjust hair length from 0.5 mm to 23 mm easily

Built to last

- Maintenance-Free Blades: No Oiling Needed, Ever
- Unlock Longer Battery Life via DuraPower's Optimised Design
- Self-sharpening steel blades, no oil required
- 2-Year Global Warranty for Purchase Protection

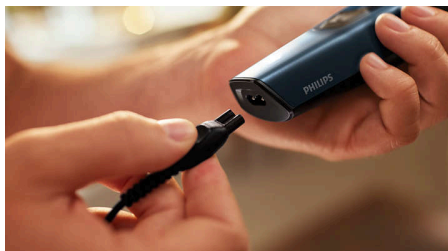
Hairclipper series 3000

Hair clipper

HC3505/15

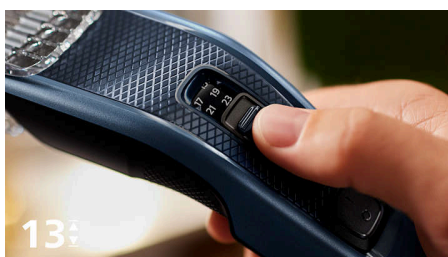
Highlights

Constant corded power



The 1.8 m long power cord provides constant power.

13 Length Settings with the Effortless Slide Button



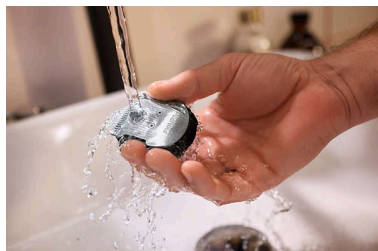
Customise your hair length precisely with ease. Choose from 12 settings between 1 mm to 23 mm in 2 mm increments. For a closer trim, simply remove the comb for a precise 0.5 mm cut.

Self-sharpening stainless steel blades



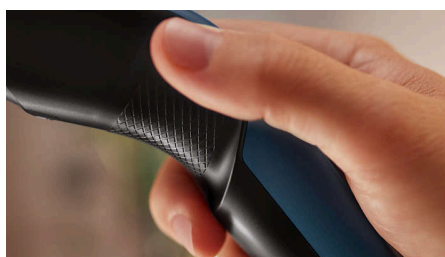
Looking good has never been easier. Our hair clippers boast self-sharpening blades that are incredibly long-lasting, ensuring precision grooming from day one to year five and beyond.

Washable blades



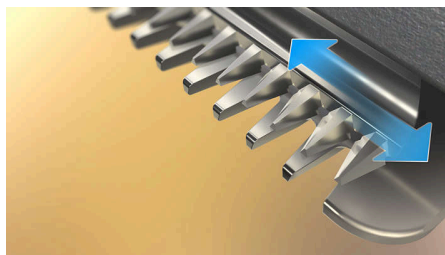
Effortlessly clean your electric hair clippers. Just click open the head to release and clean the blades

Comfortable grip



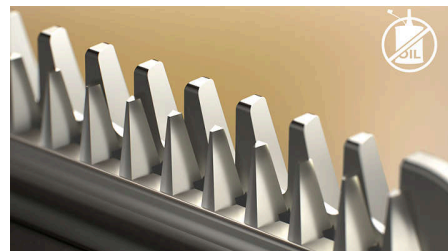
Philips clippers feature a textured grip for easy handling, ensuring that you can cut your hair with control and comfort.

DualCut Technology



Enjoy your desired look with precision. Philips DualCut technology features a double blade system designed to maintain day-one sharpness, consistently delivering equally sharp results, every time.

Zero maintenance



Experience clipping power that's easy to maintain — Philips' blades never need oiling.

Built to last



A grooming product built to last: the warranty offers coverage for up to 5 years, including a 2-year standard global warranty, with an additional 3 years available upon registering the device within 90 days of purchase.

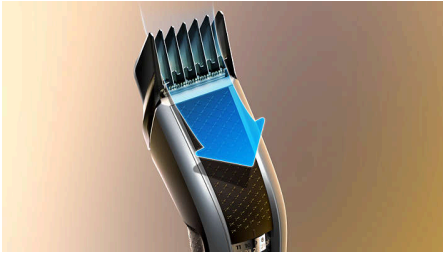
Hairclipper series 3000

Hair clipper

HC3505/15

Highlights

Trim-and-Flow Technology



Effortlessly achieve your perfect haircut. Our innovative comb is designed to prevent hair from getting stuck or tangled, ensuring a smooth cutting experience from start to finish.

DuraPower



A device you can always rely on for a great look. DuraPower technology protects the motor and battery from overworking, effectively extending the clipper's lifespan.

Hairclipper series 3000

Hair clipper

HC3505/15

Specifications

Accessories

Maintenance: Cleaning brush

Comb: Adjustable hair comb

Power

Automatic voltage: 100-240 V

Design

Handle: Ergonomic grip and handling

Service

Up to 5-year guarantee

Cutting system

Cutter width: 41 mm

Trim-n-Flow technology

Cutting element: Stainless steel blades

Number of length settings: 13

Range of length settings: From 0.5 to 23 mm

Precision (size of steps): By 2 mm

Ease of use

Cleaning: Removable cutter, Washable blades

Maintenance-free: No oil needed

Operation: Corded use only

