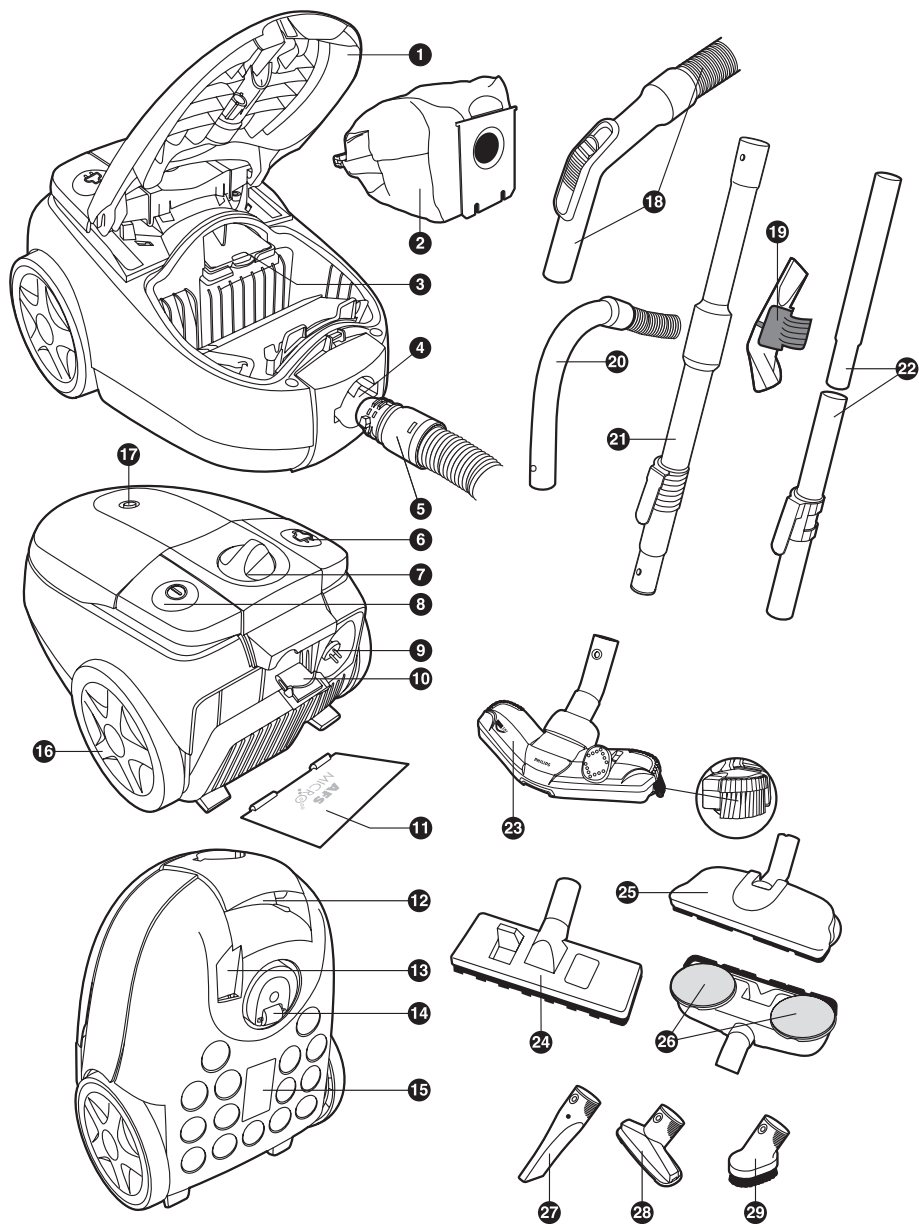


FC8398 - FC8390



PHILIPS





FC8398-FC8390

ENGLISH 6

简体中文 10

General description (Fig. 1)

- 1 Dust cover
- 2 Dustbag
- 3 Motor Protection Filter
- 4 Hose connection opening
- 5 Hose connector
- 6 Cord rewind button
- 7 Suction power knob
- 8 On/off button
- 9 Plug
- 10 Filter grille
- 11 AFS Filter
- 12 Handgrip
- 13 Storage slot
- 14 Swivel wheel
- 15 Type plate
- 16 Rear wheels
- 17 Dustbag full indicator
- 18 Handgrip of hose with suction power slide (FC8392)
- 19 Accessory clip
- 20 Handgrip of hose (FC8398/8396)
- 21 Telescopic tube (FC8398)
- 22 Tubes (FC8396/8392)
- 23 Tri-Active nozzle (FC8398)
- 24 Combi nozzle (FC8396/8392)
- 25 Twist & Clean nozzle (FC8396)
- 26 Twist & Clean polishing pads
- 27 Crevice tool
- 28 Small nozzle
- 29 Small brush (FC8398)

Important

Read this user manual carefully before you use the appliance and save it for future reference.

- Check if the voltage indicated on the appliance corresponds to the local mains voltage before you connect the appliance.
- Do not use the appliance if the plug, the cord or the appliance itself is damaged.
- If the mains cord of this appliance is damaged, you must have it replaced by Philips, a service centre authorised by Philips or similarly qualified persons in order to avoid a hazard.
- Keep the appliance out of the reach of children.
- Never suck up water or any other liquid. Never suck up flammable substances and do not suck up ashes until they are cold.
- Do not point the hose, the tube or any other accessory at the eyes or ears nor put it in your mouth when it is connected to the vacuum cleaner and the vacuum cleaner is switched on.
- When you use the appliance to vacuum ashes, fine sand, lime, cement dust and similar substances, the pores of the paper dustbag become clogged. As a result, the dustbag-full indicator will indicate that the dustbag is full. Replace the dustbag, even if it is not full yet.
- Never use the appliance without the Motor Protection Filter. This damages the motor and shortens the life of the appliance.
- Only use Philips s-bag™ double-layer paper dustbags or the reusable dustbag provided.

Electromagnetic fields (EMF)

This Philips appliance complies with all standards regarding electromagnetic fields (EMF). If handled properly and according to the instructions in this user manual, the appliance is safe to use based on scientific evidence available today.

Preparing for use

Hose

- 1** To connect the hose, push it into the appliance and turn it clockwise (Fig. 2).
To disconnect the hose, turn it anticlockwise and pull it out of the appliance.
- 2** To connect the tubes to each other and to the handgrip of the hose, insert the narrow section into the wider section while turning a little. The tube with the clip is the lower tube (Fig. 3).

You can connect the accessories in the same way.

Disconnect the accessories and tubes by pulling them and turning them a little.

Telescopic tube (specific types only)

- 1** Adjust the tube to the length you find most comfortable during vacuum cleaning. (Fig. 4)

Combination nozzle

The combination nozzle can be used on either carpets (with the brush strips folded in) or hard floors (with the brush strips folded out):

- 1** To clean hard floors, push the rocker switch on top of the combination nozzle with your foot. The brush strips come out of the nozzle housing. (Fig. 5)
- 2** To clean carpets, push the rocker switch on the other side to make the brush strips disappear into the housing. (Fig. 6)

Accessory clip

The accessory clip can simply be snapped onto the tube.

- The crevice tool and the small nozzle (specific types only) can be snapped onto the clip (Fig. 7).

Using the appliance

Vacuuming

- 1** Pull the cord out of the appliance and put the mains plug in the wall socket.
 - 2** Push the on/off button on top of the appliance with your foot to switch on the appliance.
- You can carry the vacuum cleaner by the handle at the front of the appliance.

Adjusting suction power

You can adjust the suction power by means of:

- the slide on the handgrip, or (Fig. 8)
- the suction power knob (specific types only) (Fig. 9).

Storage

- 1** Switch off appliance and remove the mains plug from the wall socket.
- 2** Press the cord rewind button to rewind the mains cord.
- 3** Put the appliance in upright position and attach the lower tube to the appliance by means of the clip (Fig. 10).

Replacement

Replacing the dustbag

Replace the dustbag as soon as the dustbag-full indicator has changed colour permanently.

Always unplug the appliance before you replace the dustbag.

- 1** Open the dustbag compartment cover (Fig. 11).
- 2** Push the dustbag holder backwards (Fig. 12).
- 3** Pull the cardboard tag upwards to remove the full dustbag from the holder. The dustbag is sealed automatically (Fig. 13).
- 4** Slide the cardboard front of the new dustbag into the two grooves of the dustbag holder. Press it down as far as possible (Fig. 14).
- 5** Pull the dustbag holder forwards ('click') and close the dustbag compartment cover. (Fig. 15)

Note: If you have not inserted a dustbag, you cannot close the dustbag compartment cover.

Philips s-bag™ paper dustbags are available under type number FC8021 .

Reusable dustbag

If provided, you can use the reusable dustbag instead of paper dustbags. The reusable dustbag can be used and emptied repeatedly.

To remove and insert the reusable dustbag, simply follow the instructions for replacing paper dustbags.

To empty the reusable dustbag:

- 1** Remove the clip by sliding it off the dustbag sideways.
- 2** Shake out the contents into a dustbin.
- 3** Close the dustbag by sliding the clip back onto the bottom edge of the dustbag.

Philips reusable dustbags are available under type number 4341 004 92090.

Replacing filters

Always unplug the appliance before you replace the filters.

Motor Protection Filter

Replace the Motor Protection Filter once a year.

- 1** Open the cover and remove the filter.
- 2** Insert a new filter into the holder with the white side pointing upwards (Fig. 16).

AFS Micro Filter

Replace the AFS Micro Filter every 6 months.

- 1** Open the grille (1) at the back of the appliance and remove it (2) (Fig. 17).
- 2** Remove the old filter. Place the sides and the bottom edge of the new filter properly behind the 3 ridges of the holder on the inside of the grille (Fig. 18).
- 3** Reattach the grille to the vacuum cleaner. First hook the bottom edge of the grille into the appliance (1) and then push the grille towards the appliance until it snaps home (2) (Fig. 19).

Two AFS Micro Filters and one Motor Protection Filter are available under type number FC8032.

Environment

- Do not throw away the appliance with the normal household waste at the end of its life, but hand it in at an official collection point for recycling. By doing this, you help to preserve the environment (Fig. 20).

Guarantee and service

If you need information or if you have a problem, please visit the Philips website at www.philips.com or contact the Philips Customer Care Centre in your country (you find its phone number in the worldwide guarantee leaflet). If there is no Customer Care Centre in your country, go to your local Philips dealer or contact the Service Department of Philips Domestic appliances and Personal Care BV.

Troubleshooting

- 1 The suction power is insufficient.
 - Make sure the suction power knob is in maximum position (specific types only).
 - Make sure the slide on the handgrip is closed.
 - Perhaps the dustbag is full. Replace the dustbag.
 - Perhaps the filters are dirty. Replace the filters.
 - The nozzle, tube or hose may be blocked up. To remove the obstruction, disconnect the blocked-up item and connect it (as far as possible) the other way around. Switch on the vacuum cleaner to force the air through the blocked-up item in opposite direction (Fig. 21).

一般说明 (图 1)

- 1 防尘罩
- 2 集尘袋
- 3 马达保护滤网
- 4 软管连接孔
- 5 软管接口
- 6 电源线回卷按钮
- 7 吸力控制旋钮
- 8 开/关按钮
- 9 插头
- 10 过滤器栅格
- 11 AFS 滤网
- 12 手柄
- 13 插槽
- 14 转轮
- 15 型号牌
- 16 后轮
- 17 尘量显示器
- 18 带吸力控制滑片的软管握把 (FC8392)
- 19 附件夹
- 20 软管握把 (FC8398/8396)
- 21 伸缩管 (FC8398)
- 22 硬管 (FC8396/8392)
- 23 Tri-Active 全方位清洁吸尘嘴 (FC8398)
- 24 组合吸嘴 (FC8396/8392)
- 25 洁旋风吸尘嘴 (FC8396)
- 26 洁旋风吸尘嘴微细纤维软垫
- 27 缝隙工具
- 28 小号吸嘴
- 29 小号毛刷 (FC8398)

注意事项

使用产品之前，请仔细阅读本用户手册，并妥善保管以供日后参考。

- 在将产品连接电源之前，请先检查产品所标电压与当地的供电电压是否相符。
- 如果插头、电源线或产品本身受损，请勿再使用本产品。
- 如果产品的电源线损坏，为避免危险，必须由制造厂或其维修部或厂方认可的专职人员来更换。
- 请将产品放置在儿童接触不到的地方。
- 切勿吸取水或其它液体。切勿吸取易燃物质，并且不要吸取未冷却的灰烬。
- 当连接到真空吸尘器并且真空吸尘器已打开时，请勿将软管、硬管或任何其它附件指向眼睛或耳朵，也不要放在口中。

- 在使用本产品吸收灰尘、细沙、石灰、水泥灰和类似的物质时，纸质集尘袋的袋孔可能发生阻塞。因此，集尘袋已满指示灯将显示集尘袋已满。这时，请更换集尘袋，即使集尘袋并未装满。
- 切勿在没有马达保护滤网的情况下使用本产品。这会损坏马达并缩短产品的使用寿命。
- 只能使用飞利浦的 s-bag™ 双层纸制集尘袋或循环使用集尘袋。

电磁场 (EMF)

这款飞利浦产品符合关于电磁场 (EMF) 的相关标准。据目前的科学证明，如果正确使用并按照本用户手册中的说明进行操作，本产品是安全的。

使用准备

软管

- 1** 要将软管连接，将软管推入吸尘器并以顺时针方向旋转即可。(图 2)
要将软管从吸尘器上拆下，请将管端逆时针方向转动，并拉出软管。
- 2** 要将硬管互相连接起来，并连接到软管的手柄上，可以将较窄的一头插入较宽的一头，并稍稍旋转。带夹子的硬管应处于较低位置。(图 3)
其他附件也可以同样连接。
拉出硬管并稍稍旋转，即可断开附件和硬管。

伸缩管（仅限于特定机型）

- 1** 将硬管调整到吸尘过程中感觉最舒适的长度。(图 4)

组合吸嘴

组合吸嘴既能在地毯上使用（刷条内翻）也能在坚硬的地板上使用（刷条外翻）：

- 1** 要清洁硬地板，请用脚推动组合吸嘴上的刷毛转换块。刷条将从吸嘴外壳中伸出来。(图 5)
- 2** 要清洁地毯，请用脚按动转换块的另一面，使刷条缩入吸嘴中。(图 6)

附件夹

附件夹可简单地扣合在硬管上。

- 缝隙工具和小号吸嘴（仅限于特定机型）可扣合在附件夹上。(图 7)

使用本产品

吸尘

- 1** 将电源线从吸尘器中拉出，并将电源插头插入插座。
- 2** 用脚推动产品上的 on/off（开/关）按钮来开启电源。
 - 您可以手握前方的把手提起吸尘器。

调整吸力

您可以通过以下方式调整吸力：

- 通过握把上的滑动开关即可调整吸力，或 (图 8)
- 通过吸力控制旋钮调整吸力（仅限于特定机型）。(图 9)

存放

- 1 关闭吸尘器的电源，从插座中拔下电源插头。
- 2 按下电源线回卷按钮将电线回卷到吸尘器中。
- 3 将吸尘器直立起来并利用夹子将下侧硬管装在吸尘器上。(图 10)

更换

更换集尘袋

一旦集尘袋已满且指示灯持久改变颜色，应立即更换集尘袋。

更换集尘袋前，切记拔下电器插头。

- 1 打开集尘袋仓盖。(图 11)
- 2 将集尘袋固定架向后推。(图 12)
- 3 向上拉起纸板片将装满灰尘的集尘袋取掉。集尘袋会自动封闭。(图 13)
- 4 将新的集尘袋的纸板片套入集尘袋固定架上的两个狭槽中。尽量向下按。(图 14)
- 5 向前拉动集尘袋固定架(听到咔嚓声)并关闭集尘袋仓盖。(图 15)

注：如果尚未插入集尘袋，将无法关闭集尘袋仓盖。

飞利浦 s-bag™ 纸质集尘袋的供应型号为 FC8021。

循环使用集尘袋

如果有随附的循环使用的集尘袋，就可以不用纸制集尘袋。循环使用的集尘袋可于灰尘倒空后重复使用。

拆下和安装可循环使用集尘袋的方法，仅按照更换纸制集尘袋的方法即可。

要倒空可循环使用集尘袋：

- 1 将夹子从集尘袋侧面滑下，取下夹子。
- 2 通过摇动倒出里面的积尘。
- 3 将夹子安装回集尘袋下端，封闭集尘袋。
飞利浦可循环使用集尘袋的供应型号为 4341 004 92090。

更换过滤网

更换过滤网前，切记拔下电器插头。

马达保护滤网

每年更换一次马达保护滤网。

- 1 打开盖子并拆下滤网。
- 2 把一张新滤网插入支架，白色的一边朝上。(图 16)

AFS 微尘过滤网

每 6 个月更换一次 AFS 微尘过滤网。

- 1 在电器的后部打开栅栏 (1)，并拆下 (2)。(图 17)
 - 2 拆下旧滤网。把新滤网的侧边和底边正确地装入栅栏内侧固定架的 3 个凸缘上。(图 18)
 - 3 将滤网格栅重新装入真空吸尘器。首先将滤网格栅的底边钩进产品 (1)，向产品的方向推动格栅直到其扣合到位 (2)。(图 19)
- 两个 AFS 微尘过滤网和一个马达保护滤网的供应型号 FC8032。

环保

- 弃置产品时，请不要将其与一般生活垃圾堆放在一起；应将其交给官方指定的回收中心。这样做有利于环保。(图 20)

保修和服务

如果您需要详细信息或有任何问题，请浏览飞利浦网站，地址为 www.philips.com。您也可以与贵国的飞利浦顾客服务中心联系（您可以从全球保修卡中找到电话号码）。如果贵国没有飞利浦顾客服务中心，请与当地的飞利浦经销商或与飞利浦家庭小电器的维修中心联系。

故障种类和处理方法

- 1 吸力不足。
 - 确保吸力控制旋钮在最大位置（仅限于特定机型）。
 - 确保手柄上的滑动开关已关闭。
 - 可能集尘袋已满。请更换集尘袋。
 - 可能过滤网脏了。请更换过滤网。
 - 检查吸嘴、硬管、软管是否被阻塞。要清除阻塞物，请将阻塞的部分拆下，并将它反向连接（尽可能离远一些）。打开吸尘器的电源，强迫气流反方向通过阻塞的部位。(图 21)

产品型号 / 规格

型号	额定功率	额定电压 / 频率
FC8392 (有调)	1200W	220V ~ 50Hz
FC8396 (有调)	1300W	220V ~ 50Hz
FC8398 (有调)	1300W	220V ~ 50Hz

产品附件名称及数量

名称 / 数量	FC8392	FC8396	FC8398
软管	1	1	1
吸管	金属吸管	镀铬吸管	伸缩吸管
缝隙吸嘴	1	1	1
毛刷	—	—	1
小号吸嘴	1	1	1
附件夹	1	1	1
地板/地毯两用吸尘嘴	1	1	—
洁旋风吸尘嘴	—	1	—
全方位清洁吸尘嘴	—	—	1
循环使用集尘袋	1	1	1
Sydney+(双层纸制集尘袋)	1	1	1

注意事项

维护和保养

- 除说明书上注明允许使用者进行维护和保养的项目外，其他的维护和保养的项目必须由飞利浦指定的维修中心进行。
- 切勿让儿童使用此产品。
- 当使用完毕或离开时，要切断电源。
- 当吸尘器与吸尘软管连接，并接上电源后，切勿将吸尘软管靠近眼睛、耳朵或放进口中。
- 对产品在使用时如出现异常的情况（如噪音、气味、温度升高、烟雾等）应立刻切断电源，停止继续使用。
- 使用者可联系飞利浦全国顾客免费服务热线、当地的飞利浦办事处或飞利浦维修中心进行咨询。

PHILIPS

产品：飞利浦家用
真空卧式吸尘器

型号：FC8398, FC8396
 额定电压：220V~
 额定频率：50Hz
 额定输入功率：1300 W
 生产日期：请见产品底部
 产地：中国



飞利浦家电（苏州）有限公司
 中国苏州新区玉山路
 邮政编码：215011
 电话：0512-68253516

全国顾客服务热线：4008 800 008

本产品根据GB4706.1-2005, GB4706.7-2004, GB4343.1-2003及GB17625.1-2003制造

PHILIPS

产品：飞利浦家用
真空卧式吸尘器

型号：FC8392
 额定电压：220V~
 额定频率：50Hz
 额定输入功率：1200 W
 生产日期：请见产品底部
 产地：中国

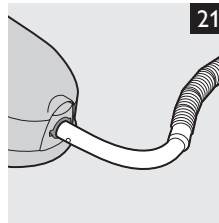
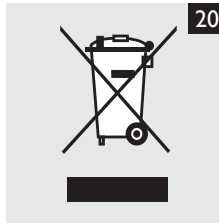
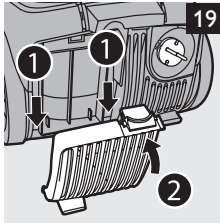
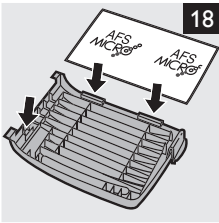
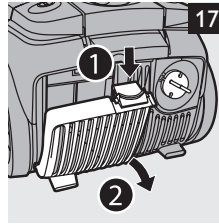
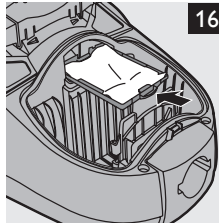
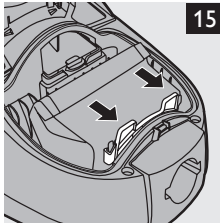
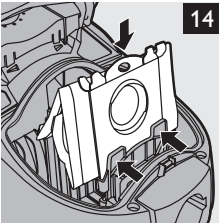
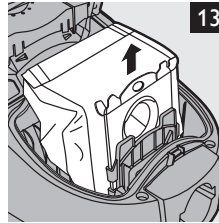
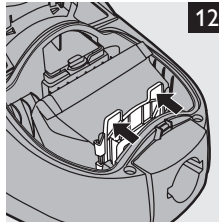
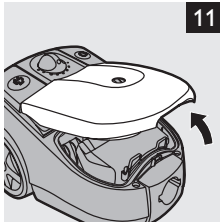
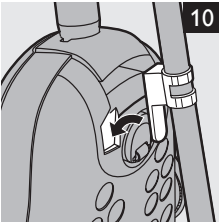
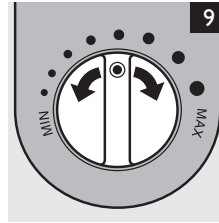
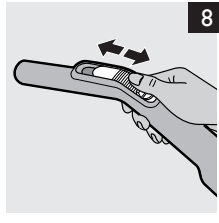
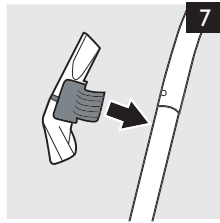
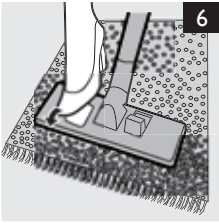
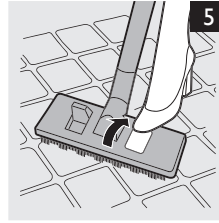
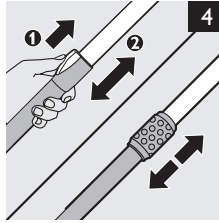
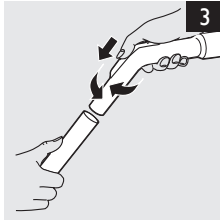
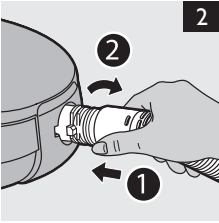


飞利浦家电（苏州）有限公司
 中国苏州新区玉山路
 邮政编码：215011
 电话：0512-68253516

全国顾客服务热线：4008 800 008

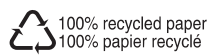
本产品根据GB4706.1-2005, GB4706.7-2004, GB4343.1-2003及GB17625.1-2003制造

请妥善保管本使用说明书
 发行日期：2006/11/08





www.philips.com



4222.003.3069.3