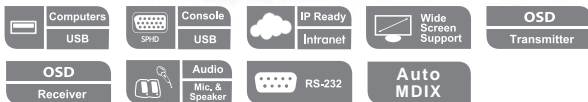


CE790

Digital KVM Extender

- The CE790 is a IP based KVM Extender with automatic cable detection (Auto-MDIX) and RS-232 serial functionality that allows access to a computer system from a remote USB console (USB keyboard, monitor, and USB mouse) anywhere on the intranet.

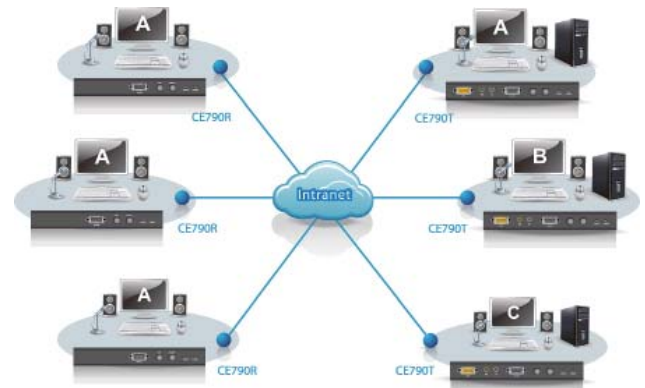
The CE790 improves on previous designs by: 1) the addition of an intuitive On Screen Display (OSD) on both the transmitter and receiver units for easy setup and operation; 2) working over a standard TCP/IP LAN via inexpensive Cat 5e cable, allowing point-to-point, point-to-multipoint, and multipoint-to-multipoint administration without the need for an additional KVM switch; and 3) the addition of an RS-232 port, on both the transmitter and receiver Units – to connect to a serial terminal for configuration, and serial devices such as touchscreens and barcode scanners.



Features

- Remotely access computers on your KVM installation via intranet
- Dual console operation – control your system from both the transmitter and receiver USB consoles
- OSD (On Screen Display) on both the transmitter and receiver units
- Supports GUI operation1
- No software required – an HTTP server is embedded in both units
- Built-in ASIC for greater reliability and compatibility
- USB Keyboard and USB Mouse Ports
- RS-232 serial ports2 – allows you to connect to a serial terminal for configuration, or serial devices such as touchscreens and barcode scanners
- Audio enabled
- USB overcurrent detection and prevention
- High resolution video – up to 1920 x 1080
- Supports widescreen formats
- Ultra-High quality video mode
- Hot pluggable
- Rack mountable
- Firmware upgradable
- Auto-MDIX – automatically detects cable type

Note: 1. The CE790 AP and GUI operation instructions can be downloaded from the ATEN website (www.aten.com).
2. RS-232 serial ports support Tx/Rx signals only.



- * The CE790 can be installed in point to point, point to multipoint and multipoint to multipoint configurations. Multipoint configurations require a separate purchase - contact your dealer for details.
- * In multipoint configurations, the IGMP (Internet Group Management Protocol) function of your network switches/hubs should be enabled to avoid deterioration of data throughput. If you do not know how to enable IGMP, please contact your network administrator.

Specification

Function		CE790T	CE790R
Connectors	Console Ports	Keyboard	1 x USB Type A Female (White)
		Video	1 x HDB-15 Female (Blue)
		Mouse	1 x USB Type A Female (White)
		Speaker	1 x Mini Stereo Jack Female (Green)
		Mic.	1 x Mini Stereo Jack Female (Pink)
Connectors	KVM Ports	Keyboard/ Video / Mouse	1 x SPHD-17 Female (Yellow)
		Speaker	1 x Mini Stereo Jack (Green)
		Mic.	1 x Mini Stereo Jack (Pink)
		RS-232	1 x DB-9 Female (Black)
Pushbuttons	Power	1 x DC Jack	
	LAN	1 x RJ-45 Female (Black)	
	OSD	1 x Pushbutton	
	Select	1 x Pushbutton	
	Status	1 (Green / Orange)	
	Power	1 (Green / Red)	
	Emulation	Keyboard / Mouse	USB
Power Consumption	Video	DC5.3V/6.62W	DC5.3V/6.36W
	Video	Up to 1920 x 1080	
	Environment	Operating Temp.	0-50°C
Environment	Storage Temp	-20-60°C	
	Humidity	0-80% RH, Non-condensing	
	Physical Properties	Housing	Metal
Physical Properties	Weight	0.50 kg	0.48 kg
	Dimensions (L x W x H)	20.20 x 8.64 x 2.50 cm	20.20 x 8.64 x 2.50 cm

* The specifications and pictures are subject to change without notice.

