

SPS ADVANCE R

Line-interactive sine-wave UPS 1U rack 750 VA to 1500 VA



SPS ADVANCE R: High-density security in 1U rack format

Salicru's **SPS ADVANCE R** series UPSs feature line-interactive technology (AVR stabilisation with buck-boost regulation) and pure sine-wave output to power all kinds of critical load.

This technology enables a high level of efficiency to be achieved, providing significant savings in the total consumption of the rack. Also noteworthy is their compatibility with current APFC (active power factor correction) power supplies.

In terms of communications, the options are through the RS-232 interface and management and monitoring software for Windows, Linux and Mac systems, or through the available adapters (SNMP/ Web adapter) to be inserted into the smart slot that the devices incorporate.

The series is available in powers of 750, 1,000 and 1,500 VA, all in 19" rack format and with a height of 1U. The depth is 216 mm for the 750 VA model and 485 mm for the 1,000 and 1,500 VA models.

Applications: High-performance compact solution

Specially designed for installation on racks with high occupancy density, Salicru's **SPS ADVANCE R** series UPSs, thanks to their height of only one U, enable space to be freed up for other devices. In addition, their IEC sockets facilitate the connection of all computing environment elements.



SALICRU
SMART
SOLUTIONS

SALICRU

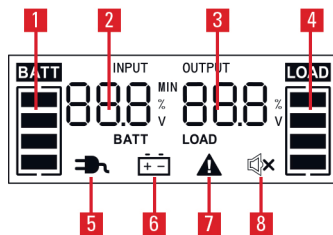
Performances

- Line-interactive technology with AVR stabilisation(buck-boost).
- Pure sine wave.
- Ultra-compact 1U rack format.
- Efficiency of up to 98%.
- Compatible with APFC power supplies.
- LCD display + keys for operation and information.
- Smart slot for SNMP/potential-free contacts/Modbus.
- RS-232 communication interface.
- Downloadable monitoring and management software for Windows, Linux and Mac.
- IEC output sockets.
- Automatic battery test on each start-up.
- Cold-start function for start-up from batteries.
- SLC Greenergy solution.



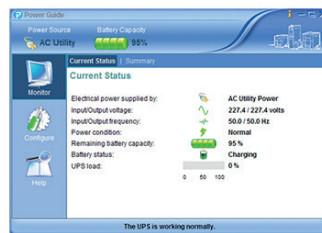
Display

1. Level of battery available.
2. Values for input/battery/backup.
3. Values for output/charging.
4. Level of load connected.
5. Normal operation.
6. Battery operation (AC power outage).
7. Device fault.
8. Audible alarm and alarm cancellation.



Software

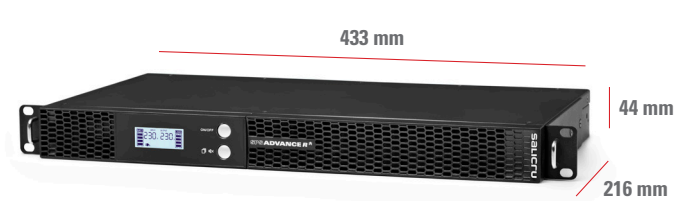
UPS monitoring and management software for closing files and applications. Compatible with Windows, Linux and Mac.



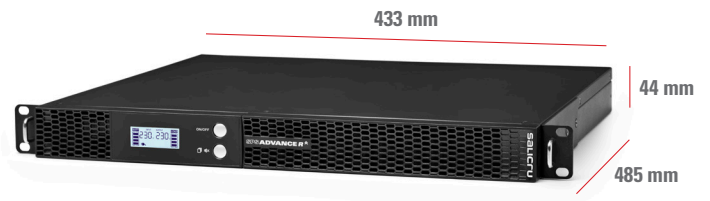
Range

MODEL	CODE	POWER (VA / W)	NO. OF OUTPUT SOCKETS	DIMENSIONS (D × W × H mm)	WEIGHT (Kg)
SPS 750 ADV R	6A0DA000001	750 / 450	4 × IEC C13	216 × 433 × 44	8.6
SPS 1000 ADV R	6A0DA000002	1000 / 600	4 × IEC C13	485 × 433 × 44	14.2
SPS 1500 ADV R	6A0DA000003	1500 / 900	4 × IEC C13	485 × 433 × 44	16.2

Dimensions

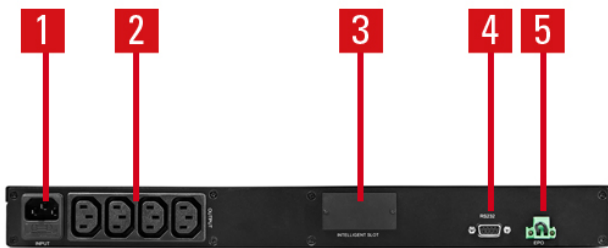


SPS 750 ADV R



SPS 1000/1500 ADV R

Connections



1. Input socket with fuse.
2. Output sockets (4 x IEC13).
3. Intelligent slot for SNMP/web adapter.
4. RS-232 interface.
5. Emergency power off (EPO).

Technical specifications

MODEL		SPS ADVANCE R
TECHNOLOGY		Line-interactive
FORMAT		Rack 1U
INPUT	Rated voltage	230 V
	Voltage range 100% load	165 ÷ 290 V
	Stabiliser	AVR (Buck & Boost)
	Rated frequency	50 / 60 Hz (auto-detection)
	Frequency range	±5 Hz
	Protection	Fuse
OUTPUT	Rated voltage	230 V
	Voltage accuracy (battery mode)	±10%
	Total harmonic distortion (THDv)	<5% linear load / <10% non-linear load
	Waveform (battery mode)	Pure sine wave
	Frequency	50/60 Hz (same as input)
	Frequency accuracy (battery mode)	±1 Hz
	Compatibility with APFC loads	Yes ⁽¹⁾
	Performance Stabiliser mode (AVR)	>92%
	Performance Battery mode	>80%
	Admissible overloads in battery mode	110% for 1 min / 130% immediate
	Admissible overloads in on-line mode	110% for 1 min / 130% immediate
	Socket type	IEC C13
BATTERY	Battery type	Pb-Ca sealed, AGM, maintenance-free
	Charge type	I/U (constant current/constant voltage)
	Recharge time	4 hours to 90%
	User replaceable battery	Yes
	Battery test	Automatic on each start-up + manual
COMMUNICATION	Ports	RS-232 / DB9
	Intelligent slot	Slot for SNMP/potential-free contacts/ MODBUS
	Monitoring software	For Windows, Linux and Mac
INDICATIONS	Type	LCD + keypad
	Values	Input and output voltage / % load / % battery / backup
	Levels	Connected load / overload / battery / low battery
	Alarm	Battery / low battery / overload / failure
OTHER FUNCTIONS	Cold start (start-up from batteries)	Yes
	Emergency stop (EPO)	Yes
GENERAL	Operating temperature	0° C ÷ 40° C
	Relative humidity	Up to 95%, non-condensing
	Maxium operating altitude	2,400 masl
	Acoustic noise at 1 metre	<40 dB
STANDARDS	Safety	EN 62040-1/ EN 60950-1
	Electromagnetic compatibility (EMC)	EN 62040-2(C2)
	Operation	EN 62040-3
	Quality and environmental management	ISO 9001 and ISO 14001

(1) Power degradation of 20%

Information subject to change without notice.



@salicru_en



www.linkedin.com/company/salicruen/