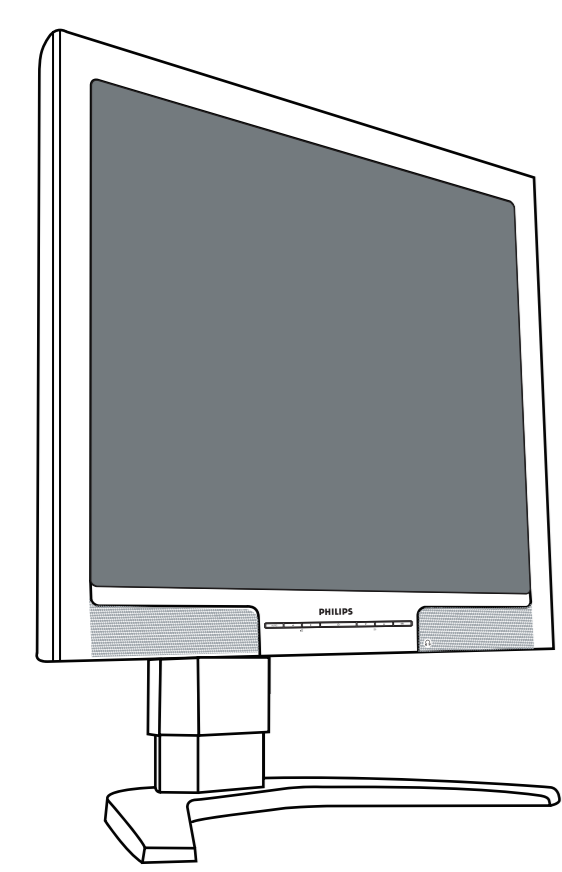


# Quick start guide

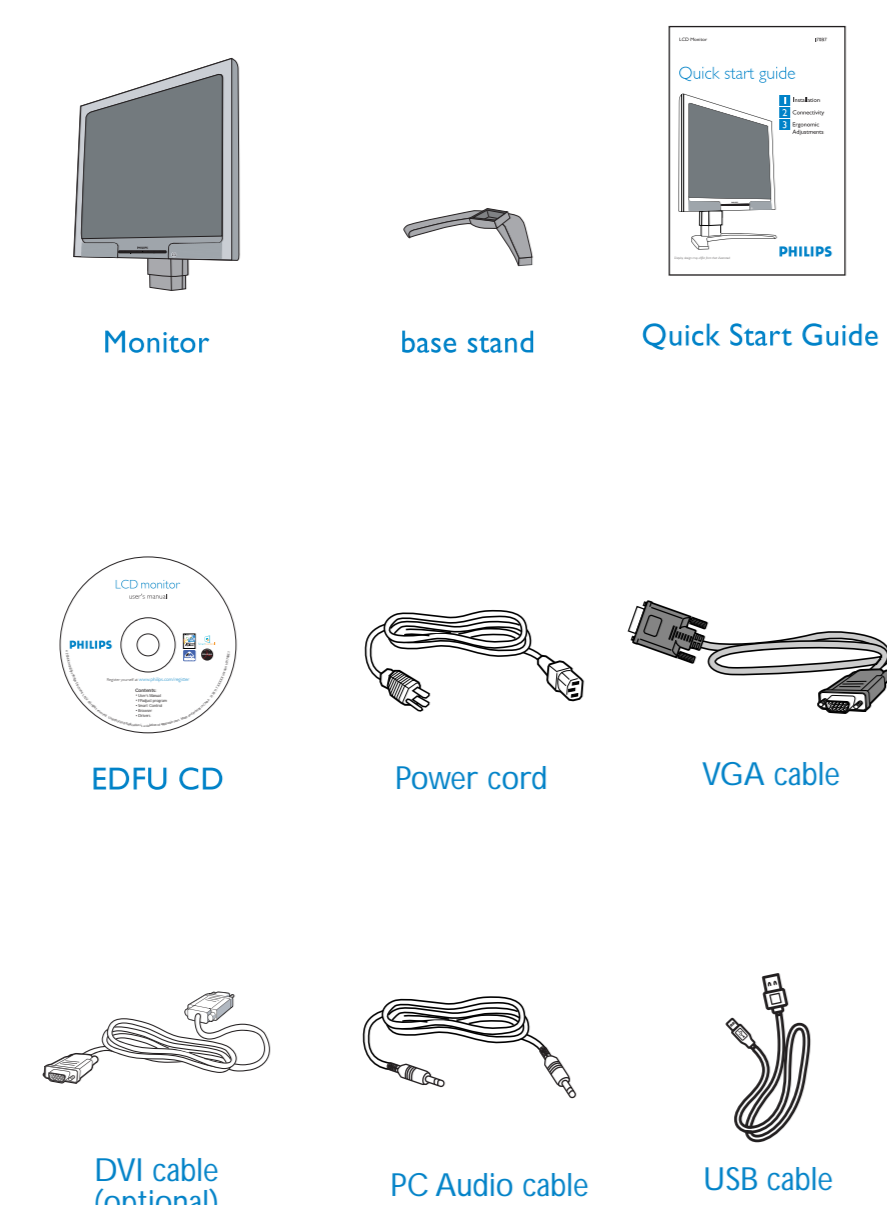
- 1 Installation
- 2 Connectivity
- 3 Ergonomic Adjustments



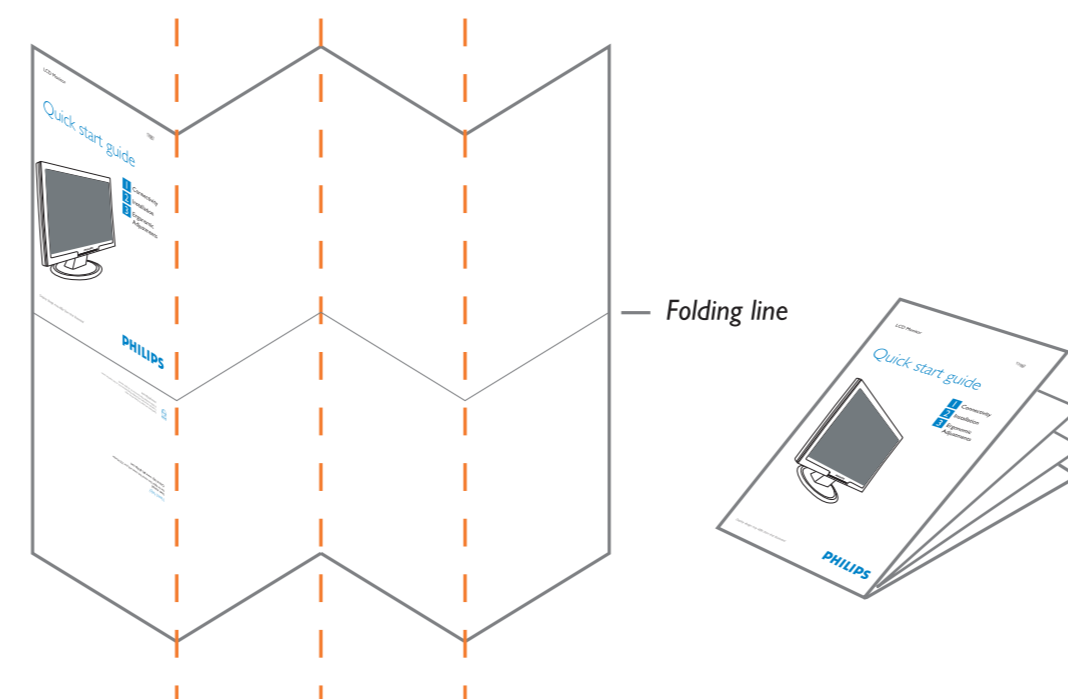
Display design may differ from that of the actual product.

V5L110081D1P

## What's in the box



Artwork: 170B7 Quick Start Guide  
 Extend: 4pp + 4pp  
 Size: Open: 594W x 210Hmm Close: 148.5W x 210H (mm)  
 Material: 100gsm White, woofies coated  
 Printing: Both side printing - 2C x 2C - Pantone 3005C + Black  
 Finishing: Folded sheet  
 Date prepared: 02 Mar 2006



www.philips.com  
 Philips reserves the right to change without notice the contents of this manual. Philips Electronics NV, All rights reserved.  
 Philips Electronics NV, All rights reserved.

170B7B01  
 Online help: www.p4c.philips.com  
 Need manual help? Refer manual that comes with your LCD Monitor.

## 1 Installation

**A Base install to monitor**

Place the monitor face down on a smooth surface taking care to avoid scratching or damaging the screen.

**B Attach stand**

Hold the monitor base with both hands and firmly fix the base stand into two-pronged base attachments.

## 2 Connectivity

**A Monitor Connections**

- AC power input
- PC Audio input
- DVI-D input
- VGA input
- Kensington anti-theft lock
- USB upstream and downstream

**B VGA**

**C DVI**

For best performance, use your DVI input and ensure that your display settings are set at 1280 x 1024 @60Hz

## 3 Ergonomic Adjustments

**A Tilt**

**B Swivel**

**C Height adjustment**

**D Quick reference for control buttons**

- To switch monitor's power On and Off
- To access OSD menu
- To adjust the OSD menu
- To adjust brightness of the display
- To adjust the OSD menu and the volume of the display
- Automatic adjust the horizontal position, vertical position, phase and clock settings.
- Earphone jack

# Quick start guide

Guide de démarrage rapide / Guía rápida / Kurzanleitung / Guida rapida / 快速入门指南 / 快速入門指南

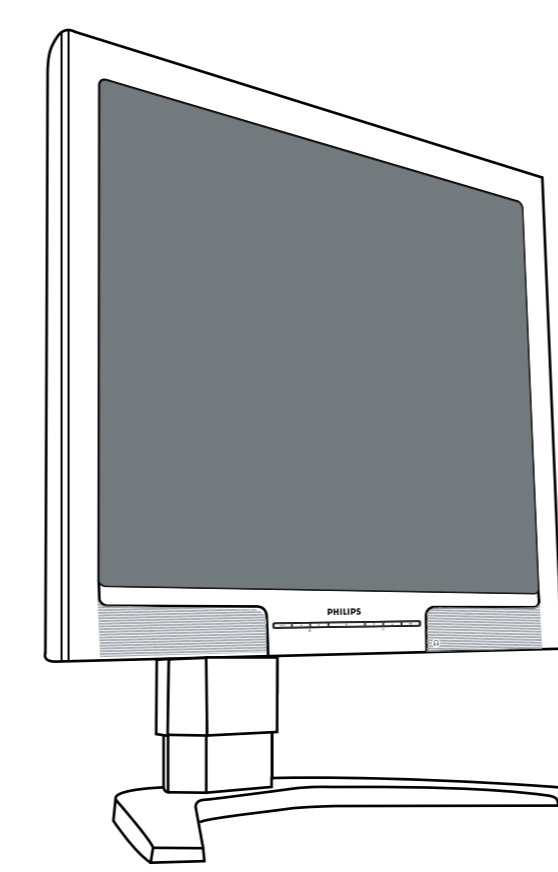


Illustration non contractuelle  
 El diseño del reproduutor puede diferir con respecto de lo ilustrado.  
 Das Display-Design kann von der Abbildung abweichen.  
 La illustrazione può differire da quella presente nella figura.  
 显示器设计可能与插图有所不同。 請參閱圖樣標明參考。



## Contenu de la boîte / Contenido del embalaje / Lieferumfang / Contenuto della confezione / 包装盒内的物品清单 / 包裝盒內物品清單

- 1 Installation / Instalación / Installation / Installazione / 安裝 / 安裝
- 2 Connectivité / Conectividad / Verbindungs-fähigkeit / Connettività / 連接性 / 連接
- 3 Réglages ergonomiques / Ajustes ergonómicos / Ergonomische Einstellmöglichkeiten / Regolazioni ergonomiche / 人體工程學調整 / 人體工程學調整

## 1 Installation / Instalación / Installation / Installazione / 安裝 / 安裝

**A Pour installer la base / Per installare la base / Um den Monitorfuß zu montieren / Para instalar la base / 如何安裝底座 / 安裝底座步驟**

**B fixer le support / conectar soporte / Ständer anbringen / attacco supporto / 連接支架 / 連接架**

## 2 Connectivité / Conectividad / Verbindungs-fähigkeit / Connettività / 連接性 / 連接

**A Connexions du moniteur / Conexiones de monitor / Monitoranschlüsse / Conessioni del monitor / 監視器連接 / 顯示器連接**

**B VGA**

**C DVI**

## 3 Réglages ergonomiques / Ajustes ergonómicos / Ergonomische Einstellmöglichkeiten / Regolazioni ergonomiche / 人體工程學調整 / 人體工程學調整

**A Réglage de l'inclinaison / Inclinación / Kippen / Inclinazione / 傾斜 / 傾斜**

**B Réglage de la rotation / Rotación / Plattformen geneigen / Swivelen / Rotazione orizzontale / 旋轉 / 旋轉**

**C Réglage en hauteur / Regulación de altura / Höhen-einstellung / Regolazione altezza / 高度調整 / 高度調整**

**B Référence rapide pour les boutons de contrôle / Kurzanleitung für Bedientasten / Referimenti rapidi per i tasti di controllo / 控制按钮 / 控制按钮**

**● Besoin d'aide? / Manual de usuario / Consultar el manual de usuario o buscar información técnica en línea / Guida on line: www.p4c.philips.com**

**● Necesita ayuda? / Manual de uso / Consultar el manual de usuario o buscar información técnica en línea / Guida on line: www.p4c.philips.com**

**● Benötigen Sie Hilfe? / Benutzerhandbuch / Suchen Sie im Online-Benutzerhandbuch nach den den Handbuch-Einstellungswerten / Online-Hilfe: www.p4c.philips.com**

**● 需要協助? / 請參閱 用戶手冊 或前往 www.p4c.philips.com 查詢詳情。**

**● 需要協助? / 請參閱 用戶手冊 或前往 www.p4c.philips.com 查詢詳情。**