



**Philips Lumea Prestige  
IPL - Hair removal device**

With unique curved attachments

Armpits, bikini, body, face  
With SmartSkin sensor  
Both cordless and corded use



**BRI956/30**

Experience hair-free smoothness for up to 8 weeks\*

## Unique attachments designed for optimal results

The world's first IPL with unique curved attachments is designed for optimal results all over. Philips Lumea Prestige is also the most effective IPL solution offering cordless and corded use and a SmartSkin sensor.

### Maximum freedom, minimum hassle

- With SmartSkin sensor
- No replacement parts, no hidden costs

### Continuous smooth skin with Lumea IPL technology

- Derived from professional IPL, developed with dermatologists
- Both cordless and corded functionality
- Proven effectiveness
- Suitable for a wide variety of hair and skin types

### Specialized treatment of different body areas

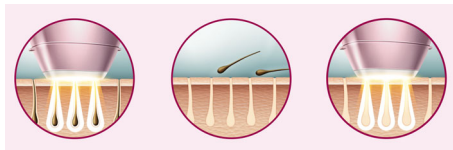
- Uniquely curved attachments for different body areas
- Body attachment with large, curved-in design for large areas
- Bikini attachment, curved with transparent filter for bikini
- Armpits attachment medium size, curved-out design for armpit
- Face attachment with precise design and extra face filter

## IPL - Hair removal device

With unique curved attachments Armpits, bikini, body, face, With SmartSkin sensor, Both cordless and corded use

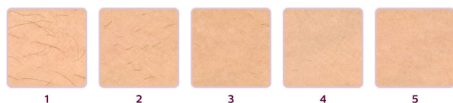
# Highlights

### Lumea prevents hair regrowth\*\*



Philips Lumea uses an innovative light based technology called Intense Pulsed Light (IPL) to break the cycle of hair regrowth. Gentle pulses of light are applied at the root and, after several treatments, hair is prevented from growing back. IPL technology has been available in specialist salons since 1997. Philips Lumea, derived from this professional IPL technology, makes it possible for you to treat hair easily and effectively at home. Philips Lumea Prestige is the culmination of 14 years of research and development in collaboration with leading dermatologists.

### Proven effectiveness



Objective studies show significant hair reduction in as little as 3 to 4 bi-weekly treatments, resulting in smooth, hair-free skin. To maintain results touch-up every 4 to 8 weeks. - To enlarge this picture, please click on the image in the image gallery on the top of this page.

### Suitable hair and skin types



Philips Lumea Prestige works effectively, easily and safely on a wide variety of hair and skin

types. It works on naturally dark blonde, brown and black colored hairs and on skin tones from very white to dark brown. As with other IPL based treatments, Philips Lumea cannot be used to treat white / grey, light blonde or red hair and is not suitable for very dark skin. This is due to the high contrast required between the pigment in hair color and pigment in the skin tone.

### Treatment of body areas



Inspired by the uniqueness of each body area, Philips Lumea Prestige is the only IPL device to offer uniquely curved attachments designed for optimal results on different body areas. Attachments differ by combinations of shape, window size and filter. This Philips Lumea Prestige offers specialized treatment on body (legs, arms, stomach) and face (upper lip, chin), bikini and armpits.

### Body attachment



Large, curved-in design to follow body contours thus effectively covering areas like legs, arms, stomach. Also, enables fast treatment on large body areas thanks to the largest treatment window (4.1 cm<sup>2</sup> window size). 83% of women satisfied with hair reduction on legs.\*\*\*

BRI956/30

### Bikini attachment



It is specially designed for effective treatment of bikini hair. It is curved and has an extra transparent filter. Hair in this area tends to be stronger and thicker than leg hair - 3 cm<sup>2</sup> window size. 78% of women satisfied with hair reduction in bikini area.\*\*\*

### Face attachment



It has its own specially designed extra integrated filter and a small, flat window for gentle and precise use on upper lip, chin and jawline - 2 cm<sup>2</sup> window size. 84% of women satisfied with hair reduction on face.\*\*\*



[asimpleswitch.com](https://www.asimpleswitch.com)

### Philips Green Logo

Philips Green Products can reduce costs, energy consumption and CO<sub>2</sub> emissions. How? They offer a significant environmental improvement in one or more of the Philips Green Focal Areas – Energy efficiency, Packaging, Hazardous substances, Weight, Recycling and disposal and Lifetime reliability.

## IPL - Hair removal device

With unique curved attachments Armpits, bikini, body, face, With SmartSkin sensor, Both cordless and corded use

BRI956/30

# Specifications

### Technical specs. attachments

- Body treatment attachment: Window size: 4.1 cm<sup>2</sup>, Shape: Convex curved
- Face treatment attachment: Window size: 2 cm<sup>2</sup>, extra filter, Shape: Flat
- Armpits treatment attachment: Window size: 3 cm<sup>2</sup>, Shape: Concave curved
- Bikini treatment attachment: Shape: Concave curved, Window size: 3 cm<sup>2</sup>, extra filter

### Technical specifications

- High performance lamp: Delivers > 250,000 flashes

### Application areas

- Body areas: Arms, Legs, Stomach
- Face areas: Chin, Upper lip, Jawline
- Sensitive areas: Armpits, Bikini

### Items included

- Instructions for use: User manual
- Storage: Luxurious pouch
- Adapter: 19.5V / 4000mA

### Power

- Voltage: 100-240 V

### Safety and adjustable settings

- Integrated UV filter: Protects skin from UV light
- 5 light energy settings: Adjustable to your skin type
- Integrated safety system: Prevent unintentional flashing
- Skin Tone sensor: Detects your skin tone
- SmartSkin sensor: The right setting on demand

### Service

- Warranty: 2 years global warranty

### Application time

- Armpit: 2,5 min
- Bikini line: 2 min
- Face areas: 1,5 min
- Lower legs: 8,5 min

### Application mode

- Slide and Flash: For quick application
- Corded / cordless use: Both cordless and corded use
- Stamp and Flash: For treatment on small areas



Issue date 2018-01-17

Version: 2.0.1

© 2018 Koninklijke Philips N.V.  
All Rights reserved.

Specifications are subject to change without notice.  
Trademarks are the property of Koninklijke Philips N.V.  
or their respective owners.

[www.philips.com](http://www.philips.com)

\*\* Up to 92% hair reduction after 3 treatments when following the treatment schedule, measured on legs, individual results may vary  
\* Measured on legs, after the initial 4-5 treatments, individual results vary  
\*\*\* Study conducted in Netherlands and Austria, 46 women, after 3 treatments on armpits, bikini, legs, after 2 treatments on face