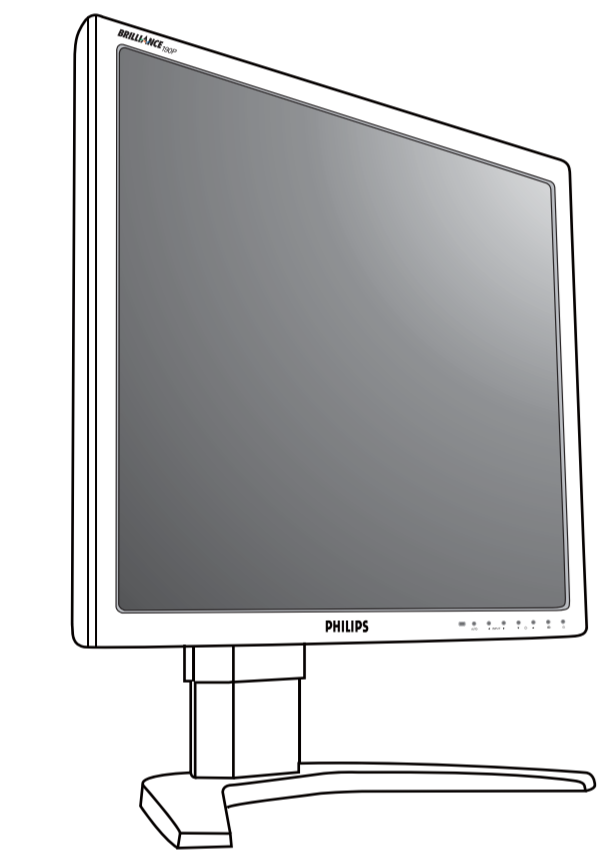


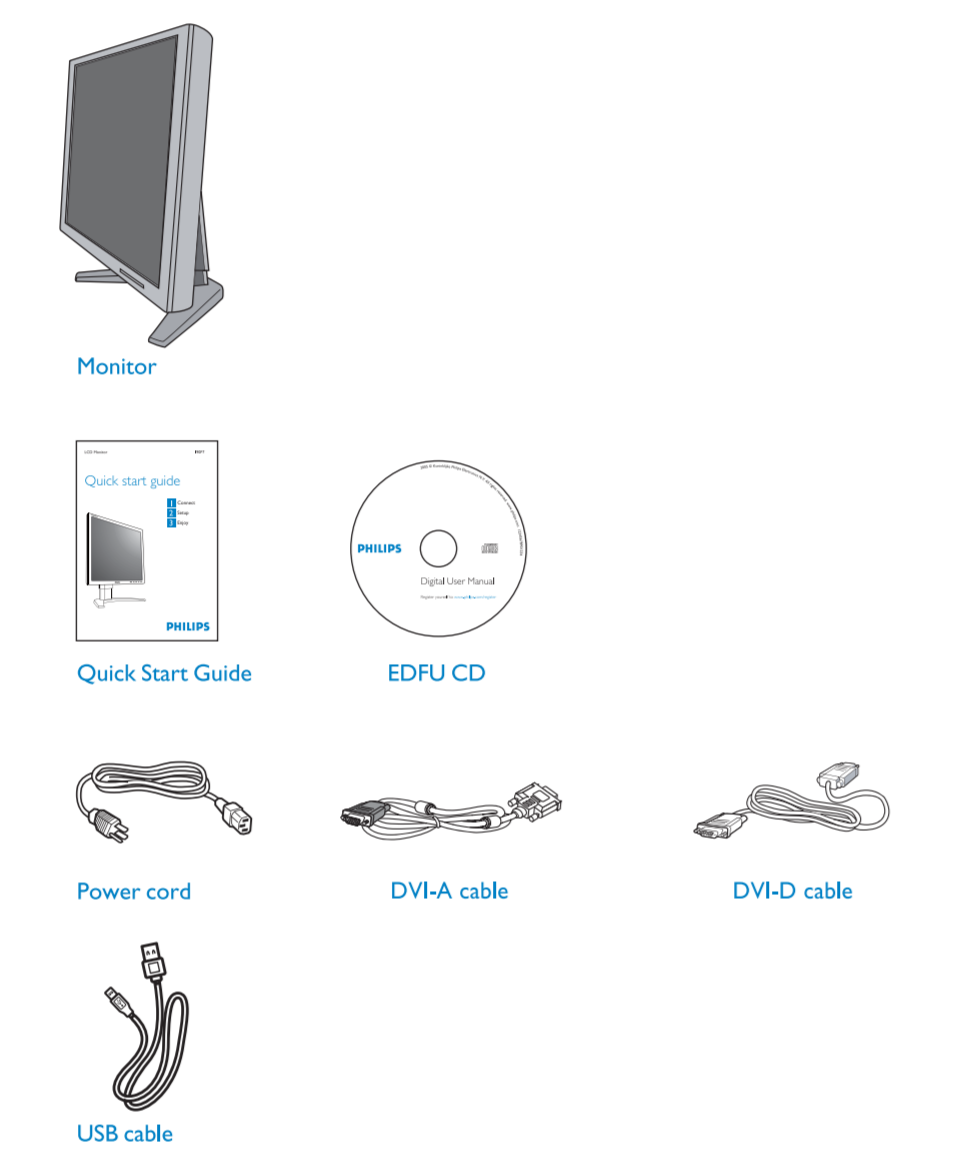
Quick start guide

- 1 Connectivity
- 2 Ergonomic Adjustments



Display design may differ from that illustrated

What's in the box



www.philips.com
 Philips is a registered trademark of Koninklijke Philips Electronics N.V. or their respective owners.
 Philips is a registered trademark of Koninklijke Philips Electronics N.V. or their respective owners.
 Philips is a registered trademark of Koninklijke Philips Electronics N.V. or their respective owners.

2 Ergonomic Adjustments

A Tilt

B Swivel

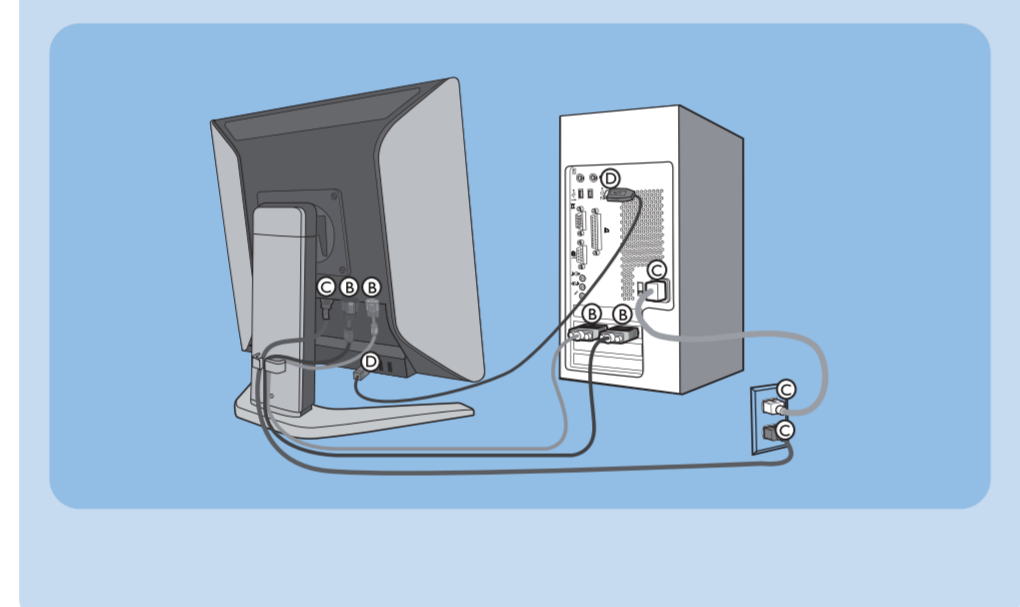
C Height adjustment

Need help? Online help: www.philips.com

1 Connectivity

A Monitor Connections

- AC power input
- DVI-A input
- DVI-D input
- Kensington anti-theft lock
- USB upstream and downstream



B DVI-A DVI-D

For best performance, use your DVI input and ensure that your display settings are set at 1280 x 1024@60Hz

C Power D USB

Warning

Yes

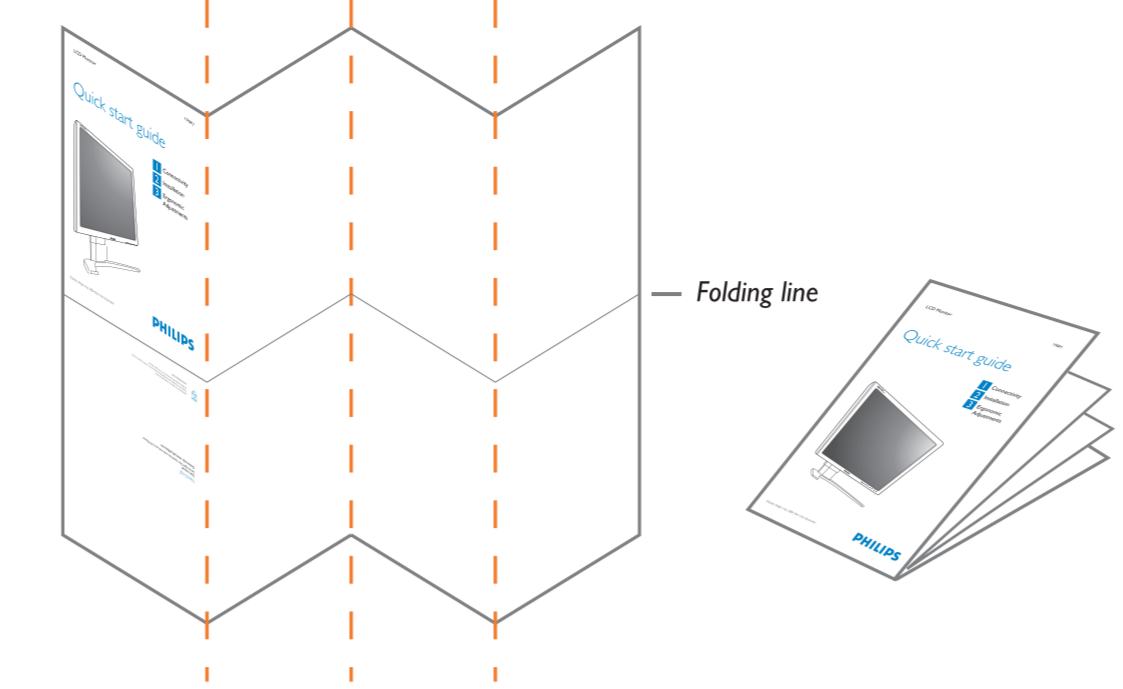
Insert the pin before lifting Monitor

No

Base stand may eject without pin

Please follow the instruction on the above illustrations, before lifting your monitor. Not following the recommended way may cause injury

Using two hands to lift your monitor is strongly recommended



Artwork: 190P7 Quick Start Guide
 Extend: 4pp + 4pp
 Size: Open: 594W x 210Hmm Close: 148.5W x 210H (mm)
 Material: 100gsm White, woodfree coated
 Printing: Both side printing - 2C x 2C - Pantone 3005C + Black
 Finishing: Folded sheet
 Date prepared: 04 May 2006

Quick start guide

Guide de démarrage rapide / Guía rápida / Kurzanleitung / Guida rapida / 快速入门指南 / 快速入門指南

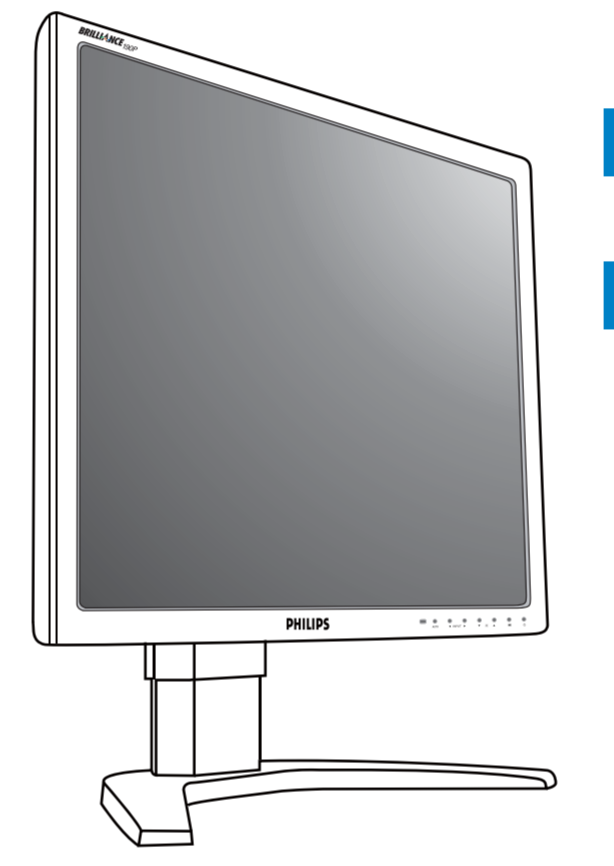
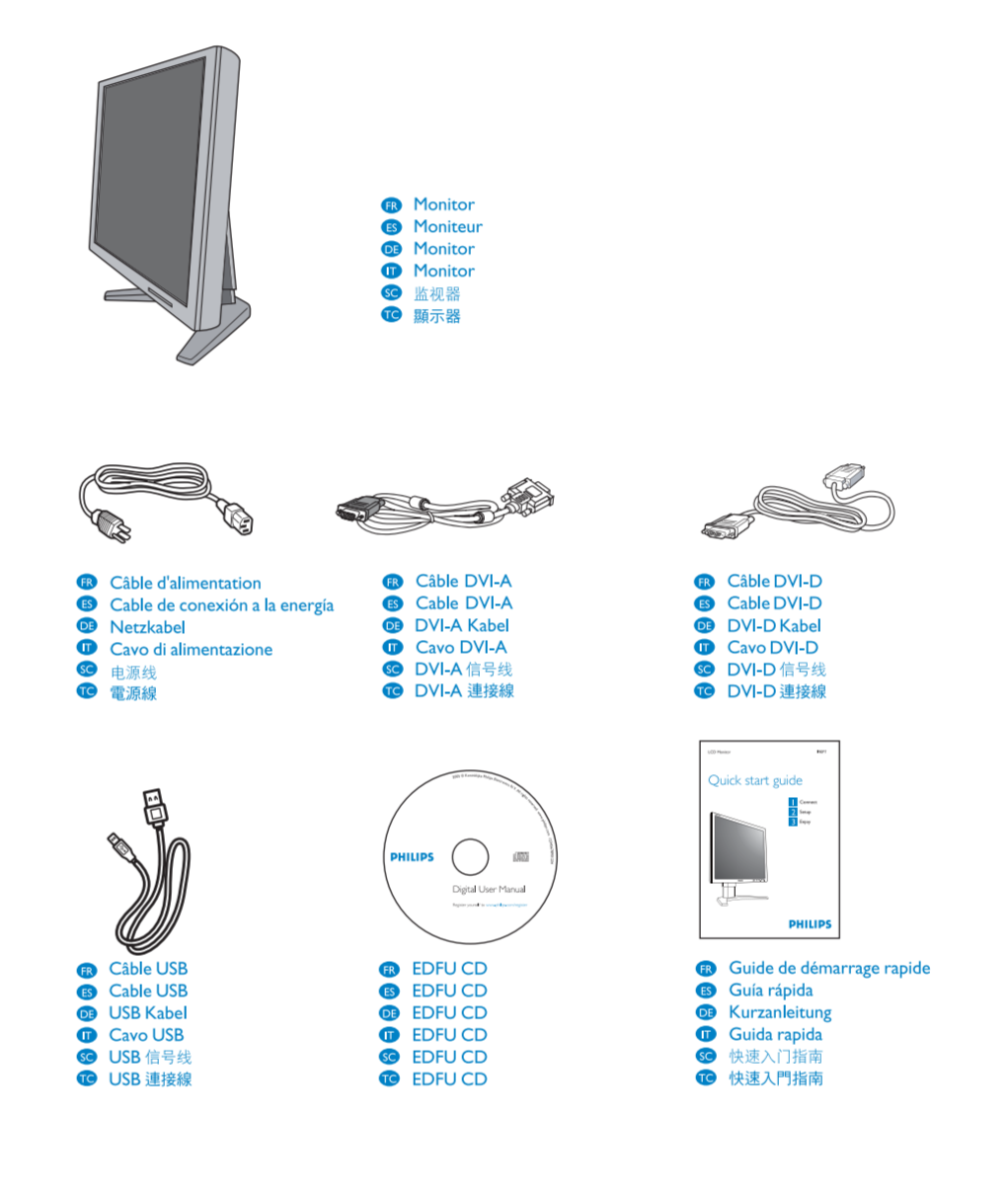


Illustration non contractuelle. El diseño del reproduzidor puede diferir con respecto al de la ilustración. Das Display-Design kann von der Abbildung abweichen. La visualizzazione può differire da quello presente nella figura. 显示器设计可能与插图有所不同。 顯示器插圖僅供參考。

- 1 Connectivité / Conectividad / Verbindingsfähigkeit / Connettività / 连接性 / 連接
- 2 Réglages ergonomiques / Ajustes ergonómicos / Ergonomische Einstellmöglichkeiten / Regolazioni ergonomiche / 人体工学调整 / 人體工學調整

Contenu de la boîte / Contenido del embalaje / Lieferumfang / Contenuto della confezione / 包装盒内的物品清单 / 包裝盒內物品清單



2 Réglages ergonomiques / Ajustes ergonómicos / Ergonomische Einstellmöglichkeiten / Regolazioni ergonomiche / 人体工学调整 / 人體工學調整

A Réglage de l'inclinaison / Inclinación / Kippen / Inclinazione / 倾斜 / 傾斜

B Affichage format portrait / Posición vertical / Hochformatdarstellung / Display vertical/verticalità / 垂直显示 / 垂直顯示

C Réglage en hauteur / Reglajón de altura / HöhenEinstellung / Regolazione altezza / 高度调整 / 高度調整

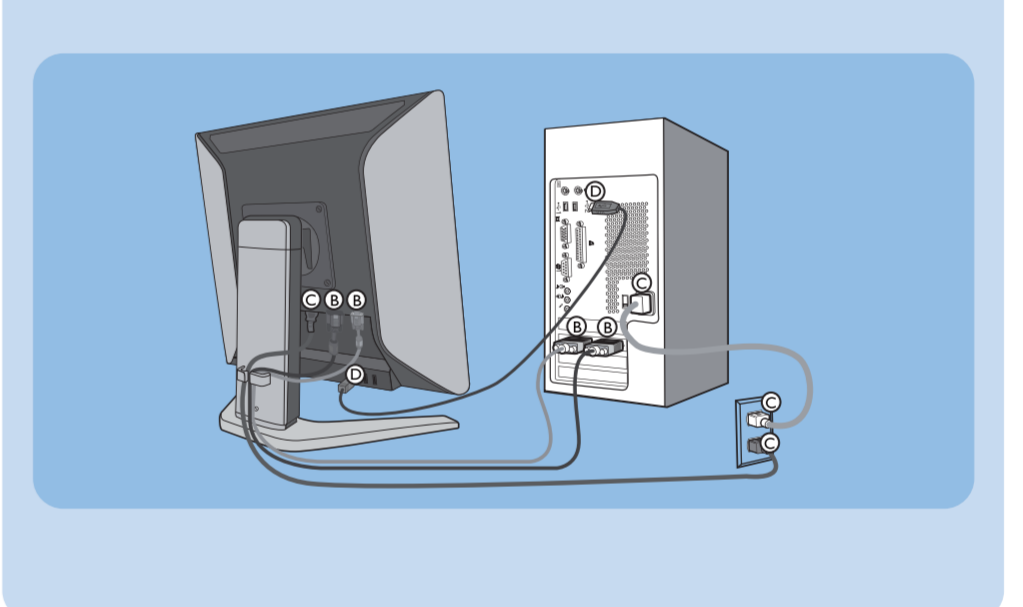
D Référence rapide pour les boutons de contrôle / Guida Rapida per i bottoni de control / Kurzanleitung für Bedientasten / Referimenti rapidi per i tasti di controllo / 控制按钮 / 控制按钮快捷指南

Press the button to...
 Power on/off, OSD menu, Brightness, Contrast, Signal input selection, etc.

1 Connectivité / Conectividad / Verbindingsfähigkeit / Connettività / 连接性 / 連接

A Connexions du moniteur / Conexiones de monitor / Monitoranschlüsse / Conessioni del monitor / 监视器连接 / 顯示器連接

- AC power input
- DVI-A input
- DVI-D input
- Kensington anti-theft lock
- USB upstream/downstream



B DVI-A DVI-D

For best performance, use your DVI input and ensure that your display settings are set at 1280 x 1024@60Hz

C Power D USB

AVERTISSEMENT / ADVERTENCIA / WARNING / AVVERTENZA / 小心 / 注意

Yes

Insert the pin before lifting Monitor

No

Base stand may eject without pin

Please follow the instruction on the above illustrations, before lifting your monitor. Not following the recommended way may cause injury

Using two hands to lift your monitor is strongly recommended

www.philips.com
 Philips is a registered trademark of Koninklijke Philips Electronics N.V. or their respective owners.
 Philips is a registered trademark of Koninklijke Philips Electronics N.V. or their respective owners.
 Philips is a registered trademark of Koninklijke Philips Electronics N.V. or their respective owners.