

ideapad 720S

ULTRASLIM. ULTRA POWERFUL.

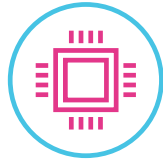
The Lenovo™ IdeaPad™ 720S offers feather-light portability with enough power to handle everything you do. Available in 13", 14" and 15" screen sizes, this elegant powerhouse is finished in premium aluminum, offers top-of-the-line processing, stunning clarity, the 360° sound of Dolby Atmos® and innovative upgrades like an instant fingerprint login. Do more in style.

WHY YOU SHOULD BUY THE LENOVO IDEAPAD 720S



Thin and light

The IdeaPad 720S is startlingly sleek and portable with 13", 14" and 15" screen sizes. Pop it in your bag, and work or watch anywhere.



Dynamic performance

Featuring up to 8th Generation Intel® Core™ i7 processing, the IdeaPad 720S is designed to handle the innovations of the future with ease. The latest generation of Intel® processing represents an enormous leap forward, with up to a 40% boost in application performance from previous generations*. Stream 4K or FHD, login instantly, and start up and run multiple programs with speed and ease.



Lenovo™



Enjoy stunning visuals

Featuring FHD (14" & 13" touchscreen models) or up to 4K resolution (13" non-touchscreen & 15" touchscreen) and a redesign that significantly narrows the borders around the screen, the IdeaPad 720S provides the visual quality of a home theater.



Immersive sound

The IdeaPad 720S offers Dolby Atmos®, which creates a breathtaking 360° immersive audio experience when you listen through headphones.



* Software and workloads used in performance tests may have been optimized for performance only on Intel® microprocessors. Performance tests are measured using specific computer systems, components, software, operations and functions. Any change to any of those factors may cause the results to vary.



WWW.LENOVO.COM



ideapad 720S

SPECIFICATIONS

Lenovo IdeaPad 720S-15IKB*

PERFORMANCE

Processor

Up to 7th Generation Intel® Core™ i7 Processor

Operating System

Windows 10 Home or Windows 10 Pro

Graphics

Up to NVIDIA® GeForce® GTX-1050Ti Max-Q

Camera & Microphone

HD with Dual Microphone

Memory

2 x 4 GB DDR4 / 2 x 8 GB DDR4 Dual Channel

Storage

256 GB/512 GB/1 TB PCIe SSD

Audio

2 x 2W JBL® Speakers

Dolby Atmos® via Headphones

Battery¹

7FHD : 12.8 Hours

UHD Touch: 8.8 Hours

DESIGN

Display

15.6" FHD (1920 x 1080) IPS; Non-Touchscreen

15.6" UHD (3840 x 2160) IPS; Touchscreen

Dimensions (W x D x H)

(mm) : 358.8 x 243.5 x 17.95

(inches) : 14.12" x 9.59" x 0.71"

Weight

Touchscreen : Starting at 4.6 lbs (2.1 kg)

Non-Touchscreen : Starting at 4.2 lbs (1.9 kg)

Additional Features

Fingerprint Reader²

Touchscreen³

Backlit Keyboard

Cortana with Far Field Microphones⁴

Always-On Charging

Color Options

Platinum Silver

Iron Grey

CONNECTIVITY

WLAN

1 x 1 WiFi 802.11 ac

2 x 2 WiFi 802.11 ac

Bluetooth®

Bluetooth® 4.1

I/O (Input/Output) Ports

Audio Combo Jack

1 x USB 3.0 Type-A including AOC

1 x USB 3.0 Type-C™

1 x USB 3.1 Type-C including Thunderbolt™

DP 1.2a, Power Delivery

3-in-1 Card Reader (SD, SDXC, SDHC)

PRELOADED SOFTWARE

- Lenovo App Explorer
- Lenovo Companion 3.0
- Lenovo ID
- Lenovo Settings
- McAfee LiveSafe™ (30-day trial)
- Microsoft Office 365 (30-day trial)

¹ All battery life claims are approximate and based on test results using the MobileMark® 2014 ver 1.5 battery life benchmark test. Actual results will vary, and depend on numerous factors including product configuration and usage, software, operating conditions, wireless functionality, power management settings, screen brightness and other factors. The maximum capacity of the battery will naturally decrease with time and usage. See <https://bapccom/products/mobilemark-2014/> for additional details.

² Optional.

³ Optional and enabled only for 13.3" & 15.6" models.

⁴ Available only on 13.3" and 15.6" models.

LENOVO SERVICES

Warranty Upgrades – On-site / In-Home Service

Maximizes PC uptime and productivity by providing convenient, fast repair services in your own home.

Accidental Damage Protection

Avoid the hassles of unexpected repair costs. Provides coverage for non-warranted damage incurred under normal operating conditions, such as minor spills, drops or damage to the integrated screen.

* Example of Lenovo IdeaPad catalogue naming convention



Warranty Extensions (1-to-3 Years Total Duration)

This fixed-term, fixed-cost service helps accurately budget for PC expenses, protect your valuable investment and potentially lower the cost of ownership over time.

Intel® platform codes

Apollo Lake: IAP, Broadwell: IBD, Braswell: IBR, Broadwell: IBW, Baytrail: IBY, Cannonlake: ICN, Haswell: IHH, Kabylake: IKB, Skylake H: ISH, Skylake: ISK, Skylake U: ISU, Skylake Y: ISY, Skylake Z: ISZ

OPTIONS & ACCESSORIES



Lenovo 510 Wireless Mouse



Lenovo 500 2.0 Bluetooth® Speaker



Lenovo 15.6" NAVA On-Trend Backpack



WWW.LENOVO.COM

Lenovo reserves the right to alter product offerings and specifications at any time, without notice. Lenovo makes every effort to ensure accuracy of all information but is not liable or responsible for any editorial, photographic or typographic errors. All images are for illustration purposes only. For full Lenovo product, service and warranty specifications visit www.lenovo.com. Lenovo makes no representations or warranties regarding third party products or services. **Trademarks:** The following are trademarks or registered trademarks of Lenovo: Lenovo, the Lenovo logo, ideapad, IdeaCentre, yoga and yoga home. Microsoft, Windows and Vista are registered trademarks of Microsoft Corporation. Ultrabook, Celeron, Celeron Inside, Core Inside, Intel, Intel Logo, Intel Atom, Intel Atom Inside, Intel Core, Intel Inside Logo, Intel vPro, Itanium, Itanium Inside, Pentium, Pentium Inside, vPro Inside, Xeon, Xeon Phi, and Xeon Inside are trademarks of Intel Corporation in the U.S. and/or other countries. Other company, product and service names may be trademarks or service marks of others. Visit www.lenovo.com/lenovo/us/en/safecomp/ periodically for the latest information on safe and effective computing. ©2017 Lenovo. All rights reserved.



Lenovo™