

# Inspiron 3662

## Setup and Specifications

**Computer Model:** Inspiron 3662  
**Regulatory Model:** D20M  
**Regulatory Type:** D20M002



# Notes, cautions, and warnings

---



**NOTE:** A NOTE indicates important information that helps you make better use of your product.



**CAUTION:** A CAUTION indicates either potential damage to hardware or loss of data and tells you how to avoid the problem.



**WARNING:** A WARNING indicates a potential for property damage, personal injury, or death.

---

**Copyright © 2016 Dell Inc. or its subsidiaries. All rights reserved.** Dell, EMC, and other trademarks are trademarks of Dell Inc. or its subsidiaries. Other trademarks may be trademarks of their respective owners.

2016 - 12

Rev. A00

# Contents

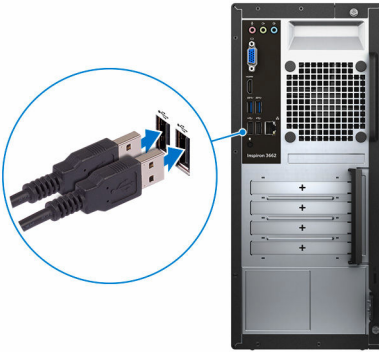
- Set up your computer..... 4**
- Views..... 9**
  - Front..... 9
  - Back.....10
  - Back panel..... 11
- Specifications.....13**
  - Dimensions and weight..... 13
  - System information..... 13
  - Memory..... 13
  - Ports and connectors..... 14
  - Media-card reader..... 14
  - Communications..... 15
  - Audio..... 15
  - Storage..... 15
  - Power adapter..... 15
  - Video..... 16
  - Computer environment..... 16
- Getting help and contacting Dell.....17**
  - Self-help resources..... 17
  - Contacting Dell.....17



# Set up your computer

---

- 1 Connect the keyboard and mouse.  
See the documentation that shipped with the keyboard and mouse.



- 2 Connect the network cable—optional.



- 3** Connect the display.



- 4** Connect the power cable.



- 5** Press the power button.



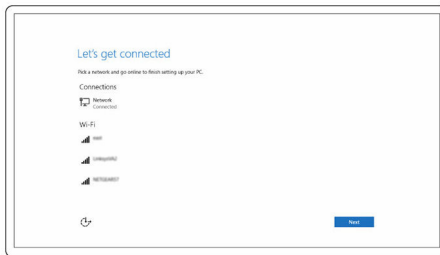
## 6 Finish operating system setup.

### For Windows:

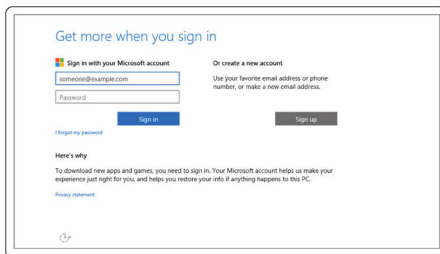
- a) Connect to your network.



**NOTE: If you are connecting to a secured wireless network, enter the password for the wireless network access when prompted.**



- b) Sign-in to your Microsoft account or create a local account.



### For Ubuntu:

Follow the instructions on the screen to finish setup.



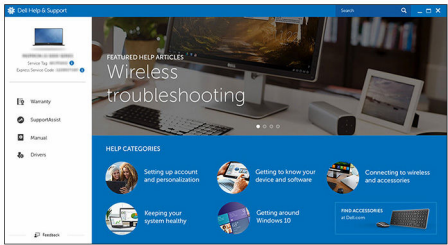
7 Locate Dell apps in Windows.

**Table 1. Locate Dell apps**



Register your computer

Dell Help & Support



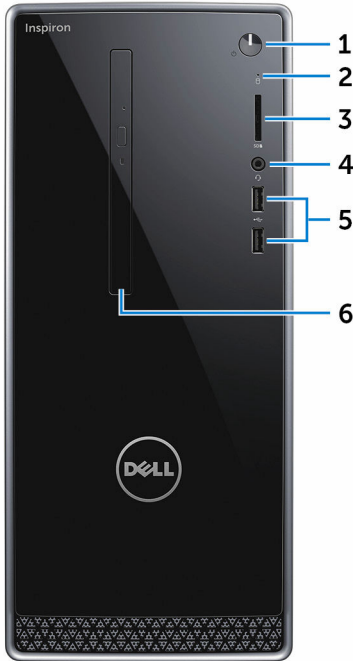
SupportAssist — Check and update your computer



# Views

---

## Front



### 1 Power button

Press to turn on the computer if it is turned off, in sleep state, or in hibernate state.

Press to put the computer in sleep state if it is turned on.

Press and hold for 4 seconds to force shut-down the computer.



**NOTE:** You can customize the power-button behavior in Power Options. For more information, see *Me and My Dell* at [www.dell.com/support/manuals](http://www.dell.com/support/manuals).

### 2 Hard-drive activity light



Turns on when the computer reads from or writes to the hard drive.

3 **Media-card reader**

Reads from and writes to media cards.

4 **Headset port**

Connect a headphone or a headset (headphone and microphone combo).

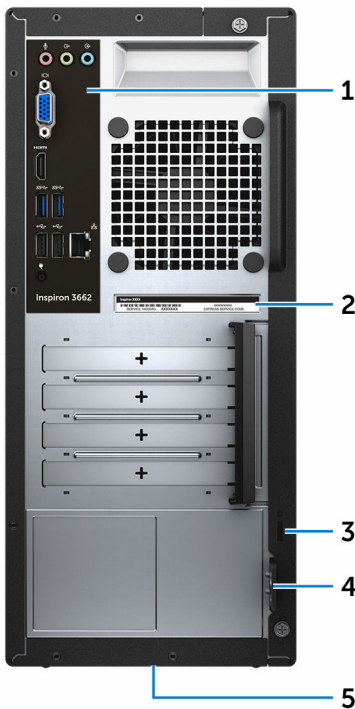
5 **USB 2.0 ports (2)**

Connect peripherals such as storage devices and printers. Provides data transfer speeds up to 480 Mbps.

6 **Optical drive (optional)**

Reads from and writes to CDs and DVDs.

## Back



## 1 **Back panel**

Connect USB, audio, video, and other devices.

## 2 **Service Tag label**

The Service Tag is a unique alphanumeric identifier that enables Dell service technicians to identify the hardware components in your computer and access warranty information.

## 3 **Security-cable slot**

Connect a security cable to prevent unauthorized movement of your computer.

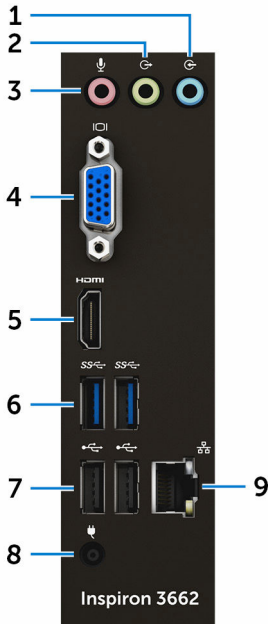
## 4 **Padlock rings**

Attach a padlock to prevent unauthorized access to the interior of your computer.

## 5 **Regulatory label**

Contains regulatory information of your computer.

# Back panel



1 **Line-in port**

Connect recording or playback devices such as CD player.

2 **Line-out port**

Connect speakers.

3 **Microphone port**

Connect an external microphone to provide sound input.

4 **VGA port**

Connect an external display or a projector.

5 **HDMI port**

Connect a TV or another HDMI-in enabled device. Provides video and audio output.

6 **USB 3.0 ports (2)**

Connect peripherals such as storage devices and printers. Provides data transfer speeds up to 5 Gbps.

7 **USB 2.0 ports (2)**

Connect peripherals such as storage devices and printers. Provides data transfer speeds up to 480 Mbps.

8 **Power-adaptor port**

Connect a power adaptor to provide power to your computer.

9 **Network port (with lights)**

Connect an Ethernet (RJ45) cable from a router or a broadband modem for network or internet access.

The two lights next to the connector indicate the connectivity status and network activity.

# Specifications

---

## Dimensions and weight

**Table 2. Dimensions and weight**

Height	352.90 mm (13.90 in)
Width	154 mm (6.06 in)
Depth	303 mm (11.93 in)
Weight	4.30 kg (9.48 lb)



**NOTE: The weight of your computer varies depending on the configuration ordered and the manufacturing variability.**

## System information

**Table 3. System information**

Computer model	Inspiron 3662
Processor	<ul style="list-style-type: none"><li>• Intel Pentium</li><li>• Intel Celeron</li></ul>
Chipset	Integrated in the processor

## Memory

**Table 4. Memory specifications**

Slots	Two SODIMM slots
Type	DDR3L
Speed	1600 MHz
Configurations supported	2 GB, 4 GB, 6 GB, and 8 GB



# Ports and connectors

**Table 5. Ports and connectors**

**External:**

Network	One RJ45 port
USB	<ul style="list-style-type: none"><li>• Four USB 2.0 ports</li><li>• Two USB 3.0 ports</li></ul>
Audio/Video	<ul style="list-style-type: none"><li>• One headset port</li><li>• One microphone port</li><li>• One line-out port</li><li>• One line-in port</li><li>• One VGA port</li><li>• One HDMI port</li></ul>

**Internal:**

M.2 card	One M.2 card slot for Wi-Fi and Bluetooth combo card
----------	------------------------------------------------------

## Media-card reader

**Table 6. Media-card reader specifications**

Type	One 5-in-1 slot
Cards supported	<ul style="list-style-type: none"><li>• SD card</li><li>• SD High Capacity (SDHC) card</li><li>• SD Extended Capacity (SDXC) card</li><li>• MultiMediaCard (MMC)</li><li>• MultiMediaCard Plus (MMC Plus)</li></ul>



# Communications

**Table 7. Supported Communications**

Ethernet	10/100 Mbps Ethernet controller integrated on system board
Wireless	<ul style="list-style-type: none"><li>• Wi-Fi 802.11ac/n</li><li>• Bluetooth 4.0</li></ul>

# Audio

**Table 8. Audio specifications**

Controller	Realtek ALC3820
Type	Integrated 5.1 channel Intel High Definition Audio

# Storage

**Table 9. Storage specifications**

Interface	<ul style="list-style-type: none"><li>• SATA 1.5 Gbps for optical drive</li><li>• SATA 6 Gbps for hard drive</li></ul>
Hard drive	One 2.5-inch/3.5-inch hard drive
Optical drive (optional)	One 9.5-mm DVD+/-RW drive

# Power adapter

**Table 10. Power adapter specifications**

Type	65 W
Input current (maximum)	1.70 A
Output current (continuous)	3.34 A



Input Voltage	100 VAC to 240 VAC
Input frequency	50 Hz to 60 Hz
Rated output voltage	19.50 VDC
Temperature range: Operating	0°C to 40°C (32°F to 104°F)
Temperature range: Storage	–40°C to 70°C (–40°F to 158°F)

## Video

**Table 11. Video specifications**

	Integrated
Controller	Intel HD Graphics
Memory	Shared system memory

## Computer environment

Airborne contaminant level: G2 or lower as defined by ISA-S71.04-1985

Relative humidity (maximum): 20% to 80% (non-condensing)

**Table 12. Computer environment**

	Operating	Storage
Temperature range	10°C to 35°C (50°F to 95°F)	–40°C to 65°C (–40°F to 149°F)
Vibration (maximum)*	0.25 GRMS	2.20 GRMS
Shock (maximum)	40 G for 2 ms with a change in velocity of 20 in/s (51 cm/s)†	50 G for 26 ms with a change in velocity of 320 in/s (813 cm/s)‡
Altitude (maximum)	–15.24 m to 3048 m (–50 ft to 10,000 ft)	–15.24 m to 10,668 m (–50 ft to 35,000 ft)

\* Measured using a random vibration spectrum that simulates user environment.

† Measured using a 2 ms half-sine pulse when the hard drive is in use.

‡ Measured using a 2 ms half-sine pulse when the hard-drive head is in parked position.





# Getting help and contacting Dell

---

## Self-help resources

You can get information and help on Dell products and services using these self-help resources:

**Table 13. Self-help resources**

Information about Dell products and services	<a href="http://www.dell.com">www.dell.com</a>
Dell Help & Support app	
Get started app	
Accessing help	In Windows search, type Help and Support, and press Enter.
Online help for operating system	<a href="http://www.dell.com/support/windows">www.dell.com/support/windows</a> <a href="http://www.dell.com/support/linux">www.dell.com/support/linux</a>
Troubleshooting information, user manuals, setup instructions, product specifications, technical help blogs, drivers, software updates, and so on.	<a href="http://www.dell.com/support">www.dell.com/support</a>
Learn about your operating system, setting up and using your computer, data backup, diagnostics, and so on.	See <i>Me and My Dell</i> at <a href="http://www.dell.com/support/manuals">www.dell.com/support/manuals</a> .

## Contacting Dell

To contact Dell for sales, technical support, or customer service issues, see [www.dell.com/contactdell](http://www.dell.com/contactdell).





**NOTE:** Availability varies by country and product, and some services may not be available in your country.



**NOTE:** If you do not have an active internet connection, you can find contact information on your purchase invoice, packing slip, bill, or Dell product catalog.