

ideapad 320

L I F E J U S T G O T E A S I E R .

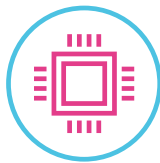
Everything about the Lenovo™ IdeaPad™ 320 is designed to simplify your life. It will handle any task with ease, thanks to powerful processing and discrete graphics options. Preloaded with Windows 10 Home, you'll have the personal assistance of Cortana, designed to help open apps and answer your questions—whether typed or spoken. From the new streamlined design to a cleaner desktop interface, you'll enjoy the simplicity that Lenovo IdeaPad 320 offers. The biggest challenge you'll face is choosing your perfect color.

WHY YOU SHOULD BUY THE LENOVO IDEAPAD 320



Style built to last

The IdeaPad 320 features a sleek chassis with angled edges, and is available in six sophisticated tone-on-tone color options: Platinum Grey, Onyx Black, Blizzard White, Denim Blue, Plum Purple and Coral Red. Better yet, the IdeaPad 320 is designed to keep up with you. We treated it with a special protective finish to guard against wear and tear, and added rubber detailing on the bottom cover to maximize ventilation and extend product life.



Powerful performance

Top-of-the-line 7th Generation Intel® Core™ i7 processing, plus up to 16 GB DDR4 memory, guarantee lightning-fast responsiveness. Run multiple programs simultaneously, and transition seamlessly between web tabs—you'll be able to multi-task with ease.



Lenovo™



Smooth graphics

The IdeaPad 320 offers a range of graphics options, including a powerful NVIDIA® GeForce® 940MX graphics card. Discrete graphics cards rely on their own processing power, so you'll experience smoother graphics, less screen tearing and better gaming performance without compromising overall speed and responsiveness. Whether you're playing a game, creating, or editing content, you'll enjoy crisp visuals.



Brilliant FHD resolution

The IdeaPad 320 offers up to Full High-Definition resolution in three screen sizes – 14", 15" and 17". Featuring anti-glare technology, you'll enjoy true visual clarity when you watch movies, browse the web and more. Also available with touchscreen.



WWW.LENOVO.COM



ideapad 320

SPECIFICATIONS

Lenovo IdeaPad 320-14IKB*, Lenovo IdeaPad 320-15IKB*, Lenovo IdeaPad 320 Touch-15IKB*, Lenovo IdeaPad 320-17IKB*

PERFORMANCE

Processor

7th Generation Intel® Core™ i7 Processor

Operating System

Windows 10 Home

Graphics

Intel® Integrated Graphics
NVIDIA® GeForce® 920MX
NVIDIA® GeForce® 940MX

Camera & Microphone

0.3M with Single Microphone
HD with Single Microphone

Memory

4 GB DDR4 On-board,
16 GB Maximum via One Memory Slot

Storage

320-14IKB

Up to 512 GB SATA SSD; or
Up to 2 TB SATA HDD; or
Up to 256 GB SATA SSD + 1 TB SATA HDD

320-15IKB, 320-17IKB

Up to 512 GB SATA SSD; or
Up to 2 TB SATA HDD; or
128 GB PCIe SSD +
1 TB SATA HDD + ODD; or
16 GB Intel® Optane™ SSD +
1 TB SATA HDD + ODD; or
Up to 256 GB SATA SSD + 1 TB SATA HDD

320 Touch-15IKB

Up to 512 GB SATA SSD; or
Up to 2 TB SATA HDD; or
Up to 256 GB SATA SSD + 1 TB SATA HDD

Audio

2 x 1.5W Speakers with Dolby Audio™

Battery¹

Up to 6 Hours

¹ All battery life claims are approximate and based on test results using the MobileMark™ 2014 ver 1.5 battery life benchmark test. Actual results will vary, and depend on numerous factors including product configuration and usage, software, operating conditions, wireless functionality, power management settings, screen brightness and other factors. The maximum capacity of the battery will naturally decrease with time and usage. See <https://bapccom.com/products/mobilemark-2014/> for additional details.

² Optional, enabled on 320-15IKB, 320 Touch-15IKB, and 320-17IKB.

³ Enabled on 320 Touch-15IKB, US only.

DESIGN

Display

320-14IKB

14" HD (1366 x 768) Anti-Glare
14" FHD (1920 x 1080) Anti-Glare

320-15IKB

15.6" HD (1366 x 768) Anti-Glare
15.6" FHD (1920 x 1080) Anti-Glare

320 Touch-15IKB

15.6" HD (1366 x 768) Glossy

320-17IKB

17.3" HD+ (1600 x 900) Glossy
17.3" HD+ (1600 x 900) Anti-Glare
17.3" FHD (1920 x 1080) IPS Anti-Glare

Dimensions (W x D x H)

320-14IKB

(mm) : 338.3 x 249.9 x 22.7
(inches) : 13.3" x 9.8" x 0.89"

320-15IKB, 320 Touch-15IKB

(mm) : 378 x 260 x 22.9
(inches) : 14.9" x 10.2" x 0.9"

320-17IKB

(mm) : 418 x 292.6 x 24.9
(inches) : 16.4" x 11.5" x 0.98"

Weight

320-14IKB : Starting at 4.6 lbs (2.1 kg)
320-15IKB : Starting at 4.8 lbs (2.2 kg)
320 Touch-15IKB: Starting at 4.8 lbs (2.2 kg)
320-17IKB : Starting at 6.17 lbs (2.8 kg)

Additional Features

Fingerprint Reader²
Touchscreen³

Tone-on-Tone Color Options

320-14IKB

Platinum Grey; Onyx Black;
Blizzard White; Denim Blue

320-15IKB, 320 Touch-15IKB

Platinum Grey; Onyx Black; Blizzard White;
Denim Blue; Plum Purple; Coral Red

320-17IKB

Platinum Grey; Onyx Black

CONNECTIVITY

WLAN

1 x 1 WiFi 802.11 ac

Bluetooth®

Bluetooth® 4.1

I/O (Input/Output) Ports

1 x USB Type-C™
2 x USB 3.0
4-in-1 Card Reader
HDMI™
RJ45
Audio Jack

PRELOADED SOFTWARE

- Lenovo App Explorer
- Lenovo Companion 3.0
- Lenovo ID
- Lenovo Settings
- McAfee LiveSafe™ (30-day trial)
- Microsoft Office 365 (30-day trial)



Lenovo™

LENOVO SERVICES

Warranty Upgrades - On-site/ In-Home Service

Maximizes PC uptime and productivity by providing convenient, fast repair services in your own home.

Accidental Damage Protection

Avoid the hassles of unexpected repair costs. Provides coverage for non-warranted damage incurred under normal operating conditions, such as minor spills, drops or damage to the integrated screen.

Warranty Extensions (1-to-3 Years Total Duration)

This fixed-term, fixed-cost service helps accurately budget for PC expenses, protect your valuable investment and potentially lower the cost of ownership over time.

* Example of Lenovo IdeaPad catalogue naming convention



Intel® platform codes

Haswell: **IHW**, Broadwell: **IBD**, Broadwell U: **IBU**, Skylake: **ISK**, SkyLake U: **ISU**, KabyLake: **IKB**, Cannonlake: **ICN**, Baytrail: **IBY**, Braswell: **IBR**, Cherrytrail: **ICR**, Apollolake: **IAP**, GeminiLake: **IGM**



WWW.LENOVO.COM

Lenovo reserves the right to alter product offerings and specifications at any time, without notice. Lenovo makes every effort to ensure accuracy of all information but is not liable or responsible for any editorial, photographic or typographic errors. All images are for illustration purposes only. For full Lenovo product, service and warranty specifications visit www.lenovo.com. Lenovo makes no representations or warranties regarding third party products or services. **Trademarks:** The following are trademarks or registered trademarks of Lenovo: Lenovo, the Lenovo logo, ideapad, IdeaCentre, yoga and yoga home. Microsoft, Windows and Vista are registered trademarks of Microsoft Corporation. Ultrabook, Celeron, Celeron Inside, Core Inside, Intel, Intel Logo, Intel Atom, Intel Atom Inside, Intel Core, Intel Inside, Intel Inside Logo, Intel vPro, Itanium, Itanium Inside, Pentium, Pentium Inside, vPro Inside, Xeon, Xeon Phi, and Xeon Inside are trademarks of Intel Corporation in the U.S. and/or other countries. Other company, product and service names may be trademarks or service marks of others. Visit www.lenovo.com/lenovo/us/en/safecomp/ periodically for the latest information on safe and effective computing. ©2017 Lenovo. All rights reserved.



OPTIONS & ACCESSORIES



Lenovo 300
Wireless Compact
Mouse



Lenovo 500
Extra Bass
In-ear Headphones



Lenovo 500 2.0
Bluetooth® Speaker