

## Datasheet

# HP 260 G2 Desktop Mini PC



## Small size, big performance, affordable price

The fully functional HP 260 Desktop Mini PC delivers the benefit of space saving design that can grow with your business and is equipped with the essential tools you need at an affordable price.



## HP recommends Windows 10 Pro.

- Windows 10 Pro<sup>1</sup>
- 6th Generation Intel® Core™ Processors<sup>2</sup>

### Work confidently without the cost

- Get the affordably priced business ready desktop mini with the accessories<sup>3</sup> and optional HP services<sup>3</sup> you need plus power saving processors to help lower energy costs.

### Small design, big versatility

- The industrial design of the compact desktop mini with flexible mounting options<sup>3</sup> and optional accessories<sup>3</sup> help support a versatile range of use cases from desktop to public computing to digital signage.

### Powered to perform

- Accomplish tasks with 6th Gen Intel® processors<sup>2</sup> and Intel® HD Graphics<sup>3</sup> with the option to scale up to Core™ i5<sup>2</sup> and up to 32GB of DDR4 memory<sup>3</sup> if your workload demands it.

### Ready to grow

- The system of accessories and expansion capabilities of the HP 260 Desktop Mini provide multiple options within one line of products to fit the needs of your diverse work environment.

### Featuring

- Help secure the future of your business. PCs from HP make the most of Windows 10 Pro<sup>1</sup> to protect you from today's security threats and maximize management and productivity features for business.
- Do your part to reduce energy use and costs with processors that help consume less than half the energy of those in other mini PCs.
- Take advantage of expandable and compatible HP mini accessories. Expand storage options,<sup>3</sup> add legacy ports with expansion modules, help secure your device with security mounts,<sup>3</sup> or take back your desk space with stands and work centers.<sup>3</sup>
- Do more on dual displays with an HDMI port and full HD VGA port, plus use 6 USB ports to plug in all the peripherals you need.
- Help keep your investment safe and conveniently power up your desktop mini directly from the keyboard so you don't have to open enclosures or strain for the power button when it's out of reach.
- Choose a standard hard drive or upgrade to a speedy and reliable solid state drive.<sup>3</sup>
- Easily secure your system in a safe place. The lightweight desktop mini is easy to carry and store.
- The embedded Trusted Platform Module (TPM) provides hardware-based encryption to help secure your data and deter attacks from viruses and malware.

# HP 260 G2 Desktop Mini PC Specifications Table

**HP recommends Windows 10 Pro.**



<b>Form Factor</b>	Mini
<b>Available Operating System</b>	Windows 10 Pro 64 <sup>1</sup> Windows 10 Home 64 <sup>1</sup> Windows 7 Professional 64 (available through downgrade rights from Windows 10 Pro) <sup>2</sup> Windows 7 Professional 32 (available through downgrade rights from Windows 10 Pro) <sup>2</sup> Windows 7 Professional 64 <sup>3</sup> Windows 7 Professional 32 <sup>3</sup> FreeDOS 2.0
<b>Available Processors<sup>4,13</sup></b>	Intel® Core™ i5-6200U with Intel HD Graphics 520 (2.3 GHz, up to 2.8 GHz with Intel Turbo Boost, 3 MB cache, 2 cores); Intel® Core™ i3-6100U with Intel HD Graphics 520 (2.3 GHz, 3 MB Cache, 2 cores); Intel® Pentium® 4405U with Intel HD Graphics 510 (2.1 GHz, 2 MB cache, 2 cores); Intel® Celeron® 3855U with Intel HD Graphics 510 (1.6 GHz, 2 MB cache, 2 cores)
<b>Chipset</b>	Chipset integrated on processor
<b>Maximum Memory</b>	Up to 32 GB DDR4-2133 SDRAM <sup>5</sup>
<b>Memory slots</b>	2 SODIMM
<b>Internal Storage</b>	500 GB up to 1 TB SATA (5400 rpm) <sup>6</sup> 128 GB up to 256 GB SATA SSD <sup>6</sup>
<b>Available Graphics</b>	Integrated: Intel® HD Graphics 520; Intel® HD Graphics 510 <sup>8</sup> (Integrated graphics will depend on processor)
<b>Audio</b>	Integrated HD audio card with Realtek ALC221 codec (4 channel with multi-streaming) and 1.5W 4 ohm speaker
<b>Communications</b>	LAN: Integrated Realtek RTL8161GH-CG GbE LOM WLAN: HP 802.11b/g/n (1x1) M.2 wireless (optional) <sup>7</sup>
<b>Expansion Slots</b>	1 M.2 (M.2 slot for optional wireless LAN module)
<b>Ports and Connectors</b>	Front: 2 USB 3.0; 1 headphone/line-out jack; 1 microphone/line-in jack Back: 2 USB 3.0; 2 USB 2.0; 1 HDMI 1.4; 1 VGA; 1 RJ-45
<b>Internal Drive Bays</b>	One 3,5 cm (2.5") HDD
<b>Input Device</b>	HP USB Business Slim Keyboard; HP USB Keyboard; HP USB Value Keyboard; HP Wireless Business Slim Keyboard and Mouse; HP Wireless Keyboard and Mouse <sup>9</sup> HP USB Hardened Mouse; HP USB Mouse; HP USB Optical Mouse; HP Wireless Business Slim Keyboard and Mouse; HP Wireless Keyboard and Mouse <sup>9</sup>
<b>Available Software</b>	HP business PCs are shipped with a variety of software titles including: HP Support Assistant, HP ePrint Driver, Cyberlink Power DVD, Microsoft Security Essentials. Please refer to this product's quick spec document for a full list of preinstalled software. <sup>10,11</sup>
<b>Security Management</b>	Security lock slot; Padlock loop; Trusted Platform Module (TPM) 1.2, SLB9660TT1.2, Common Criteria EAL4+ certified
<b>Power</b>	65 W 89% efficient, active PFC (external)
<b>Dimensions</b>	177 x 175 x 34 mm
<b>Weight</b>	1.05 kg (Exact weight depends on configuration)
<b>Energy Efficiency Compliance</b>	ENERGY STAR® certified and EPEAT® Gold registered configurations available <sup>12</sup>
<b>Warranty</b>	On-site warranty: One-year (1-1-1) limited warranty delivers one year of on-site, next business day service for parts and labor and includes free telephone support 24 x 7. One-year onsite and labor are not available in all countries. Service offers terms up to 5 years by choosing a Care Pack. To choose the right level of service for your HP product, visit HP Care Pack Central: <a href="http://www.hp.com/go/cpc">www.hp.com/go/cpc</a>

# HP 260 G2 Desktop Mini PC

Accessories and services (not included)

**HP recommends Windows 10 Pro.**



### HP 16GB SODIMM DDR4 Memory

**P1N55AA**

Boost the capabilities of your HP Business Desktop PC and improve system performance and application responsiveness with low-power, high-speed DDR4 memory from HP.



### HP USB Optical Scroll Mouse

**QY777AA**

Utilizing the latest optical sensing technology, the HP USB Optical Scroll Mouse records precise motion over a variety of surfaces without a mouse pad.



### HP Desktop Mini Security/Dual VESA Sleeve

**G1K22AA**

Wrap your HP Desktop Mini PC in the HP Desktop Mini Security/Dual VESA Sleeve to securely mount your PC behind your display, position your solution on a wall, and lock it down with the optional HP Ultra-Slim Cable Lock.



### HP Desktop Mini DVD ODD Module

**K9Q83AA**

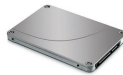
Add a DVD Writer to your HP Desktop Mini PC with HP Desktop Mini DVD Writer ODD Module.



### HP 8GB SODIMM DDR4 Memory

**P1N54AA**

Boost the capabilities of your HP Business Desktop PC and improve system performance and application responsiveness with low-power, high-speed DDR4 memory from HP.



### HP 128 GB SATA 6 Solid State Drive

**QV063AA**

Boost the performance and robustness of your HP Business Desktop PC with an HP Solid State Drive. The HP Solid State Drives are a drop-in replacement for the 2.5-inch or 3.5-inch (with bracket) hard disk drive of some HP Compaq Business Desktop PCs providing many performance and durability improvements over traditional Hard Disk Drive (HDD) technology.



### HP Desktop Mini Rack Mount Tray Kit Module

**G1K21AA**

Put your HP Desktop Mini PCs to work behind the scenes with HP Desktop Mini Rack Mount Tray Kit Modules, which holds up to eight PCs and fit into the HP 100kg Sliding Shelf.



### HP Desktop Mini 500GB Hard Drive I/O Module

**K9Q82AA**

Add an extra hard drive to your HP Desktop Mini PC and enable compatibility with your existing and legacy peripherals with the HP Desktop Mini 500GB HDD/I/O Module.



### HP Wireless Slim Business Keyboard

**N3R88AA**

Enjoy easy data entry and wireless connectivity with the HP Wireless Business Slim Keyboard, designed to complement the 2015 class of HP Business PCs.



### HP USB Slim Business Keyboard

**N3R87AA**

Get fast data entry and quick USB connectivity with the HP USB Business Slim Keyboard, designed to complement the 2015 class of HP Business PCs.



### HP Quick Release

**EM870AA**

A secure and easy-to-use mounting solution for your VESA-compliant HP thin clients, compatible HP flat panel monitors and other HP desktop products. Attach to any a compatible stand, bracket or wall mount and make the most of your workspace.



### HP Desktop Mini Chassis Tower Stand

**G1K23AA**

Keep it vertical. Make the most of space-constrained environments by deploying your HP Desktop Mini in a vertical orientation with the HP Desktop Mini Chassis Tower Stand.



### HP 3 year Next business day Onsite Desktop Only Hardware Support

**U6578E**



## HP Business Headset v2

### T4E61AA

Quickly and easily collaborate, chat online or listen to personal media with the crystal-clear sound and noise cancelling features of the sleek, lightweight HP Business Headset v2, designed to complement your professional workspace.<sup>1,2</sup>

# HP 260 G2 Desktop Mini PC

**HP recommends Windows 10 Pro.**

## Messaging Footnotes

<sup>1</sup> Not all features are available in all editions or versions of Windows. Systems may require upgraded and/or separately purchased hardware, drivers, software or BIOS update to take full advantage of Windows functionality. Windows 10 is automatically updated, which is always enabled. ISP fees may apply and additional requirements may apply over time for updates. See <http://www.microsoft.com>.

<sup>2</sup> Multi-Core is designed to improve performance of certain software products. Not all customers or software applications will necessarily benefit from use of this technology. Performance and clock frequency will vary depending on application workload and your hardware and software configurations. Intel's numbering is not a measurement of higher performance.

<sup>3</sup> Sold separately or as optional features.

## Technical specifications disclaimers

<sup>1</sup> Not all features are available in all editions or versions of Windows. Systems may require upgraded and/or separately purchased hardware, drivers, software or BIOS update to take full advantage of Windows functionality. Windows 10 is automatically updated, which is always enabled. ISP fees may apply and additional requirements may apply over time for updates. See <http://www.microsoft.com>.

<sup>2</sup> This system is preinstalled with Windows 7 Professional software and also comes with a license and media for Windows 10 Pro software. You may only use one version of the Windows software at a time. Switching between versions will require you to uninstall one version and install the other version. You must back up all data (files, photos, etc.) before uninstalling and installing operating systems to avoid loss of your data.

<sup>3</sup> Not all features are available in all editions or versions of Windows. Systems may require upgraded and/or separately purchased hardware, drivers, software or BIOS update to take full advantage of Windows functionality. See <http://www.microsoft.com>.

<sup>4</sup> Multicore is designed to improve performance of certain software products. Not all customers or software applications will necessarily benefit from use of this technology. Performance and clock frequency will vary depending on application workload and your hardware and software configurations. Intel's numbering is not a measurement of higher performance.

<sup>5</sup> Maximum memory capacities assume Windows 64-bit operating systems or Linux. With Windows 32-bit operating systems, memory above 3 GB may not all be available due to system resource requirements.

<sup>6</sup> For storage drives, GB = 1 billion bytes. Actual formatted capacity is less. Up to 16 GB (for Windows 7) and 30 GB (for Windows 8.1 and 10) of system disk is reserved for the system recovery software.

<sup>7</sup> Wireless cards are optional or add-on features and requires separately purchased wireless access point and internet service. Availability of public wireless access points limited.

<sup>8</sup> HD content required to view HD images.

<sup>9</sup> Optional or add-on features.

<sup>10</sup> ePrint requires an Internet connection to HP web-enabled printer and HP ePrint account registration (for a list of eligible printers, supported documents and image types and other HP ePrint details, see [www.hpconnected.com](http://www.hpconnected.com)).

<sup>11</sup> HP Support Assistant requires Windows 7 or later edition or Linux and internet access.

<sup>12</sup> EPEAT® registered where applicable. EPEAT registration varies by country. See [www.epeat.net](http://www.epeat.net) for registration status by country.

<sup>13</sup> The following applies to HP systems with Intel Skylake or next-generation silicon chip-based system shipping with Windows 7, Windows 8, Windows 8.1 or Windows 10 Pro systems downgraded to Windows 7 Professional, Windows 8 Pro, or Windows 8.1: This version of Windows running with the processor or chipsets used in this system has limited support from Microsoft. For more information about Microsoft's support, please see Microsoft's Support Lifecycle FAQ at <https://support.microsoft.com/lifecycle>

## Sign up for updates

[www.hp.com/go/getupdated](http://www.hp.com/go/getupdated)

© Copyright 2017 HP Development Company, L.P. The information contained herein is subject to change without notice. The only warranties for HP products and services are set forth in the express warranty statements accompanying such products and services. Nothing herein should be construed as constituting an additional warranty. HP shall not be liable for technical or editorial errors or omissions contained herein.

ENERGY STAR and the ENERGY STAR mark are registered trademarks owned by the U.S. Environmental Protection Agency. Intel, Core, Celeron and Pentium are trademarks of Intel Corporation in the U.S. and other countries. All other trademarks are the property of their respective owners.

