

Philips  
LCD monitor with  
SoftBlue Technology

## E Line

22 (21.5" / 54.6 cm diag.)  
Full HD (1920 x 1080)

227E7ESB



# SoftBlue Technology

for the wellbeing of your eyes

Designed for you: The elegant new Philips E-line monitor features new SoftBlue Technology to protect your eyes and deliver brilliant colorful images.

### Superb Picture Quality

- SoftBlue Technology easy on the eyes and maintains color
- AH-IPS display gives awesome images with wide viewing angles
- 16:9 Full HD display for crisp detailed images
- Less eye fatigue with Flicker-free technology
- SmartImage Lite for easy optimized image settings
- SmartContrast for deep black level details

### Elegant Design

- EasySelect menu toggle key for quick on-screen menu access
- Elegant, slim design complements your home decor
- Superb glossy finish enhance your home decoration



# PHILIPS

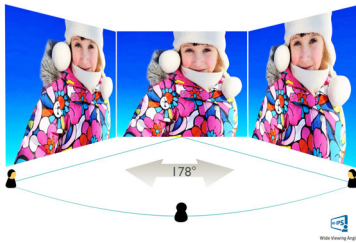
# Highlights

## SoftBlue Technology



SoftBlue LED technology uses a smart technology to reduce harmful shortwave blue light without affecting the color or image of the display. SoftBlue LED technology is certified by international testing organizations TUV Rheinland to reduce harmful blue light.

## AH-IPS technology



AH-IPS displays use an advanced technology which gives you extra wide viewing angles of 178/178 degree, making it possible to view the display from almost any angle. Unlike standard TN panels, AH-IPS displays gives you remarkably crisp images with vivid colors, making it ideal not only for Photos, movies and web browsing, but also for professional applications which demand color accuracy and consistent brightness at all times.

## 16:9 Full HD display



Picture quality matters. Regular displays deliver quality, but you expect more. This display features enhanced Full HD 1920 x 1080 resolution. With Full HD for crisp detail paired with high brightness, incredible contrast and realistic colors expect a true to life picture.

## Flicker-free technology



Due to the way brightness is controlled on LED-backlit screens, some users experience flicker on their screen which causes eye fatigue. Philips Flicker-free Technology applies a new solution to regulate brightness and reduce flicker for more comfortable viewing.

## SmartImage Lite

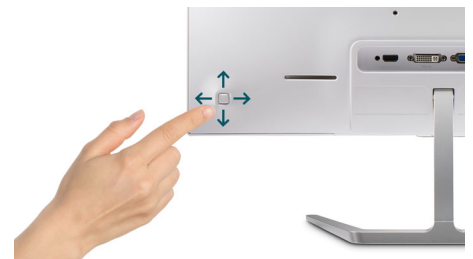
SmartImage Lite is an exclusive, leading edge Philips technology that analyzes the content displayed on your screen. Based on a scenario you select, SmartImage Lite dynamically enhances the contrast, color saturation and sharpness of images and videos for ultimate display performance - all in real time with the press on a single button.

## SmartContrast



SmartContrast is a Philips technology that analyzes the contents you are displaying, automatically adjusting colors and controlling backlight intensity to dynamically enhance contrast for the best digital images and videos or when playing games where dark hues are displayed. When Economy mode is selected, contrast is adjusted and backlighting fine-tuned for just-right display of everyday office applications and lower power consumption.

## EasySelect Menu Toggle Key



The discreetly placed EasySelect Menu Toggle Key allows you to make quick and easy adjustments to monitor settings in the On-Screen Display menu.



## TUV Certified Low Blue Light

Philips displays with SoftBlue LED technology are certified by TUV Rheinland Low Blue Light testing standard (2PFG) to reduce harmful blue light.



# Specifications

## Picture/Display

- LCD panel type: AH-IPS LCD
- Backlight type: W-LED system
- Panel Size: 21.5 inch / 54.6 cm
- Effective viewing area: 476.06 (H) x 267.79 (V)
- Aspect ratio: 16:9
- Optimum resolution: 1920 x 1080 @ 60Hz
- Response time (typical): 5 ms (Gray to Gray)\*
- Brightness: 250 cd/m<sup>2</sup>
- Contrast ratio (typical): 1000:1
- SmartContrast: 20,000,000:1
- Pixel pitch: 0.248 x 0.248 mm
- Viewing angle: 178° (H) / 178° (V), @ C/R > 10
- Flicker-free
- Picture enhancement: SmartImage Lite
- Display colors: 16.7 M
- Scanning Frequency: 30 -83 kHz (H) / 56 -76 Hz (V)
- SoftBlue
- sRGB

## Connectivity

- Signal Input: VGA (Analog ), DVI-D (digital, HDCP)
- Sync Input: Separate Sync, Sync on Green

## Convenience

- User convenience: Power On/Off, Menu, 4:3 / Wide, Input, SmartImage lite
- OSD Languages: Brazil Portuguese, Czech, Dutch, English, Finnish, French, German, Greek, Hungarian, Italian, Japanese, Korean, Polish, Portuguese, Russian, Simplified Chinese, Spanish, Swedish, Traditional Chinese, Turkish, Ukrainian
- Other convenience: Kensington lock, VESA mount (100x100mm)
- Plug & Play Compatibility: DDC/CI, Mac OS X, sRGB, Windows 10 / 8.1 / 8 / 7

## Stand

- Tilt: -5/20 degree

## Power

- On mode: 16.11 W (typ.) (EnergyStar 6.0 test method)
- Standby mode: 0.5 W (typ.)
- Off mode: 0.3 W (typ.)
- Power LED indicator: Operation - White, Standby mode- White (blinking)
- Power supply: External, 100-240VAC, 50-60Hz

## Dimensions

- Product with stand (mm): 499 x 398 x 213 mm
- Product without stand (mm): 499 x 306 x 50 mm
- Packaging in mm (WxHxD): 567 x 455 x 124 mm

## Weight

- Product with stand (kg): 2.96 kg
- Product without stand (kg): 2.71 kg
- Product with packaging (kg): 4.67 kg

## Operating conditions

- Temperature range (operation): 0°C to 40°C °C
- Temperature range (storage): -20°C to 60°C °C
- Relative humidity: 20%-80 %
- Altitude: Operation: +12,000ft (3,658m), Non-operation: +40,000ft (12,192m)
- MTBF: 50,000 (excluding backlight) hour(s)

## Sustainability

- Environmental and energy: EnergyStar 6.0, EPEAT Silver, RoHS, Lead-free, Mercury Free
- Recyclable packaging material: 100 %

## Compliance and standards

- Regulatory Approvals: CE Mark, CECP, WEEE, TCO certified, CCC

## Cabinet

- Color: Black
- Finish: Glossy



Issue date 2017-11-16

Version: 1.0.1

12 NC: 8670 001 37355  
EAN: 69 51613 91055 9

© 2017 Koninklijke Philips N.V.  
All Rights reserved.

Specifications are subject to change without notice.  
Trademarks are the property of Koninklijke Philips N.V.  
or their respective owners.

[www.philips.com](http://www.philips.com)

\* "AH-IPS" word mark / trademark and related patents on technologies belong to their respective owners.  
\* Response time value equal to SmartResponse