

PHILIPS



Explore pendant

Hue White Ambiance

Dimmer switch included

E27

White

Smart control with Hue Bridge*



4300131P7



Light for your moments

Connect the Philips Hue White Ambiance Explore suspension light to your Philips Hue system and enjoy natural white light that helps you to wake up, energise, concentrate, read and relax. Designed to direct the light where you need it most.

Light for your moments

- Create your ambience with warm white to cool daylight
- Relax, read, concentrate and energise with light recipes
- Installation-free dimming
- Easy and wireless control with the dimmer switch (included)

Full control from a smart device with the Hue bridge

- Full control from a smart device with the Hue bridge
- Wake up and go to sleep naturally
- Smart control, home and away
- Set timers for your convenience

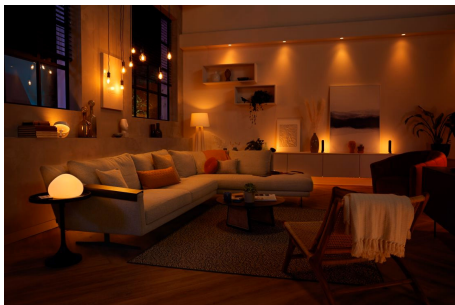
Highlights

Create your ambience



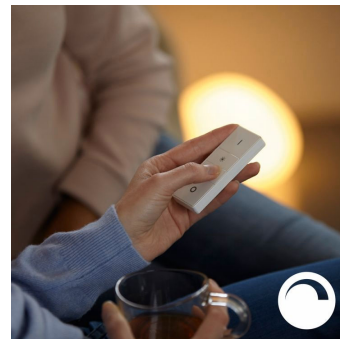
Set the right ambience for any moment and decorate your home with warm to cool white light. Enjoy different styles throughout the year, whether it's the crisp white light reminding you of a spring breeze, the warm white light of a summer sun or the ice cool daylight of winter.

Light for your daily routines



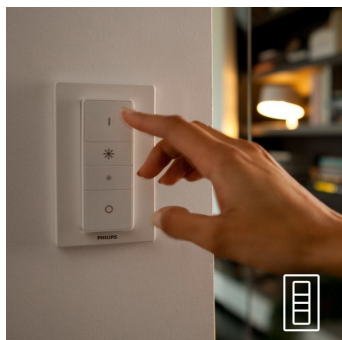
Light influences our mood and behaviour. Philips Hue can help you to customise your daily routines into moments that you can enjoy. Skip your morning coffee and get ready for the day with cool, bright-white daylight that helps to energise your body and mind. Stay focused with finely tuned bright-white light. Or put your feet up and relax with a soft glow of white light for the perfect end to the day.

Installation-free dimming



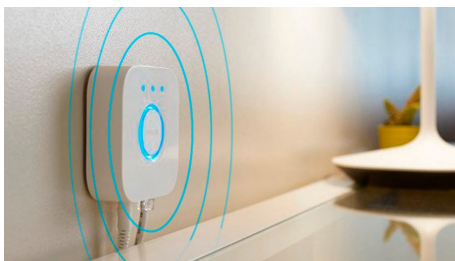
Experience guaranteed smooth dimming with Philips Hue. Not too bright. Not too dark. Just right. No need for wires, an electrician or installation

Dimmer switch (included)



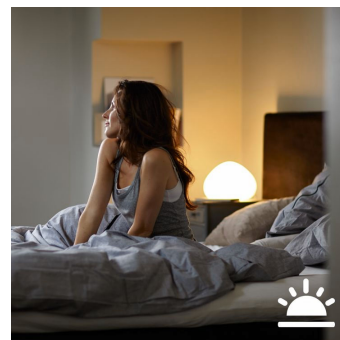
With the battery-powered dimmer switch for Philips Hue, you can control the light of your white ambience lamps easily. Cycle through the four different light scenes by simply pressing the on button, dim the light up or down and settle for ease of use. The dimmer switch can be placed anywhere in its small and elegant dock and needs no wiring. Use as a remote control or as a light switch against the wall and enjoy the right light recipe for every moment of your day. You can add up to 10 Hue lights to one dimmer switch.

Full control with the Hue bridge



Connect your Philips Hue lights with the bridge to unlock the endless possibilities of the system.

Wake up and go to sleep



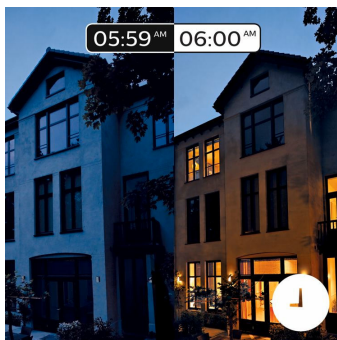
Philips Hue will help get you out of bed the way you like it, helping you to start your day feeling refreshed. The light brightness increases gradually, mimicking the effect of sunrise and helps you to wake up naturally, instead of being woken up by the loud sound of an alarm clock. Start your day the right way. In the evening, the relaxing warm white light helps you to unwind, relax and prepare your body for a good night's sleep.

Smart control, home and away



With the Philips Hue iOS and Android apps you can control your lights remotely, from wherever you are. Check if you have forgotten to switch your lights off before you left home, and switch them on if you are working late. Connection with the Philips Hue bridge is required for this functionality.

Timers for your convenience



Philips Hue can make it seem like you're at home when you're not, using the schedule function in the Philips Hue app. Set the lights to come on at a pre-set time, so the lights are on when you arrive home. You can even set rooms to light up at different times. And of course, you can let the lights turn off gradually during the night, so you never have to worry whether you've left any lights on. Connection with the Philips Hue bridge is required for this functionality.

Specifications

Design and finishing

- Colour: White
- Material: Glass

Durability

- Nominal lifetime: 25,000

Extra feature/accessory incl.

- Four light recipes: Yes
- Diffused light effect: Yes
- Dimmable with remote control: Yes
- Hue Switch: Yes
- Hue Switch Included: Yes
- LED integrated: No
- LED lamp(s) included: Yes
- Perfectly suited for creating ambience: Yes
- Upgradeable with Philips Hue Bridge: Yes
- ZigBee Light Link: Yes

Miscellaneous

- Especially designed for: Kitchen
- Type: Suspension Lights
- EyeComfort: No

Product dimensions and weight

- Net weight: 1.650 kg
- Height maximum: 2,430 mm
- Height minimum: 436 mm
- Length: 18.1 cm
- Width: 18.1 cm

Service

- Warranty: 2 year(s)

Technical specifications

- Total lumen output fixture (hidden): 806
- Lumen output bulb included: 806
- Light source equivalent to traditional bulb of: 60
- Total lumen output fixture: 806 lm
- Light colour: 2200-6500 Hue White Ambiance
- Mains power: 50-60 Hz
- Fitting/cap: E27
- Wattage bulb included: 9 W
- Maximum wattage replacement bulb: 9.5
- IP code: IP20 | Finger-protected
- Class of protection: Class II – Double Insulated
- Number of light sources: 1

What's supported

- Compatible with Effects feature: Yes
- Philips Hue App: IOS 15 and above, Android 10.0 and above
- WiFi: Works without Wi-Fi
- Defined support period: Minimum of 48 months after introduction date
- Max. number of accessories: 12 (with Hue Bridge)
- Communication protocol: Bluetooth, Zigbee

Box specifications

Packaging dimensions and weight

- EAN/UPC - product: 8718696168844
- Net weight: 1.65 kg
- Gross weight: 2.68 kg
- Height: 345 mm
- Length: 248 mm
- Width: 393 mm



© 2025 Signify Holding. All rights reserved. Signify does not give any representation or warranty as to the accuracy or completeness of the information included herein and shall not be liable for any action in reliance thereon. The information presented in this document is not intended as any commercial offer and does not form part of any quotation or contract, unless otherwise agreed by Signify. Philips and the Philips Shield Emblem are registered trademarks of Koninklijke Philips N.V.