

PHILIPS

hue

Lily Outdoor spot light

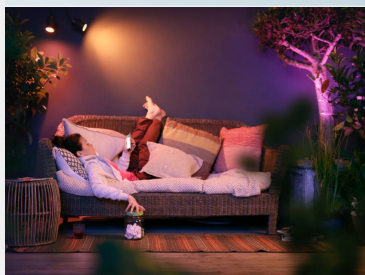
Hue White and Colour
Ambiance

LED integrated

White and coloured light

Low Volt system – extension

Smart control with Hue
Bridge*



1741530P7



Plug in and light up your outdoor space

Expand your existing Philips Hue Lily spot outdoor smart lighting set-up with this spotlight extension. Simply connect Lily smart outdoor spotlights into any standard wall socket to get millions of shades of white or coloured light in your garden. Power supply not included.

Limitless possibilities

- Paint your outdoors with 16 million colours
- Unwind with warm to cool white light
- Special light for special occasions

Easy control and comfort

- Set timers for your convenience
- Installation-free dimming
- Control it your way

Full control from a smart device with the Hue bridge

- Requires a Philips Hue bridge

Specially designed for your outdoor spaces

- Easy to install and extend
- Weather-proof (IP65)
- High-quality aluminium and superior synthetics

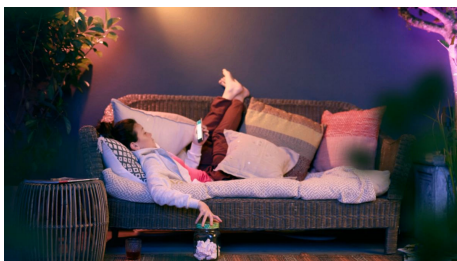
Highlights

Paint your outdoors



With Philips Hue outdoor lighting, there's no limit to the magic you can add. Play with 16 million colours and all shades of white light to create the effect you want. Highlight objects, trees or pathways to make your space stand out. Use the Hue app to save your favourite light settings and recall them whenever you want with the tap of a finger.

Warm to cool white light



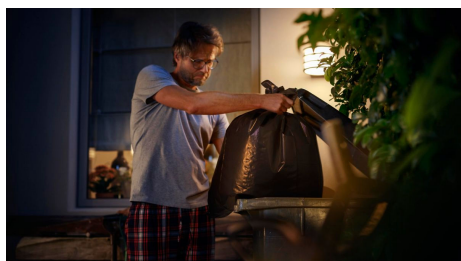
Extend your evenings with Philips Hue outdoor lighting. Set the right ambience on your patio, balcony or porch and relax. From the warm white light of a summer sun, to the ice cool daylight of winter: you can enjoy any shade of white light to fit your mood throughout the year.

Special light for special occasions



Holiday cheer starts here – with smart light! Use your Philips Hue lights to transform your home into a festive experience: bright reds and greens for Christmas, subtle pastels for spring or even an eerie purple glow to create the most haunted house on the street at Halloween.

Set timers for convenience



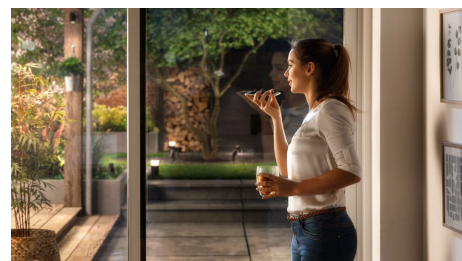
Enjoy longer evenings outside, finish the gardening or just take the rubbish out after sunset. Have your Philips Hue lights turn on automatically by setting schedules or using the sunset/sunrise routine. And of course, you can also turn off or dim your lights this way. You'll never have to worry whether you've left any lights on.

Installation-free dimming



Experience guaranteed smooth dimming with Philips Hue. Not too bright. Not too dark. Just right. To dim the lights, you don't need any wiring, an electrician or installation.

Control it your way



Connect your Philips Hue lights with the Bridge and start discovering the endless possibilities. Control your lights from your smartphone or tablet via the Philips Hue app, or add the indoor switches to your system to change your lights. Set timers, notifications, alarms and more for the full Philips Hue experience. Philips Hue even works with Amazon Alexa, Apple Homekit and the Google Assistant to allow you to control your lights with your voice.

Requires a Philips Hue bridge



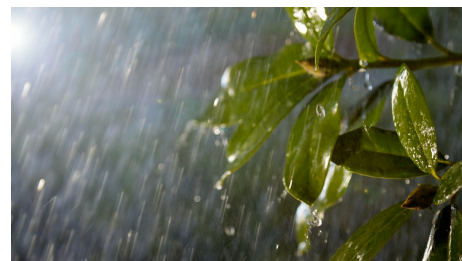
Connect your Philips Hue lights with the Bridge to control your lights from your smart phone or tablet via the Philips Hue app. Or control your Philips Hue lights with the Philips Hue dimmer indoor switch for on/off and dimming functionalities.

Easy to install and extend



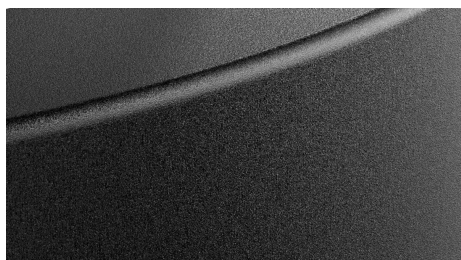
Brighten up dark paths, create highlights in your landscaping or create a unique ambience on the patio. You can do it yourself, using Hue spots or bollards. The products are based on low voltage, safe to use and easy to install. No more complexity to get lighting outdoors: start to create and extend to suit your needs.

Weather-proof (IP65)



This Philips Hue outdoor fixture is specially designed for use in outdoor environments and has undergone rigorous tests to ensure its performance. The IP level is described by two figures: the first one refers to the protection level against dust, the second against water. This lamp is designed with IP65: this means that it is protected against low-pressure jets of water. It is a higher level of protection than IP44 and commonly used when luminaires are close to the ground or require higher protection due to certain outdoor conditions.

High-quality



The products are made specifically for outdoor use. We use the highest-quality materials to ensure the best performance in outdoor conditions, as well as smart use of materials to optimise radio frequency.

Specifications

Design and finishing

- Colour: Black
- Material: Aluminium

Durability

- Nominal lifetime: 25,000

Extra feature/accessory incl.

- Adjustable spot head: Yes
- Dimmable with the Hue app and switches: Yes
- Fully weatherproof: Yes
- LED integrated: Yes

Light characteristics

- Colour rendering index (CRI): ≥ 80
- Colour temperature: 2000-6500 K

Miscellaneous

- Especially designed for: Garden, Patio
- Type: Spot Light

Product dimensions and weight

- Net weight: 0.430 kg
- Cable length: 500
- Overall height: 194 mm
- Overall length: 84 mm
- Overall width: 70 mm

Service

- Warranty: 2 year(s)

Technical specifications

- Lumen output at 4000K: 590
- Light colour: Coloured and white light (RGBW)
- Mains power: 50-60 Hz, Range 220 V–240 V
- Wattage bulb included: 8 W
- IP code: IP65 | Dust-tight and jet-proof
- Class of protection: Class III – Safe Extra Low Voltage
- Lumen output at 2700K: 350
- Number of light sources: 1

What's supported

- Compatible with Effects feature: Yes
- Philips Hue App: Android 10.0 and above, iOS 16 or later
- WiFi: Works without Wi-Fi
- Defined support period: Minimum of 48 months after introduction date
- Max. number of accessories: 12 (with Hue Bridge)
- Compatible operating systems: iOS, Android
- Communication protocol: Bluetooth, Zigbee
- Compatibility with third-party systems: Alexa, Google Home, Apple HomeKit, IFTTT, Klikaanklikuit, Matter, Samsung SmartThings, Sonos

What's in the box



Box specifications

Packaging dimensions and weight

- EAN/UPC - product: 8718696167977
- Net weight: 0.43 kg
- Gross weight: 1.23 kg
- Height: 219 mm
- Length: 156 mm
- Width: 131 mm



© 2026 Signify Holding. All rights reserved. Signify does not give any representation or warranty as to the accuracy or completeness of the information included herein and shall not be liable for any action in reliance thereon. The information presented in this document is not intended as any commercial offer and does not form part of any quotation or contract, unless otherwise agreed by Signify. Philips and the Philips Shield Emblem are registered trademarks of Koninklijke Philips N.V.