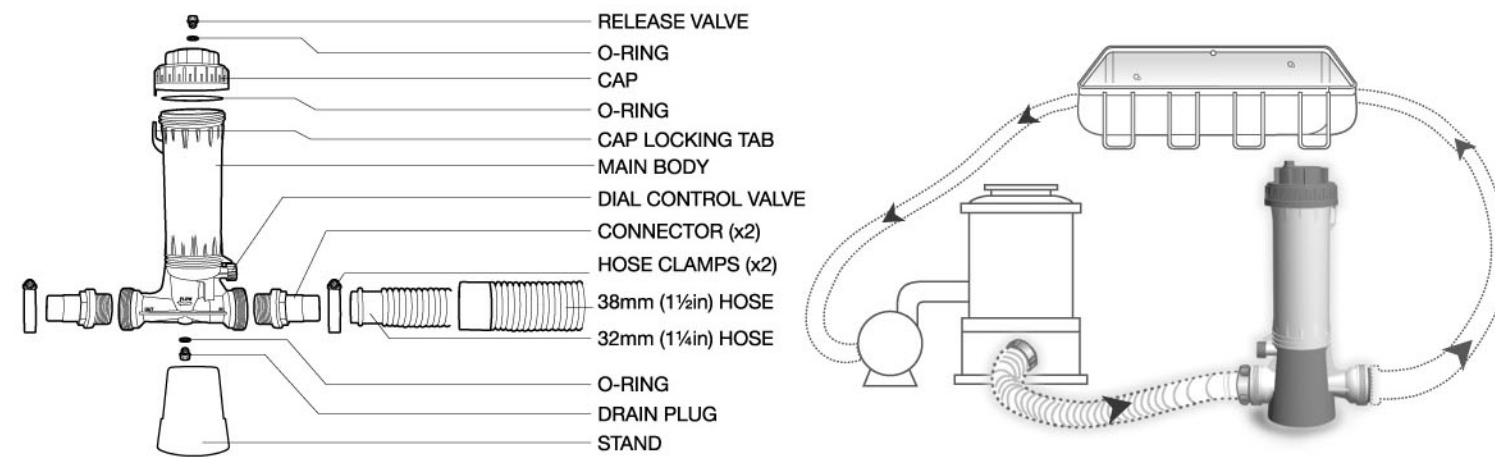


Recommended ABOVE WALL POOL WITH STANDARD 32mm(1¼in) / 38mm(1½in) HOSE CONNECTIONS



Your new Chlorine feeder is designed for installation in the return line to an above ground pool, that has a filtration system with either standard 32mm (1¼in) or standard 38mm (1½in) soft hose connection.

DANGER!

- NEVER mix chemicals
- DO NOT use any other chemicals in feeder
- Flush the feeder thoroughly with fresh water before filling with chemicals

WARNING!

- Turn off the pump and valve(s) before opening the feeder
- Avoid inhaling fumes when opening feeder
- Wear eye and skin protection when contacting feeder
- KEEP CHILDREN AWAY

It uses small or large slow dissolving Trichlor (Trichloro-s-Triazinetrione) tablets/sticks ONLY. No other types of chemicals should ever be used in your Chlorine Feeder. It holds up to 9 large (3" diameter) tablets or about 4.2 lbs of small tablets and has a dial type control valve to regulate the rate of water going through. This capacity, under normal conditions and depending on the size of your pool, should provide a minimum of one-week chlorination for very large pools and up to two weeks for smaller pools. By regulating the valve setting between + (more chlorine) and - (less chlorine) and the amount of Trichlor tablets you place into your Chlorine Feeder, you can easily adjust the chlorine feed rate that is necessary to maintain a proper chlorine residual for your pool.

IMPORTANT!

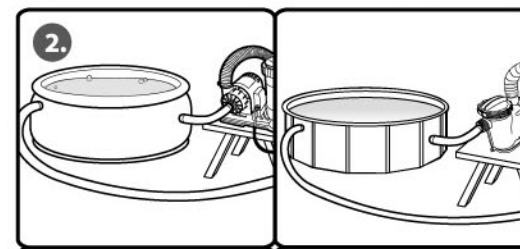
Always install your Chlorine Feeder after the heater. If there is no heater, install it after the filter. Damage to the filter or the heater may result if concentrated chlorine is allowed to flow through them.

Steps before Chlorine Feeder installation

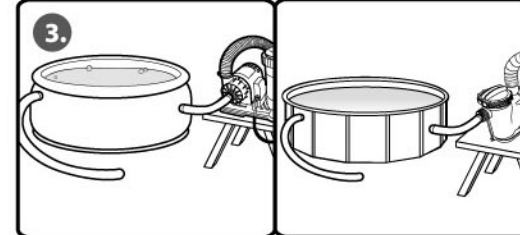
1. Screw two connectors on both side holes (marked "IN" / "OUT") of the feeder. Put Teflon® tape (not included) on the threads of each connector and screw the connectors clockwise by hand. (Fig.1)



2. If the pool is provided with plunger valve or plugs to close the pool outlet and return, close them before installation. If there are no plunger valves or plugs, place the pump on a raised surface that makes its water inlet and outlet higher than the pool water level. Lower the pool water level below pool return hole. (Fig.2) If the hose length does not allow you to place the pump with hose on a raised surface, then lower the pool water level below the pool outlet and return holes.



3. Disconnect the water return hose from the pump and empty the hose, ready for connection to feeder. (Fig.3)



Installing Chlorine Feeder to filtration system

Connect one end of a standard 32mm (1¼in) / 38mm (1½in) hose provided to the water outlet of the pump and the other end to the connector on the side marked "IN" of the Chlorine Feeder. Secure the hose connections by hose clamps provided.

NOTE: Hose length should be long enough to allow the feeder to sit level on the ground after connection to the pump. If necessary, purchase another hose in sufficient length.

Connect the water return hose to the connector on the "OUT" side of the feeder. Secure the hose connections by standard hose clamp.

After completing the installation, depending on the pool set up (refer to step above), be sure to:

- Open the plunger valves or plugs.
- Place the pump and chlorine feeder back on the ground.
- Raise the water level back to the normal level.

Directions for usage

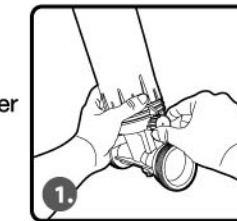
Before starting up your Chlorine Feeder, your pool should be properly conditioned and have a chlorine residual of approximately 1.0 to 1.5 ppm. Follow dealer's and chemical manufacturer's directions and instructions.

The chlorine demand for pools varies, based on use, temperature, sunlight, size and other parameters. Initially you will have to experiment to determine the proper amount of chlorine and correct the valve setting required for your pool and filter time cycle. Using a 18000 gallon (68m³) pool as a guide, placing about 6 large slow dissolving Trichlor tablets, or about 3 lbs of small slow dissolving tablets / sticks in your Chlorine Feeder would be recommended, with the DIAL CONTROL VALVE setting at ¼. Reduce or increase the DIAL CONTROL VALVE setting according to the pool size.

Check chlorine residual daily and adjust the DIAL CONTROL VALVE for more or less chlorine. Increasing the quantity of chlorine in your Chlorine Feeder will extend the time between recharging it with more chlorine.

To open your Chlorine Feeder

1. Shut OFF the pump and turn the DIAL CONTROL VALVE of your Chlorine Feeder clockwise to the end position.



2. Slowly open the RELEASE VALVE at the top of the CAP and wait one minute. **CAUTION: DO NOT INHALE THE FUMES FROM THE AIR RELEASE VALVE.**

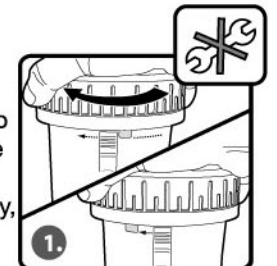


3. To open the CAP, press down the CAP LOCKING TAB (located on the body top beneath the cap) and unscrew to remove the CAP. **CAUTION: DO NOT INHALE THE FUMES FROM THE CHLORINE FEEDER!**



To close your Chlorine Feeder

1. Place the cap with the O-ring in place onto the feeder. Engage the thread and turn the cap clockwise until the tab on the cap clicks past the cap locking tab on the body, then continue to tighten by HAND only. Make sure O-ring is clean.



2. Close the RELEASE VALVE at the top of the CAP.



3. Turn the DIAL CONTROL VALVE to the desired setting. Open the in-line valves (if any) and re-start the pump.



Lubrication

Never use petroleum type lubricants on the lid's O-RING. To lubricate, use Ivory Bar Soap or Jack's No.327 lube only.

Winterizing

1. Where freezing temperatures can be expected, remove the DRAIN PLUG and drain all water from your Chlorine Feeder.
2. Carefully remove un-dissolved tablets and rinse out your Chlorine Feeder thoroughly with water.
3. Replace the CAP and engage only one and a half turns.

