

PHILIPS

Wet and dry electric shaver

Shaver series 9000

V-Track blade system PRO

8 direction ContourDetect Heads

SmartClean System Plus

SmartClick precision trimmer



S9531/26



Perfection in every pass

Cuts up to 20% more hair* in a single pass

The Shaver 9000 is our most advanced electric shaver yet. The unique contour-detect technology offers exceptional coverage over every contour of your face, and the V-Track system guides hairs into the best cutting position for the closest results.

Designed for perfection

- Our best shaving system on 1–3-day beards
- Heads flex in 8 different directions for a superb result

A comfortable shave

- Personalise your shave by choosing between three settings
- Get a comfortable dry or refreshing wet shave with Aquatec

Get the most of your shaver

- Keep your shaver like new with SmartClean
- Click-on trimmer for perfect moustache and sideburn trimming

Easy to use

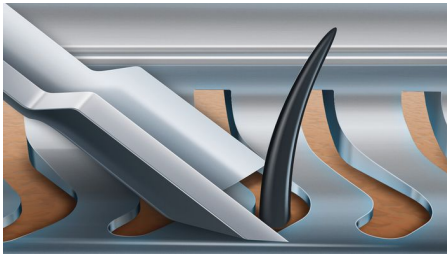
- Monitor shaver functions at a glance
- 50 minutes' cordless shaving after a one-hour charge
- Shaver can be rinsed clean under the tap
- With 2 year guarantee



asimpleswitch.com

Highlights

V-Track blade system PRO



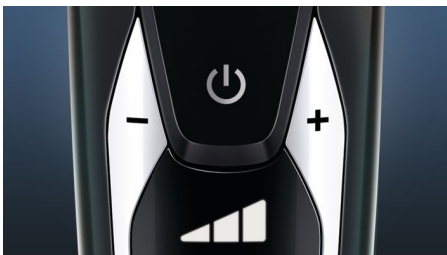
Get the perfect close shave. The V-Track Precision PRO Blades gently position each hair in the best cutting position, from 1-day to 3-day beards, including flat-lying hairs and hairs of different lengths. Cuts 30% closer* in fewer strokes, leaving your skin in great condition.

8 direction ContourDetect Heads



Follow every contour of your face and neck with 8 directional ContourDetect heads. You'll catch 20% more hairs with every pass, resulting in an extremely close, smooth shave.

Personal comfort settings



Choose between 3 modes to customise your shave: Sensitive — for a gentle yet thorough shave. Normal — for a thorough, everyday shave. Fast — for a quick shave that saves you time.

Aquatec Wet & Dry



Choose how you prefer to shave. With the Aquatec Wet & Dry seal, you can opt for a quick yet comfortable dry shave. Or you can shave wet — with gel or foam — even under the shower.

SmartClean System PLUS



At the touch of a button SmartClean PLUS cleans, lubricates, dries and charges your shaver, so it'll perform at its best every day.

5 level LED display



You can easily see how much power is left with the 5-level LED display. Your Philips close shaver will not only tell you when it's time to charge, it also has indicators for locking, cleaning and replacing the head.

50 minutes of cordless shaving



Our advanced charging system gives you two convenient options: charge for one hour and you'll get 50 minutes of running time, or do a quick charge for one full shave. All 9000 Series Shavers contain a powerful, energy-efficient, long-lasting lithium-ion battery. They are designed to operate only in cordless mode to ensure you'll always be safe when shaving with water, even in the shower.

SmartClick precision trimmer



Click on our skin-friendly Precision Trimmer to finish your look. It's ideal for maintaining your moustache and trimming your sideburns.

Fully washable shaver

Simply open the shaver head to rinse it thoroughly under the tap.



asimpleswitch.com

Philips Green Logo

Philips Green Products can reduce costs, energy consumption and CO2 emissions. How? They offer a significant environmental improvement in one or more of the Philips Green Focal Areas — Energy efficiency, Packaging, Hazardous substances, Weight, Recycling and disposal and Lifetime reliability.

Specifications

Shaving Performance

Shaving system: V-Track blade system PRO
Contour following: 8 direction ContourDetect Heads

SkinComfort: Aquatec Wet and Dry

Personal Comfort Settings: Sensitive-Normal-Fast settings

Accessories

SmartClean PLUS: Cleans, Dries, Charges, Lubricates, Cleaning cartridge (included)

SmartClick: Precision trimmer

Pouch: Travel pouch

Ease of use

Display: Five level battery indicator, Battery low indicator, Cleaning indicator, Replace shaving heads indicator, Travel lock indicator

Cleaning: Fully washable

Design

Colour: Altum

Handle: Ergonomic grip and handling

Power

Battery Type: Lithium-ion

Run time: 50 min / 17 shaves

Charging: 1 hour full charge, Quick charge for 1 shave

Automatic voltage: 100-240 V

Stand-by power: 0.1 W

Max power consumption: 9 W

Service

2 year guarantee

Replacement head: Replace every 2 yrs with SH90

Software

Software update: Philips offers relevant software updates for a period of 2 years after the date of purchase

