

Quick Installation Guide

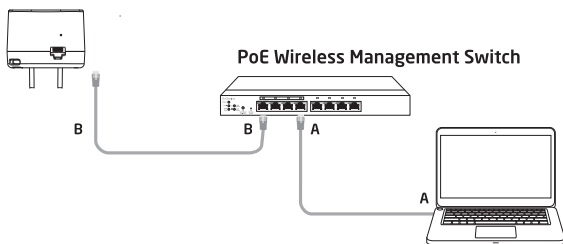
EMD1 Mesh AP
version 1.0

Wireless Managed Indoor Access Point

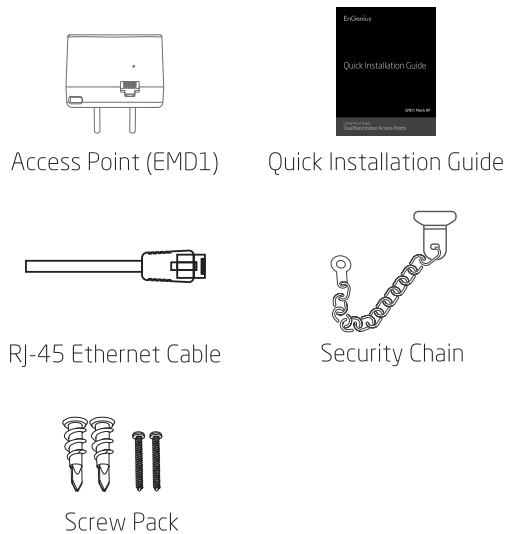
Managed Access Point Installation with Wireless Management Switch

1 Connecting the Access Point (Through EnGenius Wireless Management Switch)

- Connect one end of the **Ethernet Cable** into an **Ethernet Port** on the front panel of the EnGenius Wireless Management Switch and the other end to the Ethernet Port on the computer.
- Connect another **Ethernet Cable** into the **LAN Port** of the Managed AP and the other end to the **Ethernet Port** on the Wireless Management Switch. With the Wireless Management Switches, the Managed AP is able to obtain a proper assigned IP address for further configurations.

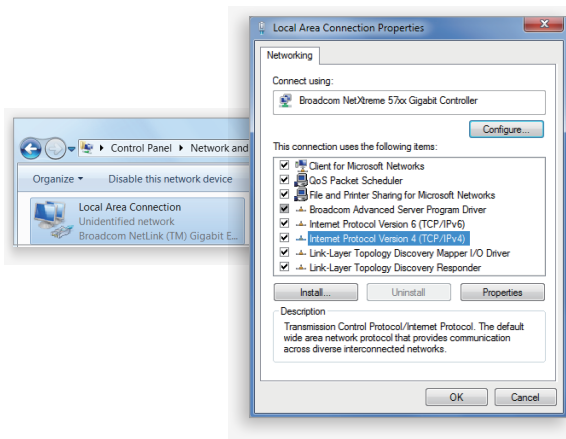


Package Contents



2 IP Address Configuration

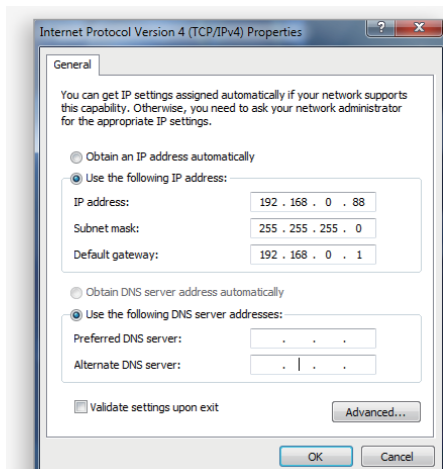
- Once your computer is on, ensure that your TCP/IP is set to **On** or **Enabled**. Open Network Connections and then click **Local Area Connection**. Select **Internet Protocol Version 4 (TCP/IPv4)**.



Minimum Requirements

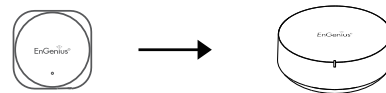
- + Broadband Internet Service (Cable or DSL Modem)
- + Internet Browser (Internet Explorer, Safari, Firefox, Chrome)
- + EnGenius Mesh Router (To use with EMR Series Routers)
- + EnGenius Wireless Management L2 Switch (To use with EWS Series Management Switches)

- If your computer is already on a network, ensure that you have set it to a Static IP Address on the interface. (Example: 192.168.0.88 and the Subnet Mask address as 255.255.255.0.)

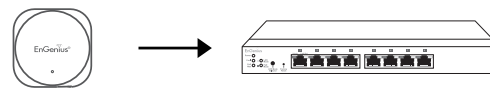


Three Types Of Installation For Different Operation

- Wireless Mesh AP Installation with EMR Series Routers



- Managed Access Point Installation with Wireless Management Switch

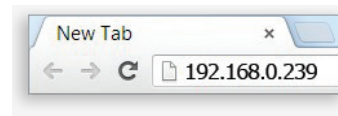


- Stand-alone Access Point Installation



3 Management Switch Setup

- Open a web browser on your computer. In the address bar of the web browser, enter **192.168.0.239** and **enter**.



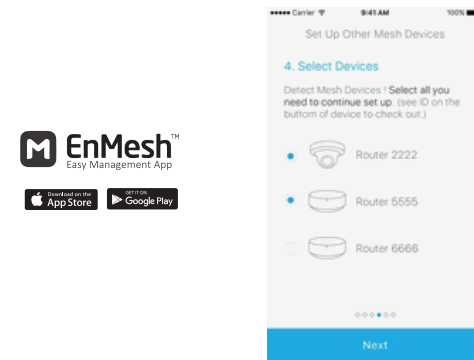
- A login screen will appear. By default, username is **admin** and the password is **password**. Enter the current username and password of the Wireless Management Switch and then click **Login**.



* Your mode number may be different in the web browser interface.

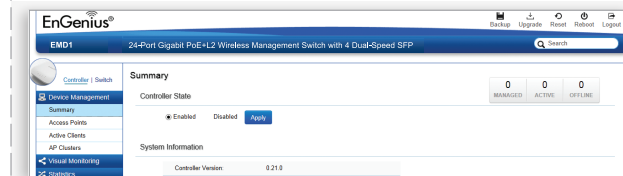
Wireless Mesh AP Installation with EMR Series Routers

- Search for "EnMesh by EnGenius" on App Store or Google Play
- Download the EnMesh APP to set up the EnGenius Mesh Router
- Add EMD1 via "Wizard" or "Device Page" in EnMesh App



Note: EMD1 will be shown "EnGenius + SN last 6 digits" in EnMesh easy setup page.

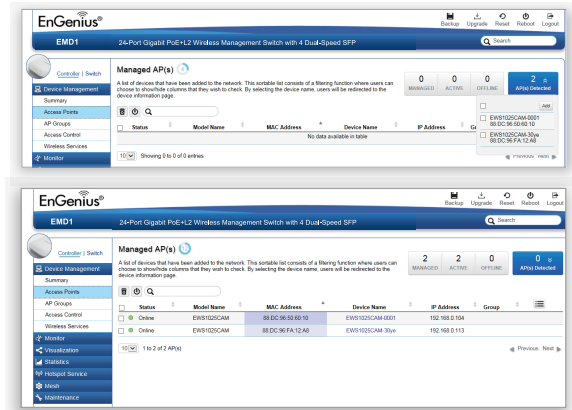
- The EnGenius Wireless Management Switch User Interface will appear. Make sure the **Controller State** is set to **Enabled**.



4 Adding Managed AP

(Through EnGenius Wireless Management Switch GUI)

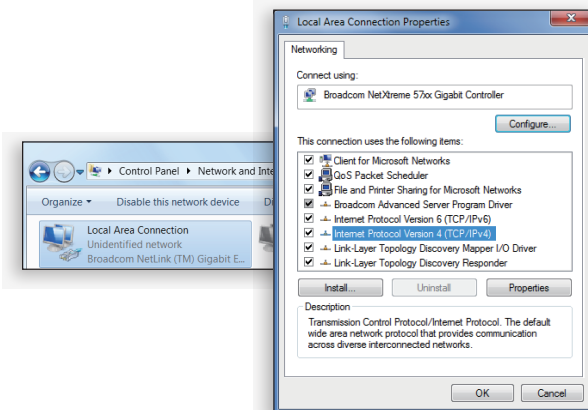
- A) All Managed AP(s) connected to the same network as the Wireless Management Switch will appear on the right side of the screen, under **Detected** list. Locate and select the Managed AP by checking the box and click **Add** to manage the device.



- B) You may configure your Managed AP(s) after you successfully connect to the Wireless Management Switch through its **GUI**.

2 IP Address Configuration

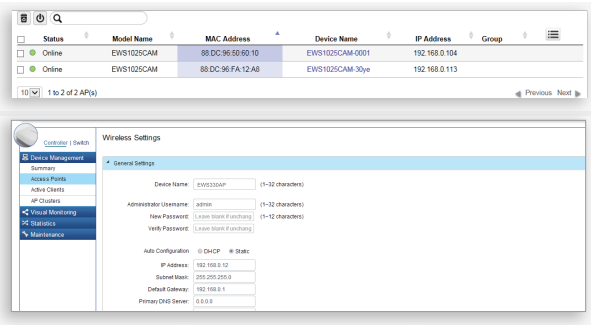
- A) Once your computer is on, ensure that your TCP/IP is set to **On** or **Enabled**. Open **Network Connectors** and then click Local Area Connection. Select **Internet Protocol Version 4 (TCP/IPv4)**.



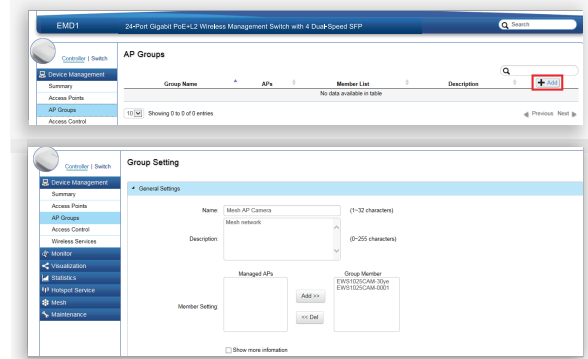
5 Configuring Managed AP

(Through EnGenius Wireless Management Switch GUI)

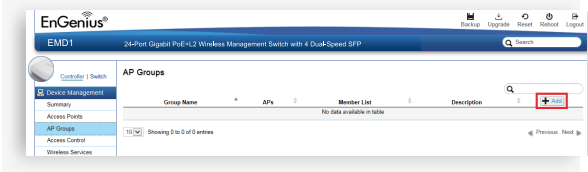
- A) Configure Managed AP(s) through the GUI interface from the switch for WLAN settings under **Device Management**. Click the "Device Name" in order to configure your Managed AP..



- B) Add Managed AP(s) to a specific **AP Group** to save repetitive configuration tasks.

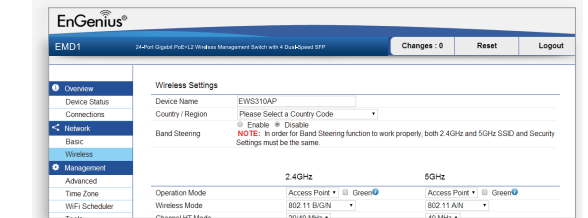


- C) Users may create several groups simultaneously to accommodate their deployments under **AP Groups**.



3 Access Point Setup

- A) Open a web browser on your computer. In the address bar of the web browser, enter **192.168.1.1** and **enter**.
- B) A login screen will appear. By default, the username of the Access Point is **admin** and the password is **admin**. Enter the current username and password of the Access Point and then click **Login**.
- C) The EnGenius Access Point User Interface will appear. This device can operate in Access Point operating mode.

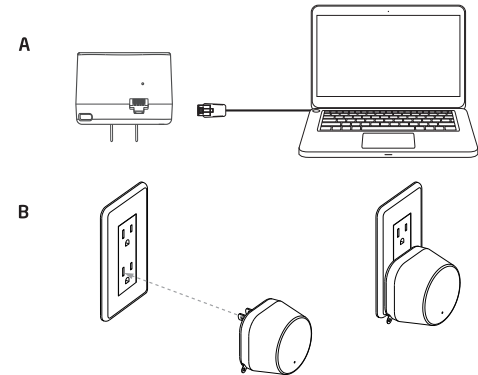


* Your model number may be different in the web browser interface.

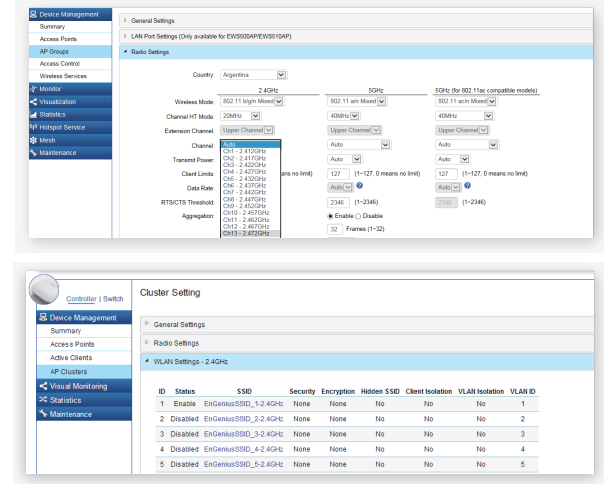
Stand-alone Access Point Installation

1 Connecting the Access Point

- A) Connect one end of the **Ethernet cable** into the **Ethernet port** of the Access Point and the other end to the **Ethernet port** on the computer.
- B) Plug in the EMD1 to an electrical outlet and wait the LED flash blue.



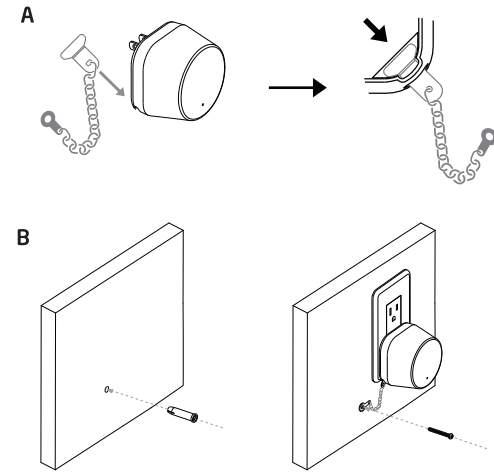
- D) For distinct settings, EnGenius Wireless Management switches still offer individual Managed Access Point customization for cluster members such as different channels that best adapt your local WLAN deployments.



- E) Upon successful connection and setup, user can review sections of the web management pages and unleash more features for WLAN deployment and performance monitoring.

Access Point Anti-Theft Protection

- A) Use security chain to through the security hole of EMD1.
- B) Use screw to through the iron hole of security chain and fasten the screw on the wall.



Technical Support

Country of Purchase	Service Center	Service Information
North America www.engeniuscanada.com	Canada	rma@engeniuscanada.com Toll Free: 888 397 2788 Local: (+1) 905 940 8181
www.engenius-tech.com	Los Angeles, USA	support@engenius-tech.com Toll Free: 885 735 7888 Local: (+1) 714 432 8668
Europe www.engeniusnetworks.eu	Netherlands	support@engeniusnetworks.eu Local: (+31) 40 8200 887
Africa / Middle East www.engenius-me.com	Dubai, UAE	support@engenius-me.com Local: (+971) 4 357 5599
Asia / Oceania www.engenius-tech.com.sg	Singapore	techsupport@engenius-tech.com.sg Local: (+65) 6227 1088
Taiwan www.engenius-tech.com.tw	Taiwan, R.O.C.	twsupport@engeniusnetworks.com Toll Free: 0800 003 885 Local: (+886) 2 2652 1808

EnGenius

Maximum data rates are based on the IEEE standards. Actual throughput and range may vary depending on many factors including environment conditions, distance between devices, radio interference in the operating environment, and mix of devices in the network. Feature and specification subject to change without notice. This device complies with Part 15 of the FCC Rules. Operation is subject to the following two conditions: (1) this device may not cause harmful interference, and (2) this device must accept any interference received, including interference that may cause undesired operation. Trademark and registered trademarks are the property of their respective owners. For United States of America: Copyright © 2018 EnGenius Technologies, Inc. All rights reserved.