

SAMSUNG

SM-R140

User Manual

Table of Contents

Basics

- 3 Read me first
- 4 About the Gear IconX
- 6 Package contents
- 7 Device layout
- 9 Preparing the earbuds for use
- 11 Battery
- 14 Turning the earbuds on and off
- 15 Indicator lights identification

Using the earbuds

- 17 Connecting the earbuds to a mobile device
- 21 Wearing the earbuds
- 22 Using the earbuds without a mobile device
- 22 Using the touchpad
- 25 Transferring music files to the earbuds
- 30 Listening to music
- 32 Using the equaliser
- 32 Setting the exercise earbud
- 33 Recording exercise information
- 38 Using call features
- 39 Using ambient sound mode

Samsung Gear and Gear IconX PC Manager

- 40 Samsung Gear
- 46 Gear IconX PC Manager

Appendix

- 48 Troubleshooting
- 51 Managing the earbuds
- 53 Turning off and restarting the earbuds
- 53 Removing the battery

Basics

Read me first

Please read this manual before using this device to ensure safe and proper use.

- Images may differ in appearance from the actual product. Content is subject to change without prior notice. You can access the full user manual for more information. Visit www.samsung.com to view device information, the user manual, and more.
- Before using other devices, make sure they are compatible with the earbuds. Visit www.samsung.com to see the specifications of compatible mobile devices.
- Prevent the device from being submerged in liquid or exposed to pressurised water jets, such as from a shower. Do not wear the device during activities, such as showering or swimming. Doing so can damage the device.
- This product includes certain free/open source software. To see the instructions for viewing the open source licence, go to the Samsung website (opensource.samsung.com).

Instructional icons



Warning: situations that could cause injury to yourself or others



Caution: situations that could cause damage to your device or other equipment



Notice: notes, usage tips, or additional information

About the Gear IconX

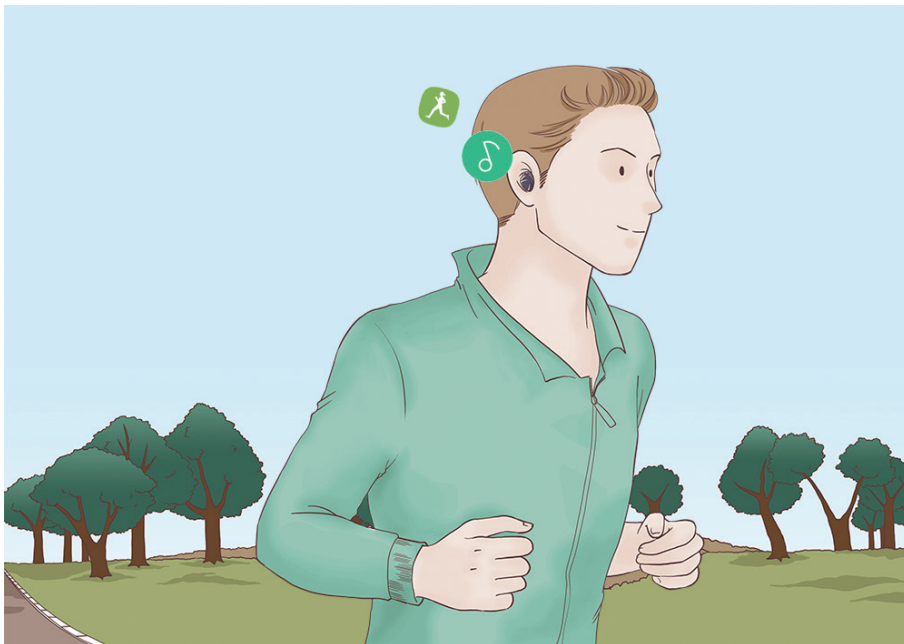
Gear IconX wireless sports earbuds allow you to track your activity levels as well as play music. You can save music files to the Gear IconX earbuds and play them directly from the earbuds, or listen to music played from your connected mobile device. The Gear IconX earbuds also record exercise information, such as the activity duration, and the number of calories you have burnt, using the built-in sensor.



Do not wear the earbuds in high-traffic areas, such as roads or crosswalks. Doing so may result in accidents due to slowed reaction times.

Using the Gear IconX earbuds alone

You can listen to music saved in your Gear IconX earbuds. The Gear IconX earbuds also record exercise information.



Using the Gear IconX earbuds with your mobile device

You can listen to music saved in your connected mobile device and answer incoming calls. You can also view your recorded exercise information via the Samsung Health app on your mobile device.



Package contents

Check the product box for the following items:

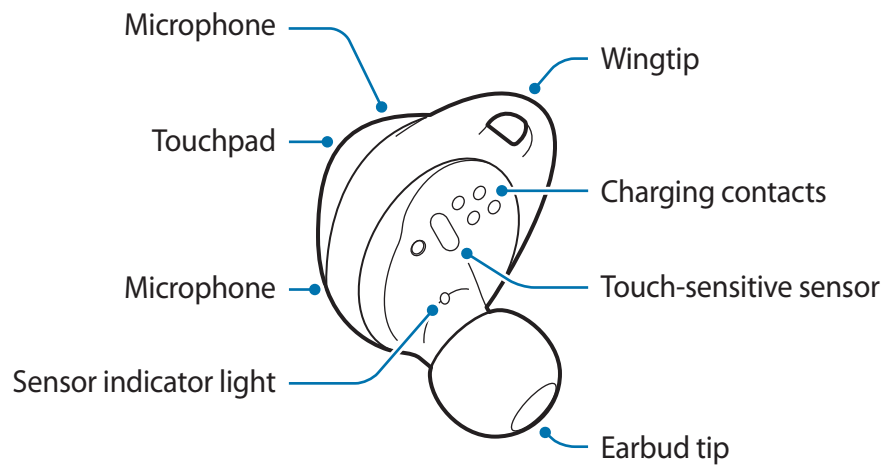
- Earbud (L/R)
- Charging case
- Wingtip (3 sets, S/M/L)
- Earbud tip (3 sets, S/M/L)
- USB cable
- USB connector (USB Type-B)
- USB connector (USB Type-C)
- Quick start guide



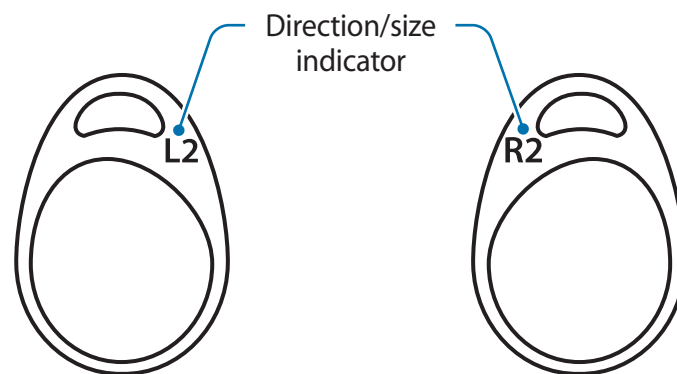
- The items supplied with the earbuds and any available accessories may vary depending on the region or service provider.
- The supplied items are designed only for this earbuds and may not be compatible with other devices.
- Appearances and specifications are subject to change without prior notice.
- You can purchase additional accessories from the Samsung website. Make sure they are compatible with the earbuds before purchase.
- Use only Samsung-approved accessories. Using unapproved accessories may cause the performance problems and malfunctions that are not covered by the warranty.
- Availability of all accessories is subject to change depending entirely on manufacturing companies. For more information about available accessories, refer to the Samsung website (www.samsung.com).

Device layout

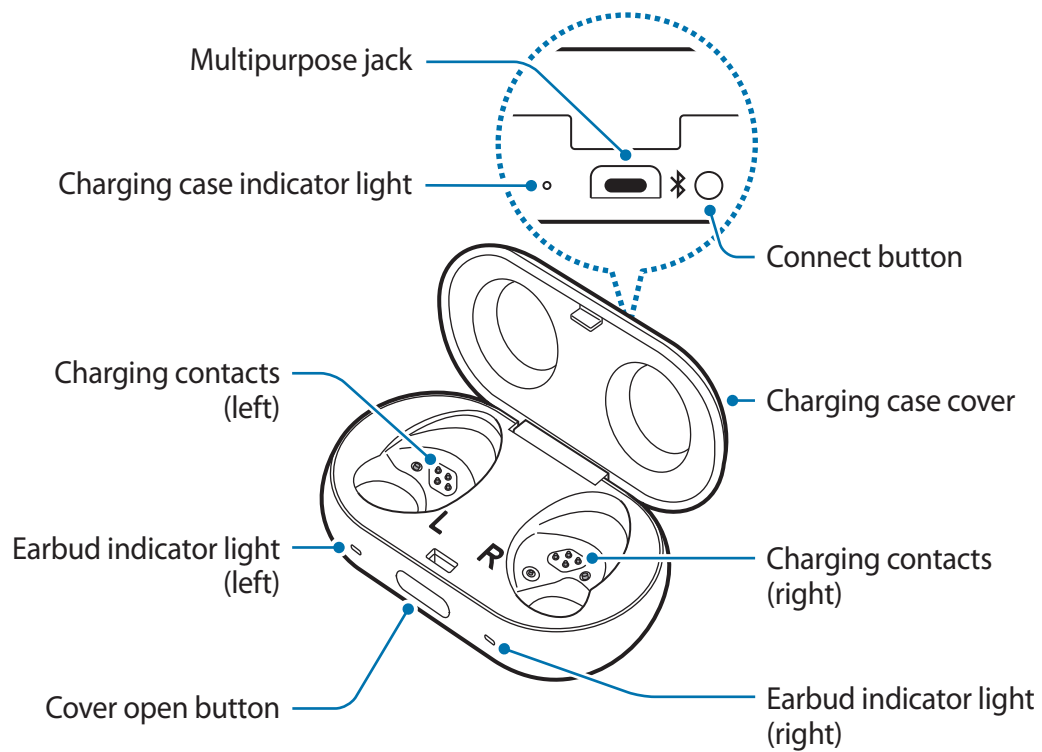
Earbud



Wingtip



Charging case

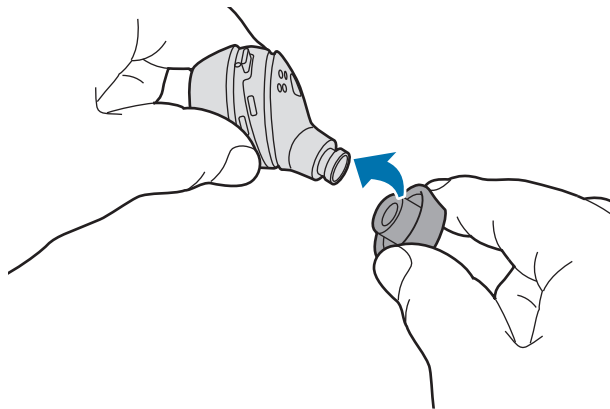


If there is sweat or liquid on the charging contacts, corrosion may occur on the earbuds. Clean the charging contacts and earbuds before storing the earbuds in the charging case.

Preparing the earbuds for use

Attaching an earbud tip to the earbud

- 1 Select the earbud tip that fits your ear.
- 2 Cover the latch at the bottom of the earbud with the earbud tip.

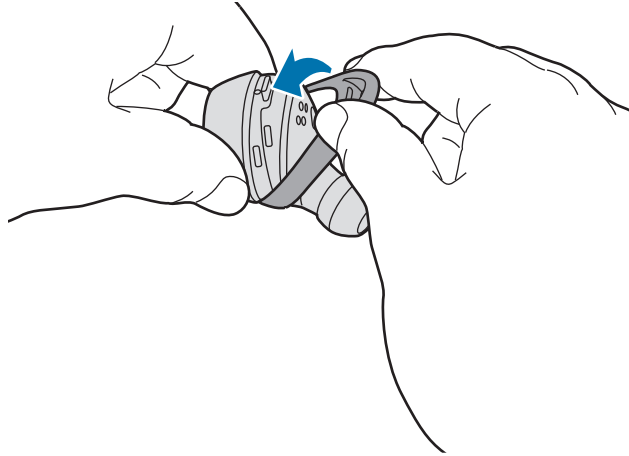


- Do not put the earbuds in your ears without earbud tips. Doing so may hurt your ears.
- Do not pull the earbud tip excessively. The earbud tip may tear.

- 3 Follow the same procedure for the opposite earbud.

Attaching a wingtip to the earbud

- 1 Select the wingtip that fits your ear.
- 2 Select the wingtip for the left or right ear.
- 3 Cover the earbud with the wingtip.



- Do not put the earbuds in your ears without wingtips. Doing so may hurt your ears.
- Do not pull the wingtip excessively. The wingtip may tear.



Do not put the wingtips on the earbuds in the wrong direction. The earbuds will not fit in your ears properly. Also, the earbuds will not charge if they cannot be properly inserted into the case.

- 4 Follow the same procedure for the opposite earbud.

Battery

Charging the battery

Fully charge the battery before using the earbuds for the first time or when they have been unused for extended periods. The earbuds will power on while charging. When the battery is completely discharged, it needs at least 10 minutes to turn on.

Check the direction on each earbud, insert them into the corresponding slots, and then connect the charging cable.

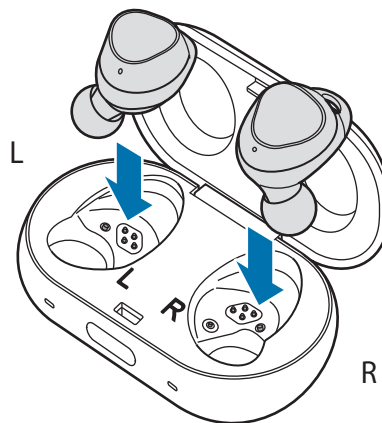
The charging case, which has a built-in battery, is charged along with the earbuds.

You can charge the earbuds by placing them into the charging case without connecting it to an electric socket.

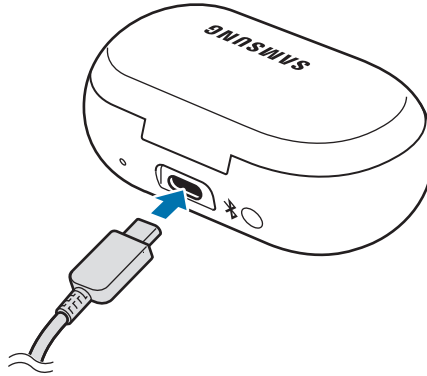



- Chargers are sold separately.
- You cannot use your earbuds' wireless features while charging the battery.
- When there is sweat or liquid on the charging terminal or earbuds, clean them before charging the battery.

- 1 Push the cover open button to open the charging case cover.
- 2 Check the direction of each earbud and insert them into their corresponding slots.



- 3 Close the charging case.
- 4 Connect the USB cable to the USB power adaptor, and then plug the USB cable into the multipurpose jack of the charging case.



 Connecting the charger improperly may cause serious damage to the charging case. Any damage caused by misuse is not covered by the warranty.

- 5 Plug the USB power adaptor into an electric socket.
The batteries of the earbuds and the charging case are charged simultaneously.

- 6 After fully charging, disconnect the charging case from the charger. First unplug the charger from the charging case, and then unplug it from the electric socket.



- If the earbuds indicator lights flash red, take them out and insert them again or connect the charging cable.
- If you do not use the earbuds for an extended period, turn off the earbuds. Refer to [Turning off and restarting the earbuds](#) for more information.
- To save energy, unplug the charger when not in use. The charger does not have a power switch, so you must unplug the charger from the electric socket when not in use to avoid wasting power. The charger should remain close to the electric socket and be easily accessible while charging.

Reducing the battery consumption

Your earbuds provide two options that help you conserve battery power.

- When you are not using the earbuds, store them in the charging case. The touch-sensitive sensor will continue to work while wearing the earbuds and reduce the usage time.
- After connecting the earbuds to your mobile device, launch the **Samsung Gear** app and tap **SETTINGS** → **Notifications**, and then tap the switch to deactivate it. You can reduce the battery consumption by disabling voice notifications.

Battery charging tips and precautions

- If there is sweat or liquid on the charging contacts, corrosion may occur on the contacts. When there is sweat or liquid on the charging terminal or earbuds, clean them before charging the battery.
- Using a power source other than the charger, such as a computer, may result in a slower charging speed due to a lower electric current.
- While charging, the earbuds and the charging case may heat up. This is normal and should not affect the earbuds' lifespan or performance. If the battery gets hotter than usual, the charger may stop charging.
- If the earbuds and charging case are not charging properly, take them with the charger to a Samsung Service Centre.
- Avoid bending the charger. Doing so may damage or reduce the lifespan of the charger. Never use a damaged charger.
- For more information about the battery, such as the usage time, refer to the Samsung website (www.samsung.com).

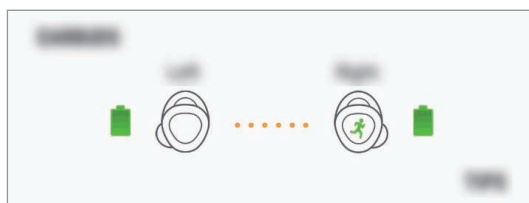
Checking the battery level

Checking via voice guide

When the battery level drops below 10 %, 5 %, 2 %, a voice guide will inform you of the battery level. Save your exercise information to your mobile device in advance while you are working out before the battery discharges completely.

Viewing the battery level from the connected mobile device

Connect the earbuds to your mobile device, launch the **Samsung Gear**, and view the battery status of each earbud on the **INFO** → **EARBUDS** card. Refer to [Connecting the earbuds to a mobile device](#) for more information.



When the remaining battery level is low, a notification will appear on the mobile device's notification panel.

Turning the earbuds on and off

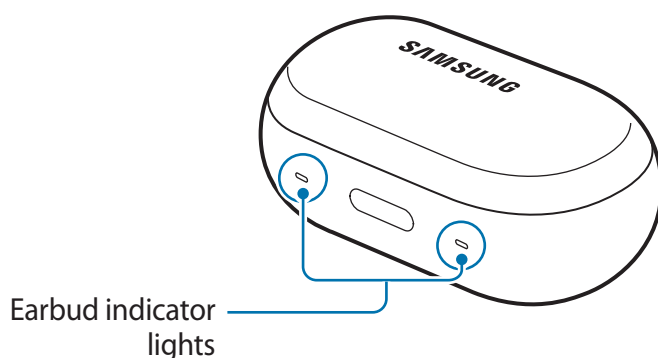
Insert the earbuds into the charging case and close it. When you open the case, the power will turn on and the sensor indicator light will flash.

Indicator lights identification

The indicator lights inform you of your earbuds and the charging case's charging status.

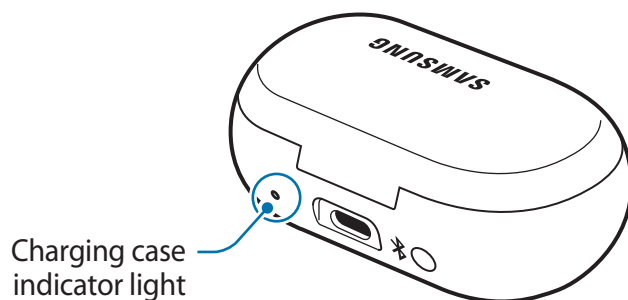
Two earbud indicator lights are located on the left and right side of the charging case's open button and show the charging status of each earbud, respectively. The charging case indicator light next to the multipurpose jack indicates the charging status of the case itself.

Earbud indicator lights



| Colour | Status |
|---------------------------|---|
| Continuously on red | <ul style="list-style-type: none">• Charging |
| Continuously on green | <ul style="list-style-type: none">• Fully charged |
| Flashes red (rapid pace) | <ul style="list-style-type: none">• Charging disabled due to abnormal temperatures |
| Flashes red (medium pace) | <ul style="list-style-type: none">• Charging disabled due to an error in connecting to the charging contacts• Charging disabled due to low charging case battery |

Charging case indicator light



| Colour | Status |
|--|---|
| Continuously on red | • Charging |
| Continuously on green | • Fully charged |
| Flashes red (rapid pace) | • Charging blocked due to abnormal temperatures |
| Flashes red (slow pace) | • Low battery |
| Green → Red → Blue | • Waiting for the mobile device to connect |
| Red (5 seconds after inserting the earbuds) | • Battery power is low (lower than 30 %) |
| Yellow (5 seconds after inserting the earbuds) | • Battery power is moderate (between 30 % and 60 %) |
| Green (5 seconds after inserting the earbuds) | • Battery power is high (more than 60 %) |
| Flashes blue | • Updating software |



- The indicator lights flash red when the external power is cut off during charging.
- If the indicator lights do not work as described, disconnect the charger from the charging case and reconnect it.

Using the earbuds

Connecting the earbuds to a mobile device

Connecting the earbuds to a Samsung mobile device

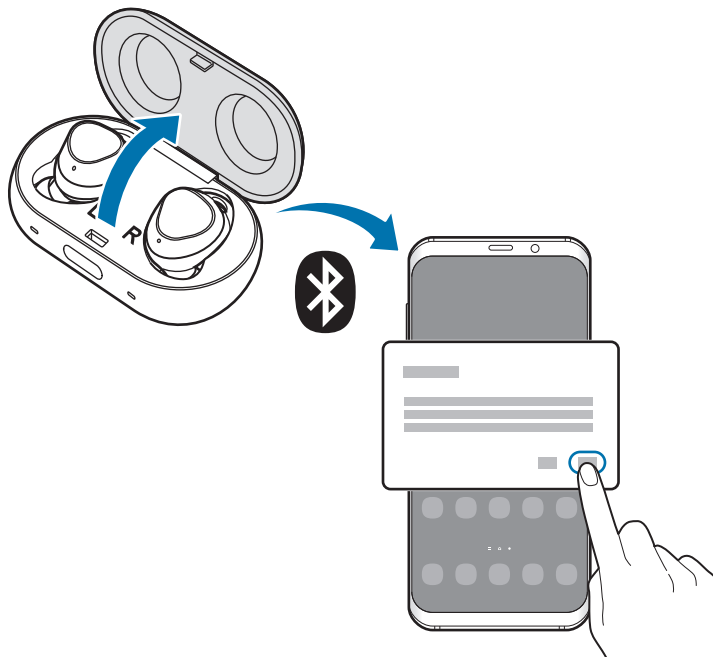
- 1 Check the direction of each earbud, correctly insert them into their corresponding slots in the charging case, and close it.

If the earbud indicator lights do not flash, connect the charging cable and charge them for more than 10 minutes.

- 2 Open the charging case.

The earbuds will enter Bluetooth pairing mode and a pop-up window will automatically appear on your mobile device.

If the pop-up window does not appear or if you want to connect with another Android device, refer to [Connecting the earbuds to a non-Samsung mobile device \(or, the connection pop-up window does not appear\)](#).





- When the charging case's indicator light flashes in red, take out the earbuds from the charging case and insert them into the case again.
- If the earbuds do not connect to a mobile device within three minutes, Bluetooth pairing mode will be deactivated. If the earbuds have never been connected to a mobile device before, close the charging case again and open it.

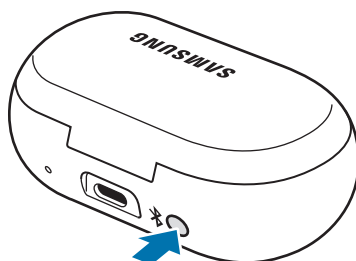
3 When the pop-up window appears on your mobile device, tap **OK**.

4 Follow the on-screen instructions to complete the connection.

Once the earbuds are connected to your mobile device, they will automatically attempt to connect to your mobile device whenever you take them out of the charging case.



If you want to connect to another mobile device after connecting has been established, you have to reinsert the earbuds into the charging case and close it. Press and hold the charging case's Connect button.



Connecting the earbuds to a non-Samsung mobile device (or, the connection pop-up window does not appear)

1 On your mobile device, launch **Play Store** and download the **Samsung Gear** app.



- You can download the Samsung Gear app only on mobile devices running Android operating system 4.4 (API 19) or later, and with 1.5 GB of RAM or more.
- You can change the language of the Samsung Gear app on your connected mobile device. On your mobile device, launch **Settings** → **General management** → **Language and input** → **Language**. English may appear by default if the selected language on the Settings screen is not supported on the Samsung Gear app.

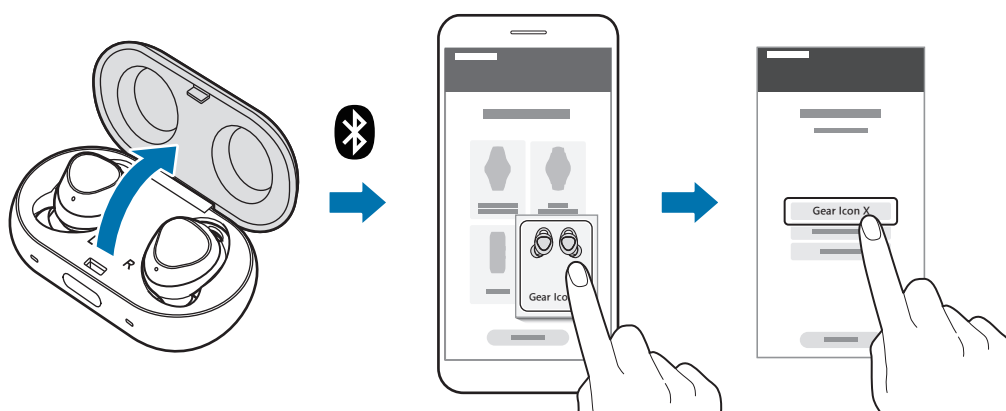
- 2 Check the direction of each earbud, correctly insert them into their corresponding slots in the charging case, and close it.

If the earbud indicator lights do not flash, connect the charging cable and charge them for more than 10 minutes.

- 3 Open the charging case.

The earbuds will enter Bluetooth pairing mode.

- 4 On your mobile device, launch the **Samsung Gear** app and follow the on-screen instructions to complete the connection.



Tips and precautions when connecting to the mobile device

- If the earbuds do not connect to a mobile device within three minutes, Bluetooth pairing mode will be deactivated. Close the charging case again and open it if they have not been connected for the first time. The earbuds will enter Bluetooth pairing mode.
- If you want to connect to another mobile device after connecting has been established, you have to reinsert the earbuds into the charging case and close it. Press and hold the charging case's Connect button. Earbuds will enter Bluetooth pairing mode and the charging case's indicator light will flash in green, red, and blue in turn.
- If the Bluetooth connection fails or the mobile device cannot scan the earbuds, unpair devices that were previously paired with your mobile device. Then, try to connect again.
- Connection methods may vary depending on your device and software version.
- You can download the Samsung Gear app only on mobile devices running Android operating system 4.4 (API 19) or later, and with 1.5 GB of RAM or more.

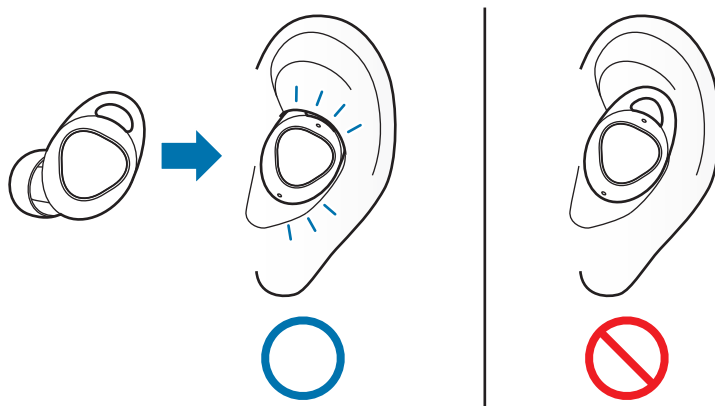
Notices for using Bluetooth

Bluetooth is a wireless technology standard that uses a 2.4 GHz frequency to connect to various devices over short distances. It can connect and exchange data with other Bluetooth enabled devices, such as mobile devices, without connecting via cables.

- To avoid problems when connecting your earbuds to another device, place the devices close to each other.
- Ensure that your earbuds and the other Bluetooth device are within the Bluetooth connection range (10 m). The distance may vary depending on the environment the devices are used in.
- Ensure that there are no obstacles between the earbuds and a connected device, including human bodies, walls, corners, or fences.
- Do not touch the Bluetooth antenna of a connected device.
- Bluetooth uses the same frequency as some industrial, scientific, medical, and low power products and interference may occur when making connections near these types of products.
- Some devices, especially those that are not tested or approved by the Bluetooth SIG, may be incompatible with the earbuds.
- Do not use the Bluetooth feature for illegal purposes (for example, pirating copies of files or illegally tapping communications for commercial purposes).

Wearing the earbuds

Insert the wingtips into your ears and adjust accordingly to fit your ears.



1 Check the direction of each earbud and put them in your ears with the wingtip facing upwards until they sit conformably in your ears.

2 Adjust the earbuds by rotating them to the left or right to fit your ears.

The touch-sensitive sensor will automatically detect that you are wearing the earbuds when you put them on. Then, the earbud will emit a sound.



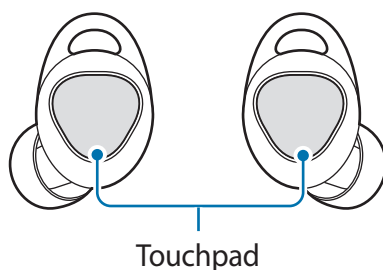
- If the touch-sensitive sensor does not make contact with your ear, the earbud may not work. Use the wingtips and earbud tips that fit your ears.
- Follow all posted warnings and directions from authorised personnel in areas, such as aeroplanes and hospitals.

Using the earbuds without a mobile device

You can use the earbuds without connecting them to a mobile device. Some features like receiving call are not available. If you want to save your exercise information, connect the earbuds with your mobile device after finishing workout. Only records from the previous 30 days are saved in the earbuds. Refer to [Connecting the earbuds to a mobile device](#) for more information.

Using the touchpad

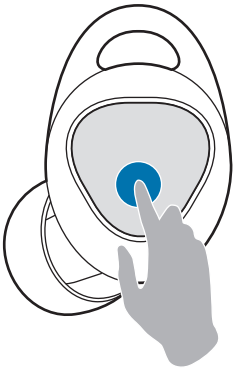
You can control music playback and answer or reject calls with the touchpad.



- To avoid hurting your ears, do not apply excessive pressure to the touchpad with your fingertips.
- To avoid damaging the touchpad, do not tap it with anything sharp.



The direction in which you wear the earbuds will affect the direction of your drag on the touchpad. Wear the earbuds correctly. Refer to [Wearing the earbuds](#) for more information.



Single tap

- Play or pause track.



Double tap

- Play next track.
- Answer or end a call.
- Place the current call on hold and answer the second call.
- Switch between the current call and the held call.



Triple tap

- Play previous track.
 - If you triple-tap three seconds after a track begins playing, it will start the track from beginning. Triple-tap the touchpad within three seconds of when a track begins playing to play the previous track.



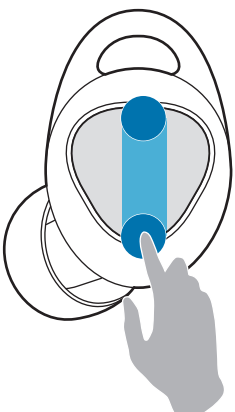
Tap and hold

- Decline call.
- The microphone on or off during a call.
 - This will not display anything on the mobile device.
- Retrieve a held call after ending a current call.
- Read out menu options.



Double tap and hold

- Go to the next playlist if you're wearing both earbuds
 - Music saved in the earbuds is only available. Refer to [Making playlists](#) for more information.




Swipe up/down

- Volume up/down.

Reading the menu options

- 1 Tap and hold the touchpad to read the menu options.
- 2 Release your finger to activate the feature when you hear the menu option you want to use.
 - **Voice command:** Use voice command on your mobile device.
 - **Start/finish workout:** Record your exercise information.
 - **Workout details:** Check the status of your workout.
 - **Ambient sound:** Set to hear your surroundings. Refer to [Using ambient sound mode](#) for more information.
 - **Lock touchpad:** Prevent unintended actions. Refer to [Touchpad](#) for more information.



- If you fail to activate the feature, tap and hold the touchpad again to read the menu options again.
- To reorder the read out menu options, tap **SETTINGS** → **Read out menu options**. Then, drag  next to the options you want to reorder and move it to the place you want.
- The order and features listed in the menu options appear differently depending on your settings.

Using the touchpad lock feature

You can prevent unintended actions by using the touchpad lock feature.

- 1 Launch the **Samsung Gear** app on the mobile device.
- 2 Tap **SETTINGS** → **Touchpad**.
- 3 Tap the **Lock touchpad** switch to activate it.



To deactivate touchpad lock feature, take off both earbuds or tap and hold a touchpad.

Using the touchpad auto lock feature

You can set your touchpad to activate the lock feature automatically.

- 1 Launch the **Samsung Gear** app on the mobile device.
- 2 Tap **SETTINGS** → **Touchpad**.
- 3 Tap **Lock automatically** and select an option.
 - **Never:** Set the touchpad to never automatically activate the lock feature.
 - **After 30 seconds without input:** Set the touchpad to activate the lock feature automatically if there is no input after 30 seconds.
 - **During workouts:** Set the touchpad to activate lock feature automatically during workouts.

Transferring music files to the earbuds

Transferring music files from your mobile device

Transfer music files from your mobile device to your earbuds via the Samsung Gear app on your mobile device.



- Transferring music may not be available depending on the mobile device.
- Music files which are not transferred via the Samsung Gear app may not be played.
- The earbuds support the MP3, M4A, AAC, WAV, WMA (WMA v9) file formats.
- Music files in the playlist are sorted alphabetically.
- The earbuds will play only the first to the 1,000th file in the playlist.
- The same music files may not be saved in both earbuds when you transfer the music files manually without using the Samsung Gear app. If the music files in each earbud are different, they may not play.

Transferring music files using a USB connector

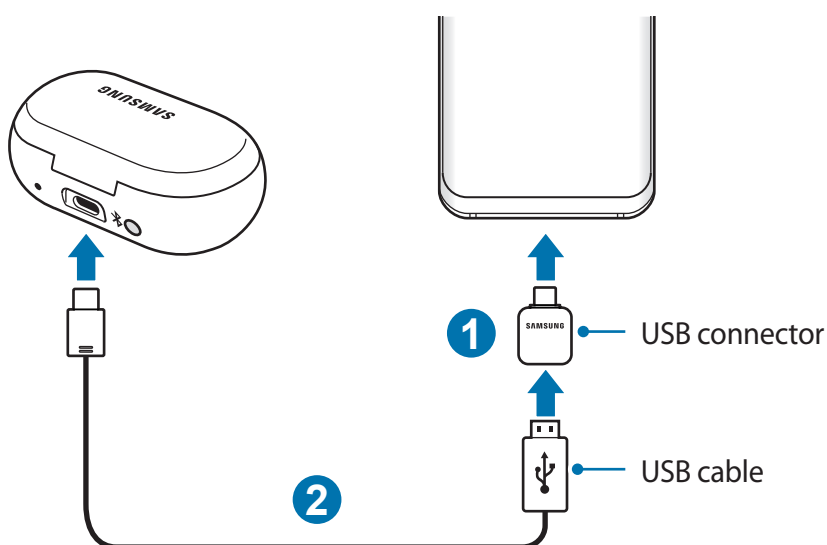
Transfer music files saved in your mobile device to your earbuds using a USB connector.

- 1 Check the direction of each earbud, correctly insert them into their corresponding slots in the charging case, and close it.



If one of the earbuds does not touch the case's charging contact, your mobile device will not recognise the earbuds.

- 2 Plug the USB connector into the multipurpose jack of your mobile device. Connect the charging case and the mobile device via the USB cable.



- You must plug the USB connector into your mobile device. If you plug the USB connector into the charging case, you cannot transfer your music files to the earbuds. If your mobile device does not support the USB connector, you cannot transfer music files to the earbuds.
- Transferring data with the USB connector increases the battery power consumption. Ensure that the battery is fully charged before transferring data. If the battery power is low, data transfer may be interrupted.
- If the USB connector provided with the earbuds is not compatible with your mobile device, use a USB connector compatible with your mobile device.

- 3 Launch the **Samsung Gear** app on the mobile device.

4 Tap **SETTINGS** → **Music** → **Transfer tracks to Gear** or tap **INFO** → **TRANSFER MUSIC** on the **MUSIC ON GEAR ICONX** card, and tap **USB connector**.

5 Tap **ADD**, tick music files to transfer, and then tap **DONE**.

Music files are saved in the earbuds. Do not change the folder name or create a new folder. If you make any changes to the file directory of the earbuds, the music files may not play.



Do not disconnect the USB cable or USB connector from the earbuds or mobile device when you are transferring files. Doing so may cause data loss or device damage.

Transferring music files wirelessly via Bluetooth

Transfer music files saved in your mobile device to your earbuds via Bluetooth. You can send multiple music files at once and you can also delete music files.

1 Launch the **Samsung Gear** app on the mobile device.

2 Tap **SETTINGS** → **Music** → **Transfer tracks to Gear** or tap **INFO** → **TRANSFER MUSIC** on the **MUSIC ON GEAR ICONX** card, and tap **Wireless transfer**.

3 Tap **SELECT TRACKS** → tick music files to transfer, and then tap **DONE**.

Music files are saved in the earbuds. Do not change the folder name or create a new folder. If you make any changes to the file directory of the earbuds, the music files may not play.

Transferring music files from your computer

Transfer music files from your computer to your earbuds via the Gear IconX PC Manager on your computer. Transfer music files from your computer to the earbuds using the earbuds as a removable disk for data transfer.



- Music files which are not transferred via the Gear IconX PC Manager may not play.
- The same music files may not be saved in both earbuds when you transfer the music files manually without using the Gear IconX PC Manager. If the music files in each earbud are different, they may not play.

Connecting the earbuds with the computer

To connect the earbuds to your computer, you must install Gear IconX PC Manager on your computer. Refer to [Installing Gear IconX PC Manager](#) for more information.

Transferring music files from your computer

- 1 Check the direction of each earbud, correctly insert them into their corresponding slots in the charging case, and close it.



If any one of the earbuds does not make contacts with the charging contacts, the Gear IconX PC Manager will not recognise the earbuds.

- 2 Connect the charging case to the computer via the USB cable.

3 In the computer, run **Gear IconX** and click **Add new tracks**.



When the software update pop-up window appears, tap **Update** to update it to the latest version if necessary. If the pop-up window does not appear, tap **More** → **About PC software** → **Update** to view the Gear IconX PC Manager's version information, and update it.

4 Select music files to transfer and click **Open**.

Music files are saved in the earbuds. Do not change the folder name or create a new folder. If you make any changes to the file directory of the earbuds, the music files may not play.



Do not disconnect the USB cable from the earbuds or computer when you are transferring files. Doing so may cause data loss or device damage.

Syncing between earbuds

Sync the earbuds so that they have the same music files when you manually transfer music files without using the Samsung Gear app or the Gear IconX PC Manager.

1 Check the direction of each earbud, correctly insert them into their corresponding slots in the charging case, and close it.



If one of the earbuds does not touch with the charging case's contact, Gear IconX PC Manager will not recognise the earbuds.

2 Connect the charging case and the computer via the USB cable.

3 On your computer's desktop, click **Gear IconX** → **More** → **Sync earbuds**.

The music files are automatically stored in both earbuds.

Listening to music

Making playlists

You can make playlists with the music files saved in your earbuds.

- 1 Launch the **Samsung Gear** app on the mobile device and tap the music file on the **INFO** → **MUSIC ON GEAR ICONX**.

The playlist screen will appear.

- 2 Tap and hold the file you want to add to the playlist.

- 3 Tick other files you want to add.

- 4 Tap **ADD** and select the playlist you want.

Playing music files saved in the earbuds

Listen to music saved in your earbuds without connecting them to your mobile device.

Tap the touchpad to play music.



If you play a video or a game while wearing the earbuds, the sound may be delayed depending on the mobile device's model, software, and the running apps. The sound delay may occur when you sync your mobile device with your earbuds.

Playing or pausing the track

Tap the touchpad to play and pause the track.

Playing the next track

Double-tap the touchpad to play the next track during playback.

Playing the previous track

Tap the touchpad three times to play the previous track during playback.



If you triple-tap three seconds after a track begins playing, it will start the track from beginning. Triple-tap the touchpad within three seconds of when a track begins playing to play the previous track.

Playing the next playlist

Double tap and hold the touchpad to play the next playlist.

Adjusting the volume

Drag your finger upwards or downwards on the touchpad to adjust the volume during playback.



If using the earbuds without connecting to a mobile device, the earbuds will emit a sound when the volume is above a certain level. Reduce the volume, even if you can turn up the volume more, to prevent the hearing damage.

Playing music files saved in your mobile device

Listen to music saved in your mobile device by connecting the earbuds to the mobile device. You can stream music played from the connected mobile device without saving music files on the earbuds.

- 1 Launch the **Samsung Gear** app on the mobile device.
- 2 Tap **SETTINGS** → **Music** → **Play music from** or tap **INFO** → **PLAY MUSIC FROM**.
- 3 Tap **Phone** to play music from your mobile device.
- 4 Launch a music player app and play music.

You can control the playback in the same way as when playing music saved in the earbuds.



- Adjust the volume via your connected device if a sound is low in your earbuds while at full volume.
- If you connect the earbuds to your mobile device while listening to music, the volume may change.

Using the equaliser

You can select from five different equaliser modes.

- 1 Launch the **Samsung Gear** app on the mobile device.
- 2 Tap **INFO** → **VOLUME AND SOUND** → **EQUALISER**.
- 3 Select which of the five modes you want to use.



When used with other sound quality modes and effects of your mobile device, the effect may be duplicated or distortion may occur.

Setting the exercise earbud

Set the exercise earbud to record exercise information. The right earbud records exercise information by default.

- 1 Launch the **Samsung Gear** app on the connected mobile device.
- 2 Tap **SETTINGS** → **Exercise** → **Exercise earbud** and select the right or left earbud.



After you change the exercise earbud, the earbuds may not automatically reconnect to your mobile device. If this happens, on your mobile device, tap **Settings** → **Connections** → **Bluetooth**, and then search for the earbuds and connect the device manually.

Recording exercise information

Starting a workout

Record and save exercise information, such as the activity duration, and the number of calories you burnt, without connecting the earbuds to your mobile device.

- 1 Put both earbuds in your ears. You will hear a sound informing that you are wearing the earbuds.
- 2 Tap and hold the touchpad and release it when you hear a voice telling to you to start your workout.
- 3 When you hear the audio guidance followed by four beeps, start your workout.
Audio coaching is provided according to your exercise target after the exercise starts.
 - To check the status of your workout, tap and hold the touchpad and release it when you hear "Workout details." Then, you will hear the recorded exercise information. On your mobile device, launch the **Samsung Gear** app and tap **SETTINGS** → **Exercise** → **Guide intervals**.
 - To hear your surroundings during your workout, tap and hold the touchpad and release it when you hear "Turn on ambient sound." Then, you will hear "Ambient sound turned on."
 - If the touch-sensitive sensor does not make contact with your ear, the earbuds may stop working. Remove the earbuds from your ears and put them in your ears again within 20 minutes. When you hear "Workout resumed," continue your workout.

- 4 When you have finished your workout, tap and hold the touchpad and release it when you hear “Finish workout.”

You will hear your workout results. You can also view the type of workout and the workout duration via your connected mobile device’s Samsung Gear app or the Samsung Health app.



- If you workout while not wearing the earbuds correctly, the earbuds might fall out from your ears. Select the wingtips and earbud tips that fit your ears, and check to make sure your earbuds are correctly fitted in your ears before you workout.
- The feature can be used after you connect your earbuds to the Samsung Gear app for the first time.
- You can listen to the audio guide of your workout details after you finished your workout. On your mobile device, launch the **Samsung Gear** app and tap **SETTINGS** → **Exercise** → **Guide intervals**.

Automatic exercise recognition

Once you have engaged in an activity for more than 10 minutes while wearing the earbuds, they automatically recognise that you are exercising and record exercise information.

When you stop exercising for more than one minute, the earbuds automatically recognise that you have stopped exercising and this feature is deactivated.



- Among the various exercise types, only walking and running can be measured.
- The measurements of the automatic exercise recognition feature may not be accurate depending on your walking and exercise routines.
- If you connect your Gear which has an automatic exercise recognition feature to a mobile device, the automatic exercise recognition feature of the earbuds may not work.

Starting a workout with the earbuds connected to your mobile device

When you work out with the earbuds connected to your mobile device's exercise apps, you can check the details and history of your exercise information on the Samsung Health app of the connected mobile device.



If you already started a workout from the earbuds, you cannot control your workout session via the mobile device's Samsung Health app. End the current session by tapping and holding the touchpad and releasing it when you hear "Finish workout."

1 Connect the earbuds to your mobile device. Refer to [Connecting the earbuds to a mobile device](#) for more information.

2 Launch **Samsung Health** app on the mobile device.

The Gear IconX is automatically added to the Samsung Health app's accessories list.

3 In the Samsung Health app, tap **START** on the activity tracker.

4 Tap **START** on the exercise screen.

The 3-second countdown timer will start. Start your workout when the timer reaches 0.

- If the distance between the earbuds and the mobile device is more than 10 m, the earbuds and the mobile device will disconnect automatically with a beep. To resume your workout, bring the devices within 10 m of each other. When you hear a beep, and then "Workout resumed," stay still until the voice guide is complete and then continue your workout.

5 When you have finished your workout, tap **PAUSE** → **STOP** on the activity tracker.

The earbuds will stop recording exercise information and the workout result will be displayed.



- The profile and the distance unit set in the Samsung Health app will be used for the earbuds and Samsung Gear app. If Samsung Health is not up to date, it may not connect to the earbuds. Check Samsung Health's version information and update to the latest version.
- Only records from the previous 30 days are saved in the earbuds. Connect the earbuds to your mobile device within 30 days after you finished your workout and save the records to the Samsung Health app.

Using the coach

You can receive audio coaching while walking or running. You can also change the coach or create your own coach.

1 Launch the **Samsung Gear** app on the mobile device.

2 Tap **SETTINGS** → **Exercise** → **Pace-setter**.

3 Tap < or > to select the desired coach.

The audio coaching is provided according to your exercise target after the exercise starts.

Creating your own coach

You can create your own coach according to your exercise target on the Samsung Health app.

1 Launch the **Samsung Health** app on the mobile device.

2 Tap **Running** → **TRACK** and select the coach under the pace target.

3 Tap **ADD** and enter details.

4 Tap **DONE** to save the coach.

The coach is added to the Samsung Gear app on the mobile device.

Additional information

- Samsung Health is intended for fitness and wellness purposes only and is not intended for use in the diagnosis of disease or other conditions, or in the cure, mitigation, treatment, or prevention of disease.
- The available functions, features and addable applications for Samsung Health may vary from country to country due to different local laws and regulations. You should check the features and applications available in your specific region before use.
- Samsung Health applications and its service can be changed or discontinued without prior notice.
- The purpose for such data collection is limited to providing the service that you have requested, including providing additional information to enhance your wellness, back up/sync data, data analysis and statistics or to develop and provide better services. (But if you sign in to your Samsung account from Samsung Health, your data may be saved on the server for data backup purposes.) Personal information may be stored until the completion of such purposes. To delete any data you have shared with social networks or transferred to storage devices, you must delete them separately.
- You assume full responsibility for the inappropriate use of data shared on social networks or transmitted to others. Use caution when sharing your personal data with others.
- If the earbuds are connected to a mobile device, verify the communication protocol to confirm proper operation. If you use a wireless connection, such as Bluetooth, the earbuds may be affected by electronic interference from other devices. Avoid using the earbuds near other devices that transmit radio waves.
- Please read Terms and Conditions and Privacy Policy of Samsung Health carefully before using it.
- Measured distance may differ from the actual distance due to uneven strides, walking in place, and pacing around.
- You can view your workout records while wearing the earbuds on the Samsung Health app on your connected mobile device.
- Only records from the previous 30 days are saved in the earbuds. Connect the earbuds to your mobile device within 30 days after you finished your workout and save the records to the Samsung Health app.

Using call features

When the earbuds are connected to a mobile device, you can answer and control calls from the connected mobile device.

Answering or declining a call

When a call comes in while you are wearing the earbuds, they will emit a sound.

To answer the call, double-tap the touchpad.

To decline the call, tap and hold the touchpad.

Adjusting the volume

Drag your finger upwards or downwards on the touchpad to adjust the volume during a call.

Answering a second call

When a second call comes in during a call, the earbuds will emit a sound.

To end the current call and answer the second call, tap and hold the touchpad.

To place the current call on hold and answer the second call, double-tap the touchpad.

To switch between the current call and the held call, double-tap the touchpad.

Turning off the microphone

Tap and hold the touchpad to turn off the microphone so that the other party cannot hear you.

Ending a call

Double-tap the touchpad to end the current call.

Using ambient sound mode

Hear your surroundings while you are listening to music outdoors, so you can quickly detect any potentially dangerous situations.

Tap and hold the touchpad and release it when you hear “Turn on ambient sound.” Then, you will hear “Ambient sound turned on” and the feature will be activated.



- The feature will only be activated when you put both earbuds in your ears.
- You can activate or deactivate this feature via the connected mobile device. Refer to [Customising settings](#) for more information.
- If you use the ambient sound volume feature in ambient sound mode, you can control the volume depending on the situation or place. Refer to [Ambient sound](#) for more information.
- If you use the voice focus feature in ambient sound mode, you can make voices stand out more clearly. Refer to [Ambient sound](#) for more information.
- During a call, ambient sound mode turns off automatically. After the call, the mode returns to the previous state.
- In ambient sound mode, feedback may occur when adjusting the volume or touching the microphone.
- In ambient sound mode, you will be able to hear loud external sounds.
- The feature can be used after you connect your earbuds to the Samsung Gear app for the first time.

Samsung Gear and Gear IconX PC Manager

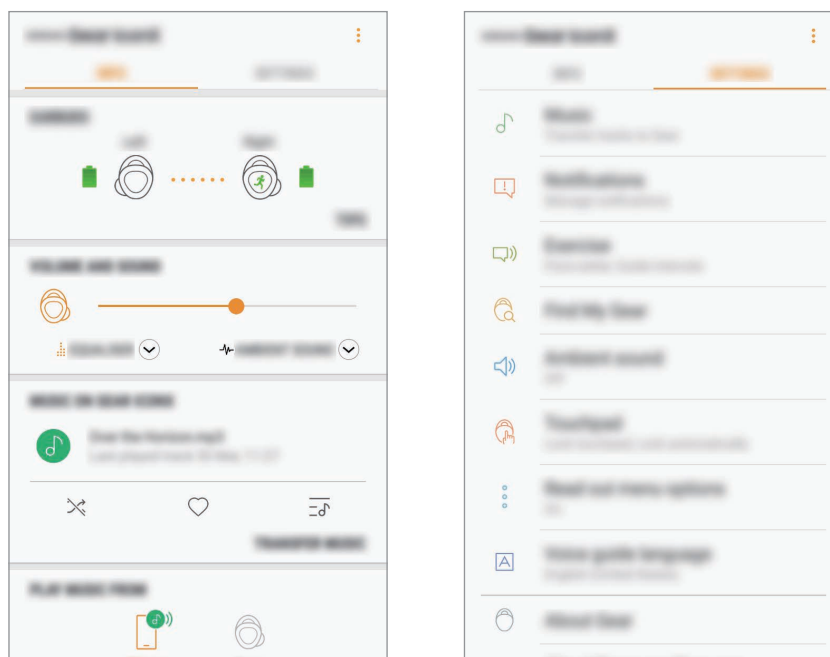
Samsung Gear

Samsung Gear introduction

To connect the earbuds to a mobile device, you must install the Samsung Gear app on your mobile device. Using the Samsung Gear app, you can customise your earbud settings.

Launch the **Samsung Gear** app on the mobile device.


If it is the first time connecting the earbuds and a mobile device, refer to [Connecting the earbuds to a mobile device](#) for more information.



Some features may not be available depending on the type of connected mobile device.

Disconnecting devices from the earbuds

Insert the earbuds into the charging case. The Bluetooth connection will end.

To manually disconnect the earbuds from your mobile device, put the earbuds in your ears. Launch the **Samsung Gear** app on the mobile device and tap  → **Disconnect**. Or, on your mobile device, tap **Settings** → **Connections** → **Bluetooth** and unpair the earbuds and your mobile device.



The earbuds do not have a power-on/off function. If the earbuds are not used for a predefined length of time after removed from your ears, the earbuds will enter sleep mode and the mobile device will be disconnected. To enter Bluetooth pairing mode again, insert the earbuds into the charging case and close it. Then, open the charging case again.

Reconnecting devices and the earbuds

To reconnect the earbuds to a device, insert them into the charging case and close it. Then, open the charging case again. Alternatively, tap **CONNECT** on the top right of the **Samsung Gear** app on your mobile device.

Connecting with new earbuds

You can temporarily disconnect the earbuds from your mobile device and connect additional ones.

Launch the **Samsung Gear** app on the mobile device and tap  → **Connect new Gear**.

Connecting with other devices

Launch the **Samsung Gear** app on the mobile device and tap  → **Disconnect**. Or, on your mobile device, tap **Settings** → **Connections** → **Bluetooth** and unpair the earbuds and your mobile device.


The Bluetooth connection between the earbuds and previous mobile device will end.

After disconnecting earbuds from the previous mobile device, you can connect the earbuds with another mobile device.

Insert the earbuds into the charging case and close it. Press and hold the charging case's Connect button. Launch the **Samsung Gear** app and follow the on-screen instructions to complete the connection.

Checking the user manual

You can check the earbuds' user manual on your mobile device.

Launch the **Samsung Gear** app on the mobile device and tap  → **User manual**.

Viewing earbud status

View and customise the status of the earbuds connected to your mobile device.

Launch the **Samsung Gear** app on the mobile device and tap **INFO**.

- **EARBUDS:** View the connection status, the remaining battery level, and the exercise earbud of the earbuds.
- **VOLUME AND SOUND:** Check and adjust the earbud volume. You can also select an equaliser mode and use the ambient sound mode.
- **MUSIC ON GEAR ICONX:** View the file name of the currently playing music or tap **TRANSFER MUSIC** to transfer music files to the earbuds. You can make playlists with the music files saved in your earbuds.



The actual available capacity of the earbud may differ from the capacity displayed on the Samsung Gear app. The available capacity may change when you update the app.

- **PLAY MUSIC FROM:** Select whether to listen to music through your earbuds or mobile device.
- **HEALTH:** View your exercise information detected by the earbuds.

Customising settings

View and customise the settings of the earbuds connected to your mobile device.

Launch the **Samsung Gear** app on the mobile device and tap **SETTINGS**.

Music

- **Transfer tracks to Gear:** Transfer music files from your mobile device to the earbuds. Refer to [Transferring music files to the earbuds](#) for more information.
- **Music control feedback:** Tap **Voice** or **Beeping** for the feedback type you hear when you touch the touchpad to control music playback.
- **Play music from:** Select whether to play music from the earbuds or your mobile device. If you play music from the earbuds, you will not hear music or the Samsung Health app's voice guide from your mobile device.

Notifications

You will receive notifications from the mobile device's apps via the earbuds. If you want to use this feature, tap the switch to activate it.

- **Manage notifications:** Select the apps you want to receive notifications from and change the notification settings for each app.
- **Read out while using phone:** You can set the earbuds to receive notifications of the mobile device even when you are using the mobile device.

Exercise

You can record your exercise information, such as the duration, distance, and calories burnt, depending on the type of exercise performed.





If the touch-sensitive sensor does not make contact with your ear, the earbud may not work. Use the wingtips and earbud tips that fit your ears.

- **Pace-setter:** Select a coach to receive audio coaching during the exercise. If you want to use this feature, tap the switch to activate it.
- **Guide intervals:** Activate the audio guide to hear exercise information during your workout, and select an interval for the audio guide messages. If you want to use this feature, tap the switch to activate it.

- **Exercise earbud:** Set an earbud as the exercise earbud to record exercise information. The right earbud is set as the exercise earbud by default.
- **Detect workouts:** Detect a workout automatically and record it. If you want to use this feature, tap the switch to activate it.
- **Welcome message:** If you have not exercised for a few days, an audio greeting will tell you your past workout information and welcome you when you wear the earbuds. If you want to use this feature, tap the switch to activate it.

Find My Gear

If you misplace your earbuds, use the Samsung Gear app on your mobile device to find it.

- 1 Launch the **Samsung Gear** app on the mobile device and tap **SETTINGS** → **Find My Gear**.
- 2 Tap .
- 3 Tap  on your mobile device to stop the beeping sound.



Do not use this feature when wearing the earbuds as it may result in hearing damage.

Ambient sound

Hear your surroundings while you are listening to music outdoors, so you can quickly detect any potentially dangerous situations. If you want to use this feature, tap the switch to activate it.


- **Ambient sound volume:** You can control the volume depending on the situation or place.
- **Voice focus:** You can make voices stand out more clearly. To use the voice focus feature, tap the switch to activate it.

Touchpad

You can prevent unintended actions by using the touchpad lock feature.

- **Lock touchpad:** Activate the lock feature. To use the touchpad lock feature, tap the switch to activate it. Refer to [Using the touchpad lock feature](#) for more information.
- **Lock automatically:** You can set your touchpad to activate the lock feature automatically. Tap **Lock automatically** and select an option. Refer to [Using the touchpad auto lock feature](#) for more information.

Read out menu options

Set the read out menu options through the earbuds. You can select the menu items to use or reorder them. To reorder the read out menu options, drag  next to the options you want to reorder and move it to the place you want. If you want to use this feature, tap the switch to activate it.

Voice guide language

Select the language for the voice feedback you receive from the earbuds.



The voice guide supports 9 languages. English may be used if the language selected on the Settings screen is not supported.

About Gear

View the information of the earbuds.

- **Update Gear software:** Update the Gear to the latest software.
- **Legal information:** View the legal information for the earbuds.
- **Device name:** Check the name of the earbuds.
- **Reset Gear:** If you experience a problem while using the earbuds, such as an unresponsive touchpad, or when you want to connect the earbuds to a new mobile device, you can reset the earbuds.
- **Tips:** Check the tips for the earbuds.
- **Battery information:** Check the earbuds and charging case's battery information.


About Samsung Gear app

View the Samsung Gear app's version information. If necessary, tap **Updates available** to update the Samsung Gear app to the latest version.

Gear IconX PC Manager

Installing Gear IconX PC Manager

To send music from a computer to the earbuds, you must install Gear IconX PC Manager on your computer.

- 1 Check the direction of each earbud, correctly insert them into their corresponding slots in the charging case, and close it.
- 2 Connect the charging case to the computer via the USB cable.
- 3 On your computer's desktop, click  → **Computer**.
- 4 Open **IconX_R** or **IconX_L** → **TOOLS**, and then double-click the Gear IconX PC Manager installation file.
- 5 Follow the on-screen instructions to complete the installation.



You can also download Gear IconX PC Manager from the Samsung website (www.samsung.com).

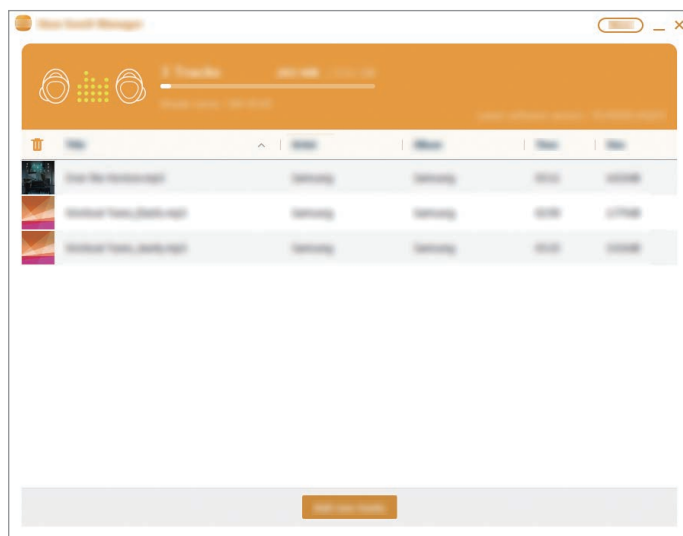
Gear IconX PC Manager introduction

You can customise your earbud settings with Gear IconX PC Manager.



If you replace a lost earbud, place the earbuds in the charging case and close it, then connect the case to your computer. Then, use Gear IconX PC Manager to pair the two earbuds.

Insert the earbuds into the charging case and connect the case to your computer. Then, tap **Gear IconX** → **More**.



About PC software

View the Gear IconX PC Manager's version information. If necessary, tap **Update** to update Gear IconX PC Manager to the latest version.

Sync earbuds

Tap **Sync earbuds** to store the music in both earbuds automatically when you manually transfer the music files to your mobile device.

Appendix

Troubleshooting

Before contacting a Samsung Service Centre, please attempt the following solutions. Some situations may not apply to your earbuds.

Your earbuds do not work

- The battery may be completely discharged. Charge the battery completely before using the earbuds.
- If an earbud's touch-sensitive sensor does not make contact with your ear, the earbud may not work. If you do not hear a sound informing you that the earbuds are detected, remove the earbuds from your ears and put them in again.
- If the touchpad does not recognise the earbuds or they do not work, you can press and hold the Power button to turn off and restart the earbuds.

Another Bluetooth device cannot locate your earbuds

- Check the direction of each earbud, correctly insert them into their corresponding slots in the charging case, and close it. Then, press and hold the charging case's Connect button.
- Ensure that your earbuds and the other Bluetooth device are within the Bluetooth connection range (10 m). The distance may vary depending on the environment the devices are used in.

If the tips above do not solve the problem, contact a Samsung Service Centre.

A Bluetooth connection is not established or your earbuds and the mobile device are disconnected

- Ensure there are no obstacles, such as walls or electrical equipment, between the devices.
- Ensure that the latest version of the Samsung Gear app is installed on the mobile device. If necessary, update the Samsung Gear app to the latest version.
- Ensure that your earbuds and the other Bluetooth device are within the Bluetooth connection range (10 m). The distance may vary depending on the environment the devices are used in.
- Restart the mobile device and relaunch the Samsung Gear app.

The battery does not charge properly (For Samsung-approved chargers)

- Ensure that the charging contacts of the earbuds and the charging case are in contact with each other.
- Ensure that the charger is connected properly.
- If the battery contacts are dirty, the battery may not charge properly. Wipe both gold-coloured contacts with a dry cloth and try charging the battery again.
- Visit a Samsung Service Centre and have the battery replaced.

The charging time and the battery life is different between the earbuds

- The main earbud's battery life will be less than the other earbud because it operates more features.
- The main earbud takes longer to charge than the other one.

The battery depletes faster than when first purchased

- When you expose the earbuds or the battery to very cold or very hot temperatures, the useful charge may be reduced.
- The battery is consumable and the useful charge will get shorter over time.

You cannot hear others speaking

- Adjust the earbud volume.
- Adjust the volume on the connected device when you cannot hear sounds on your earbuds at full volume.

Sound echoes during a call

Adjust the volume by dragging your finger upwards or downwards on the touchpad, or move to another area.

Audio quality is poor

- Wireless network services may be disabled due to issues with the service provider's network. Ensure to keep the earbuds away from electromagnetic waves.
- Ensure that your earbuds and the other Bluetooth device are within the maximum Bluetooth range (10 m). The distance may vary depending on the environment the devices are used in.
- You may experience drops in volume or noise depending on the connected device's volume. To avoid this, appropriately adjust the connected device's sound.

Your earbuds sound comes slower than the screen when playing videos and games

The earbuds may have a time lag between the video and sound output when playing videos or games when connected to a mobile device.

Your earbuds are hot to the touch

When you use the earbuds for an extended period of time, it may feel hot to the touch. This is normal and should not affect your earbuds' lifespan or performance.

If the earbuds overheat or feel hot for a prolonged period, do not use them for a while. If the earbuds continue to overheat, contact a Samsung Service Centre.

A small gap appears around the outside of the earbud case

- This gap is a necessary manufacturing feature and some minor rocking or vibration of parts may occur.
- Over time, friction between parts may cause this gap to expand slightly.

Managing the earbuds

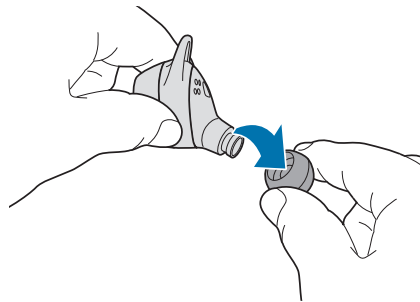
Basic maintenance

- Use a soft, dry cloth to clean the earbuds after use.
- Keep the earbuds dry. Prevent liquid from contacting or entering the earbuds.

Cleaning the receiver

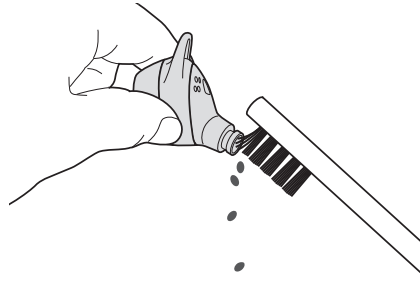
If the volume is lower than it should be with the current setting, clean the receiver.

- 1 Remove the earbud tip from the protruding part at the bottom of the earbud.



Do not pull the earbud tip excessively. The earbud tip may tear.

- 2 Remove any earwax or debris from the receiver with the brush or other tools.

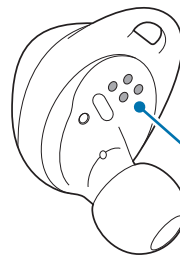


Do not use excessive force while removing earwax or debris. The receiver may be damaged.

- 3 Cover the earbud with the earbud tip.

Cleaning the charging contacts

If the battery does not charge properly, wipe both gold-coloured contacts with a dry cloth.



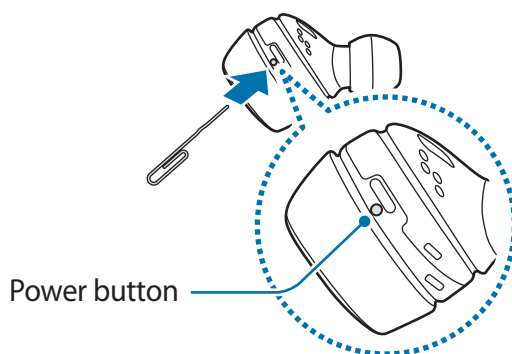
Charging contacts

Turning off and restarting the earbuds

If you do not use the earbuds for an extended period, turn off the earbuds. If the touchpad becomes unresponsive or the earbuds do not work properly, turn off and restart the earbuds.

- 1 Remove the wingtip from an earbud. Then, use a paper clip to press and hold the Power button above the earbuds for more than 10 seconds.

The earbuds will be deactivated.



- 2 Follow the same procedure for the other earbud to turn it off.
- 3 Press and hold the Power button again.
The earbud will restart after the sensor indicator light flashes three times.
- 4 Follow the same procedure for the other earbud to restart it.

Removing the battery

- **To remove the battery, contact an authorised service centre. To obtain battery removal instructions, please visit www.samsung.com/global/ecodesign_energy.**
- For your safety, you **must not attempt to remove** the battery. If the battery is not properly removed, it may lead to damage to the battery and device, cause personal injury, and/or result in the device being unsafe.
- Samsung does not accept liability for any damage or loss (whether in contract or tort, including negligence) which may arise from failure to precisely follow these warnings and instructions, other than death or personal injury caused by Samsung's negligence.

Copyright

Copyright © 2017 Samsung Electronics

This manual is protected under international copyright laws.

No part of this manual may be reproduced, distributed, translated, or transmitted in any form or by any means, electronic or mechanical, including photocopying, recording, or storing in any information storage and retrieval system, without the prior written permission of Samsung Electronics.

Trademarks

- SAMSUNG and the SAMSUNG logo are registered trademarks of Samsung Electronics.
- Bluetooth® is a registered trademark of Bluetooth SIG, Inc. worldwide.



- All other trademarks and copyrights are the property of their respective owners.

Model: SM-R140

Rated voltage/current: 5 V / 150 mA (earbuds), 5 V / 500 mA (charging case)

FCC ID: ASLSM-R140

Made in Vietnam by Samsung

Samsung, GU46, 6GG, UK

