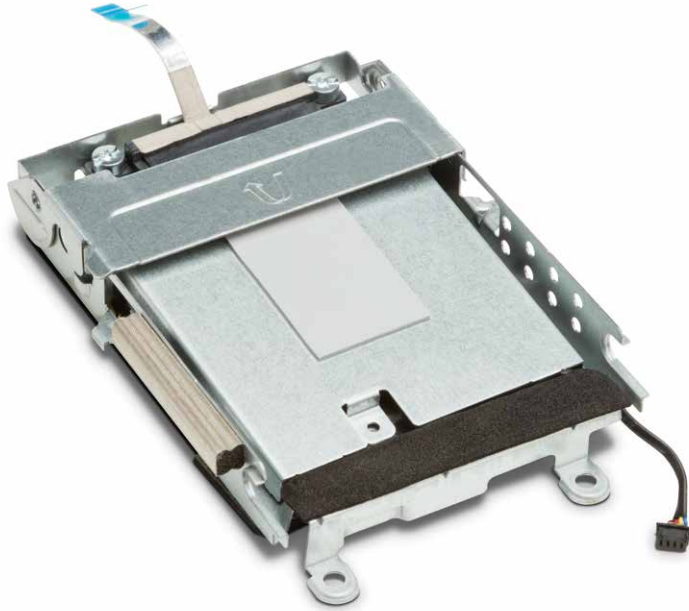


Data sheet

HP G4 Mini 2.5-inch SATA Drive Bay Kit



Add a 2.5" SSD or HDD to your HP Desktop Mini G4 with easy to install and remove HP G4 Mini 2.5-inch SATA Drive Bay Kit.

Specifications




HP G4 Mini 2.5-inch SATA Drive Bay Kit

Part number	3TK91AA
Dimensions	3.38 x 4.68 x 0.91 in (8.6 x 11.9 x 2.33 cm)
Weight	.14 lb (67gr)
Compatibility	HP EliteDesk 800 G4 DM (35W), HP EliteDesk 800 G4 DM (65W), HP EliteDesk 705 G4 DM, HP ProDesk 600 G4 DM, HP ProDesk 400 G4 DM, HP 260 G3 DM.
What is in the box?	HP G4 Mini 2.5-inch SATA Drive Bay Kit
Country of origin	China

Sign up for updates
hp.com/go/getupdated

   
Share with colleagues


Rate this document

