

## Datasheet

# HP ProDesk 400 G4 Desktop Mini PC



## A reliable, future-ready performer.

Designed to fit the modern workspace with a compact, stylish appearance, the ultra-small HP ProDesk 400 Desktop Mini is an affordable PC with reliability and performance for your growing business.



## HP recommends Windows 10 Pro.

- Windows 10 Pro<sup>1</sup>
- Intel® Core™ processors<sup>2</sup>

### Powerful and configurable

- Power through your day with a solution you can flexibly configure with an 8th Gen Intel® Core™ processor<sup>2</sup> and options that include Intel® Optane™ memory<sup>3</sup>, SSD storage<sup>4</sup>, and up to 32 GB of DDR4 memory.<sup>4</sup>

### Expansion that extends your investment

- Maximize the life of your PC as your business requirements change with a wide range of storage options<sup>4</sup> such as the latest M.2 slots, traditional SATA drives, and a configurable I/O port that lets you expand on your own schedule.

### Place it where you need it

- Take your footprint down to near zero with a PC that attaches behind an HP EliteDisplay<sup>5</sup>, or mount<sup>6</sup> and secure it almost anywhere with HP accessories.<sup>4</sup> Declutter your space with short cables and rear I/O ports that connect to a range of displays.<sup>3</sup>

### HP-exclusive security and manageability

- Help prevent data breaches and downtime with HP BIOSphere Gen4<sup>7</sup> and protect against web-based attacks with HP Sure Click.<sup>8</sup> Easily manage devices through Microsoft System Center Configuration Manager with HP Manageability Integration Kit.<sup>9</sup>

### Featuring

- Be productive in any situation with Windows 10 Pro and powerful security, collaboration, and connectivity features from HP.<sup>1</sup>
- Keep productivity high and downtime low with HP BIOSphere Gen4 firmware-level automation. Your PCs have extra protection thanks to automatic updates and security checks.<sup>7</sup>
- Help protect your PC from websites, attachments, malware, ransomware, and viruses with hardware-enforced security from HP Sure Click.<sup>8</sup>
- The HP Manageability Integration Kit helps speed up image creation and management of hardware, BIOS, and security through Microsoft System Center Configuration Manager.<sup>9</sup>
- HP Client Security Manager Gen4 features multi-factor authentication, HP Device Access Manager, HP SpareKey, and HP Password Manager. These tools work to keep data out of reach and defend against theft, attacks, and unauthorized users.<sup>10</sup>
- Greatly improve data, voice, and video communication transfer rates over challenged LAN and Wi-Fi networks with HP Velocity.
- ITDMs can quickly help create, improve, and secure custom Windows images with HP Image Assistant Gen3.
- Enjoy always-on, included self-help support built right into your PC, for the life of your PC, with HP Support Assistant.
- Rest easy with a PC that goes the distance and is designed to pass HP's Total Test Process.

# HP ProDesk 400 G4 Desktop Mini PC Specifications Table



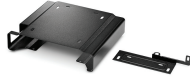
<b>Form Factor</b>	Mini
<b>Available Operating System</b>	Windows 10 Pro 64 – HP recommends Windows 10 Pro. <sup>1</sup> Windows 10 Home 64 <sup>1</sup> Windows 10 Home Single Language 64 <sup>1</sup> FreeDOS 2.0
<b>Maximum Memory</b>	Up to 32 GB DDR4-2666 SDRAM <sup>6,7</sup> Standard memory note: Transfer rates up to 2666 MT/s.
<b>Memory slots</b>	2 SODIMM
<b>Internal Storage</b>	500 GB up to 2 TB SATA HDD <sup>3</sup> 256 GB 128 GB up to 512 GB PCIe® NVMe™ M.2 SSD <sup>3</sup>
<b>Audio</b>	Conexant CX20632 codec, universal audio jack, headset and headphone front ports (3.5 mm), multi-streaming capable
<b>Communications</b>	LAN: Realtek RTL8111HSH-CG GbE WLAN: Intel® Dual Band Wireless-AC 9560 802.11ac (2x2) and Bluetooth® 5 M.2, non-vPro™ <sup>8</sup>
<b>Expansion Slots</b>	1 M.2 2230; 1 M.2 2230/2280 (1 M.2 slot for WLAN and 1 M.2 2230/2280 slot for storage.)
<b>Ports and Connectors</b>	Front: 1 headphone; 1 headset connector; 1 USB 3.1 Gen 1; 1 USB 3.1 Gen 1 (charging) <sup>15</sup> Rear: 1 external antenna connector; 1 power connector; 1 RJ-45; 2 USB 2.0; 2 DisplayPort™ 1.2; 2 USB 3.1 Gen 1; 1 configurable video port <sup>10</sup>
<b>Internal Drive Bays</b>	One 2.5" HDD
<b>Input Device</b>	HP USB Wired Keyboard; USB Business Slim Standalone Wired Keyboard; HP USB Business Slim Smart Card (CCID) Keyboard <sup>9</sup> HP USB Optical Mouse <sup>9</sup>
<b>Available Software</b>	HP Device Access Manager; HP ePrint Driver + JetAdvantage; HP Hotkey Support; HP Jumpstart; HP Noise Cancellation Software; HP PhoneWise; HP Recovery Manager; HP Secure Erase; HP Support Assistant; HP Sure Click; HP Velocity; Microsoft Defender; Native Miracast Support; HP Wireless Wakeup; Buy Office (sold separately); HP WorkWise <sup>13</sup>
<b>Security Management</b>	DriveLock; Hood sensor; HP BIOSphere; HP Credential Manager; HP Password Manager; HP Power On Authentication; HP Security Manager; HP Spare Key; Power-on password (via BIOS); Removable media write/boot control; SATA port disablement (via BIOS); Setup password (via BIOS); Support for chassis padlocks and cable lock devices; Trusted Platform Module TPM 2.0 Embedded Security Chip (SLB9670 - Common Criteria EAL4+ Certified); USB enable/disable (via BIOS); Master Boot Record Security; HP Client Security Suite Gen 4; Pre-boot Authentication; Serial enable/disable (via BIOS) <sup>12</sup>
<b>Management Features</b>	HP BIOS Config Utility (download); HP Client Catalog (download); HP Driver Packs (download); HP System Software Manager (download); Update BIOS via Cloud or Network (BIOS feature); Ivanti Management Suite; HP Management Integration Kit for Microsoft System Center Configuration Management Gen 2 <sup>14</sup>
<b>Power</b>	65 W external power adapter, up to 89% efficiency
<b>Dimensions</b>	17.7 x 17.5 x 3.4 cm
<b>Weight</b>	1.25 kg (Configured with 1 HDD only. Exact weight depends on configuration.)
<b>Environmental</b>	Low halogen <sup>11</sup>
<b>Energy Efficiency Compliance</b>	ENERGY STAR® certified; EPEAT® Gold <sup>5</sup>
<b>Warranty</b>	1 year (1-1-1) limited warranty and service offering includes 1 year of parts, labor and on-site repair. Terms and conditions vary by country. Certain restrictions and exclusions apply.

## HP ProDesk 400 G4 Desktop Mini PC

### Accessories and services (not included)

---

**HP Desktop Mini Security/Dual VESA Sleeve v2**



Wrap your HP Desktop Mini PC in the HP Desktop Mini Security/Dual VESA Sleeve v2 to securely mount it—with or without an Expansion Module<sup>1</sup>—behind your display, position the solution on a wall, and lock it down with the integrated security bracket and optional HP Ultra-Slim Cable Lock.

**Product number: 2JA32AA**

**HP Desktop Mini Rack Mount Tray Kit Module**



Put your HP Desktop Mini PCs to work behind the scenes with HP Desktop Mini Rack Mount Tray Kit Modules, which holds up to eight PCs and fit into the HP 100kg Sliding Shelf.<sup>1</sup>

**Product number: G1K21AA**

**HP Wireless Slim Business Keyboard**



Enjoy easy data entry and wireless connectivity with the HP Wireless Business Slim Keyboard, designed to complement the 2015 class of HP Business PCs.

**Product number: N3R88AA**

**HP Keyed Cable Lock 10 mm**



Help keep your notebook safe in the office and high-traffic areas by tethering it to a secure surface with the HP Master Keyed Cable Lock 10mm, designed specifically for ultra-thin profile notebooks.

**Product number: T1A62AA**

**HP 3 year Next Business Day Onsite Hardware Support for Desktops**

Receive 3 years of next business day onsite HW Support from an HP-qualified technician for your computing device, if the issue cannot be solved remotely.

**Product number: U6578E**



# HP ProDesk 400 G4 Desktop Mini PC

## Messaging Footnotes

- <sup>1</sup> Not all features are available in all editions or versions of Windows. Systems may require upgraded and/or separately purchased hardware, drivers, software or BIOS update to take full advantage of Windows functionality. Windows 10 is automatically updated, which is always enabled. ISP fees may apply and additional requirements may apply over time for updates. See <http://www.windows.com/>.
- <sup>2</sup> Multi-Core is designed to improve performance of certain software products. Not all customers or software applications will necessarily benefit from use of this technology. Performance and clock frequency will vary depending on application workload and your hardware and software configurations. Intel's numbering, branding and/or naming is not a measurement of higher performance.
- <sup>3</sup> Intel® Optane™ memory system acceleration does not replace or increase the DRAM in your system and requires configuration with an optional Intel® Core™ i5 or i7+ processor.
- <sup>4</sup> Sold separately or as an optional feature.
- <sup>5</sup> Display sold separately. Requires HP B300 or B500 PC Mounting Bracket for Monitors, sold separately. See display QuickSpecs for bracket guidance.
- <sup>6</sup> Mounting hardware sold separately.
- <sup>7</sup> HP BIOSphere Gen4 requires Intel® or AMD 8th Gen processors. Features may vary depending on the platform and configurations.
- <sup>8</sup> HP Sure Click is available on select HP platforms and supports Microsoft® Internet Explorer, Google Chrome, and Chromium™. Supported attachments include Microsoft Office (Word, Excel, PowerPoint) and PDF files in read-only mode. Check <http://h20195.www2.hp.com/v2/GetDocument.aspx?docname=4AA7-0922ENW> for all compatible platforms as they become available.
- <sup>9</sup> HP Manageability Integration Kit can be downloaded from <http://www.hp.com/go/clientmanagement>
- <sup>10</sup> HP Client Security Manager Gen4 requires Windows and 8th generation Intel® or AMD processors or later.

## Technical specifications disclaimers

- <sup>1</sup> Not all features are available in all editions or versions of Windows. Systems may require upgraded and/or separately purchased hardware, drivers, software or BIOS update to take full advantage of Windows functionality. Windows 10 is automatically updated, which is always enabled. ISP fees may apply and additional requirements may apply over time for updates. See <http://www.windows.com/>.
- <sup>2</sup> For hard drives and solid state drives, GB = 1 billion bytes. TB = 1 trillion bytes. Actual formatted capacity is less. Up to 16 GB (for Windows 7) and 36 GB (for Windows 8.1/10) of system disk is reserved for the system recovery software.
- <sup>3</sup> Your product does not support Windows 8 or Windows 7. In accordance with Microsoft's support policy, HP does not support the Windows 8 or Windows 7 operating system on products configured with Intel® and AMD 7th generation and forward processors or provide any Windows 8 or Windows 7 drivers on <http://www.support.hp.com>
- <sup>5</sup> EPEAT® registered where applicable. EPEAT registration varies by country. See [www.epeat.net](http://www.epeat.net) for registration status by country. See HP's 3rd party option store for solar energy accessory at [www.hp.com/go/options](http://www.hp.com/go/options).
- <sup>6</sup> For systems configured with more than 3 GB of memory and a 32-bit operating system, all memory may not be available due to system resource requirements. Addressing memory above 4 GB requires a 64-bit operating system. Memory modules support data transfer rates up to 2133 MT/s; actual data rate is determined by the system's configured processor. See processor specifications for supported memory data rate.
- <sup>7</sup> All memory slots are customer accessible / upgradeable.
- <sup>8</sup> Wireless access point and internet service required. The specifications for the 802.11ac WLAN are draft specifications and are not final. If the final specifications differ from the draft specifications, it may affect the ability of the notebook to communicate with other 802.11ac WLAN devices.
- <sup>9</sup> Availability may vary by country.
- <sup>10</sup> (1) external antenna connector: must be configured at time of purchase; (1) configurable video port: choice of DisplayPort™ 1.2, HDMI™ 2.0, VGA, 1 serial or USB Type-C™ with display output. When configurable I/O port has been configured, one DisplayPort™ may be blocked in select configurations; (2) USB 3.1 Gen 1: 5 GBit/s data speed, upgradeable to USB 3.1 Gen 2 port (10 GBit/s data speed) in select configurations; (1) USB 3.1 Type-C™ Gen 2: sold separately or as an optional feature. When configurable I/O port has been configured, one DisplayPort may be blocked in select configurations.
- <sup>11</sup> External power supplies, power cords, cables and peripherals are not Low Halogen. Service parts obtained after purchase may not be Low Halogen.
- <sup>12</sup> HP BIOSphere: HP BIOSphere Gen4 features may vary depending on the PC platform and configurations requires 8th Gen Intel® processors; HP Client Security Suite Gen 4: HP Client Security Suite Gen 4 requires Windows and Intel® or AMD 8th generation processors; HP Password Manager: HP Password Manager requires Internet Explorer or Chrome™ or Firefox. Some websites and applications may not be supported. User may need to enable or allow the add-on / extension in the internet browser; Trusted Platform Module TPM 2.0 Embedded Security Chip shipped with Windows 10 (Common Criteria EAL4+ Certified)(FIPS 140-2 Level 2 Certified): In some scenarios, machines pre-configured with Windows OS might ship with TPM turned off.
- <sup>13</sup> HP Native Miracast Support: Miracast is a wireless technology your PC can use to project your screen to TVs, projectors, and streaming; HP Secure Erase: Secure Erase for the methods outlined in the National Institute of Standards and Technology Special Publication 800-88. Supported on Elite platforms with BIOS version F.03 or higher; HP ePrint Driver + JetAdvantage: HP ePrint Driver requires an Internet connection to HP web-enabled printer and HP ePrint account registration (for a list of eligible printers, supported documents and image types and other HP ePrint details, see [www.hp.com/go/eprintcenter](http://www.hp.com/go/eprintcenter)). Print times and connection speeds may vary; HP Support Assistant: HP Support Assistant requires Windows and Internet access; Microsoft Defender: Microsoft Defender Opt in and internet connection required for updates; HP PhoneWise: HP PhoneWise Client may not be available with HP Workwise. For supported platforms and HP PhoneWise system requirements see [www.hp.com/go/HPPhoneWise](http://www.hp.com/go/HPPhoneWise); HP WorkWise: HP WorkWise smartphone app is available as a free download on the Google Play. As of September 2017, HP WorkWise will no longer support iOS or iPhone® devices; HP Sure Click: HP Sure Click is available on select HP platforms and supports Microsoft® Internet Explorer and Chromium™. Check <http://h20195.www2.hp.com/v2/GetDocument.aspx?docname=4AA7-0922ENW> for all compatible platforms as they become available; HP Velocity: Availability may vary by country.
- <sup>14</sup> HP Driver Packs: HP Driver Packs not preinstalled, however available for download at <http://www.hp.com/go/clientmanagement>; HP Management Integration Kit for Microsoft System Center Configuration Management Gen 2: can be downloaded from <http://www8.hp.com/us/en/ads/clientmanagement/overview.html>; Ivanti Management Suite: subscription required.
- <sup>15</sup> (2) USB 3.1 Gen 1: 5 GBit/s data speed, one port upgradeable to USB 3.1 Gen 2 port (10 GBit/s data speed) in select configurations.

## Sign up for updates

[www.hp.com/go/getupdated](http://www.hp.com/go/getupdated)

© Copyright 2018 HP Development Company, L.P. The information contained herein is subject to change without notice. The only warranties for HP products and services are set forth in the express warranty statements accompanying such products and services. Nothing herein should be construed as constituting an additional warranty. HP shall not be liable for technical or editorial errors or omissions contained herein.

Intel, Core and Intel vPro™ are trademarks of Intel Corporation in the U.S. and other countries. ENERGY STAR and the ENERGY STAR mark are registered trademarks owned by the U.S. Environmental Protection Agency. Bluetooth is a trademark of its proprietor used by HP Inc. under license. Linux® is the registered trademark of Linus Torvalds in the U.S. and other countries. DisplayPort™ and the DisplayPort™ logo are trademarks owned by the Video Electronics Standards Association (VESA®) in the United States and other countries. All Rights Reserved. Adobe PDF is a trademark of Adobe Systems Incorporated. All other trademarks are the property of their respective owners.

