



CoreLine Waterproof

WT120C LED40S/840 IA1 L1200

Coreline Waterproof - 840 neutral white - Power supply unit regulating

Whether for a new building or renovation of an existing space, customers want lighting solutions that provide quality of light and substantial energy and maintenance savings. The new CoreLine Waterproof range of LED products can be used to replace traditional waterproof luminaires with fluorescent lamps. The process of selecting, installing and maintaining is so easy – it's a simple switch.

Product data

General Information		RoHS mark	
Beam angle of light source	120 °	Product Family Code	WT120C [Coreline Waterproof]
Light source colour	840 neutral white	Operating and Electrical	
Light source replaceable	No	Input voltage	220 to 240 V
Number of gear units	1 unit	Input frequency	50 to 60 Hz
Driver/power unit/transformer	PSR [Power supply unit regulating]	Inrush current	21 A
Driver included	Yes	Inrush time	0.28 ms
Optic type	No [-]	Power factor (min.)	0.9
Luminaire light beam spread	110°	Mechanical and Housing	
Connection	PI [Push-in connector 3-pole]	Housing material	Polycarbonate
Cable	-	Reflector material	Steel
Protection class IEC	Safety class I (I)	Optic material	-
Glow-wire test	850/30 [Temperature 850 °C, duration 30 s]	Optical cover/lens material	Polycarbonate
Flammability mark	F [For mounting on normally flammable surfaces]	Fixation material	Stainless steel
CE mark	CE mark	Optical cover/lens finish	Textured
ENEC mark	ENEC mark	Overall length	1250 mm
Constant light output	No		
Number of products on MCB	22		

CoreLine Waterproof

Overall width	87 mm
Overall height	96 mm

Approval and Application

Ingress protection code	IP65 [Dust penetration-protected, jet-proof]
Mech. impact protection code	IK08 [5 J vandal-protected]

Initial Performance (IEC Compliant)

Initial luminous flux	4100 lm
Luminous flux tolerance	+/-10%
Initial LED luminaire efficacy	112 lm/W
Init. Corr. colour temperature	4000 K
Init. colour rendering index	≥80
Initial chromaticity	(0.38, 0.38) SDCM <3.5
Initial input power	36.5 W
Power consumption tolerance	+/-10%

Over Time Performance (IEC Compliant)

Driver failure rate at 5,000 hours	1 %
Median useful life L70B50	50000 h
Median useful life L80B50	30000 h

Median useful life L90B50	15000 h
---------------------------	---------

Application Conditions

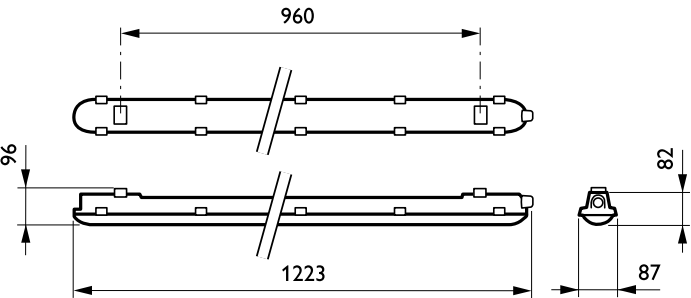
Ambient temperature range	-20 to +35 °C
Average ambient temperature	25 °C
Suitable for random switching	Yes (relates to presence/ movement detection and daylight harvesting)

Product Data

Full product code	871869939713500
Order product name	WT120C LED40S/840 IA1 L1200
EAN/UPC – product	8718699397135
Order code	39713500
Numerator – quantity per pack	1
Numerator – packs per outer box	1
Material no. (12NC)	910500465266
Net weight (piece)	1.530 kg

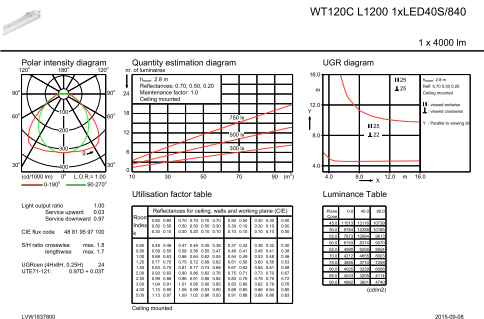


Dimensional drawing

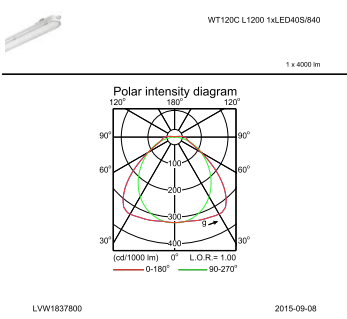


CoreLine Waterproof WT120C

Photometric data



IFGU1_WT120C L1200 1xLED40S840.EPS



IFPC1_WT120C L1200 1xLED40S840.EPS

