



CoreLine Waterproof

WT120C LED60S/840 IA1 L1500

Coreline Waterproof - 840 neutral white - Power supply unit regulating

Whether for a new building or renovation of an existing space, customers want lighting solutions that provide quality of light and substantial energy and maintenance savings. The new CoreLine Waterproof range of LED products can be used to replace traditional waterproof luminaires with fluorescent lamps. The process of selecting, installing and maintaining is so easy – it's a simple switch. Also available as an Interact Ready wireless CoreLine waterproof luminaire that works with Interact Pro lighting software and Interact Ready devices to provide a connected lighting system for SMEs

Product data

General Information		Operating and Electrical	
Beam angle of light source	120 °	ENEC mark	ENEC mark
Light source colour	840 neutral white	Constant light output	No
Light source replaceable	No	Number of products on MCB	22
Number of gear units	1 unit	RoHS mark	RoHS mark
Driver/power unit/transformer	PSR [Power supply unit regulating]	Product Family Code	WT120C [Coreline Waterproof]
Driver included	Yes	Mechanical and Housing	
Optic type	No [-]	Housing material	Polycarbonate
Luminaire light beam spread	110°		
Connection	Push-in connector 3-pole		
Cable	-		
Protection class IEC	Safety class I		
Glow-wire test	Temperature 850 °C, duration 30 s		
Flammability mark	F [For mounting on normally flammable surfaces]		
CE mark	CE mark		

CoreLine Waterproof

Reflector material	Steel
Optic material	-
Optical cover/lens material	Polycarbonate
Fixation material	Stainless steel
Optical cover/lens finish	Textured
Overall length	1530 mm
Overall width	87 mm
Overall height	96 mm

Approval and Application

Ingress protection code	IP65 [Dust penetration-protected, jet-proof]
Mech. Impact protection code	IK08 [5 J vandal-protected]

Initial Performance (IEC Compliant)

Initial luminous flux	6000 lm
Luminous flux tolerance	+/-10%
Initial LED luminaire efficacy	121 lm/W
Init. Corr. colour temperature	4000 K
Init. colour rendering index	≥80
Initial chromaticity	(0.38, 0.38) SDCM <3.5
Initial input power	49.5 W
Power consumption tolerance	+/-10%

Over Time Performance (IEC Compliant)

Driver failure rate at 5,000 hours	1 %
Median useful life L70B50	50000 h
Median useful life L80B50	30000 h
Median useful life L90B50	15000 h

Application Conditions

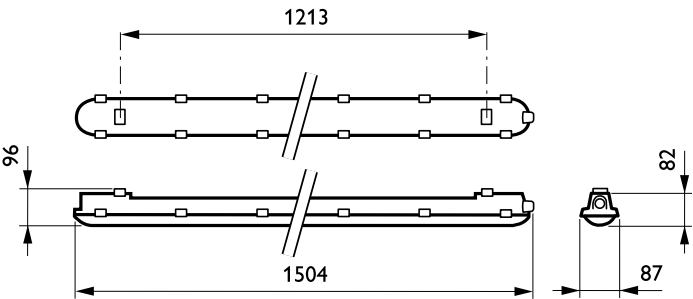
Ambient temperature range	-20 to +35 °C
Suitable for random switching	Yes (relates to presence/ movement detection and daylight harvesting)

Product Data

Full product code	871869939714200
Order product name	WT120C LED60S/840 IA1 L1500
EAN/UPC – product	8718699397142
Order code	39714200
Numerator – quantity per pack	1
Numerator – packs per outer box	1
Material no. (12NC)	910500465267
Net weight (piece)	1.820 kg

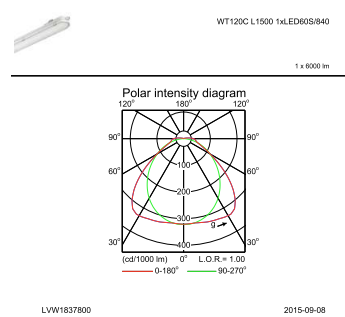
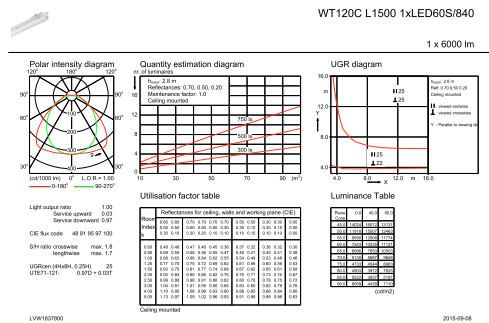


Dimensional drawing



CoreLine Waterproof WT120C

Photometric data



IFGU1_WT120C L1500 1xLED60S840.EPS

IFPC1_WT120C L1500 1xLED60S840.EPS

