

PHILIPS

SHAVER Series 7000 SensoTouch

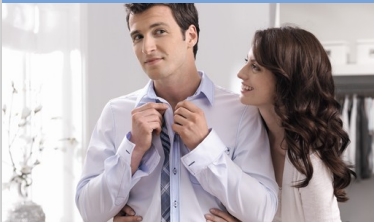
wet and dry electric
shaver

DualPrecision & GyroFlex2D

50 min cordless use/1 hr charge

Precision Trimmer and Pouch

Jet clean system



RQ1160/21



Soft touch, smooth skin

The Philips SHAVER series 7000 gives a soft touch for a smooth shave. The GyroFlex 2D system adjusts easily to the curves of your face and shaves even the shortest stubble with its DualPrecision blades.

A close, comfortable shave

- Cutting slots and holes catch even the shortest hairs
- 2-way flexing heads adjust easily to the curve
- Super Lift and Cut blades raise hairs to cut closer

Skin friendly

- Aquatec seal for a comfortable dry and a refreshing wet shave
- Smooth, low-friction SkinGlide to minimise irritation

Easy to use

- Simply rinses clean
- 50 shaving minutes, 1-hour charge
- Perfect moustache and sideburn trimming
- Jet Clean system cleans, lubricates and charges the shaver
- 2-level battery indicator with travel lock
- Charging stand keeps your shaver fully charged and ready
- 2-year guarantee, worldwide voltage and replaceable blades



asimpleswitch.com



asimpleswitch.com

Highlights

Dual Precision blades



DualPrecision blades comfortably shave both long hairs and short stubble. 1. Slots cut long hairs. 2. Holes cut stubble

Super Lift and Cut



The dual-blade system built into the Philips electric shaver lifts hairs to cut comfortably below skin level for a closer shave.

GyroFlex 2D



The GyroFlex 2D contour-following system of the shaver adjusts easily to the curves of your face, minimising pressure and irritation for a close shave.

Aquatec Wet and Dry



The Aquatec wet and dry seal of the electric shaver lets you choose how you prefer to shave. You can get a comfortable dry shave or a refreshing wet shave using a shaving gel or foam for extra skin comfort.

Fully washable shaver



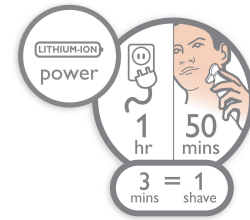
Simply pop the heads open and rinse thoroughly under the tap.

SkinGlide



The low-friction SkinGlide shaving surface of the electric shaver slides smoothly along your skin for a close, easy shave.

Cordless use - 50 mins



An energy-efficient, powerful lithium-ion battery gives you more shaves per charge. Charge it for an hour and you'll have up to 50 minutes of shaving time. Charge it for 3 minutes and you'll have enough power for one shave.

Two level battery indicator

The multi-level LED display shows when the battery is low, when you need a new head and when the travel lock is on. Travel lock prevents the product from turning on by accident. Press any button for 3 seconds to activate the travel lock so the product doesn't get turned on accidentally. A red lock symbol shows when the travel lock is on.

Click-on trimmer



Perfect your look with the SmartClick skin-friendly precision trimmer. It's ideal for maintaining a moustache and trimming sideburns.

Specifications

Shaving Performance

Contour-following: GyroFlex 2D contour following

Shaving System: DualPrecision System, Super Lift & Cut technology

Skin Comfort: SkinGlide

Styling: Skin-friendly precision trimmer

Ease of use

Charging: 1 hour, Rechargeable, Quick charge 3 min for 1 shave

Shaving time: Up to 50 minutes

Display: Two level battery indicator, Battery

full indicator, Battery low indicator, Charge indicator, Quick charge indication

Wet and Dry: Wet and dry use

Cleaning: Washable

Jet Clean: Includes Jet Clean unit

Design

Finishing: Brushed chrome deco ring, LED Display

Accessories

Pouch: Soft pouch

Maintenance: Cleaning brush, Protective cap

Power

Battery Type: Li-Ion

Automatic voltage: 100-240 V

Service

2-year guarantee

Replacement head: Replace every 2 yrs with RQ11

