

Philips  
Straightener

SalonStraight  
Essential

HP8309/00



# Straight hair made easy

## SalonStraight Essential

Straighten and style your hair with this easy to use straightener

### Beautifully styled hair

- Ceramic plates for smooth gliding and shiny hair
- 210°C professional high heat for perfect salon results

### Ease of use

- Fast heat up time, ready to use in 60 seconds
- Easy lock for convenient storage
- Swivel cord to prevent tangled wires
- 1.8 m power cord
- Universal voltage

# PHILIPS

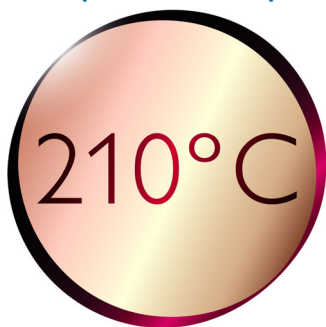
## Highlights

### Ceramic plates



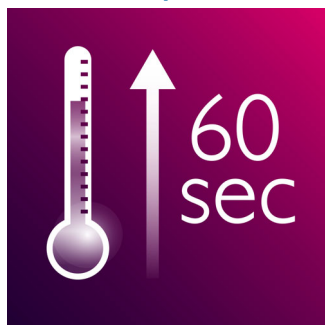
Ceramic is microscopically smooth and durable by nature and it is one of the best materials for straightening plates. The plates glide effortlessly through your hair, giving you perfect shiny hair.

### 210°C professional temperature



This high temperature enables you to change the shape of your hair, and gives you that perfect look like you've just come from the salon.

### Instant heat up



The straightener has a fast heat up time, being ready to use in 60 seconds

### Easy lock



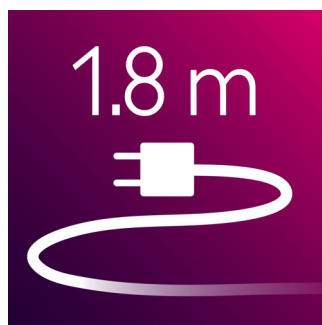
Easy lock for convenient storage

### Swivel cord



Useful swivel cord technology rotates the cord to prevent tangled wires.

### 1.8 m cord



1.8 m power cord

## Specifications

### Technical specifications

- Cord length: 1.8 m
- Heater type: PTC
- Maximum temperature: 210 °C
- Heating time: 60s
- Voltage: 110-240 V

### Features

- Ceramic coating
- Swivel cord

### Hair type

- End result: Straight
- Hair length: Long, Medium, Short
- Hair thickness: Medium, Thick, Thin

### Service

- 2-year worldwide guarantee



Issue date 2016-01-27

Version: 6.1.1

EAN: 08 71010 35268 96

© 2016 Koninklijke Philips N.V.  
All Rights reserved.

Specifications are subject to change without notice.  
Trademarks are the property of Koninklijke Philips N.V.  
or their respective owners.

[www.philips.com](http://www.philips.com)