

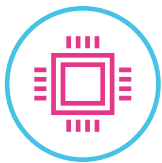
# ideacentre AIO 520 (22) & 520 (24)

## 24/7 EXCELLENCE

### SHOWCASE YOUR DESKTOP

Bring a premium look to your home with the Lenovo™ IdeaCentre™ AIO 520: a slim desktop with a 22" or 24" display. Its sleek design is appropriate for any room, and you'll marvel at its exceptional performance. It's yours to tackle every task – from creating a budget spreadsheet to streaming your favorite movies.

### WHY YOU SHOULD BUY THE LENOVO™ IDEACENTRE™ AIO 520 (22) & 520 (24)



#### The Latest 7<sup>th</sup> Generation Intel® Core™ i7 Processor and Intel® Optane™ Memory

Experience the advanced performance of a 7<sup>th</sup> Generation Intel® Core™ processor. We've paired that with revolutionary Intel® Optane™ memory<sup>1</sup> – an adaptable system accelerator made specifically for your new 7<sup>th</sup> Generation Intel® Core™ system.



#### Crystal-Clear Resolution

Full-HD (1920 x 1080) borderless display lets you watch home videos in startling clarity. And with a 10-point multitouch display, it's even easier to scroll through footage, pause, and zoom-in on the best clips.



Lenovo™



#### Windows Mixed Reality

Virtual Reality? Try Mixed Reality. Get ready for amazing experiences that draw elements of your surroundings into a virtual world. Windows Mixed Reality brings you immersive games and stunning 360° content. Simply plug-in your Lenovo Zone<sup>2</sup> headset and step into a new world.



#### Long-range Windows Cortana

Your own voice-activated digital assistant, ready to perform spoken tasks. With our far-field microphones, Cortana can hear you from up to four meters away.



<sup>1</sup> Optional configuration.  
<sup>2</sup> Lenovo Zone will be available starting October 2017.



WWW.LENOVO.COM



# ideacentre AIO 520 (22) & 520 (24)

## SPECIFICATIONS

Lenovo IdeaCentre AIO 520-24IKL\*, Lenovo IdeaCentre AIO 520-24IKU\*,  
Lenovo IdeaCentre AIO 520-22IKL\*, Lenovo IdeaCentre AIO 520-22IKU\*

## PERFORMANCE

### Processor

#### 520-24IKL

7<sup>th</sup> Generation Intel® Core™ i7-7700T Processor  
(2.9 GHz, Quad-Core, 35W)

7<sup>th</sup> Generation Intel® Core™ i5-7400T Processor  
(2.4 GHz, Quad-Core, 35W)

7<sup>th</sup> Generation Intel® Core™ i3-7100T Processor  
(3.4 GHz, Dual-Core, 35W)

7<sup>th</sup> Generation Intel® Pentium® G4560T Processor  
(2.9 GHz, Dual-Core, 35W)

7<sup>th</sup> Generation Intel® Celeron® G3930T Processor  
(2.7 GHz, Dual-Core, 35W)

#### 520-24IKU

7<sup>th</sup> Generation Intel® Core™ i5-7200U Processor  
(2.5 GHz, Dual-Core, 15W)

6<sup>th</sup> Generation Intel® Core™ i3-6006U Processor  
(2.3 GHz, Dual-Core, 15W)

7<sup>th</sup> Generation Intel® Pentium® 4415U Processor  
(2.3 GHz, Dual-Core, 15W)

#### 520-22IKL

7<sup>th</sup> Generation Intel® Core™ i5-7400T Processor  
(2.4 GHz, Quad-Core, 35W)

7<sup>th</sup> Generation Intel® Core™ i3-7100T Processor  
(3.4 GHz, Dual-Core, 35W)

7<sup>th</sup> Generation Intel® Pentium® G4560T Processor  
(2.9 GHz, Dual-Core, 35W)

7<sup>th</sup> Generation Intel® Celeron® G3930T Processor  
(2.7 GHz, Dual-Core, 35W)

#### 520-22IKU

7<sup>th</sup> Generation Intel® Core™ i5-7200U Processor  
(2.5 GHz, Dual-Core, 15W)

6<sup>th</sup> Generation Intel® Core™ i3-6006U Processor  
(2.3 GHz, Dual-Core, 15W)

7<sup>th</sup> Generation Intel® Pentium® 4415U Processor  
(2.3 GHz, Dual-Core, 15W)

### Operating System

Windows 10 Home

### Graphics

AMD Radeon™ 530; 2 GB

### Memory

520-24IKL, 520-24IKU

Up to 16 GB

520-22IKL, 520-22IKU

Up to 8 GB

### Storage

Up to 256 GB PCIe SSD /  
16 GB Intel® Optane™ Memory and  
2 TB HDD Storage\*

## DESIGN

### Display

520-24IKL, 520-24IKU

23.8" FHD (1920 x 1080) 16:9, 250-nits  
WVA LED Backlight LCD, Anti-Glare  
Borderless 10-point Multitouch Display

520-22IKL, 520-22IKU

21.5" FHD (1920 x 1080) 16:9, 250-nits  
WVA LED Backlight LCD, Anti-Glare  
Borderless 10-point Multitouch Display

### Dimensions (W x L x H)

520-24IKL, 520-24IKU

(mm) : 541.2 x 416.38 x 57.3

(inches) : 21.31" x 16.39" x 2.25"

520-22IKL, 520-22IKU

(mm) : 490.7 x 387.78 x 57

(inches) : 19.32" x 15.27" x 2.24"

### Weight

520-24IKL, 520-24IKU

Starting at 13.6 lbs (6.17 kg)

520-22IKL, 520-22IKU

Starting at 12.46 lbs (5.65 kg)

### Colors

Black

Warm Silver

## CONNECTIVITY

### WLAN & Bluetooth\*

1 x 1 WiFi 802.11 ac /  
Bluetooth® 4.0 Combo with WiFi Card

### Rear Ports

3 x USB 2.0

1 x USB 3.0

10/100/1000 LAN

Power DC Jack

HDMI™-In

HDMI™-Out

### Side Ports

1 x USB 3.0

### Bottom Ports

3-in-1 Card Reader (SD, SDHC, SDXC)

Microphone/Earphone Combo

## PRELOADED SOFTWARE

- Lenovo Companion 3.0
- Lenovo Settings
- Lenovo App Explorer
- Lenovo Family Cloud
- User Guide
- Lenovo ID
- OOBE Update
- McAfee® LiveSafe™
- Lenovo Rescue System 9.0
- Microsoft Office 2016

\* Optional.



## LENOVO SERVICES

### Warranty Extensions<sup>1</sup>

This fixed-term, fixed-cost service helps accurately budget for PC expenses and protect your investment.

### Warranty Upgrade to Onsite Service Repair<sup>2</sup>

Maximizes PC uptime and productivity by providing convenient, fast repair service at your place.

<sup>1</sup> Up to 3 years total duration

<sup>2</sup> May not be available in all countries

<sup>3</sup> Available in Austria, Germany, Ireland, Switzerland and UK

### Accidental Damage Protection<sup>1,2</sup>

Coverage for non-warranted damage incurred under normal operating conditions, such as spills, drops or damage to the integrated screen.

### Lenovo Services Premium Support<sup>1,3</sup>

One-stop solution for non-warranty challenges with network, security and software setup, performance tune-up and more.<sup>3</sup>

\* Example of Lenovo IdeaCentre AIO catalog naming convention



### Intel® platform codes

Haswell H81: IHH, BroadWell U: IBU, Skylake Z170: ISZ, Skylake B150: ISB, Skylake H110/H170: ISH, Skylake U: ISU, Apollo Lake: IAP, Kabylake H110: IKH

## OPTIONS & ACCESSORIES



Lenovo Zone VR Headset\*



Lenovo UHD F309 USB 3.0 2 TB



Lenovo 510 Wireless Combo Keyboard & Mouse

\* Lenovo Zone will be available starting October 2017.



WWW.LENOVO.COM

Lenovo reserves the right to alter product offerings and specifications at any time, without notice. Lenovo makes every effort to ensure accuracy of all information but is not liable or responsible for any editorial, photographic or typographic errors. All images are for illustration purposes only. For full Lenovo product, service and warranty specifications visit [www.lenovo.com](http://www.lenovo.com). Lenovo makes no representations or warranties regarding third party products or services. **Trademarks:** The following are trademarks or registered trademarks of Lenovo: Lenovo, the Lenovo logo, ideapad, IdeaCentre, yoga and yoga home. Microsoft, Windows and Vista are registered trademarks of Microsoft Corporation. Ultrabook, Celeron, Celeron Inside, Core Inside, Intel, Intel Logo, Intel Atom, Intel Atom Inside, Intel Core, Intel Inside, Intel Inside Logo, Intel vPro, Itanium, Itanium Inside, Pentium, Pentium Inside, vPro Inside, Xeon, Xeon Phi, and Xeon Inside are trademarks of Intel Corporation in the U.S. and/or other countries. Other company, product and service names may be trademarks or service marks of others. Visit [www.lenovo.com/lenovo/us/en/safecomp/](http://www.lenovo.com/lenovo/us/en/safecomp/) periodically for the latest information on safe and effective computing. ©2017 Lenovo. All rights reserved.



Lenovo™