



PHILIPS
Hue White
Dual pack GU10
2 x GU10
Warm white light
Dimmable
Smart control with Hue
Bridge*



8718699605537



Automate your lights

Expand your smart lighting system and get a comfortable, warm white glow with these 2 fully dimmable Philips Hue White GU10 lamps. Connect to the Hue Bridge to unlock the full smart lighting control and features.

Limitless possibilities

- Away-from-home smart light control
- Come home to a house filled with light
- Make it look like you're home with smart lights
- Connect to your Hue Bridge for full smart lighting control
- Control lights with your voice
- Installation-free dimming

PHILIPS

Highlights

Control lights away from home



The Philips Hue app gives you complete control over your lights, even if you're not at home. Switch your lights off and on remotely using just the app to ensure your home is always lit the way you want it.

Connect to the Hue Bridge



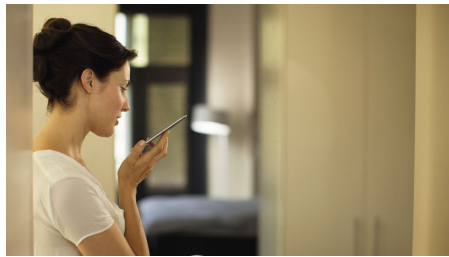
This product requires a connection to the Hue Bridge to unlock the full smart control and features. Control your lights using the Philips Hue app, set timers, routines, add or remove lights and more. *Hue Bridge sold separately

Come home with light



Set your Philips Hue app to recognise when you're almost home. Before you even step out of your car or walk up the path, your selected smart lights turn on automatically.

Control with your voice



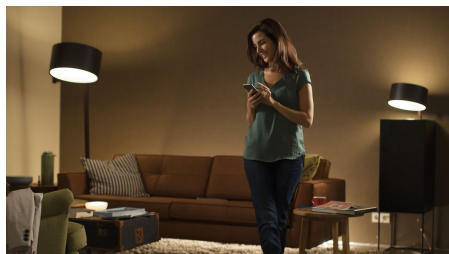
When connected to the Hue Bridge, you can pair your lights with Alexa, Apple HomeKit, and the Google Assistant and control your lights using just your voice. Simple voice commands let you turn your lights on and off, dim or brighten your lights, and even set a light scene.

Make it look like you're home



Use the Philips Hue app to schedule light routines whenever you're away. Your smart lights will turn on at the times you've selected, and sometimes a few minutes before or after, to truly mimic your presence in the house.

Installation-free dimming



Experience guaranteed smooth dimming with Philips Hue. Not too bright. Not too dark. Just right. No need for wires, an electrician or installation

Specifications

Environmental

- Operational humidity: 5% <H<95% (non-condensing)
- Operational temperature: -20 °C to 45 °C

Guarantee

- 2 years: Yes

Power consumption

- Energy Efficiency Label: A

What's in the box

- Hue white bulbs: 2

Packaging dimensions and weight

- EAN/UPC – Case: 8718699605544
- SAP Gross Weight EAN (Piece): 0.000 kg
- Net Weight: 0.050 kg
- SAP Length (Piece): 0.000
- SAP Width (Piece): 0.000
- SAP EAN/UPC – Set: 8718699605537

The bulb

- Colour temperature: 2700K
- Energy efficiency label: A
- Fitting: GU10
- Form factor: GU10
- Height: 57 mm
- Input voltage: 220V-240V
- Lifetime: 15,000 h
- Light output: Dimmable via smart device only, High-quality white light, Beam angle 46°
- Lumen output: 300 lm
- Max. operation power: 5.5 W
- Max. standby power: 0.1 W
- Number of switching cycles: 50,000
- Power factor: >0.5
- Rated lifetime: 15,000 h
- Software upgradable: when connected to Hue bridge
- Start up: Instant 100% light output
- Wattage: 5.5 W
- Width: 50 mm



Issue date: 2019-12-11
Version: 0.518

© 2019 Signify Holding. All rights reserved. Signify does not give any representation or warranty as to the accuracy or completeness of the information included herein and shall not be liable for any action in reliance thereon. The information presented in this document is not intended as any commercial offer and does not form part of any quotation or contract, unless otherwise agreed by Signify. Philips and the Philips Shield Emblem are registered trademarks of Koninklijke Philips N.V.

www.lighting.philips.com