

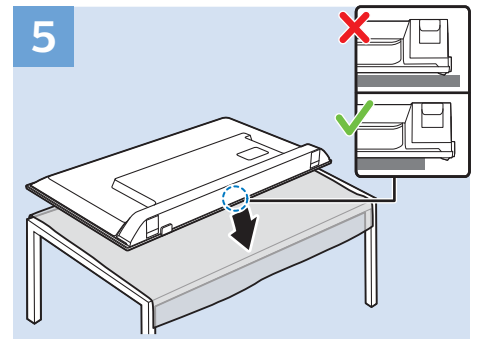
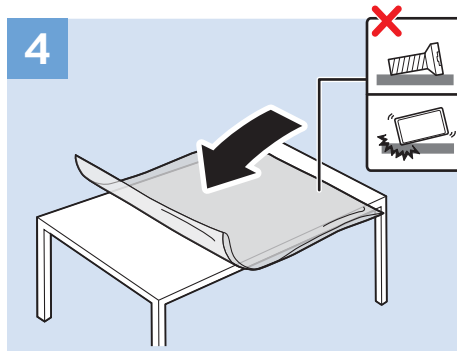
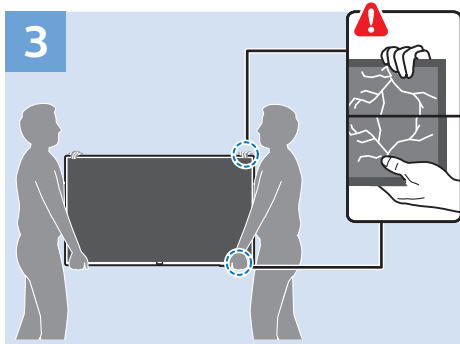
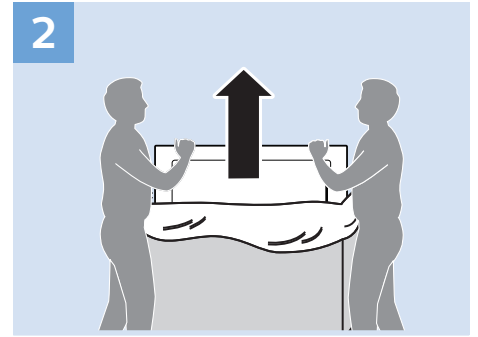
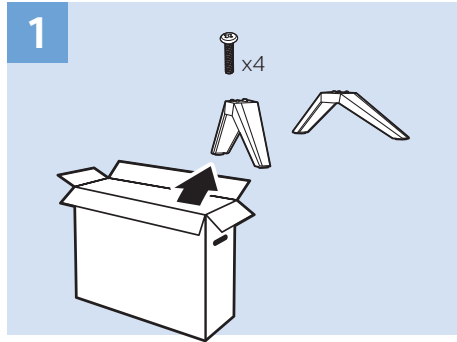
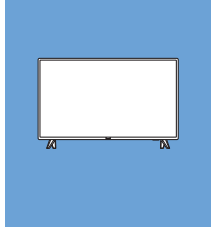
Register your product and get support at  
[www.philips.com/TVsupport](http://www.philips.com/TVsupport)

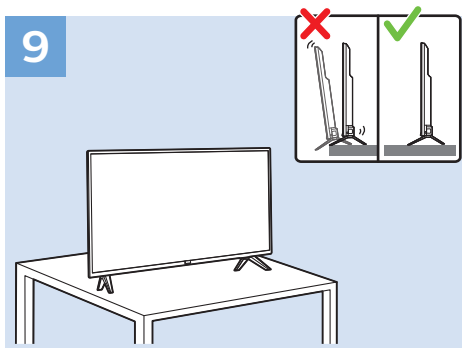
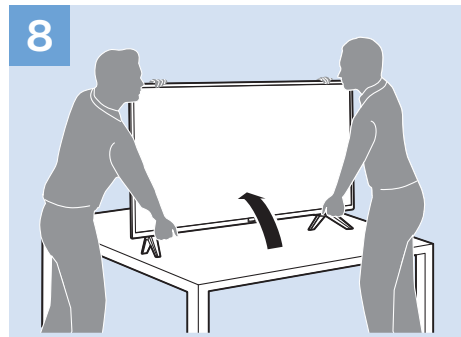
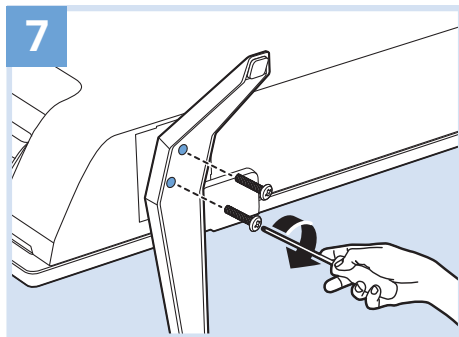
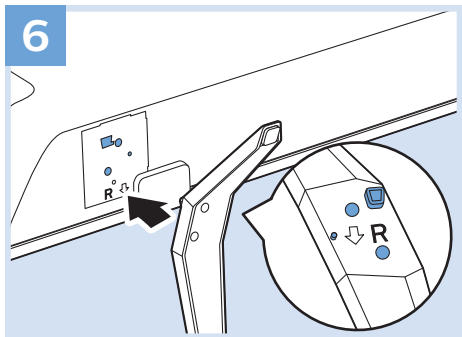
4233 series

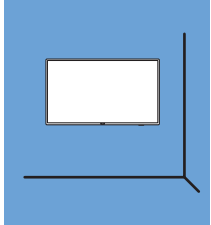
**PHILIPS**



English - Read the safety instructions.

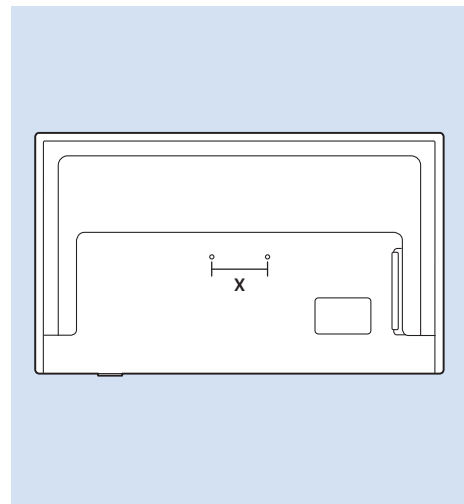


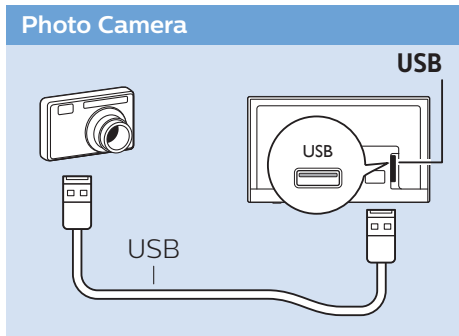
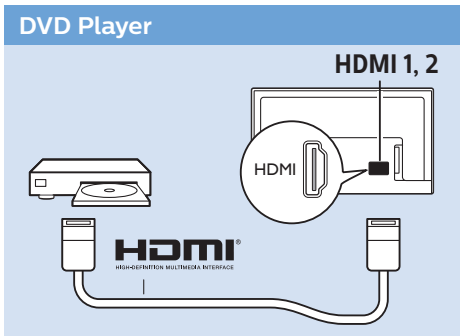
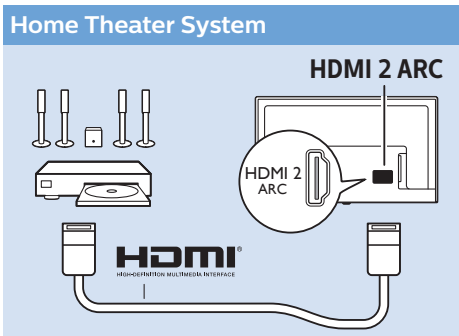
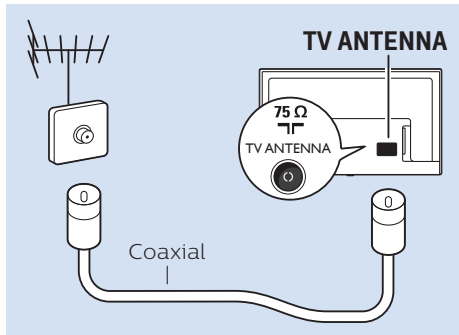
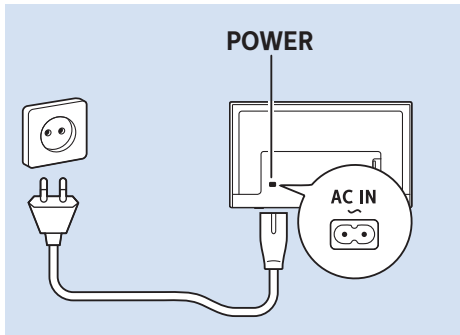
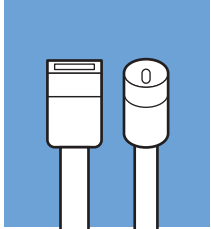




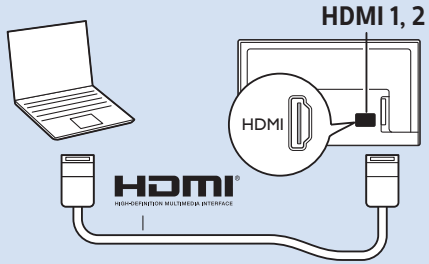
32"

VESA (x) 100 mm M6

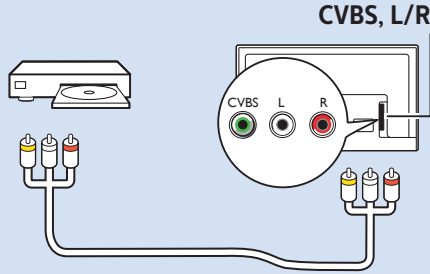




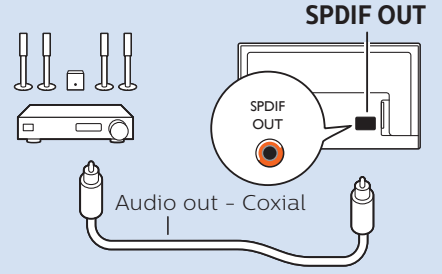
### Computer - HDMI



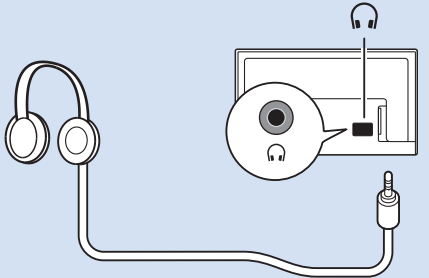
### Video Player - CVBS, L/R



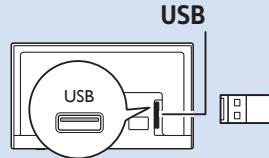
### Digital Audio System - OPTICAL

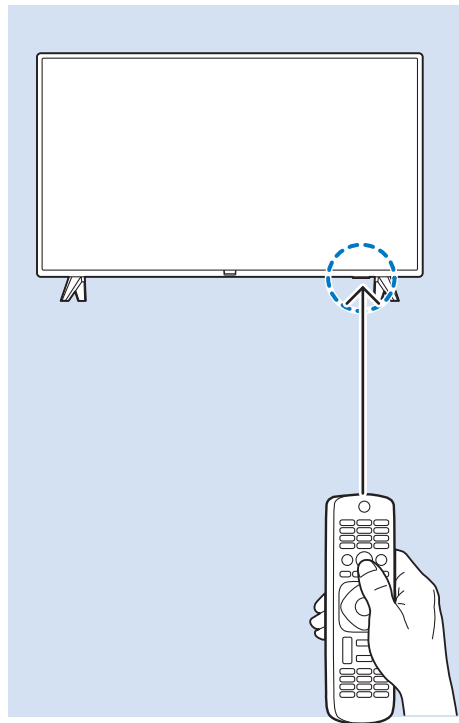
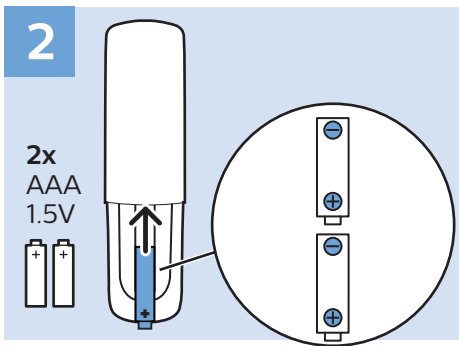
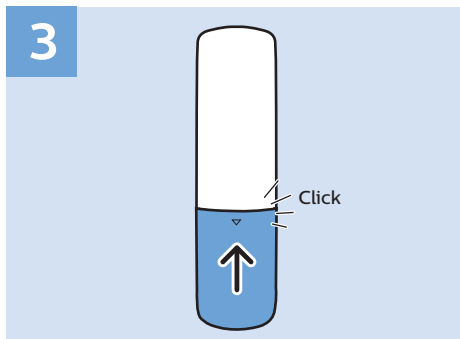
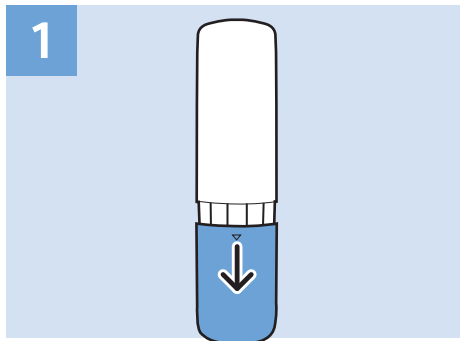
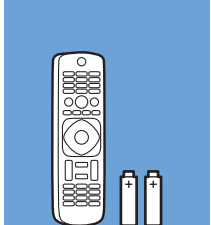


### Headphones

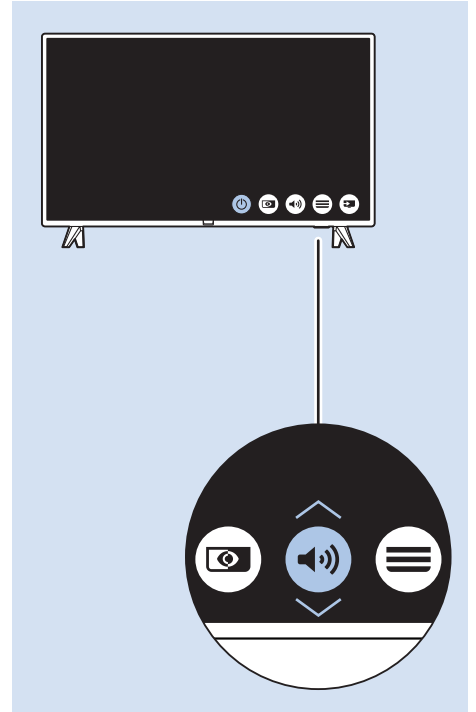
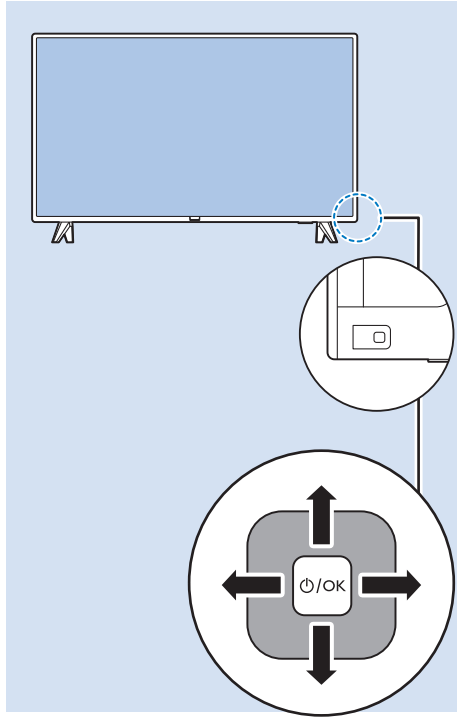
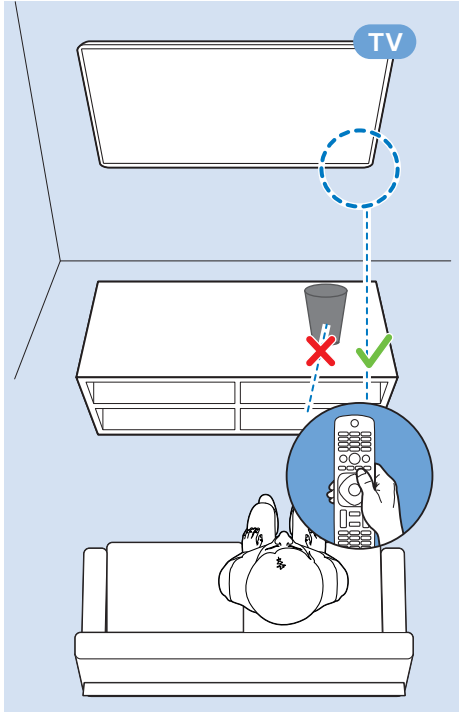


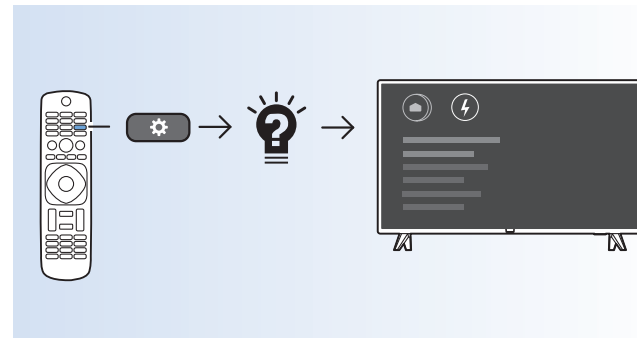
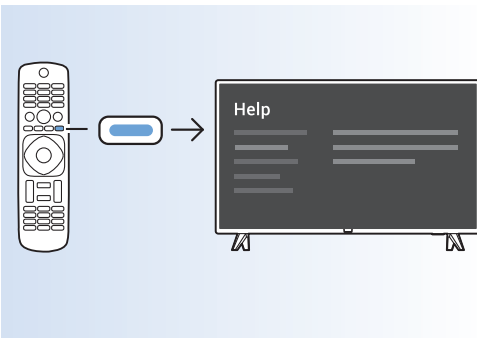
### USB Flash Drive











[www.philips.com/TVsupport](http://www.philips.com/TVsupport)







All registered and unregistered trademarks are property of their respective owners.  
Specifications are subject to change without notice.  
Philips and the Philips' shield emblem are trademarks of Koninklijke Philips N.V.  
and are used under license from Koninklijke Philips N.V.  
2018 © TP Vision Europe B.V. All rights reserved.

[philips.com](https://www.philips.com)